

How to Navigate Insurance and CCB's

Year Long Project of Nita Chettiar
LEND Family Fellow 2020-2021



1

Background on CPM Modules

- + CPM – Colorado Parent Mentoring Program
- + Initiated by Eric Moody, Kristen Kaiser and Dina Johnson (JFK Partners Team) in 2010
- + 4 Modules on Navigating
 - o Systems
 - o Schools/IEP
 - o CCB's
 - o Insurance
- + CCB and Insurance modules incomplete
- + Program not integrated to new website
- + Why did I choose it?



2

Goal/Method

INSURANCE

- + Draft version from pre-Affordable care ACT
- + Update it to current benefits and policies
- + Worked with community experts
 - o Family Voices CO
 - o CO HCPF
- + Reviewed by 5 parents/families from diverse backgrounds

CCB

- + Draft version from 2010
- + Updated to current programs and policies
- + Working with community experts
 - o Developmental Pathways
 - o IMAGINE! Colorado
 - o Alliance Colorado
- + Pending review by parents/families

3

Measurable Outcomes/Progress to date

INSURANCE

- + Updated to the most current policy/benefits
- + Created feedback form for
 - o Parent/Families (5 from various cultural/economical backgrounds)
 - o Community Experts (3 different organizations)
- + Made revisions based on feedback from end users and experts

CCB

- + Updated to the most current policies
- + Some gaps still need bridging
 - o E.g. transition from EI to different funds
 - o Adult services/supports
- + Most complex as all CCB operate a bit differently
- + Not many opportunities to collaborate due to busy schedules of CCB experts
- + Pending review by parents/families

4

Interdisciplinary Practice

- + Not specific to any particular discipline
- + Information not limited to families of children with ASD diagnosis but can apply to other IDD diagnosis
- + Will be accessible to all families and providers free of cost
- + Room for expansion in CPM
 - o Module on Transition to Adulthood
 - o Adult waivers SSI/SSDI/DD

5

Next Steps

Short Term:

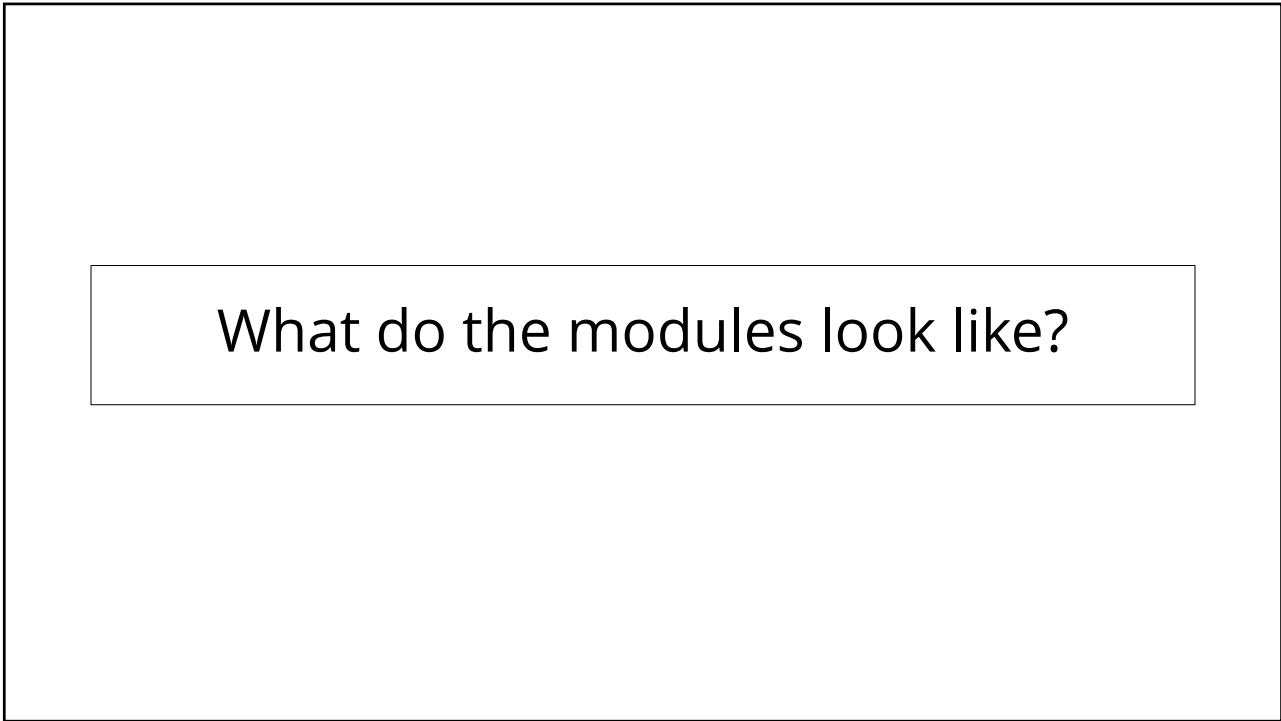
Prior to Insurance and CCB modules going live on JFK website:

- + Updates needed on
 - o CPM Manual
 - o Navigating Systems
 - o Navigating School/IEP
- + CCB module needs to be finalized
- + Voice narrations to be recorded for CCB and Insurance Modules

Long Term:

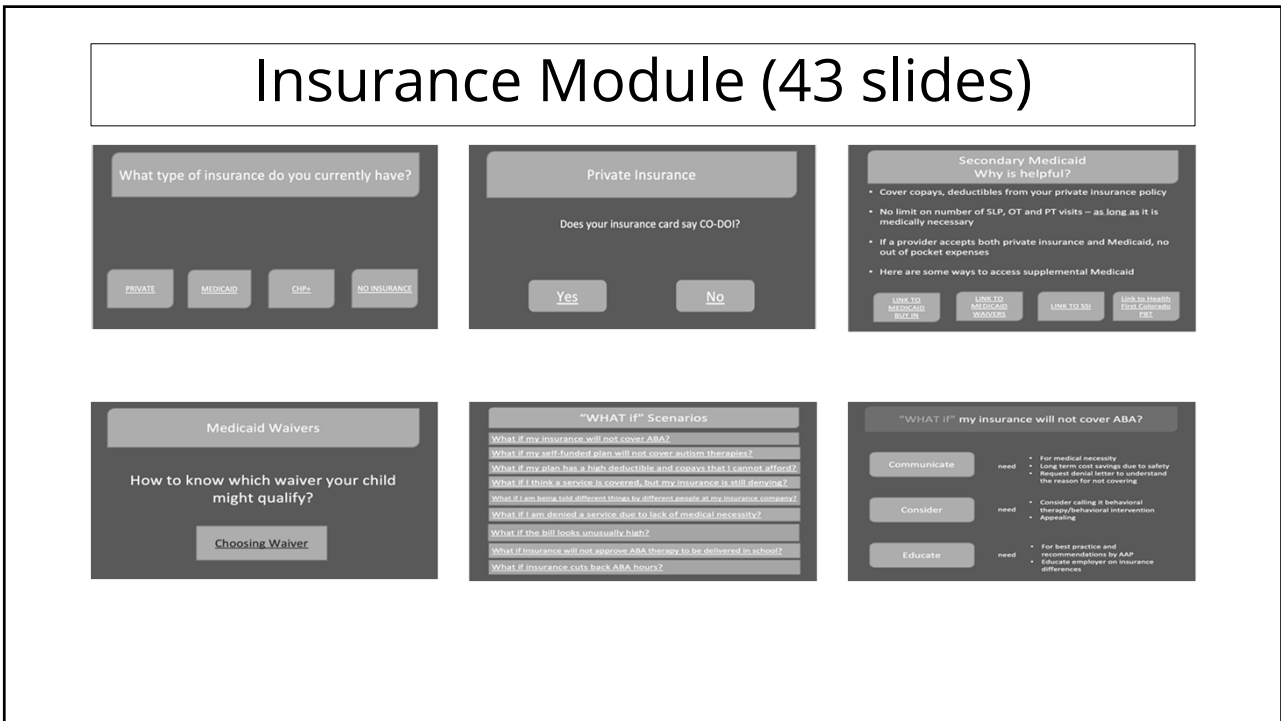
All modules will need periodic review to update to most current policy changes

6



What do the modules look like?

7



8

CCB Module (26 slides)

What are CCB's and How Can they Help Me?

How to Find Your CCB

Eligibility for CCB Services

0-3 years	25% delay in at least one area of development (speech, cognitive, motor, etc.)
3-5 years	documentation of developmental delays
5 years and older	documentation of developmental disability

documentation of developmental delays when your child is 12

- IQ score of 70 or below **OR**
- Adaptive behavior score of 70 or below
- Get on adult waitlists if his/her adaptive score is low

Early Intervention (EI) Services

Age	Birth to 3 years
Priority	<ul style="list-style-type: none"> Delays in development of at least 25% in one area of development (cognitive, language, motor, etc.) An established medical condition such as Down Syndrome or Autism
Documentation	<ul style="list-style-type: none"> Assessment completed by EI staff Outside assessment completed by medical staff
Waitlist	Waitlists for EI are not allowed. By law, Individualized Family Service Plans (IFSPs) must be created within 45 days of the referral date.
Process	Parents can self-refer their child if they are concerned about development. Primary care physicians can also refer.
Appeals Process	If you are denied EI services, you can appeal by ... NEED

"WHAT IF" Scenarios

- What if my child hasn't been evaluated for a developmental disability?
- What if my child doesn't qualify for Early Intervention services?
- What if you are told that EI does not provide ABA?
- What if my child does not qualify for any waivers?
- What if my child's diagnosis is mild; will CCB have anything to offer?
- What if I am already on SSI or Medicaid, why would I need waivers?
- What if I have a conflict with my CCB Case Manager?
- How do I know if my child will be eligible for adult CCB services?

"WHAT IF" my child doesn't qualify for Early Intervention?

Communicate	Ask for clarification about the process for deeming child ineligible. Ask for alternative options or resources.
Consider	Maybe your child doesn't need early intervention. There are other ways you can support your child.
Educate	If you want to appeal the decision, first talk with your service coordinator to see what the process is at your CCB.

9

What's Next for Me?

Advocacy

The act of pleading or arguing in favor of something, such as a cause, policy, or interests; active support of an idea or

10