



# TRAVEL BULLETIN

The official COLORADO Tropical Medicine Newsletter

Prepared by:  
**Andres Henao, MD**

FIRSTLY

---

# THANK YOU

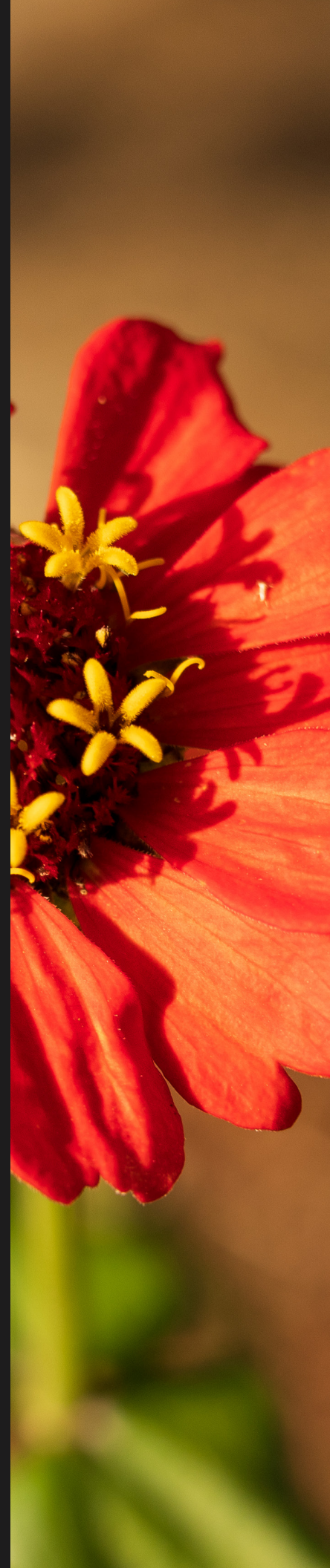
---

FOR YOUR DEDICATION  
AND PATIENT CARE!

*<<We have continued our dedication to travel medicine providing state of the art travel medicine counselling and prevention efforts. We also have grown our impact in Global health with education and research activities. >>*

**Andres Henao**

Associate Professor of Medicine  
University of Colorado Anschutz Medical Campus



# CONTENT

<b>WHO DIEASE OUTBREAKS NEWS</b>	<b>5</b>
.....	
<b>NEWS AND UPDATES</b>	<b>6</b>
.....	
<b>RESEARCH ACTIVITIES</b>	<b>8</b>
.....	
<b>GLOBAL HEALTH</b>	<b>10</b>
.....	
<b>THERAPEUTICS ADVANCES IN INFECTIOUS DISEASES</b>	<b>12</b>
.....	



WE BUILD

---

EXPERIENCE

# 1 | WHO OUTBREAKS 2023.. SO FAR

Latest WHO Disease Outbreak News (DONs), providing information on confirmed acute public health events or potential events of concern.



World Health  
Organization



## Marburg Tanzania

Between 21 March and 31 May, a total of nine cases (eight laboratory-confirmed and one probable) were reported.



## Acute Hepatitis E South Sudan

A total of 91 HEV suspected cases have been reported from Wau, of which 35 are confirmed; there have been five deaths reported (case fatality ratio [CFR] 5.5%).



## Influenza A BRAZIL

Brazil notified WHO of a fatal laboratory-confirmed human case of infection with a swine-origin influenza A(H1N1) variant (v) virus in the inner state of Paraná.



## Enterovirus France

As of 26 June 2023, France has reported nine cases of severe E-11 neonatal sepsis associated with hepatic impairment and multi-organ failure.

NEWS

2

# AND UPDATES

## HEALTH ALERT NETWORK

Important recent health advisory notifications



### **GUIDANCE ON MEASLES DURING THE SUMMER**

**ENSURE THAT ALL PATIENTS WITHOUT OTHER EVIDENCE OF IMMUNITY, ESPECIALLY THOSE PLANNING INTERNATIONAL TRAVEL, ARE UP TO DATE ON [MMR](#) VACCINE AND OTHER RECOMMENDED VACCINES BEFORE THEIR INTERNATIONAL TRAVEL.**

As of June 8, 2023, CDC has been notified of 16 confirmed U.S. cases of measles across 11 jurisdictions, with 14 (88%) linked to international travel

### **PLAGUE ACTIVITY IN MONTEZUMA COUNTY - JUNE 27, 2023**

**CDPHE AND MONTEZUMA COUNTY PUBLIC HEALTH ARE INVESTIGATING A CASE OF PLAGUE (YERSINIA PESTIS) IN A RESIDENT OF MONTEZUMA COUNTY. THE EXPOSURE LIKELY OCCURRED ON PRIVATE PROPERTY.**

An average of one human case of plague per year is reported to CDPHE since 1959, 72 cases of plague have been reported in Colorado.



### **LOCALLY ACQUIRED MALARIA IN THE US**

**LOCALLY ACQUIRED MALARIA CASES (P. VIVAX) REPORTED IN TWO U.S. STATES (FLORIDA AND TEXAS) WITHIN THE LAST 2 MONTHS.**

Consider the diagnosis of malaria in any person with a fever of unknown origin, regardless of international travel history, particularly if they have been to the areas with recent locally acquired malaria.

## Tuberculosis on the rise for first time in decades after COVID-19 interrupted public health interventions and increased inequality



### **Tuberculosis is a social disease**

Tuberculosis is a preventable disease, thanks to effective vaccines, testing and treatments. But millions of people around the world still suffer from this disease, not because of a lack of medical knowledge, but because of persistent social inequities.

Unequal access to economic opportunities, limited health care, poor sanitation, crowded living conditions, malnutrition and illnesses such as diabetes or HIV are all associated with increased risk of tuberculosis.

In the U.S. in 2021, racial and ethnic minority groups accounted for more than 85% of tuberculosis cases, with 71% of cases occurring in persons born outside

the U.S. There are many neglected diseases of poverty, and tuberculosis is a great example of how social forces produce human disease. With an estimated one-third of the world's population at risk for tuberculosis today, fostering social justice interventions to reduce health inequities is a critically important step to relieving the global medical burden of this relentless disease.

PUBLIC HEALTH LEADERS  
MUST CONFRONT THE  
POWER IMBALANCES THAT  
HARM [global](#) HEALTH

***WE CANNOT CONTINUE TO VIEW GLOBAL HEALTH A "HUMANITARIAN RESCUE MISSION PERFORMED BY RICH COUNTRIES AND PEOPLE ON POOR COUNTRIES AND PEOPLE"***

**P**ERU REPORTS 241% INCREASE IN DENGUE RESULTING IN WORST OUTBREAK IN COUNTRY HISTORY

CASES OF AUTOCHTHONOUS **LEPROSY** DESCRIBED IN SIX MEN WHO WERE BORN IN THE U.S. HEALTH PROVIDERS NEED TO BE AWARE OF THIS CONDITION.

# 4 | RESEARCH ACTIVITIES 2022



PUBMED INDEXED  
PUBLICATIONS



MENTEES



IDWEEK ABSTRACTS

## WE ARE FULLY CHARGE

---



We have had a very productive year. We have continued our clinical research team efforts and collaborations

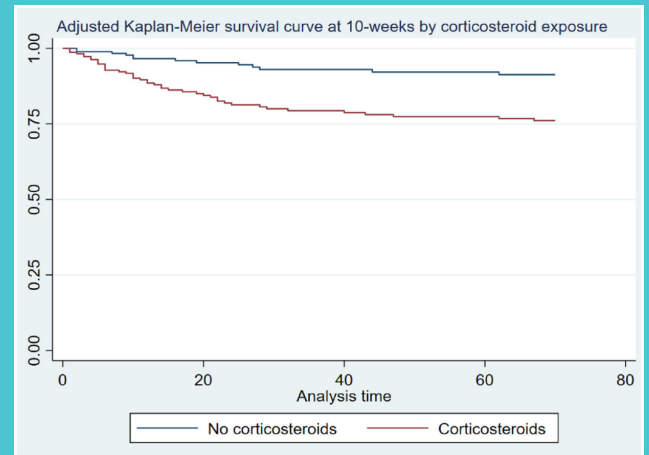
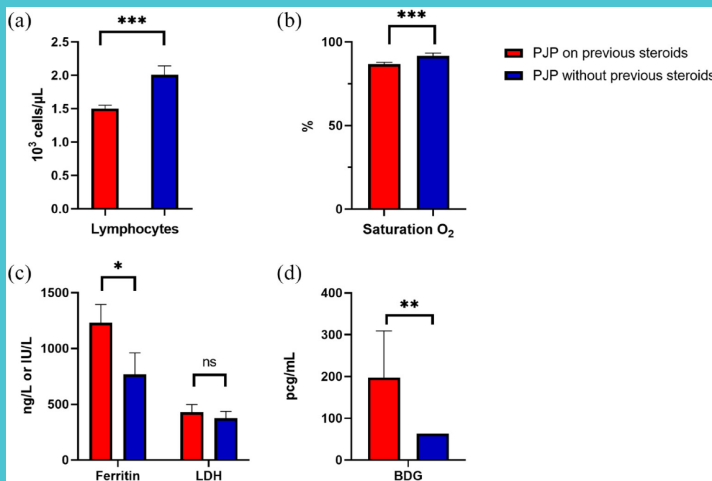




# OUR TEAM

In facts and numbers

## << PREVIOUS CORTICOSTEROID EXPOSURE ASSOCIATES WITH AN INCREASED PNEUMOCYSTIS JIROVECI PNEUMONIA MORTALITY AMONG HIV-NEGATIVE PATIENTS >>



**DANIEL B. CHASTAIN,  
PHARM.D, BCIDP, AAHIVP  
CLINICAL ASSOCIATE  
PROFESSOR  
UNIVERSITY OF GEORGIA,  
COLLEGE OF PHARMACY**



### MPOX IN PATIENTS WITH HIV

People living with HIV with Mpox infection had higher rates of clinical manifestations and required greater utilization of healthcare resources for any reason compared with those without HIV

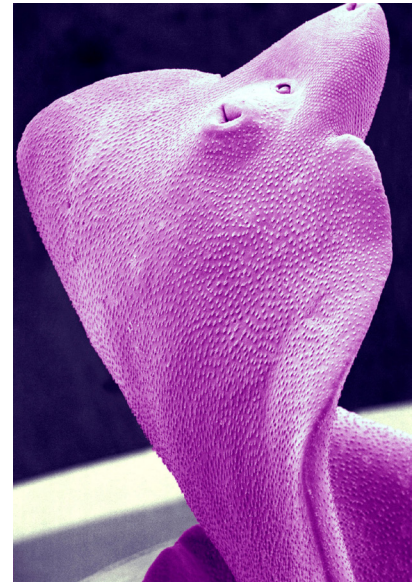
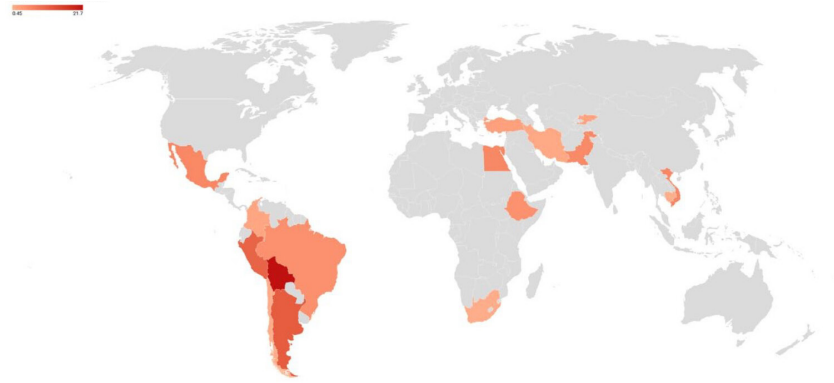
5 | GLOBAL  
HEALTH



---

All photographs were taken in Colombia (Canon EOS RP)

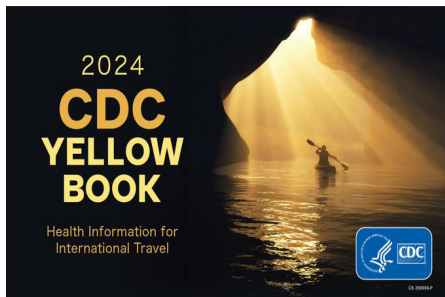
# GLOBAL PREVALENCE OF HUMAN FASCIOLIASIS



## MAIN FINDINGS

The meta-analysis performed by our team revealed a pooled global prevalence of 4.5%

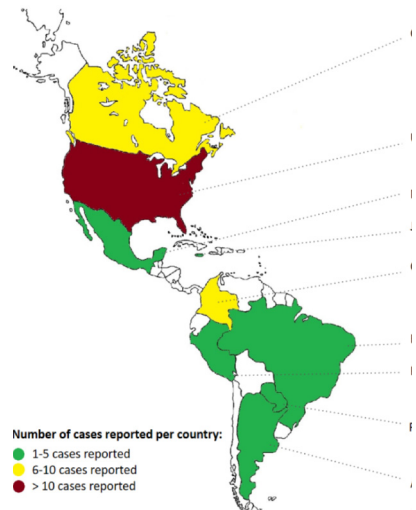
The prevalence in South America, Africa, and Asia was 9.0%, 4.8%, and 2.0%, respectively. The highest prevalence was found in Bolivia (21%), Peru (11%), and Egypt (6%).



## CDC TRAVEL HEALTH

### Yellow Book 2024

CDC [Yellow Book](#): Health Information for International Travel is a resource for health professionals providing care to international travelers. It compiles the US government’s most current travel health guidelines, including pretravel vaccine recommendations, destination-specific health advice, and easy-to-reference maps, tables, and charts.



## THE LANCET REGIONAL HEALTH

### Malaria

[Migrants](#) in transit across Central America and the potential spread of chloroquine resistant malaria—a call for action



## PATHOGENS

### Cryptogenic *Klebsiella pneumoniae*

The features of cryptogenic *K. pneumoniae* [liver abscess](#) in the Americas mirror those described in Asia, confirming its global dissemination. This condition is increasingly being reported in our continent and carries significant clinical impact due to its systemic **invasiveness.**

6 | TAID JOURNAL



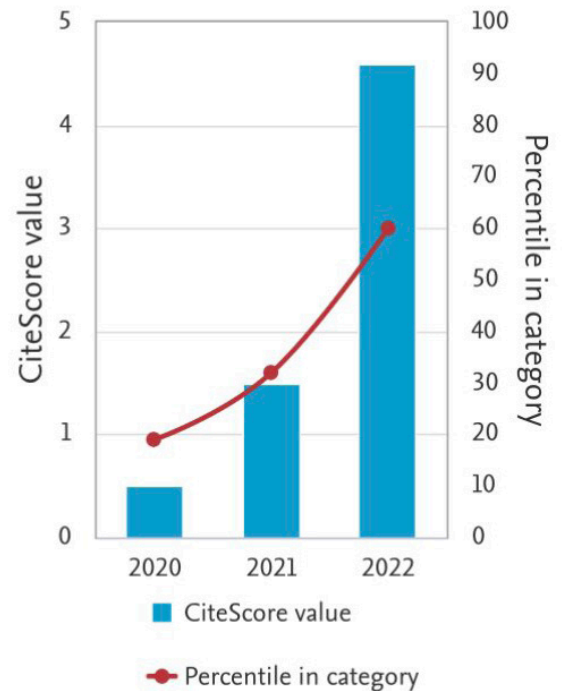
## 2023 NUMBERS AND OUR GROWTH

**I**mpact Factor: 5.7  
**Q**1 in Scopus (CiteScore: 4.6)  
**R**eadership: 188,794

**M**eet the [editors](#)

*WE HAVE RETAINED A STRONG  
FOCUS ON PUBLISHING GOOD  
QUALITY SCIENCE AND EDITORIAL  
DECISIONS ARE NOT BASED  
ON NOVELTY OR PERCEIVED  
IMPORTANCE.*

CiteScore trend



The [special collections](#) welcome contributions, which focus on but are not limited to the following areas:

- Neuroinfectious Diseases
- Update on invasive fungal infections
- Current Perspectives in HIV and Aging
- Pre-exposure prophylaxis to Sexual Health and Wellness

