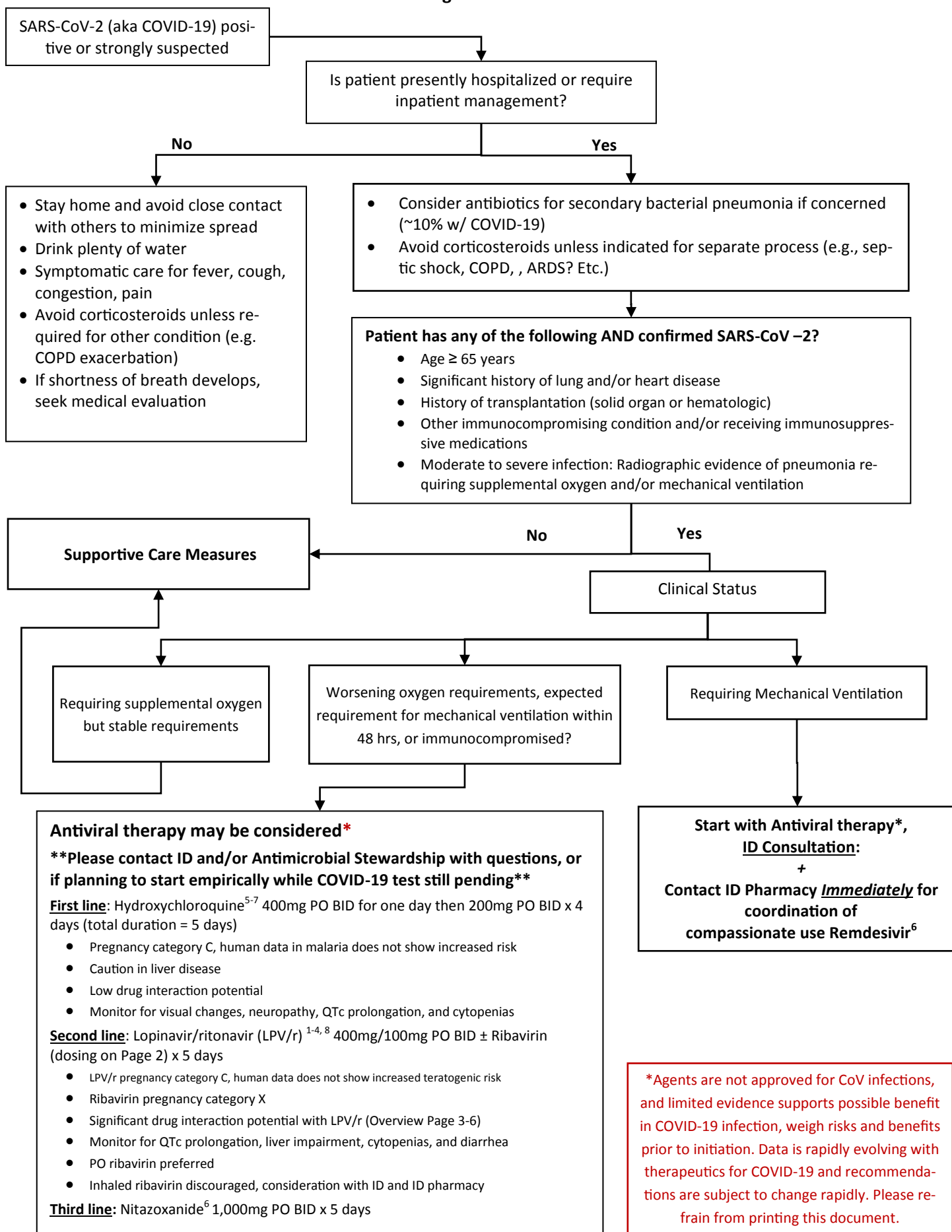


Treatment Algorithm for SARS-CoV-2



Ribavirin (PO) – Treatment of SARS-CoV-2 Pneumonia (round to closest 200mg interval)

- CrCl > 50: Load 10mg/kg (max 2g) PO once, then start 400mg (40-60kg), 600mg (61-90kg), 800mg (91-120kg), or 1000mg (> 120kg) PO TID.
- CrCl 30-50: Load 10mg/kg (max 2g) PO once, then start 200mg PO TID
- CrCl < 30/HD: Load 10mg/kg (max 2g) PO once, then 200mg PO qday (limited data)
For lung transplant, omit loading dose and start 15-20mg/kg/day in 3 divided doses

In Depth Drug Interactions Website: <http://www.covid19-druginteractions.org/>

References:

1. Chu CM, et al. Role of lopinavir/ritonavir in the treatment of SARS: initial virological and clinical findings. *Thorax*. 2004; 59: 252-6.
2. Chan KS, et al. Treatment of severe acute respiratory syndrome with lopinavir/ritonavir: a multicentre retrospective matched cohort study. *Hong Kong Med J*. 2003; 9: 399-406.
3. Park SY, et al. Post-exposure prophylaxis for Middle East respiratory syndrome in healthcare workers. *J Hosp Infect*. 2019; 101(1): 42-6.
4. Young BE, et al. Epidemiologic Features and Clinical Course of Patients Infected With SARS-CoV-2 in Singapore. *JAMA*. 2020; epub
5. Gao J, et al. Breakthrough: Chloroquine phosphate has shown apparent efficacy in treatment of COVID-19 associated pneumonia in clinical studies. *Biosci Trends*. 2020; epub.
6. Wang M, et al. Remdesivir and chloroquine effectively inhibit the recently emerged novel coronavirus (2019-nCoV) in vitro. *Cell Research*. 2020; 30: 269-71.
7. Gautret et al. (2020) Hydroxychloroquine and azithromycin as a treatment of COVID-19: results of an open-label non-randomized clinical trial. *International Journal of Antimicrobial Agents* – In Press 17 March 2020 – DOI : 10.1016/j.ijantimicag.2020.105949
8. Cao B, et al. A Trial of Lopinavir–Ritonavir in Adults Hospitalized with Severe Covid-19. *N Eng J Med*. 2020; epub—DOI: 10.1056/NEJMoa2001282