

Disaster Plan

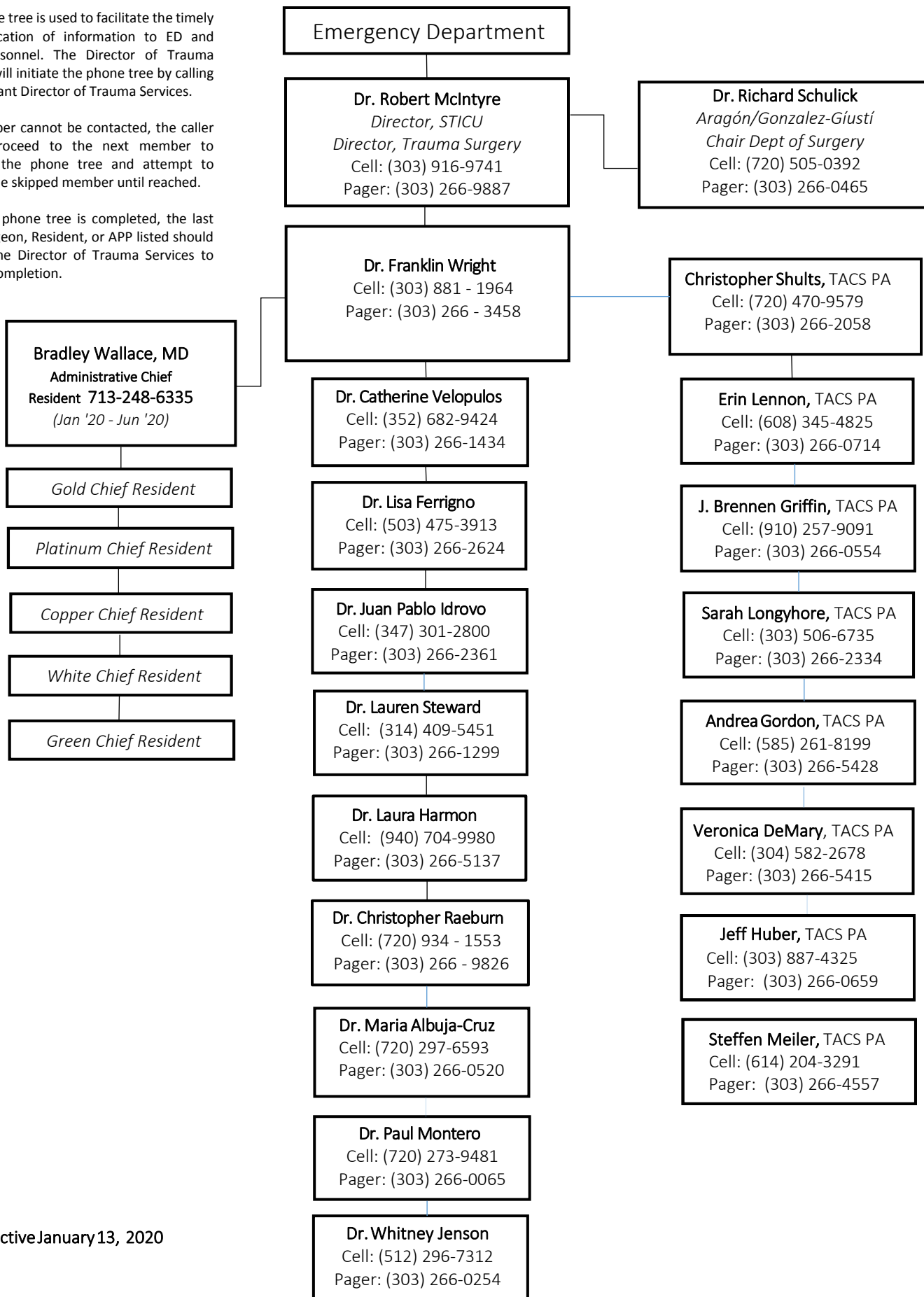
2019-2020 Phone Tree

Phone Tree Instructions

This phone tree is used to facilitate the timely communication of information to ED and TACS personnel. The Director of Trauma Services will initiate the phone tree by calling the Assistant Director of Trauma Services.

If a member cannot be contacted, the caller should proceed to the next member to continue the phone tree and attempt to contact the skipped member until reached.

Once the phone tree is completed, the last TACS Surgeon, Resident, or APP listed should contact the Director of Trauma Services to confirm completion.



Effective January 13, 2020