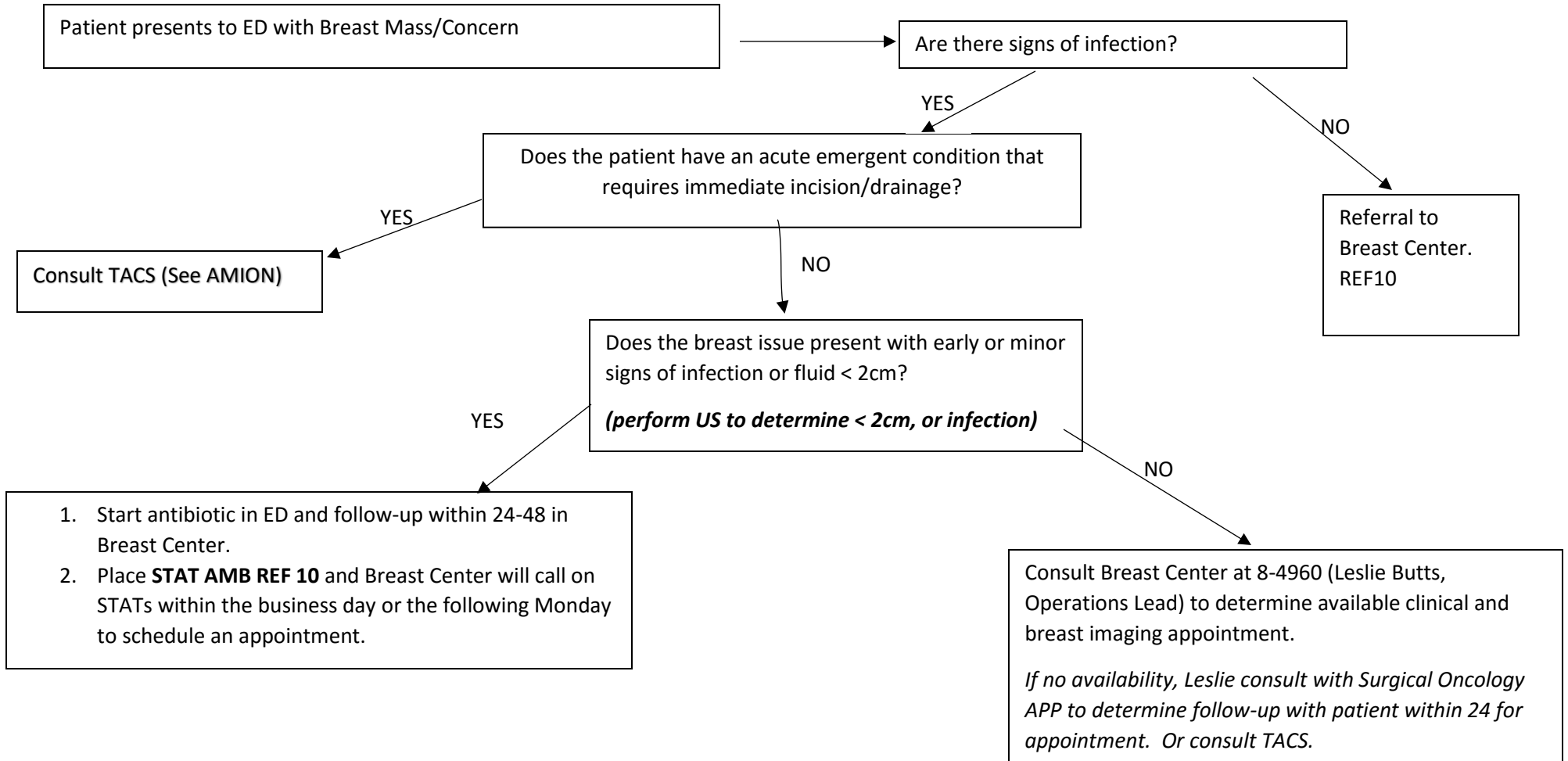


**Patients with Breast Complaints Pathway**



Breast Center Contacts:

Patient Line: 720-848-1030

Leslie Butts, Clinic Ops Lead: 8-4960

RN Triage Line: 8-7408

**NOTES**

- After hours, consult TACS and scheduled with Breast Center in 24-48 hours.
- If patient is uninsured, treat to determine appropriate care and consult ED SW to provide breast imaging follow-up services and care.