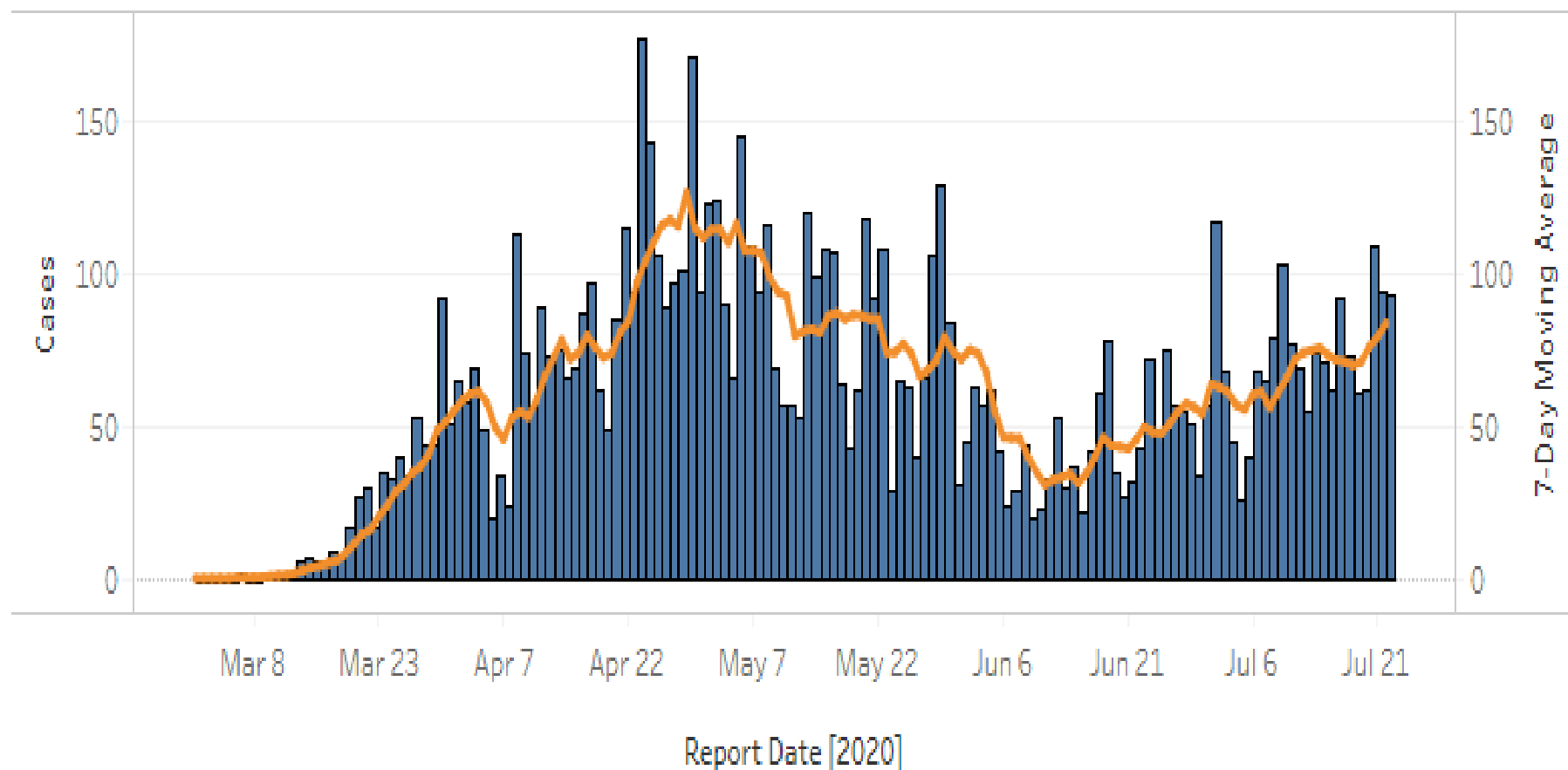


From the frontlines – a recent case of severe COVID disease

- 51 year old Latino, immigrant from Mexico
- In primary care at a community health center – no major chronic illnesses
- 4/28: urgent care center with sore throat and malaise. Diagnosis – strep throat (COVID test ordered but not done)
- 5/1: ED, with severe shortness of breath, severe hypoxia. Intubation complicated by arrest
- 5/24: died of respiratory failure

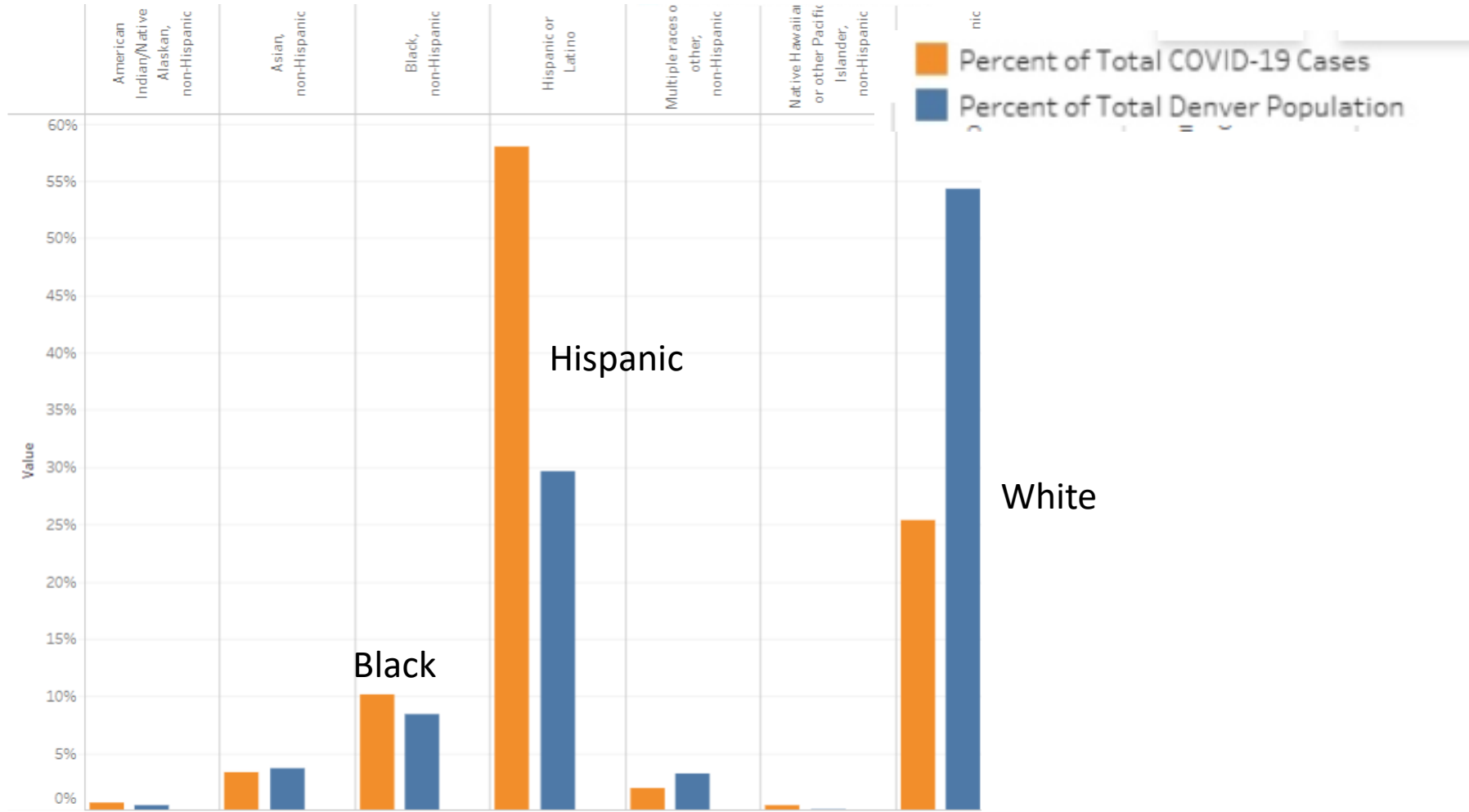
Denver County COVID-19 Cases by Day of Report



Congregate settings include long-term care facilities, jails, and cases in people experiencing homelessness.

Last Update: 7/22/2020 11:40:05 PM UTC

Disparities in COVID diagnoses in Denver County, by race/ethnicity



Percentages are based on population with completed interviews and known demographics.

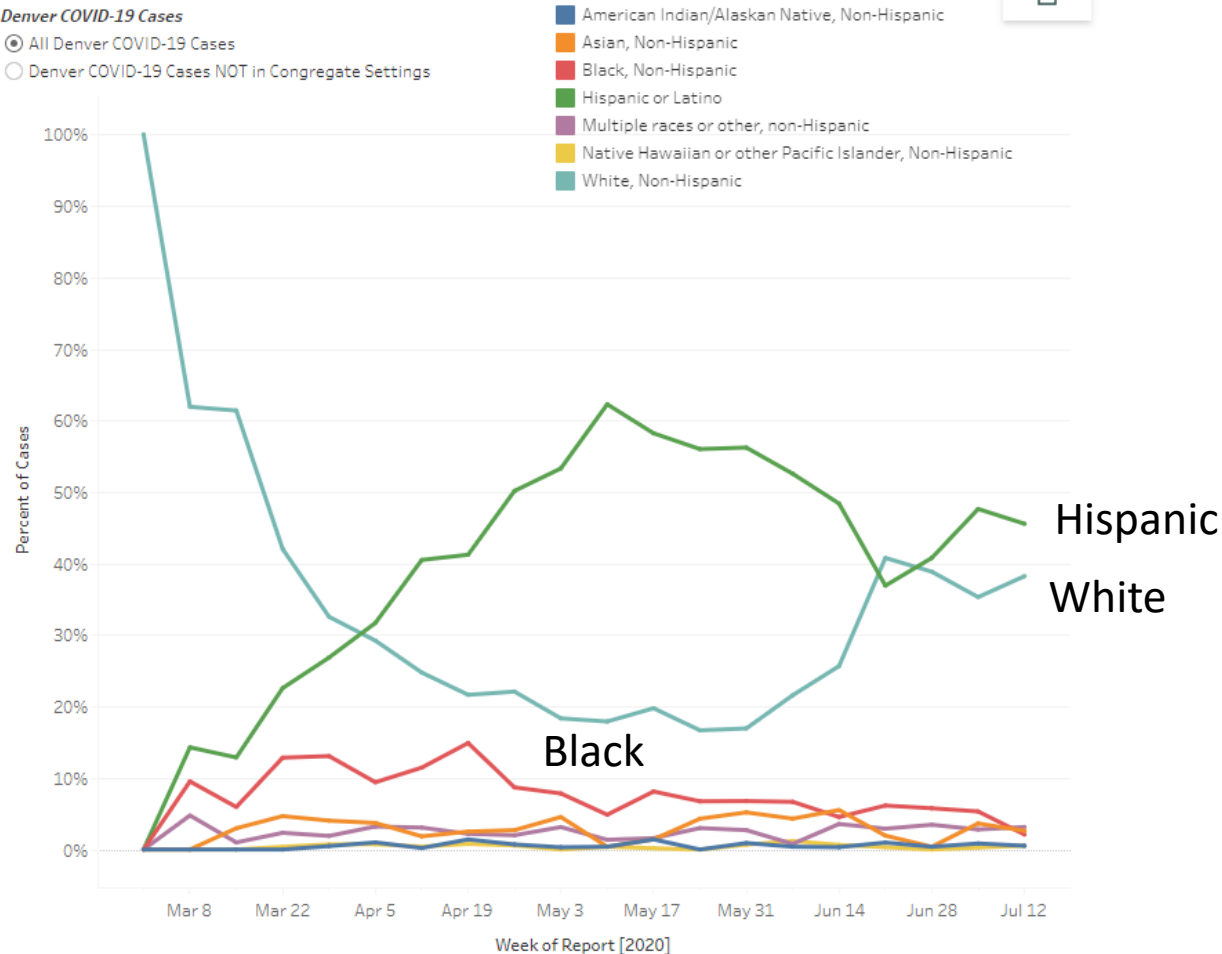
Changes in the COVID pandemic in Denver: race/ethnicity

COVID-19 Percent of Cases by Race and Ethnicity

Denver COVID-19 Cases

● All Denver COVID-19 Cases

○ Denver COVID-19 Cases NOT in Congregate Settings



COVID among school-aged children and youth, by ethnicity (Denver)

		Age (years)		
		5-11	12-15	16-18
Ethnicity	Hispanic/Latino	89%	63%	88%
	Non-Hispanic/Latino	11%	28%	8%
	Not specified	0%	9%	4%

Changes in ages of persons diagnosed with COVID, Denver

COVID-19 Percent of Cases by Age Group

Denver COVID-19 Cases

● All Denver COVID-19 Cases

○ Denver COVID-19 Cases NOT in Congregate Settings

0-9 Yrs

10-19 Yrs

20-29 Yrs

30-39 Yrs

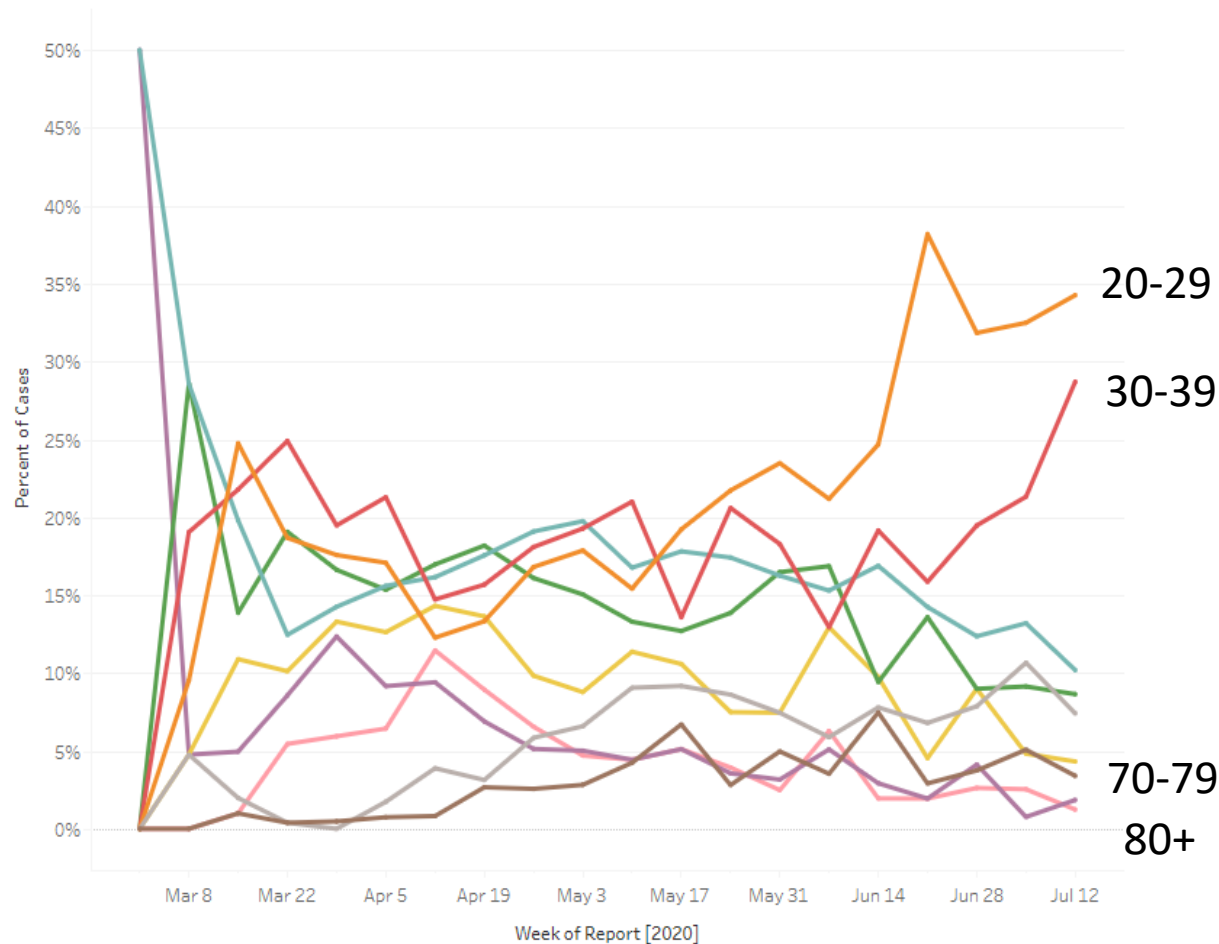
40-49 Yrs

50-59 Yrs

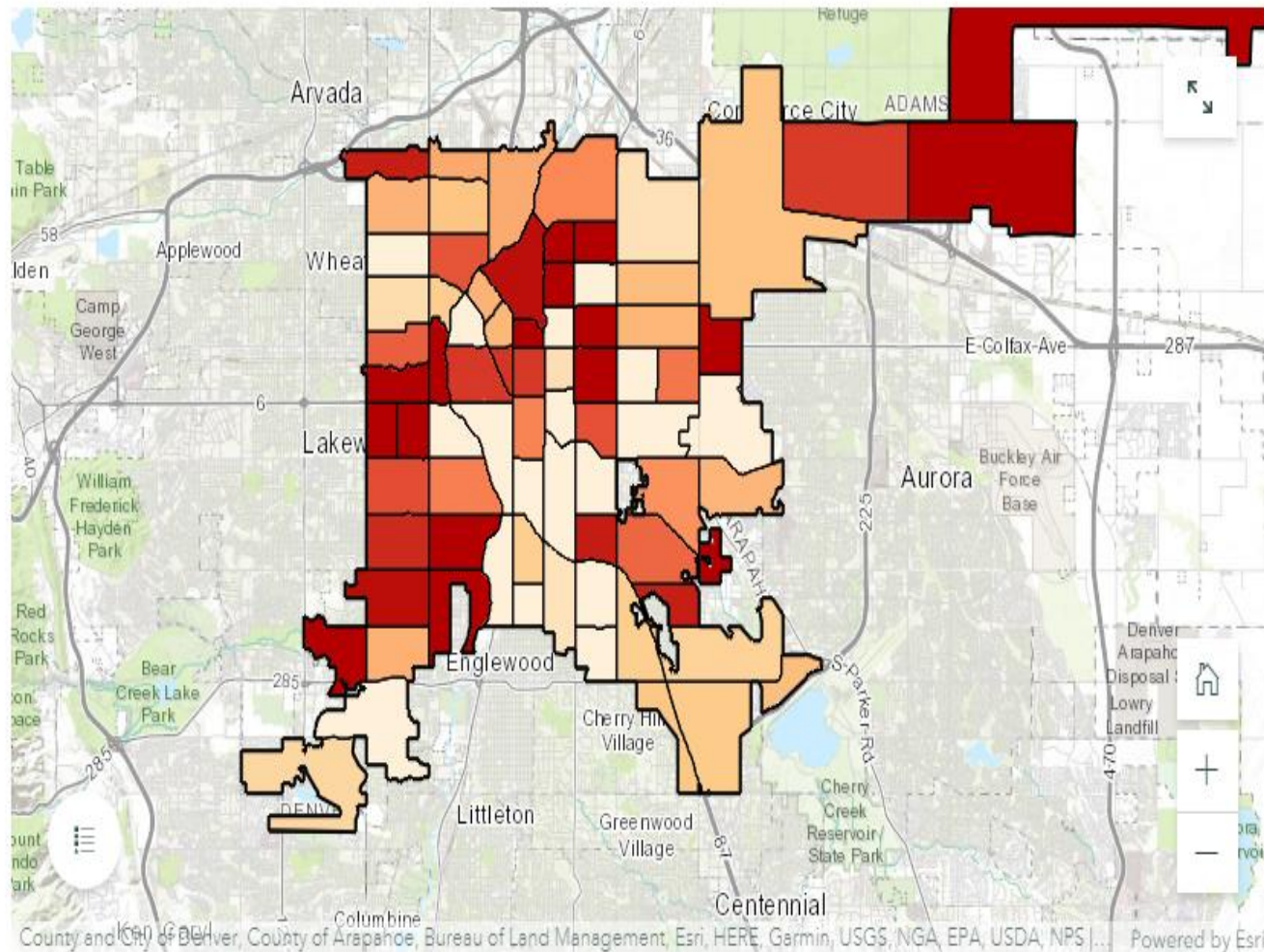
60-69 Yrs

70-79 Yrs

80+ Yrs



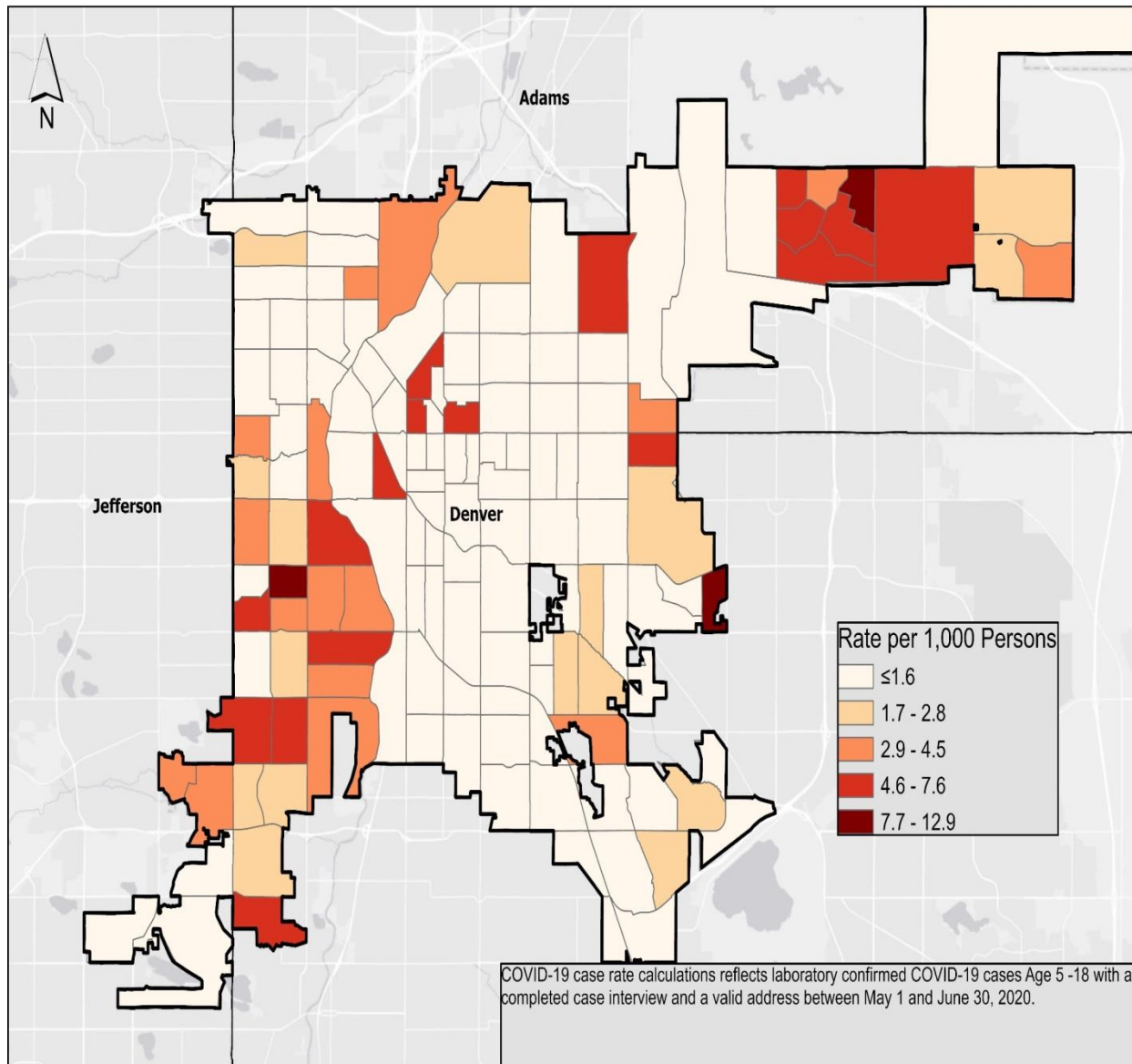
Recent COVID cases (7/12-7/18), by neighborhood



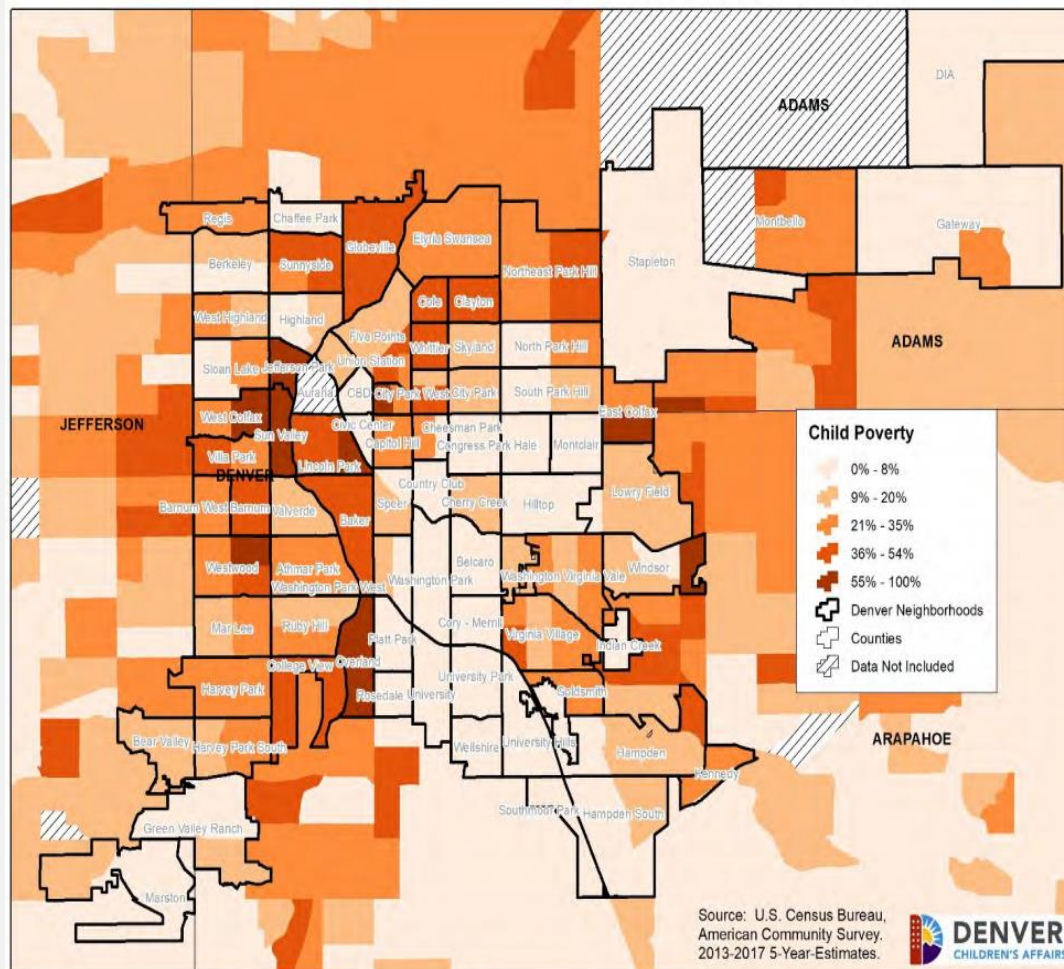
COVID-19 Case Rate per 1,000 persons by Denver Neighborhood: July 12 - July 18, 2020

COVID-19 Case Rate per 1,000 Persons by Census Tract: May - June, 2020

Ages 5 - 18

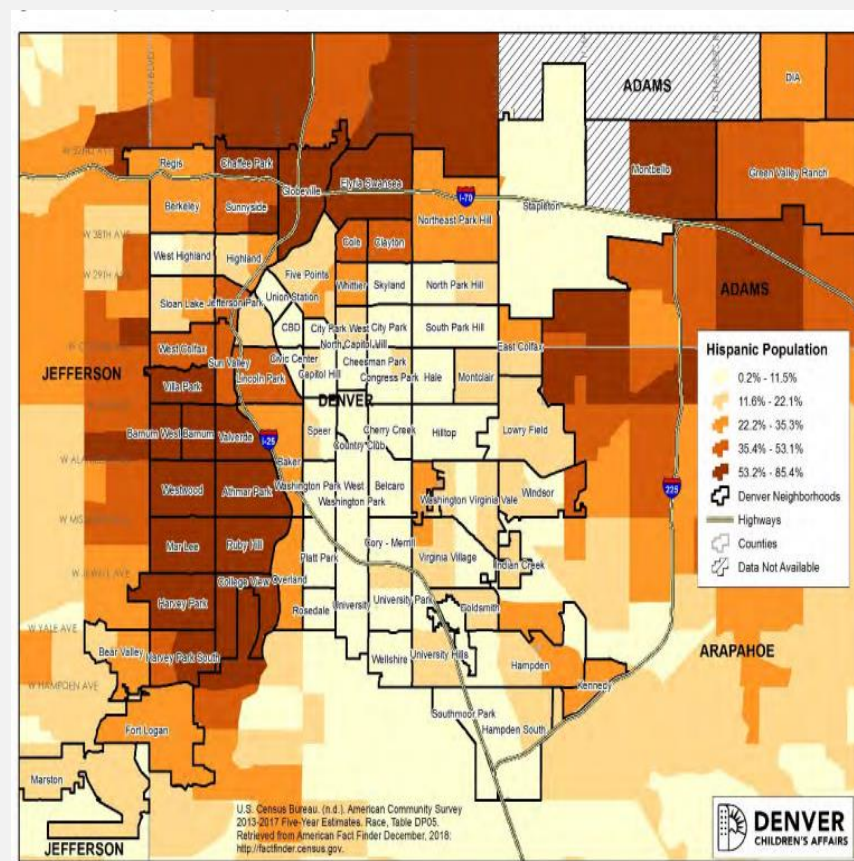
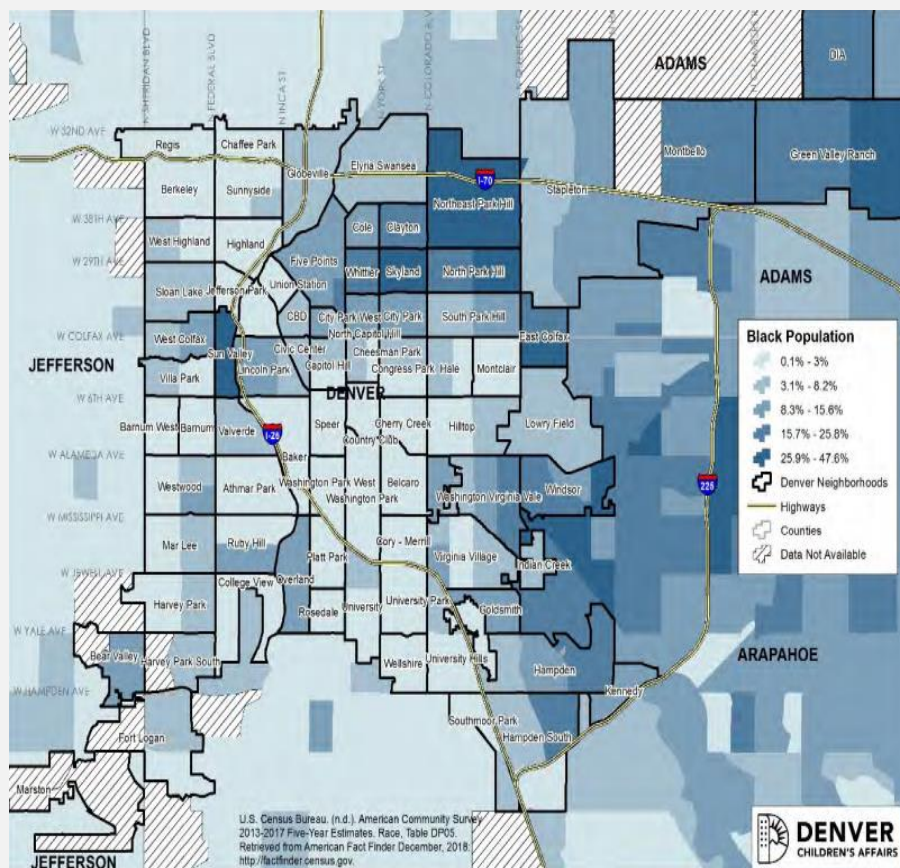


Geography of poverty in Denver County



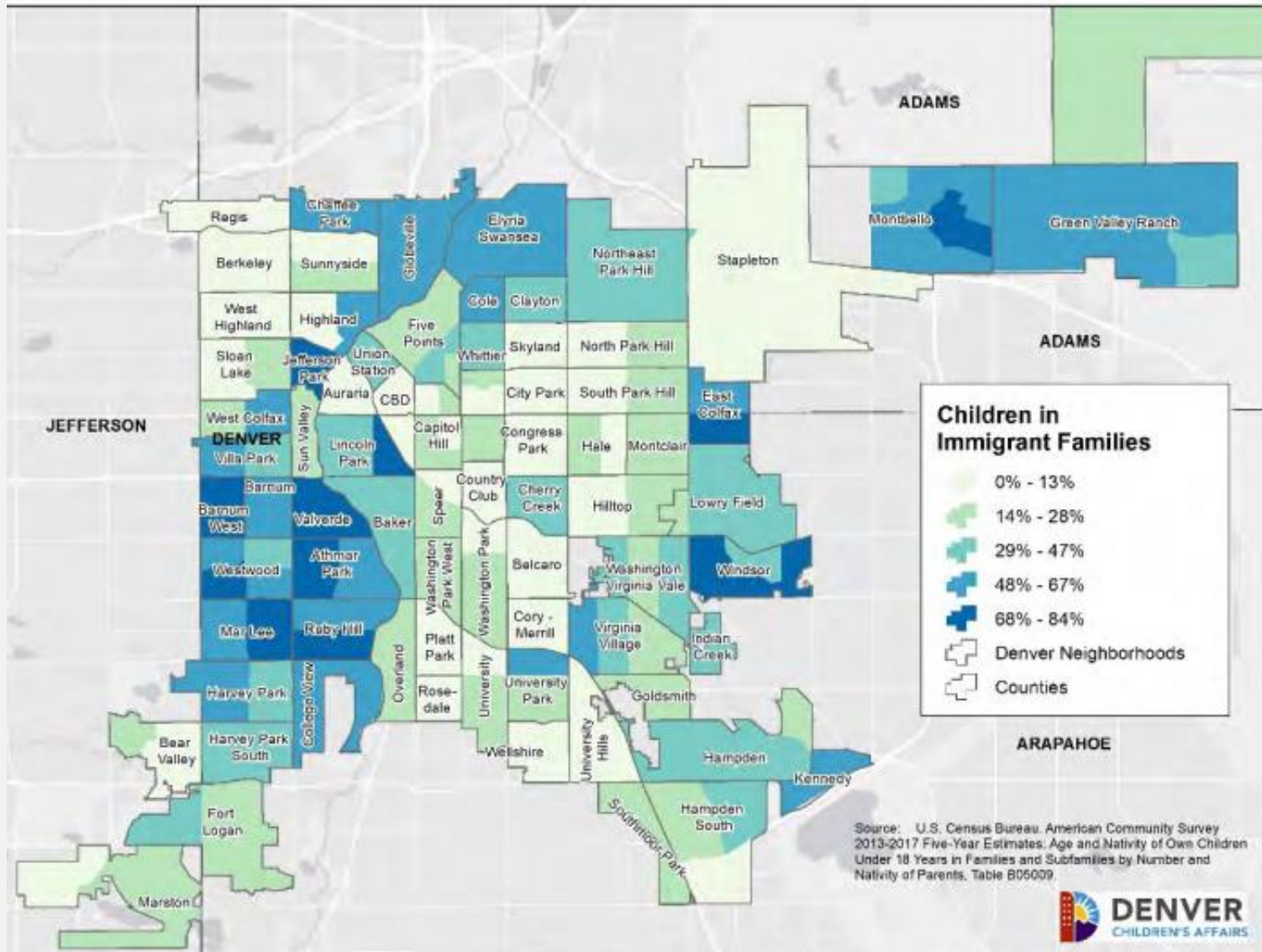
https://www.denvergov.org/content/dam/denvergov/Portals/713/documents/data-resources/StatusOfDenversChildren_ADA_2019.pdf

Geography of race in Denver County



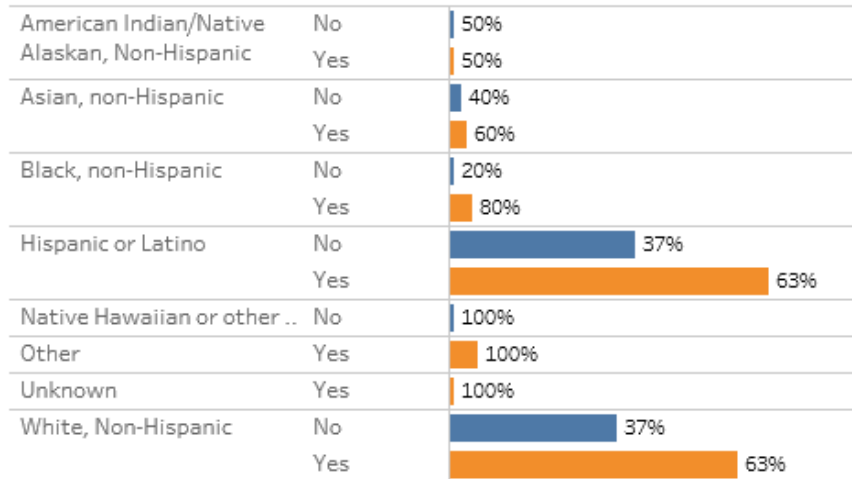
https://www.denvergov.org/content/dam/denvergov/Portals/713/documents/data-resources/StatusOfDenversChildren_ADA_2019.pdf

Geography of immigrant families (2019)

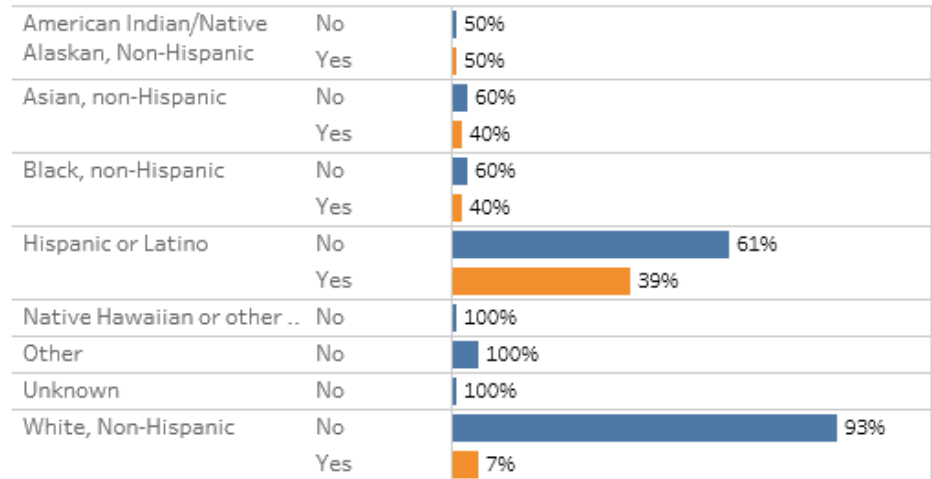


Needs for support among persons recently diagnosed with COVID, (Denver County)

Primary Care Provider



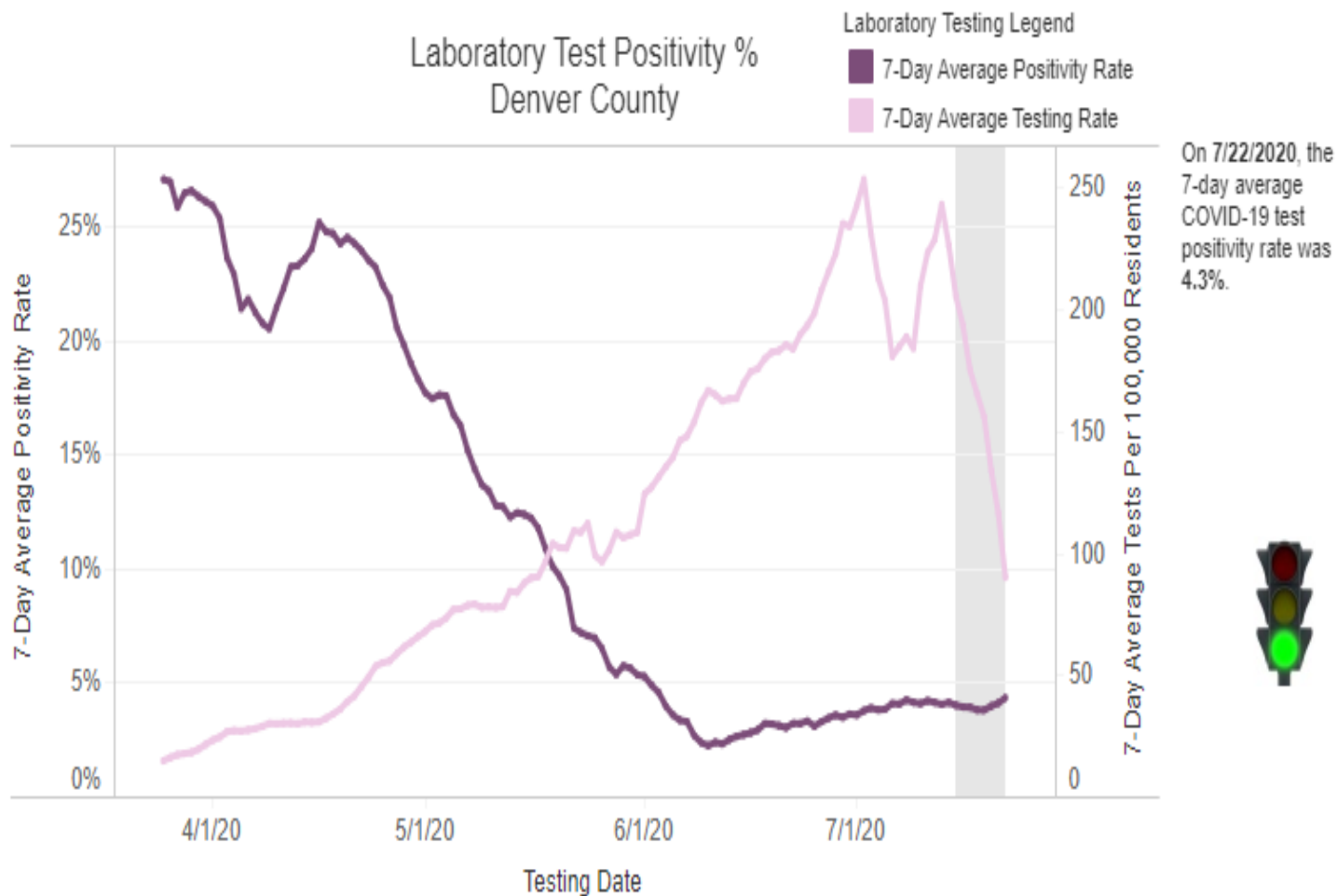
Financial Concerns



35% - no primary care provider

23% - current financial concerns

Testing in Denver County and percent positive

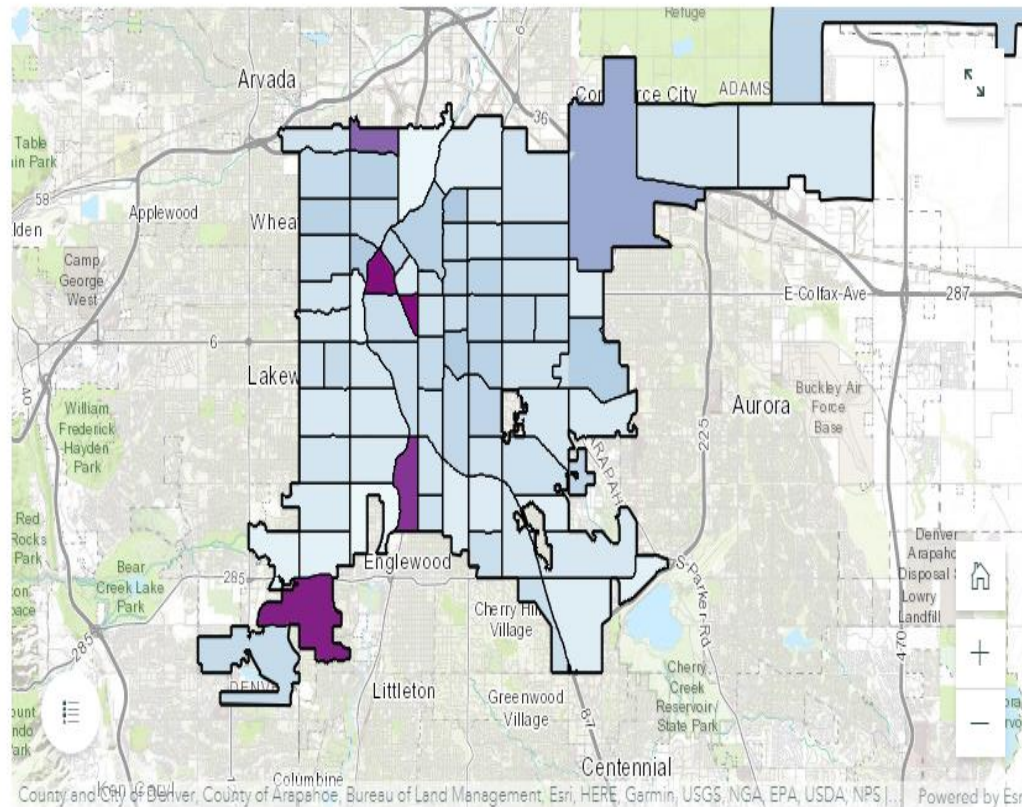


Data in the shaded area may be incomplete due to delays in laboratory analysis and reporting.

Recent COVID testing (7/12 – 7/18), by neighborhood

14

Denver COVID-19 Data Summary



COVID-19 Testing Rate per 1,000 persons by Denver Neighborhood: July 12 - July 18, 2020

Controlling COVID – trying to overcome decades of systematic racism in the midst of a pandemic

15

- COVID infection and severe disease are highly associated with race, poverty, and immigrant status
 - Lack of culturally-appropriate communication
 - Lack of trust in government
 - Lack of access to healthcare
 - Lack of paid sick leave
 - Poverty
 - Crowded households

Making the test, support, and trace strategy work

Challenge	Intervention
Assuring access to testing by those at highest risk	<ul style="list-style-type: none">• Free, convenient, quick testing• Outreach events in high-risk communities
Needs for support among persons with COVID	<ul style="list-style-type: none">• Targeted home visitation – assess and test• Partnership with Denver Human Services – access to assistance
Reluctance to share information on close contacts	<ul style="list-style-type: none">• Communication through trusted cultural brokers (promotoras, patient navigators)• Case supporters and tracers from affected communities
Low vaccination rates	<ul style="list-style-type: none">• Expanded in-school vaccination program• Outreach vaccination to underserved adults

July 23, 2020 - Department of Medicine Town Hall

Rachel Herlihy, MD, MPH
State Epidemiologist

Colorado Department of Public Health & Environment



What are we measuring and why?

Case
Burden



Public Health Disease Control Capacity
Outbreak Burden- disruption of work/school
Testing Capacity
Outpatient healthcare

Hospital
Burden



Hospital Bed Capacity
ICU Bed Capacity
Alternate Care Site Beds
Hospital Staffing and Supplies

Mortality

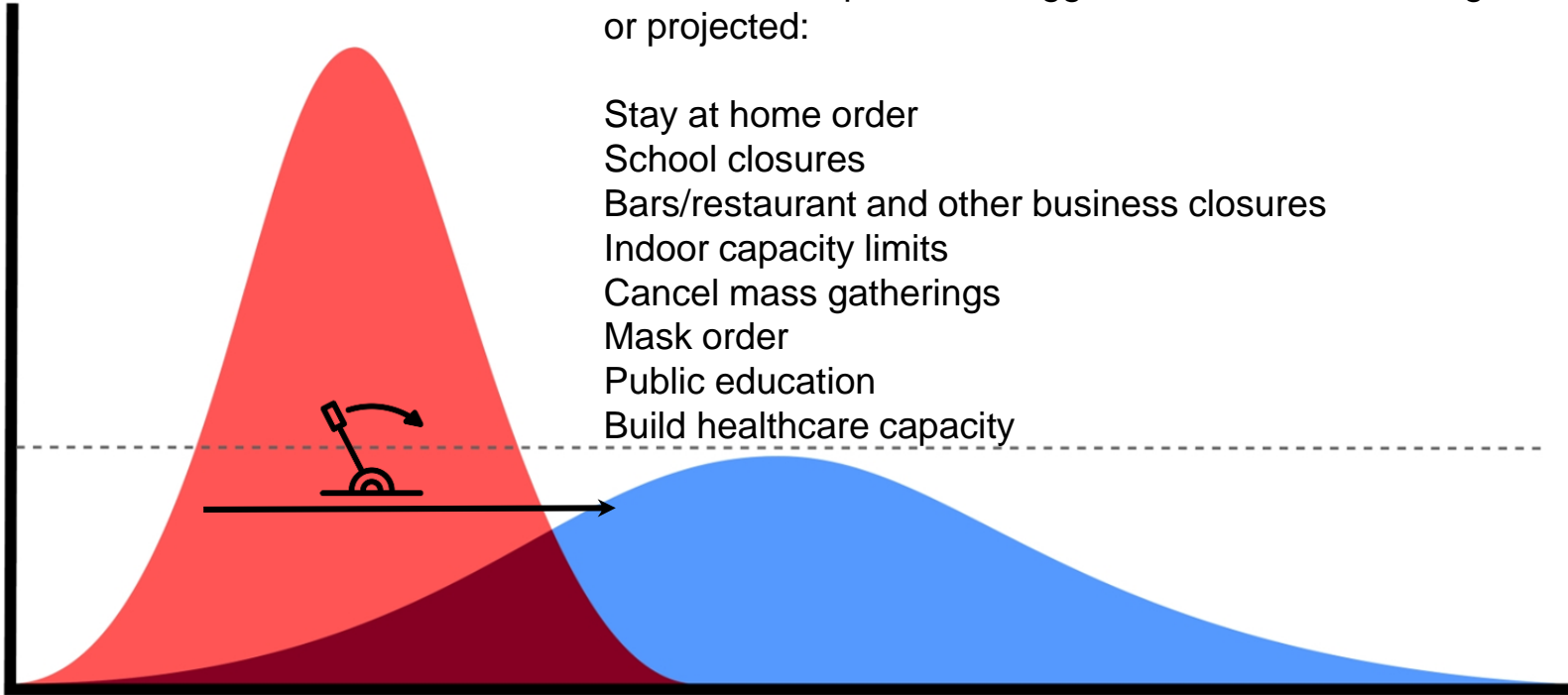


Saving Lives
Mortuary Capacity

What do we do when burden is too high?

The levers we pull when triggers are reached, nearing, or projected:

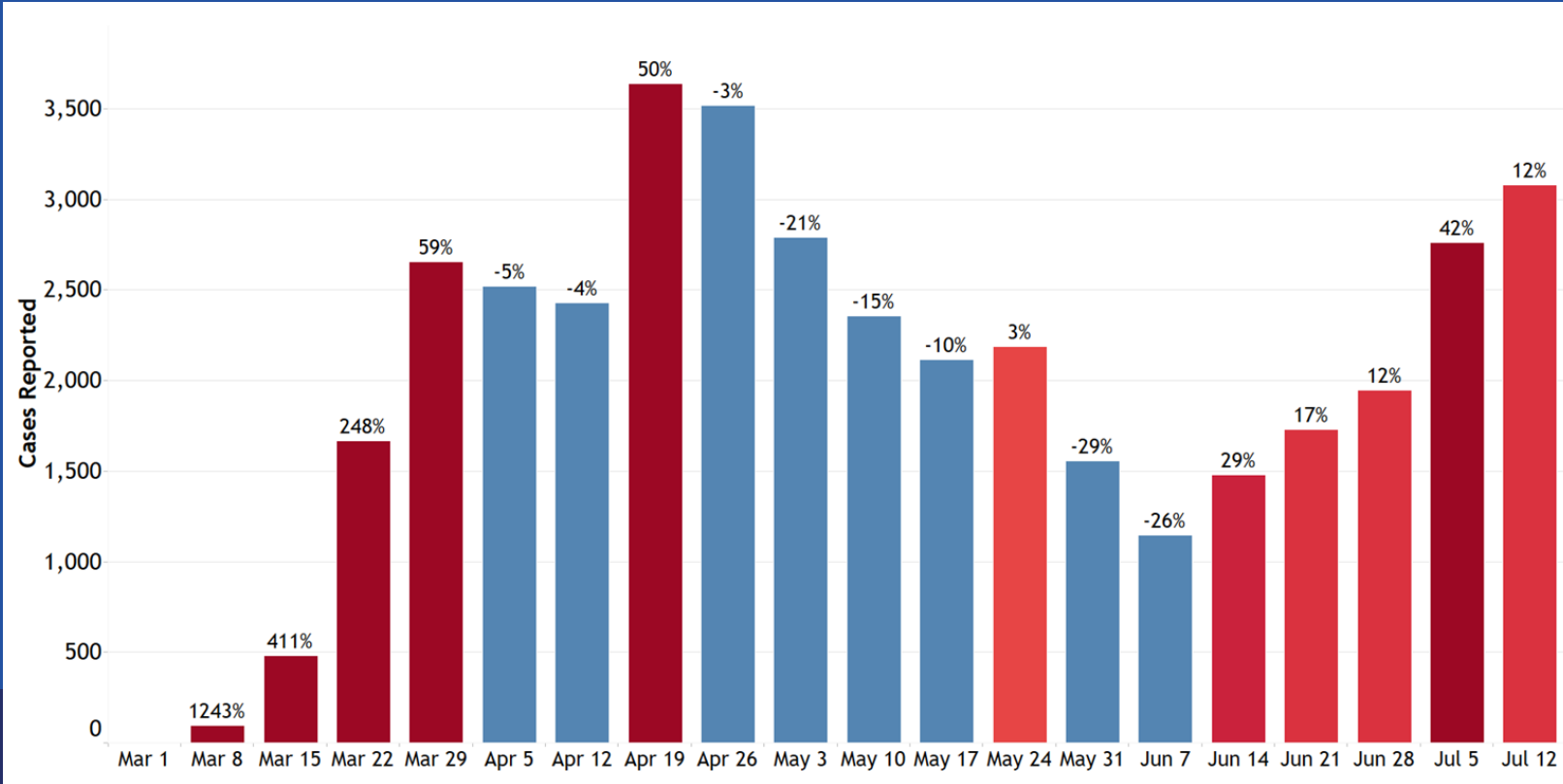
- Stay at home order
- School closures
- Bars/restaurant and other business closures
- Indoor capacity limits
- Cancel mass gatherings
- Mask order
- Public education
- Build healthcare capacity



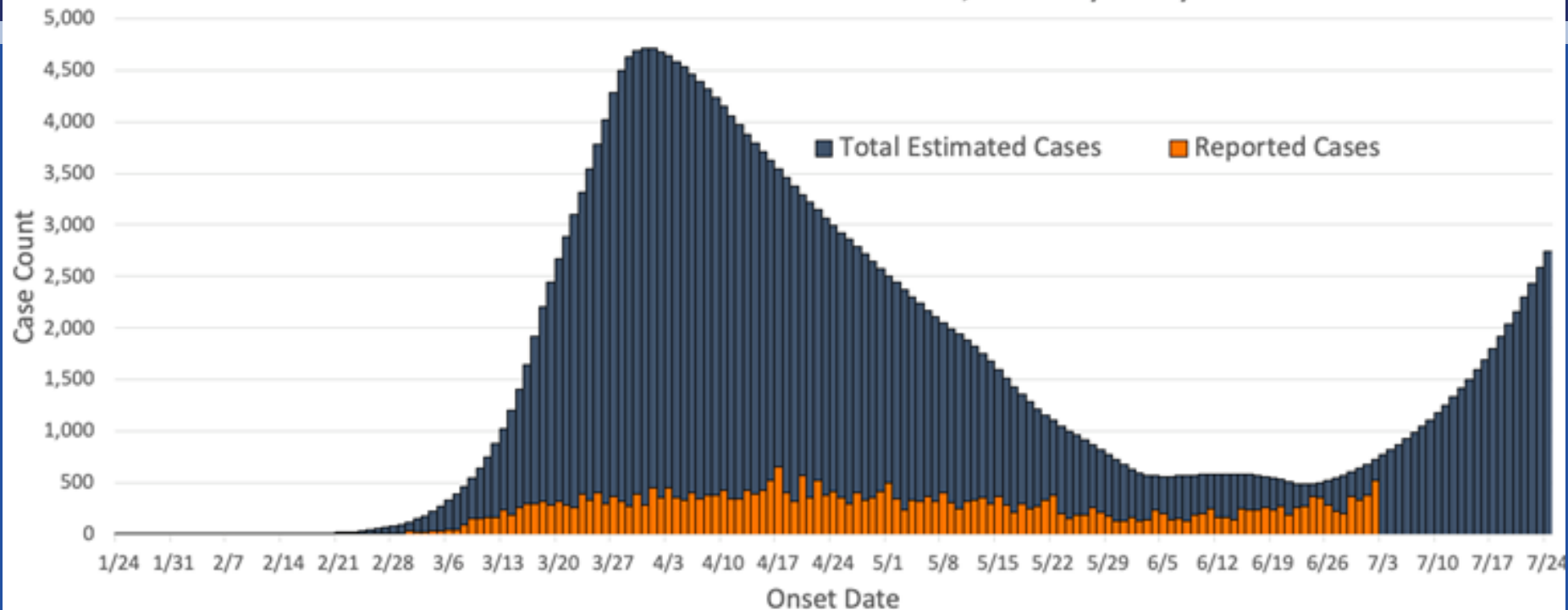
Surveillance Indicators/Tools

- Cases- daily counts, weekly/moving average trends including evidence of acceleration
- Laboratory testing- capacity and percent positivity
- Hospitalizations- currently hospitalized and new admissions
- Modeling
 - Forecast cases, healthcare need compared to capacity
 - Timing
 - Scale
 - Measure impact of previous interventions, identify need for interventions, estimate impact of potential interventions

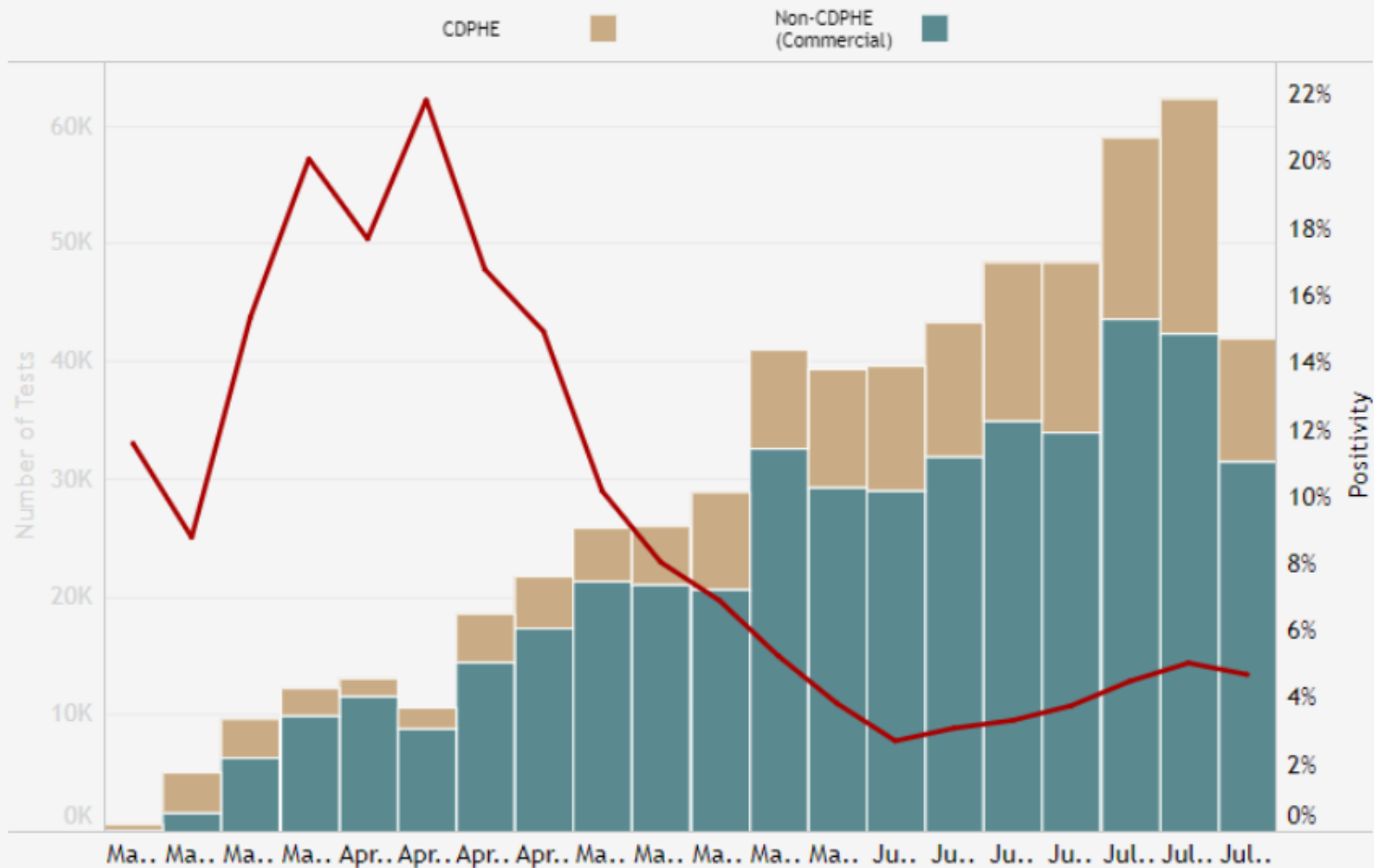
Cases Reported - Percent Change by Week



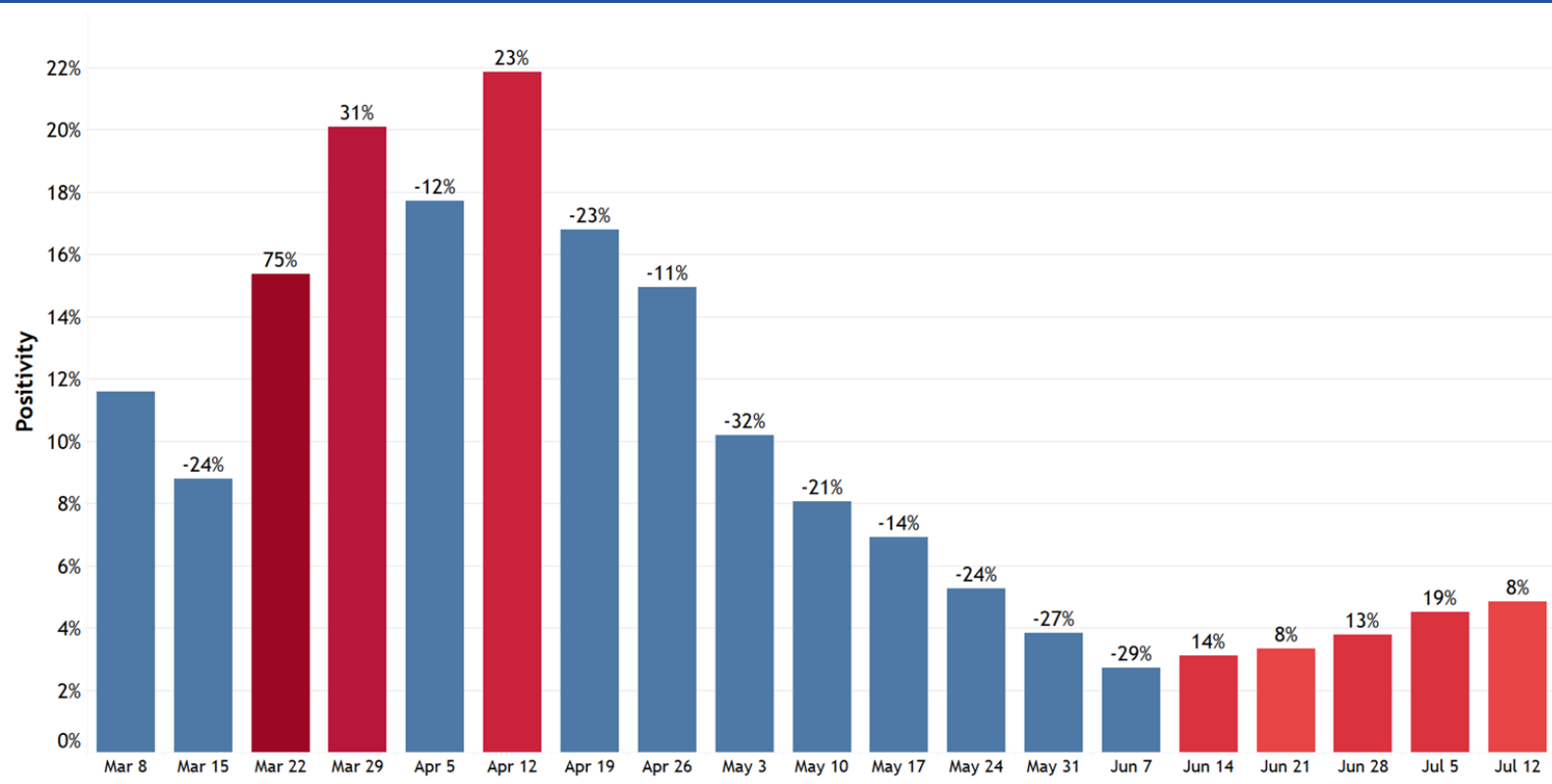
Model Estimate of Expected Incident Cases (Symptomatic + Asymptomatic) vs. Observed Cases of COVID-19 in Colorado, January - July 2020



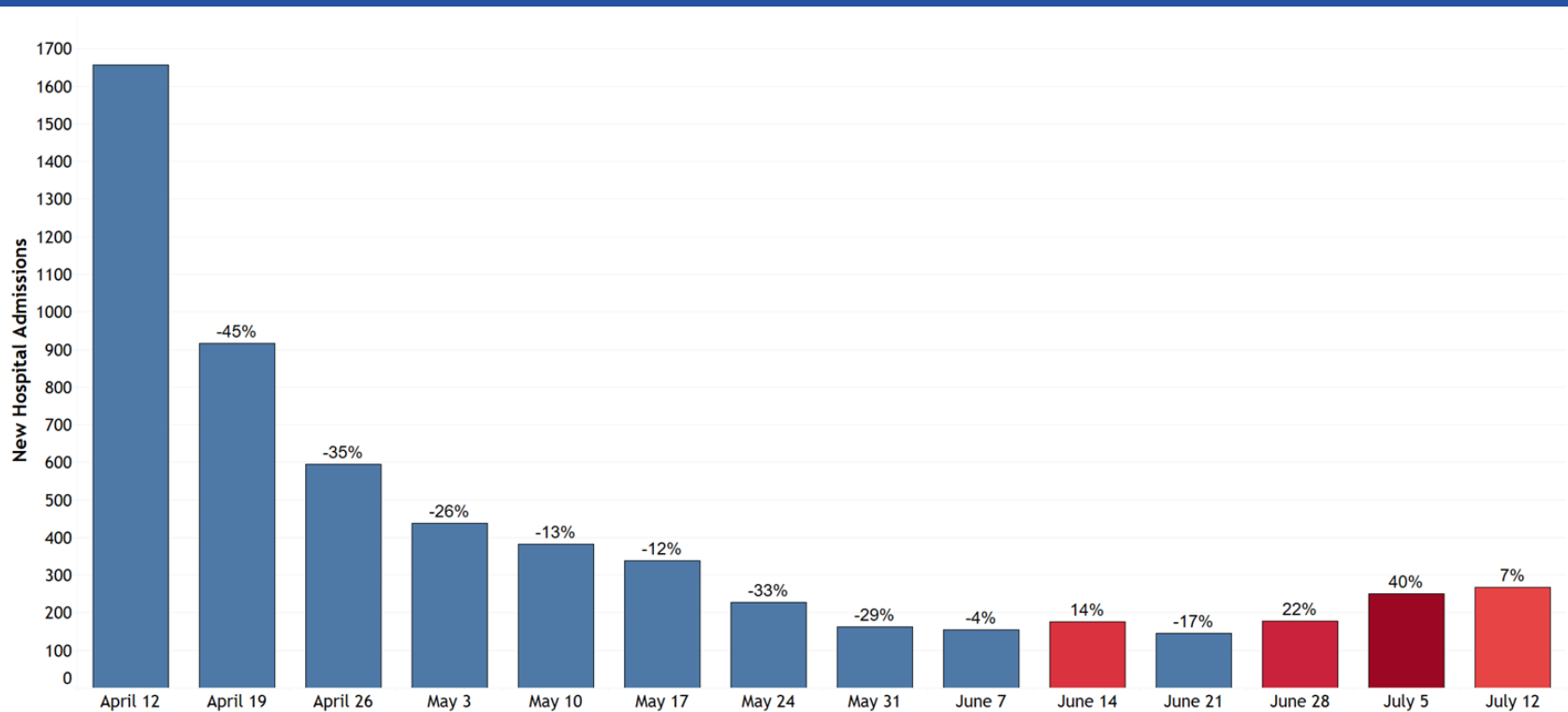
Weekly Positivity Data From Clinical Laboratories



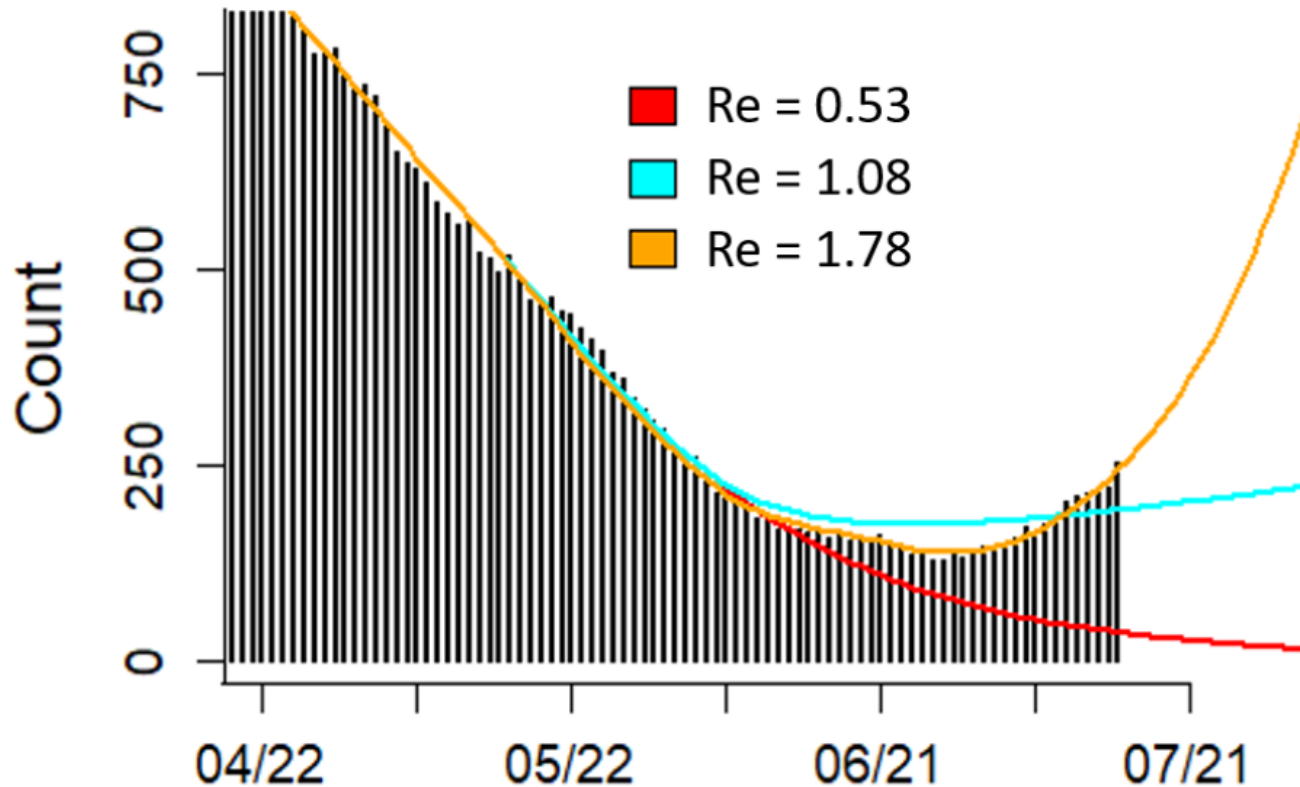
Diagnostic Test Positivity - Percent Change by Week

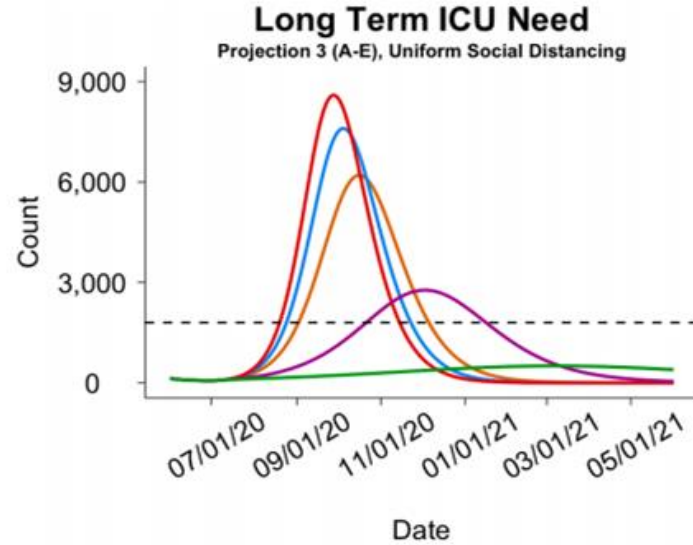
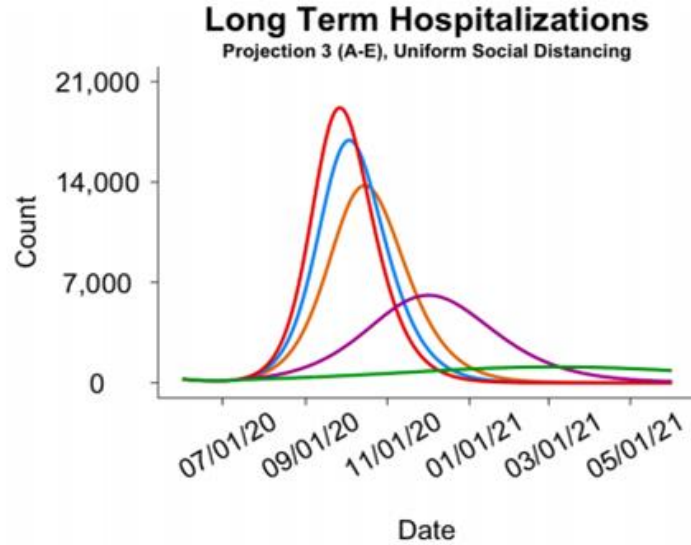


Hospital Admissions - Percent Change by Week



Trajectory of COVID-19 Hospitalization by Levels of Social Distancing





41% SD (Current) 35% SD 30% SD 55% SD 65% SD

This scenario assumes all mask wearing, and case isolation remains at current levels. Based on CDC recommendations, the 65%, 55%, 35% and 30% scenarios assume half of older adults practice high levels of social distancing.

Observed versus Projected Hospitalizations

