



**Ludeman Family Center for Women's Health Research**  
UNIVERSITY OF COLORADO ANSCHUTZ MEDICAL CAMPUS

COMMUNITY OUTREACH

RESEARCH

EDUCATION



► Agenda:

# Sex Differences Across the Lifespan

Focusing on **Cardiometabolism & Mental Health**

National Conference

October 23 – 25, 2024

The Broadmoor Hotel

Colorado Springs, Colorado

12:00 PM – 3:00 PM

Room: West Ballroom Foyer

## ▶ Conference Check-in

3:00 AM – 5:05 PM

Room: West Ballroom

## ▶ Scientific Session I

*20-minute presentations followed by a 15-minute panel discussion*

**Topic**                      **It takes two:** Maternal health and paternal influences on pregnancy outcomes

**Chairs**                      **Yoel Sadovsky, MD** (Magee-Womens Research Institute, University of Pittsburgh)  
**Laura Brown, MD** (University of Colorado School of Medicine)

**Speakers**                      **Impact of Paternal Stress on Sperm and Offspring Outcomes**  
– Tracy Bale, PhD (University of Colorado School of Medicine)

**Dynamic Modeling on the Development of Preeclampsia**  
– Leslie Myatt, PhD, FRCOG (Oregon Health & Science University)

**Lifestyle Interventions in Obese Women to Improve Maternal Metabolism and Offspring Outcomes** – Patrick Catalano, MD (Tufts University School of Medicine)

**Longitudinal Assessment of Glycemia in Health, Non-Diabetic Pregnant Women**  
– Uma Reddy, MD, MPH (Columbia University Irving Medical Center)

## ▶ Five-Minute Data Blitz

6:00 PM – 7:00 PM

Room: West Tower Lobby | Food: Hors d'oeuvres and cocktails

## ▶ Cocktail Reception

7:00 PM – 9:00 PM

Room: West Ballroom Foyer | Food: Plated Dinner

## ▶ Opening Dinner

*Conference Attendees & Community Members*

**Welcome to the 2024 National Conference**

**Remarks**                      **Judy Regensteiner, PhD** (University of Colorado School of Medicine)– Introductory Remarks

7:00 AM

**Room:** West Ballroom Foyer | **Food:** Breakfast Buffet

## ▶ Breakfast Opens

7:30 AM – 9:35 AM

**Room:** West Ballroom

## ▶ Scientific Session II

*20-minute presentations followed by a 15-minute panel discussion*

**Topic**                      **Cardiovascular Disease in Women:** What have we learned?

**Chairs**                      **JoAnn Lindenfeld, MD** (Vanderbilt University School of Medicine)  
**Erin Michos, MD** (Johns Hopkins School of Medicine)

**Speakers**                      **Heart Failure in Women:** Past and Present  
– *JoAnn Lindenfeld, MD (Vanderbilt University School of Medicine)*

**Sex Differences in Cardiovascular Disease**  
– *Erin Michos, MD (Johns Hopkins School of Medicine)*

xxxxxx – *Speaker 3*

xxxxxx – *Speaker 4*

## ▶ Five-Minute Data Blitz

9:35 AM – 9:55 AM

**Food:** Beverage service (coffee, tea)

## ▶ Break

9:55 AM – 12:00 PM

Room: West Ballroom

## ▶ Scientific Session III

*20-minute presentations followed by a 15-minute panel discussion*

**Topic**                      **Obesity and Diabetes in the era of durable weight loss**

**Chairs**                      **Jane Reusch, MD** (University of Colorado School of Medicine)

**Speakers**                **Does behavior change matter anymore?**  
– *Judy Regensteiner, PhD* (University of Colorado School of Medicine)

**Topic 2**  
– *Speaker 2*

**Topic 3**  
– *Speaker 3*

**Topic 4**  
– *Speaker 4*

## ▶ Five-Minute Data Blitz

12:00 PM – 12:15 PM

Room: West Ballroom Foyer | Food: Lunch Buffet

## ▶ Break

12:15 PM – 1:30 PM

Room: West Ballroom | Food: Lunch Buffet

## ▶ Lunch Networking Session

1:30 PM – 2:00 PM

Food: Beverage service (coffee, tea)

## ▶ Break

2:00 PM – 4:05 PM

Room: West Ballroom

## ▶ Scientific Session IV

*20-minute presentations followed by a 15-minute panel discussion*

**Topic**                      **Maternal Mortality -- a U.S. tragedy**

**Chairs**                      **Nanette Wenger, MD** (Emory University School of Medicine)  
**Amy Huebschmann, MD** (University of Colorado School of Medicine)

**Speakers**                      **“Maternal Mortality – can a U.S. tragedy be reversed?”** – *Nanette Wenger, MD (Emory University School of Medicine)*

**Hypertensive and Diabetic Complications of Pregnancy:** Long-term Implications for Both Mother and Offspring – *Kathryn Lindley, MD (Vanderbilt University School of Medicine)*

**The role of prevention:** implementing community-engaged pre-conception counseling in the U.S. – *Natalie Hernandez, PhD, MPH (Morehouse School of Medicine)*

**Exciting Advances to Improve Maternal Health from South of the U.S. Border**  
– *Johanna Contreras, MD (Mount Sinai School of Medicine)*

## ▶ Five-Minute Data Blitz

4:05 PM – 5:30 PM

Room: West Ballroom | Food: Hors d'oeuvres and cocktails

## ▶ Judged poster session & reception

5:30 PM – 7:30 PM

Room: Main Ballroom | Food: Casual dinner with food stations

## ▶ Casual dinner

7:00 AM

Room: West Ballroom Foyer | Food: Continental Breakfast

## ▶ Breakfast Opens

7:30 AM – 8:15 AM

Room: West Ballroom | Food: Continental Breakfast

## ▶ Keynote Address

8:15 AM – 9:50 AM

Room: West Ballroom | Food: Continental Breakfast

## ▶ Scientific Session V

*20-minute presentations followed by a 15-minute panel discussion*

**Topic** Big data and women's health: genes and behavior

**Chairs** **Casey Greene**, PhD (University of Colorado School of Medicine)  
**Noémie Elhadad**, PhD (Columbia University Vagelos College of Physicians and Surgeons)

**Speakers** **Genetics** – *Barbara Stranger, PhD (Northwestern University Feinberg School of Medicine)*  
**Machine Learning and women's health- new frontiers**  
– *Noémie Elhadad, PhD (Columbia University Vagelos College of Physicians and Surgeons)*

**Machine Learning-based Detection and Prediction of Sex Differences**  
– *Casey Greene, PhD (University of Colorado School of Medicine)*

**Integrative Informatics and Preterm Birth** – *Marina Sirota, PhD (University of California, San Francisco School of Medicine)*

9:50 AM – 10:15 AM

Food: Beverage service

## ▶ Break

10:15 AM – 12:20 PM

Room: West Ballroom

## ▶ Scientific Session VI

*20-minute presentations followed by a 15-minute panel discussion*

**Topic**                      **Mental Health in Women:** Looking forward

**Chairs**                      **Neill Epperson**, MD (University of Colorado School of Medicine)  
**Tracy Bale**, PhD (University of Colorado School of Medicine)

**Speakers**                      **Sex and gender differences in mental health across the lifespan**  
– Neill Epperson, MD (University of Colorado School of Medicine)  
**Addiction in women** – Jill Becker, PhD (University of Michigan School of Medicine)  
**Role of Sex and hormones on the brain**  
– Liisa Galea, PhD (University of Toronto Institute of Medical Science)  
**Mental health of the pregnant and postpartum maternal brain**  
– Kathleen Morrison, PhD (West Virginia University School of Medicine)

## ▶ Five-Minute Data Blitz

12:20 PM – 12:30 PM

Room: West Ballroom Foyer | Food: Boxed lunch

## ▶ Judy Regensteiner, PhD, Closing Remarks

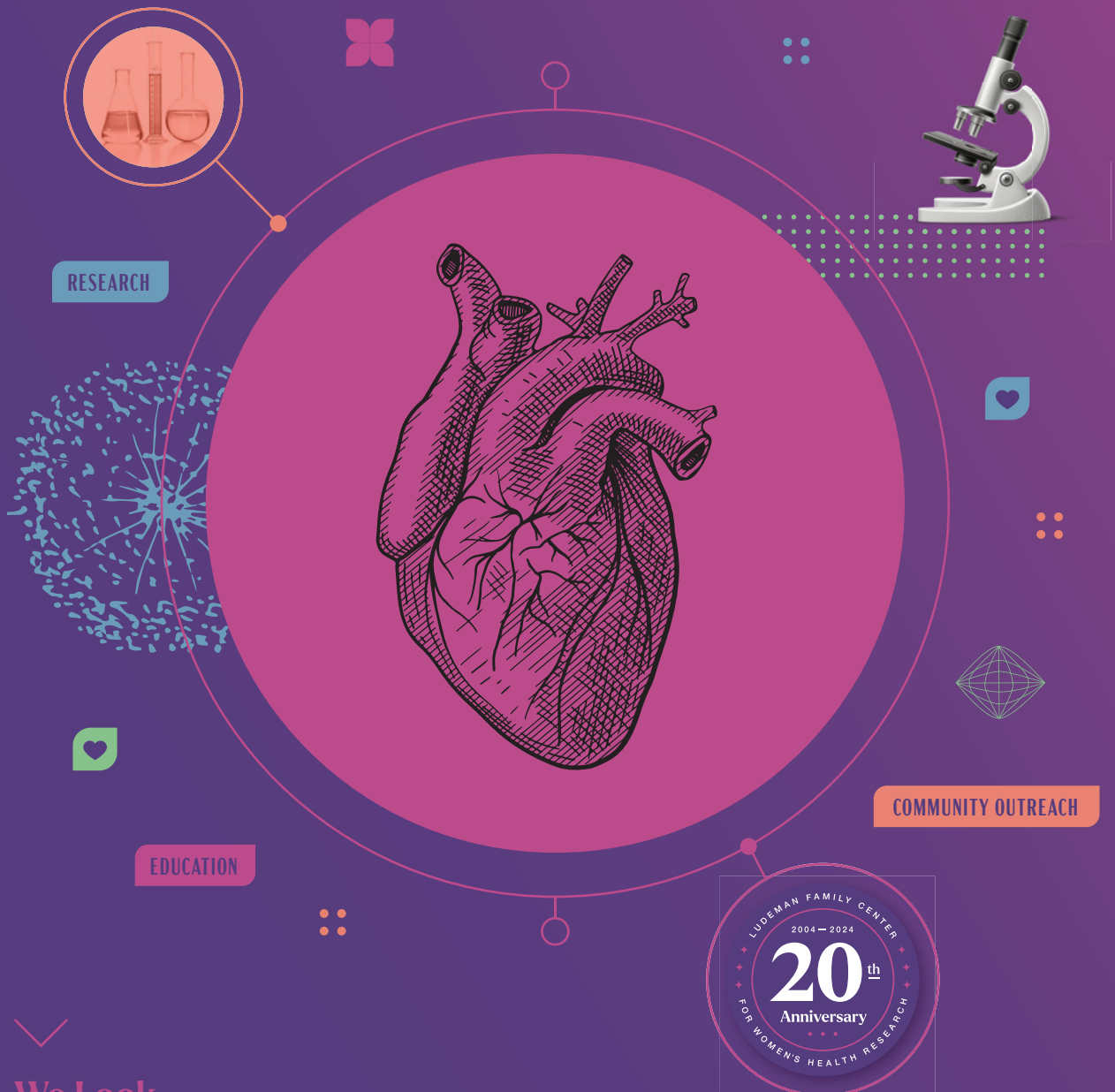
12:30 PM – 2:30 PM

Room: McGrew Room | Food: Plated lunch

## ▶ Community Session Lunch Panel



**Ludeman Family Center for Women's Health Research**  
UNIVERSITY OF COLORADO ANSCHUTZ MEDICAL CAMPUS



✓  
**We Look  
forward to  
seeing you!**

# Sex Differences Across the Lifespan

**Focusing on Cardiometabolism & Mental Health**

National Conference

October 23 – 25, 2024

The Broadmoor Hotel

Colorado Springs, Colorado