

# Health economic modelling update from the UK

## Simulating T1D progression in populations

Professor Richard Oram  
University of Exeter



# Declarations

- Research funding and a licensing agreement with Randox to make a T1D GRS biochip
- Consulting for Sanofi, Novo

# Summary

- UK is at an early stage, with sparse data
- We developed a “digital twin population” that can be adapted to countries with sparse data.
- Potential uses
- “all models are wrong, some are useful”\*

# Initial UK Health economic modelling work

- Led By Dan Pollard, Alan Brennan, Rachel Besser
  - Work in progress
- Initial results: challenge of cost effectiveness for DKA prevention alone
- BUT - modest general population screening data specific to UK



Rachel Besser  
Colin Dayan



Members of the public  
Healthcare professionals  
Researchers



Welcome to the UK Islet Autoantibody Registry

### What is the registry?

A registry of children, young people and adults who are at risk of developing type 1 diabetes because they have markers called islet autoantibodies in their blood

### Our goals

- To keep in touch with those at risk, to let them know about new research, available trials or treatments to delay or prevent type 1 diabetes
- To understand what it is like living with the risk of type 1 diabetes
- To learn what support people need
- To work with public and patient groups and Diabetes UK to guide policy for their care

### Who we are

We are a group of doctors for children and adults with diabetes, psychologists, scientists and researchers working to improve care for those at risk of type 1 diabetes

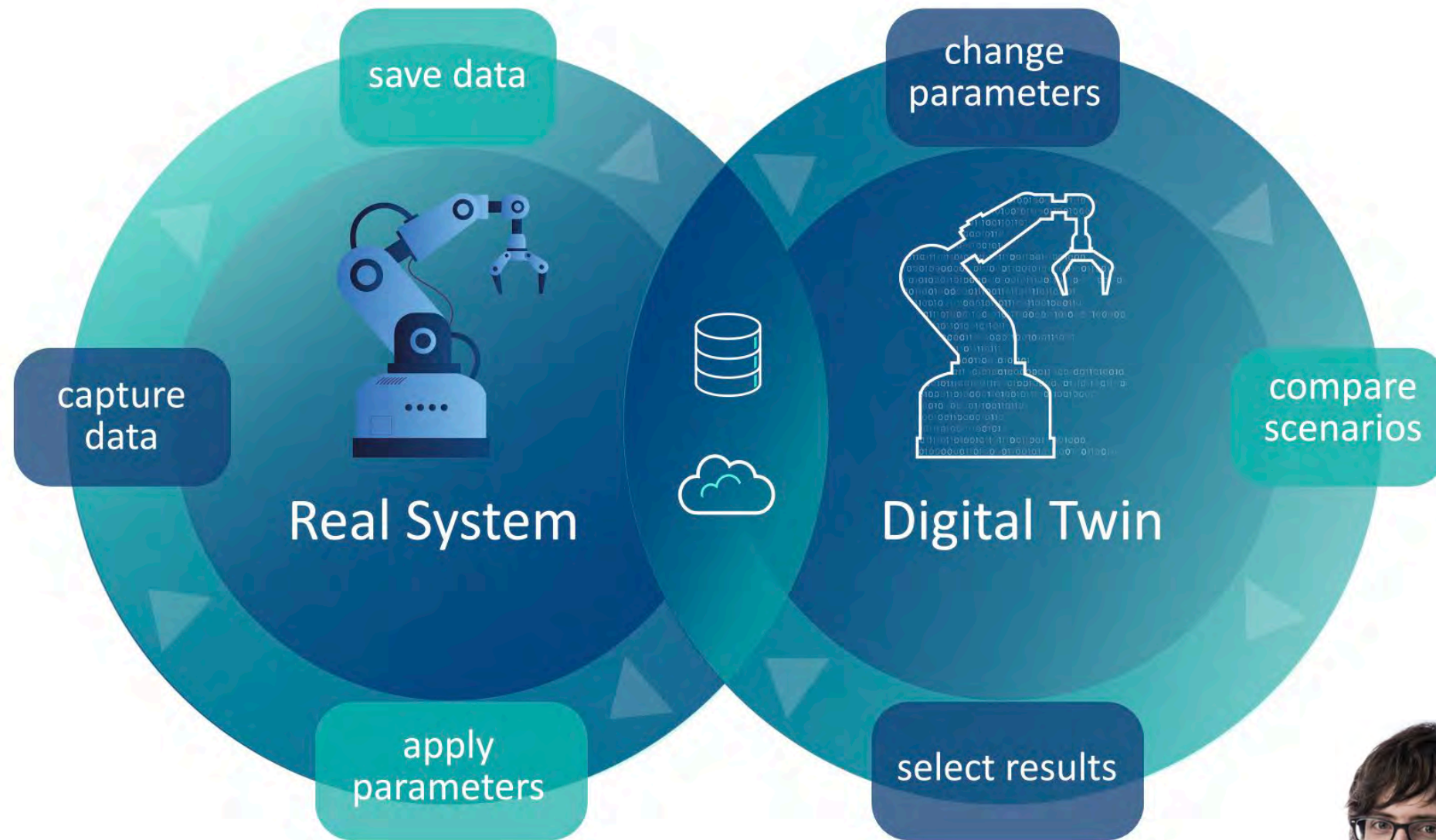


- Free IAb confirmation testing
- [www.ukiab.co.uk](http://www.ukiab.co.uk), live next week

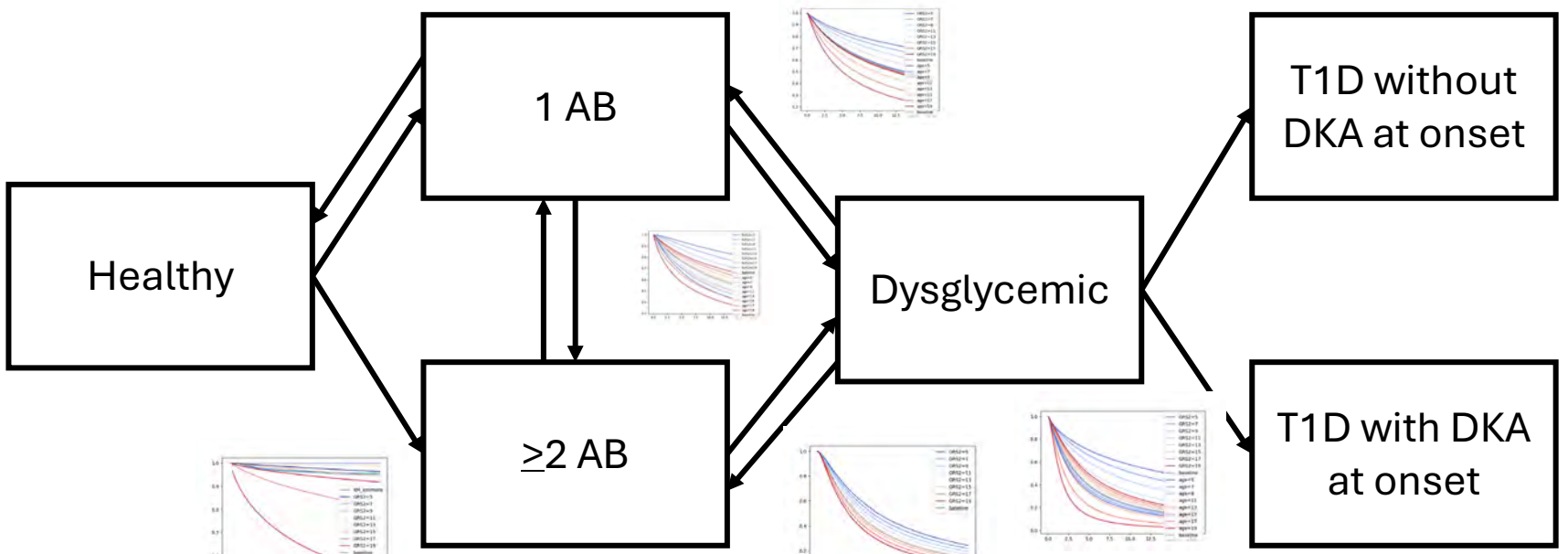
# How to plan screening with little data in your country?

- Are TEDDY/FR1DA etc..generalizable to the UK and elsewhere?
- how could we simulate/model progression of T1D to design and optimize screening
- Can we build a “digital twin” population to simulate screening?

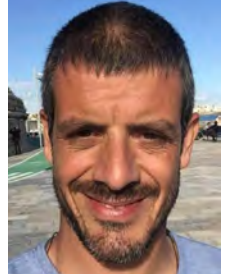




# Modelling pediatric population to simulate screening strategies



Brett McQueen



Gonçalo Leiria

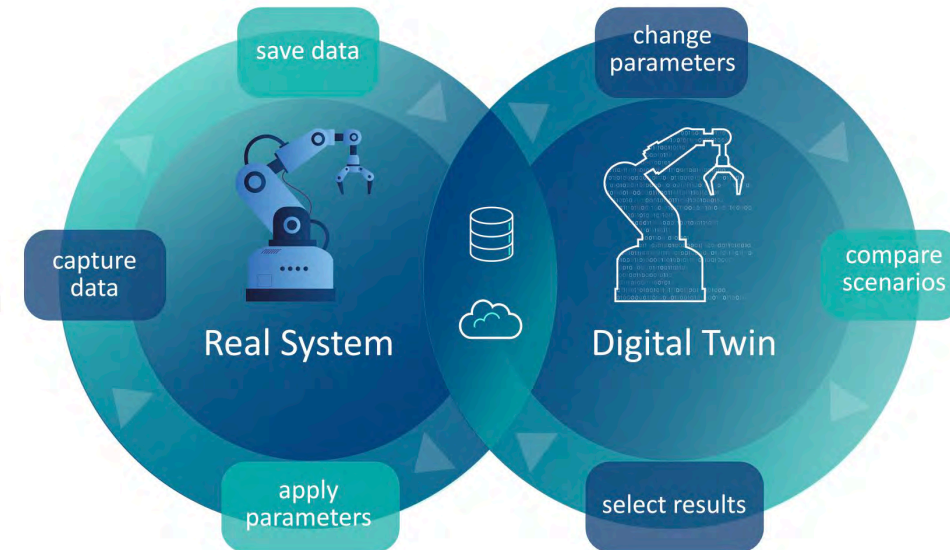
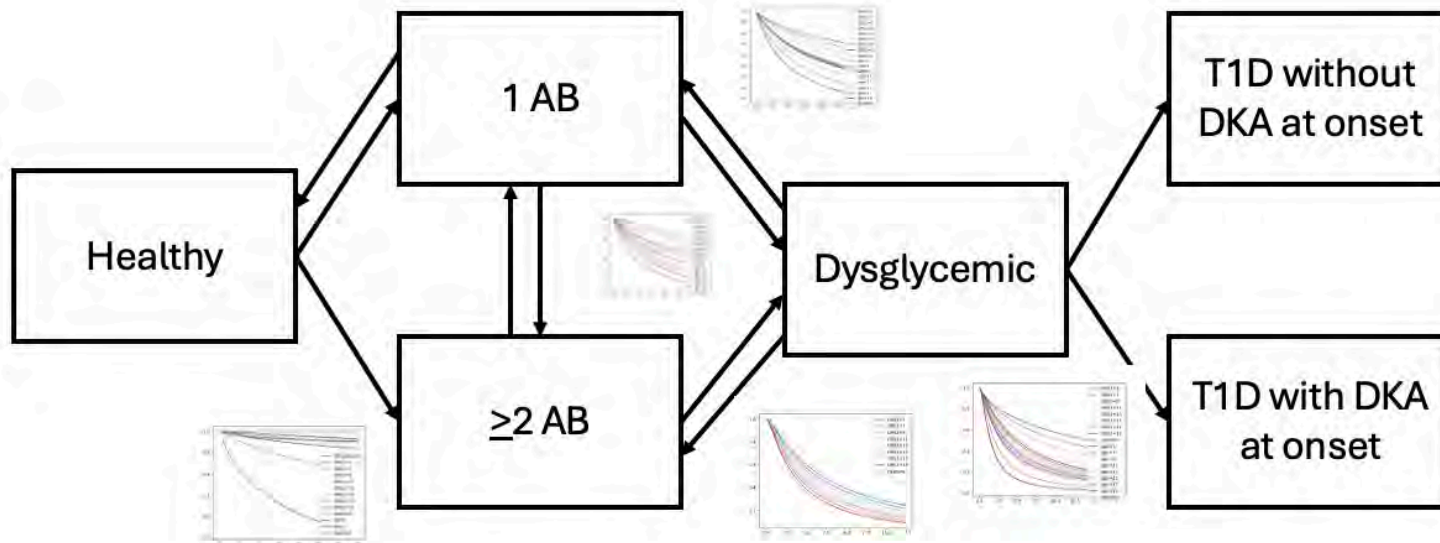
Objective



Lauric Ferrat /Jonathan Fieldsend

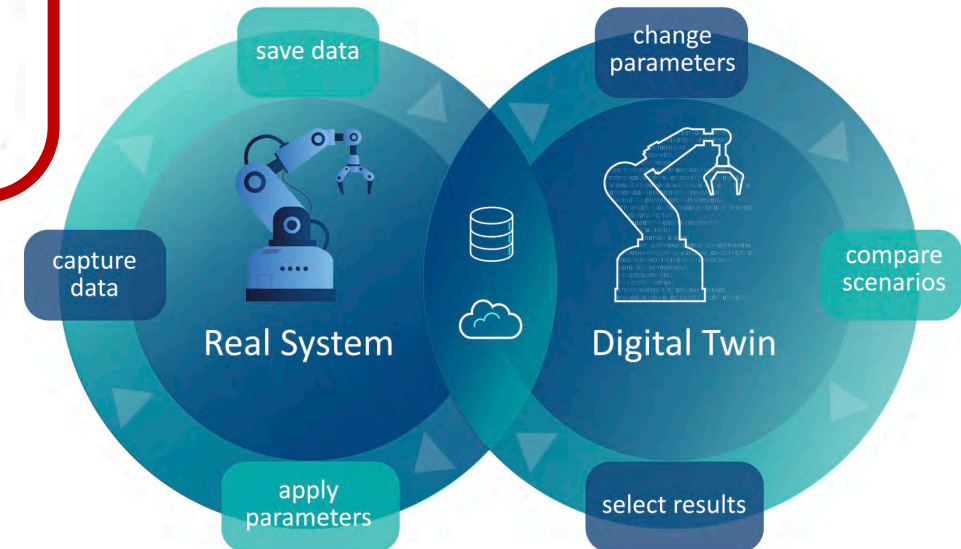
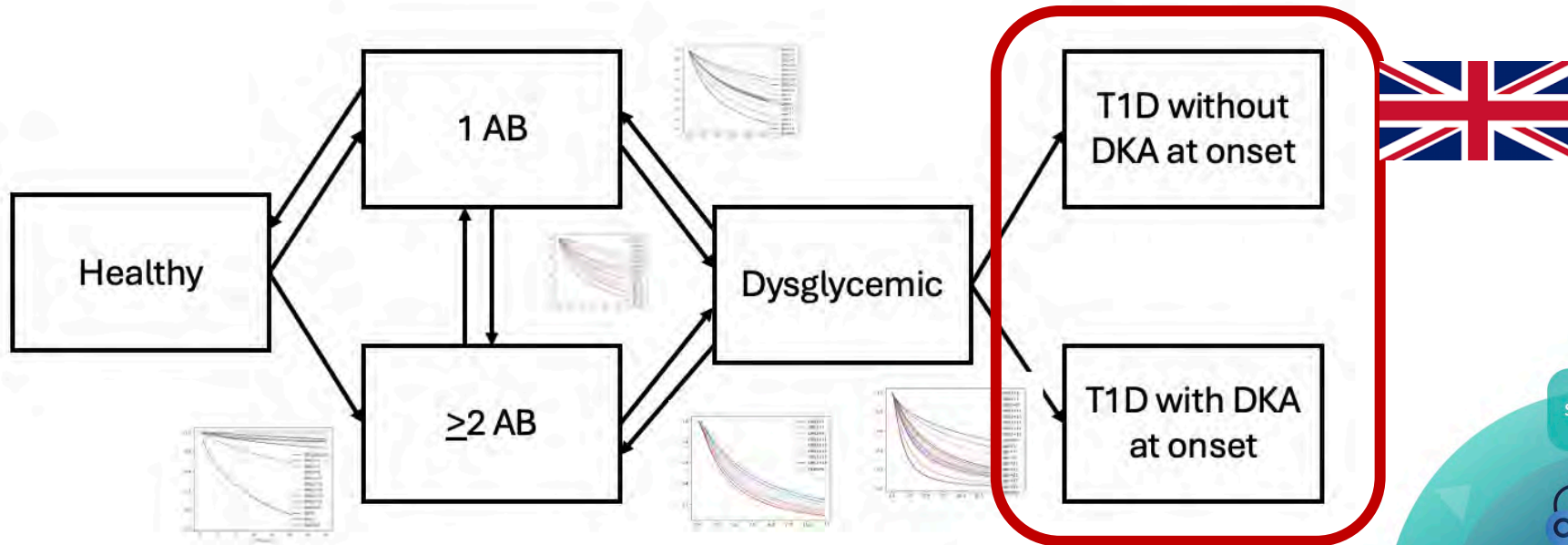


# But why a “digital twin”??



**We need to integrate information from a variety of sources to represent a general population, and we can modify model**

# But why a “digital twin”??

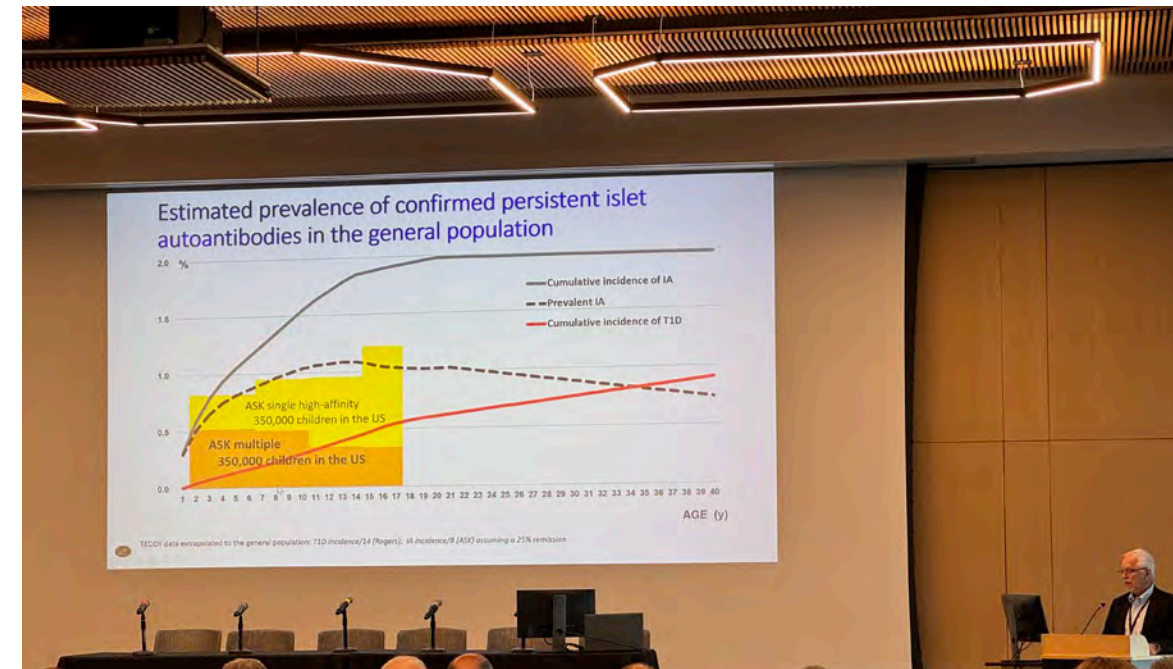


Optimize screening on cost-efficiency,  
remember this is a mathematical solution

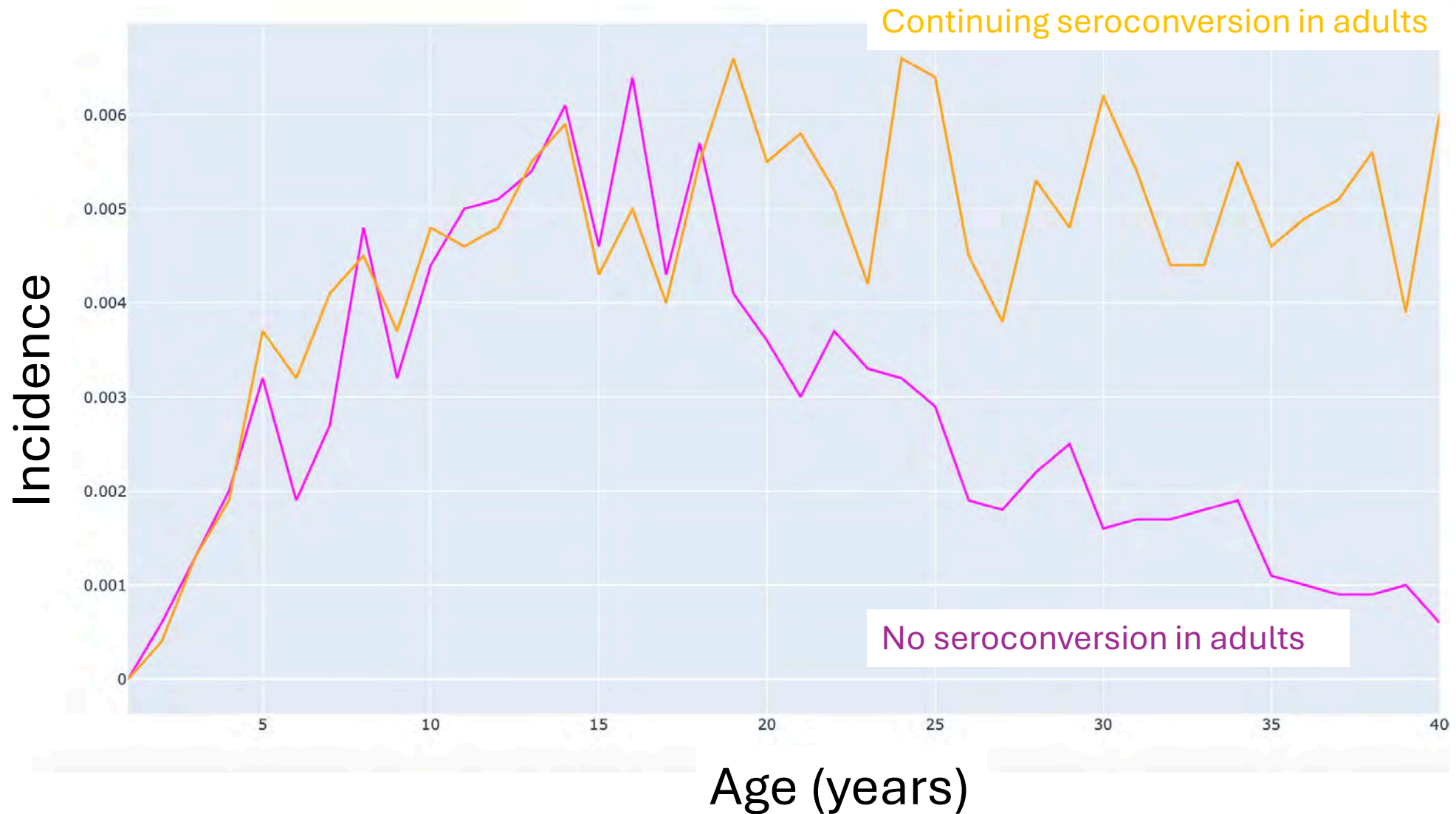


# Playing with the simulated population

- What about adults?
- Are people seroconverting into adulthood?
- Or is all the action in childhood?
- Goncalo can you show me two models of seroconversion?



# Incidence of adult T1D from simulation



# Summary

- UK is at an early stage, with sparse data
- We developed a “digital twin population” that is useful for health economic modelling, planning screening, test treatment effects or to creatively ask questions/generate hypothesis
- We are funded to make this available to others planning screening/intervention

# Acknowledgements

- Research volunteers, people with T1D and their families
- Breakthrough T1D
- Goncalo Leira, Lauric Ferrat, Jonathan Fieldsend, Conner Jackson, Brett Mcqueen, Bill Hagopian, Marian Rewers



UNIVERSITÉ  
DE GENÈVE



**Breakthrough**

**T1D™**

Formerly JDRF

# Acknowledgements

## People with T1D and their families

### Exeter

- **Andrew Hattersley**, Seth Sharp, Mike Weedon, Tim McDonald, Angus Jones, Bev Shields, Nick Thomas, Pam Bowman, Kash Patel, Mike Weedon, Maggie Shepherd, Bea Knight, Nick Thomas, Noel Morgan, Sarah Richardson, Anita Hill, Michelle Hudson, Rob Bolt, Suzie Hammersley, Sam Jones, Tim Frayling, Jamie Harrison, Matthew Johnson, Sarah Flanagan, Sian Ellard, Alice Carr, Brittney Resnick, Gail Aldred, Becky Dobbs, Kev Colclough, Jayne Houghton, Jon Locke

### Baylor College of Medicine

- **Maria Redondo**, Ashok Balasubramanyam

### Randox

- Helena Murray, Mollie Conroy

### IU

- Carmella Evans-Molina, Emily Sims, Jamie Felton,

### Seattle (PNRI)

- Bill Hagopian

### U of A

- Peter Senior, Anne Halpin, Trish Campbell, Andy Mason

### South Florida

- Jeff Krischer, Kendra Vehik

### Cardiff

- Colin Dayan

### Pune

- Ranjan Yajnik

### Sanford Health

- Kurt Griffin

### QMUL

- Sarah Finer

### SEARCH study

- Ralph D'Agostino/Jasmin Divers/Dana Dabelea

- Cate Pihoker

### Chinese University of Hong Kong

- Ronald Ma, Ray Wan

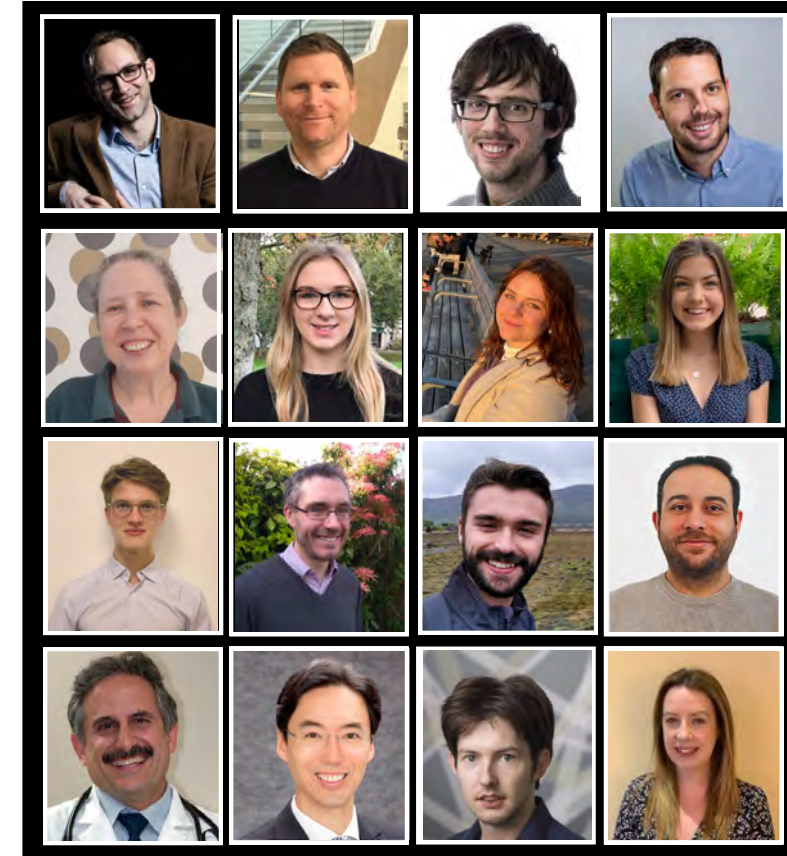
### Oxford

- Rachel Besser, John Todd

### Bristol

- Kathleen Gillespie, Anna Long

## Exeter "GRS" Team



[www.diabetesgenes.o](http://www.diabetesgenes.o)