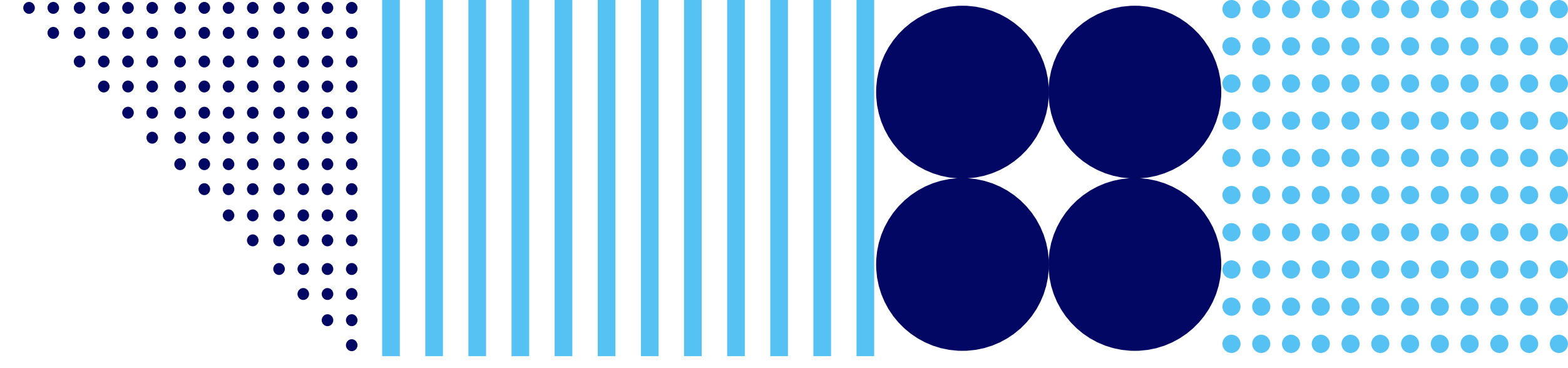




Appendices



Glossary



Helpful Acronyms

A

AAFP

American Academy of Family Physicians

ACCORDS

Adult and Child Consortium for Health Outcomes Research and Delivery Science

AHRQ

Agency for Healthcare Research and Quality

B

BCT

Boot Camp Translation

BIGHORN

Building InvestiGative practices for better Health Outcomes Research Network

C

CAC

Community Advisory Council

CAFP

Colorado Academy of Family Physicians

CaReNet

Colorado Research Network

CASCHEW

Convening Across Sectors for Colorado's Health Equity and Wellness

CCTSI

Colorado Clinical and Translational Sciences Institute

CFMR

Colorado Family Medicine Residencies

CGM

Continuous Glucose Monitoring

COCONet

Colorado Children's Outcomes Network

COPD

Chronic Obstructive Pulmonary Disease

D

DFM

Department of Family Medicine

E

EHR

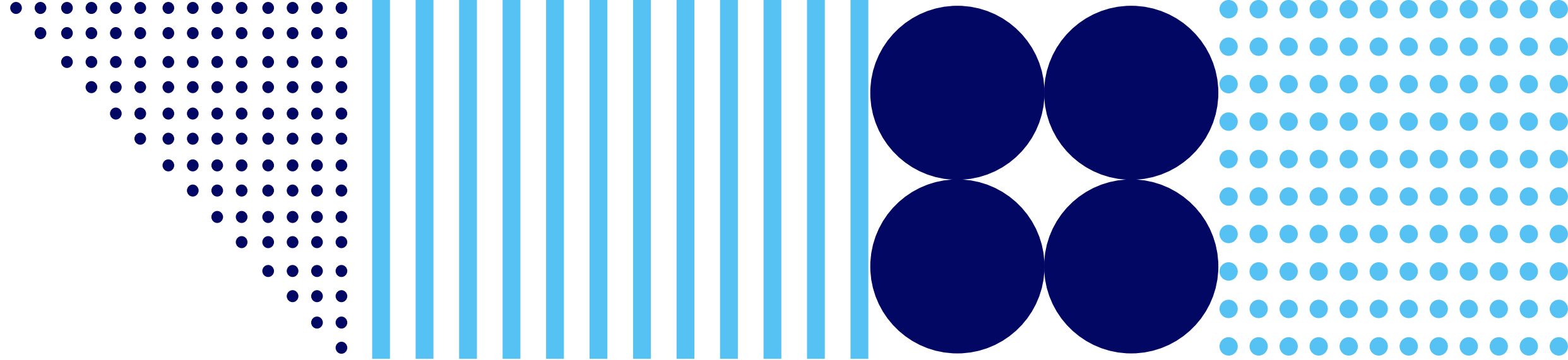
Electronic Health Record

F

FQHC

Federally Qualified Health Center

Glossary



H

HPRN

High Plains Research Network

M

Meta-LARC

Meta-Network Learning and Research Center

N

NAB

Network Advisory Board

NAPCRG

North American Primary Care Research Group

NCI

National Cancer Institute

NHLBI

National Heart, Lung, and Blood Institute

NIA

National Institute on Aging

NIH

National Institutes of Health

NIMH

National Institute of Mental Health

P

PBRN

Practice Based Research Network

PCORI

Patient-Centered Outcomes Research Institute

PEACHNet

Partners Engaged in Achieving Change in Health Network

PPRC

Patient Partners Research Council

R

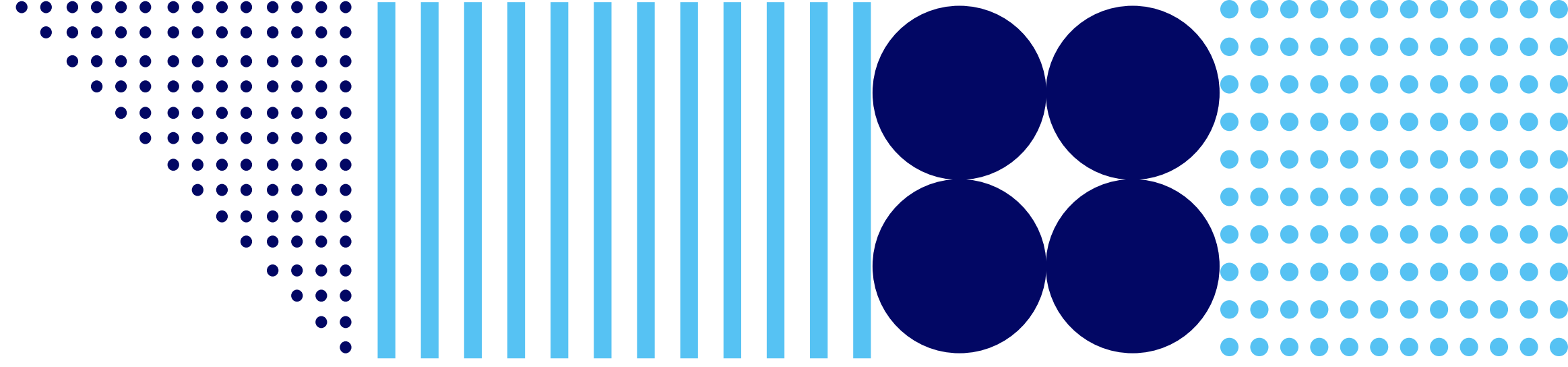
RAB

Research Advisory Board

S

SNOCAP

State Networks of Colorado Ambulatory Practices and Partners



Definitions

Active Project

An active project is any funded research project beginning, continuing, or concluding in a given year (for the purposes of this report, 2022).

Dissemination

Dissemination materials are public-facing outputs from research, usually publications in academic journals or presentations.

Network Director

Network Directors are appointed as described in SNOCAP's bylaws. All research conducted within a network is under the jurisdiction of the network's Director.

Practice-Based Research Network

Practice-based research networks link primary care clinicians with investigators to answer community-based healthcare questions and translate research findings into practice.¹

Presentation

A presentation is any abstract, poster, or presentation that (a) describes either a SNOCAP study or a study using SNOCAP resources and/or (b) is presented to an audience outside the investigator's institution (e.g., a national conference)

Social Determinants of Health (SDoH)

Social determinants of health are the conditions in the environments where people are born, live, learn, work, play, worship, and age that affect a wide range of health, functioning, and quality-of-life outcomes and risks.²

¹ Agency for Healthcare Research and Quality. PBRN Profiles. Department of Health and Human Services. <https://www.ahrq.gov/ncepcr/research-transform-primary-care/pbrn/profiles/index.html>

² Office of Disease Prevention and Health Promotion. Social Determinants of Health. <https://health.gov/healthypeople/priority-areas/social-determinants-health>

Projects Appendix

BIGHORN



Practice Facilitation to Enhance Implementation of a Pediatric Suicide Prevention Care Pathway

Principal Investigator: Nederveld, Andrea

Funded By: National Institute of Mental Health (NIMH)

Project Description: This project is a pilot test of practice-based education and screening intervention in primary care.

CaReNet



Extraordinary Partners in Dementia: UCHealth Capacity for Pragmatic Interventions (MemoryTech)

Principal Investigator: Lum, Hillary

Funded By: National Institute on Aging

Project Description: This project aims to understand Persons Living with Dementia and care partner perspectives on dementia health IT tools, focusing on underserved populations; to assess clinician preferences related to implementation and sustainability of dementia health IT tools in outpatient workflows; and to plan for embedded dementia health IT tool trials through building EHR capacity.

COCONet



Adapting Motivational Interviewing for Maternal Immunization (MI4MI)

Principal Investigator: O'Leary, Sean

Funded By: National Institutes of Health (NIH)

Project Description: A significant barrier to vaccine uptake is the lack of evidence to guide provider communication with patients who have concerns about vaccines. This novel study adapts motivational interviewing to the OB-GYN setting to provide information about how to improve provider communication and increase vaccine uptake among pregnant women.



Engaging Practices and Communities in the Development of Interventions to Promote HPV Vaccine Uptake

Principal Investigator: O'Leary, Sean

Funded By: National Institutes of Health (NIH)

Project Description: The overall goal of this project is to engage key stakeholders with providers and researchers to develop and evaluate the impact of a novel and innovative, community-engaged intervention strategy for improving the uptake of HPV vaccine in the primary care setting.

Projects Appendix



Evaluation of the Presumptively Initiating Vaccination and Optimizing Talk with Motivational Interviewing (PIVOT with MI) Intervention

Principal Investigator: O'Leary, Sean

Funded By: National Institutes of Health (NIH)

Project Description: This project aims to adapt motivational interviewing to the ob-gyn setting to provide information about how to improve provider communication and increase vaccine uptake among pregnant women.



The HPV 9-10 Trial: Early Initiation of HPV Vaccination

Principal Investigator: O'Leary, Sean

Funded By: National Institutes of Health (NIH)

Project Description: This cluster-randomized trial among >30 practices in Colorado and southern California seeks to assess the comparative effectiveness of recommending the HPV vaccine at ages 9-10 vs. ages 11-12 years for improving HPV vaccination uptake.

HPRN

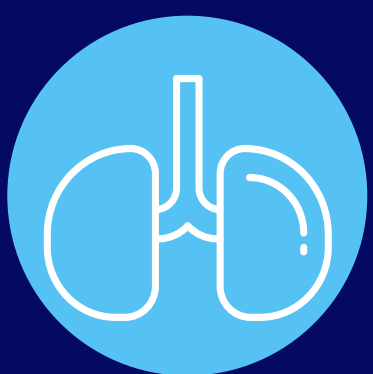


Adapting and Assessing the Feasibility of a Diabetes Self-Management Education and Support Telehealth Intervention for Rural Populations to Reduce Disparities in Diabetes Care

Principal Investigator: Oser, Tamara

Funded By: University of Utah, National Institute of Nursing Research (NINR), National Institutes of Health (NIH)

Project Description: Adapting one-day diabetes self-management and education program for use in rural eastern Colorado primary care. A partnership with University of Utah, HPRN's CAC used Boot Camp Translation to modify materials and program structure for rural communities and practices. Randomized control trial currently in the final analysis phase.



The CAPTURE Study: Validating a Unique COPD Screening Tool in Primary Care

Principal Investigator: Zittleman, Linda

Funded By: Cornell University Weill Medical College, National Heart, Lung, and Blood Institute (NHLBI), National Institutes of Health (NIH)

Project Description: This project is a partnership with the Cornell University. Randomized clinical trial testing a simple case finding tool to identify individuals with “clinically significant COPD,” those most likely to benefit from currently available therapies.



Colorado State Opioid Response 2.0

Principal Investigator: Knierim, Kyle

Funded By: State of Colorado Office of Behavioral Health

Project Description: This project is a partnership with the Practice Innovation Program Opioid Management program to offer the IT MATTTRs Practice Team Training, MAT Resources, and implementation support to practice teams around Colorado.

Projects Appendix



Tackling Loneliness with Communities (TLC)

Principal Investigator: Mullen, Rebecca

Funded By: Colorado Clinical and Translational Sciences Institute's Community Engagement Pilot Grant Awards

Project Description: Partnering with eastern Colorado communities to better understand loneliness and social connection.

PEACHNet



Campeones de la Salud (Health Champions)

Principal Investigator: Nederveld, Andrea

Funded By: Eagle County Department of Public Health and Environment/US Department of Health and Human Services

Project Description: Campeones de la Salud (CDLS) is a two-year initiative to improve health literacy and the accessibility of the health care system to Hispanic/Latinx patients and Spanish speakers in Eagle, Lake, Garfield, and Mesa counties.

Comparing Practice Implementation and Patient-Centered Outcomes of Standardized vs. Patient-Driven Diabetes Shared Medical Appointment

Principal Investigator: Kwan, Bethany and Waxmonsky, Jeanette

Funded By: Patient-Centered Outcomes Research Institute (PCORI)

Project Description: Shared medical appointments (SMAs) for diabetes have been shown to be an effective approach for helping patients manage their type-2 diabetes. This study sought to answer some questions around the best ways to deliver SMAs for primary care patients with diabetes - offering diabetes self-management education and support.

Recognizing Adults with Developmental Disabilities in Self-Advocacy Through Engagement (RADIATE)

Principal Investigator: Nederveld, Andrea

Funded By: Patient-Centered Outcomes Research Institute (PCORI)

Project Description: RADIATE is a project supported by a Eugene Washington Engagement Award intended to develop community coalitions and a research agenda focused on young adults with intellectual and developmental disabilities, health promotion and social needs.

SNOCAP

Home vs. Office Medication Effectiveness Research (HOMER)

Principal Investigator: Nease, Don and Zittleman, Linda

Funded By: Patient-Centered Outcomes Research Institute (PCORI)

Project Description: HOMER is a randomized, parallel group, three-arm pragmatic comparative effectiveness trial that compares standard Medication-assisted treatment (MAT) office induction with induction that occurs at home, either through telehealth or with office support.

Projects Appendix



Meta-LARC: Advance Care Planning (ACP) in Primary Care

Principal Investigator: Nowels, David (local PI)

Funded By: Patient-Centered Outcomes Research Institute (PCORI)

Project Description: Meta-LARC ACP is a cluster-randomized trial that compares team-based versus primary care clinician-focused advance care planning in practice-based research networks.



Innovation Support Project (ISP)

Principal Investigator: Dickinson, Perry

Funded By: University of Colorado Anschutz Medical School

Project Description: To support practices in improving the quality of care while enhancing the opportunity to succeed in new payment models, including Medicaid's Alternative Payment Model



The SHARE Approach: A Model for Shared Decision Making

Principal Investigator: Sherer, Laura

Funded By: Agency for Healthcare Research and Quality (AHRQ)

Project Description: The goal of this project is to evaluate the implementation and effectiveness of the SHARE Approach for improving clinician shared decision making (SDM). The three primary objectives of this project are: update SHARE Approach curriculum and tools to have updated references and relevance for SDM in the context of problem solving and to shorten the curriculum to facilitate implementation; how the SHARE Approach is implemented in four cardiology and eight primary care clinics across the State of Colorado; assess effectiveness of the SHARE Approach in improving clinicians' use of SDM with patients facing treatment choices and with complex issues involving both short- and long-term problem solving.



Patient Perception of Primary Care Practice Burnout Study

Principal Investigator: Nease, Don

Funded By: SNOCAP Internal Funding

Project Description: SNOCAP was tasked by patient, practice, and community partners to explore the prevalence of clinic staff burnout. Burnout is being described in this project as "physical or mental collapse caused by overwork or stress." The aim of this study is to examine the patient view of burnout at the clinic where they receive care, parntering patient views with a survey of clinic team members themselves.

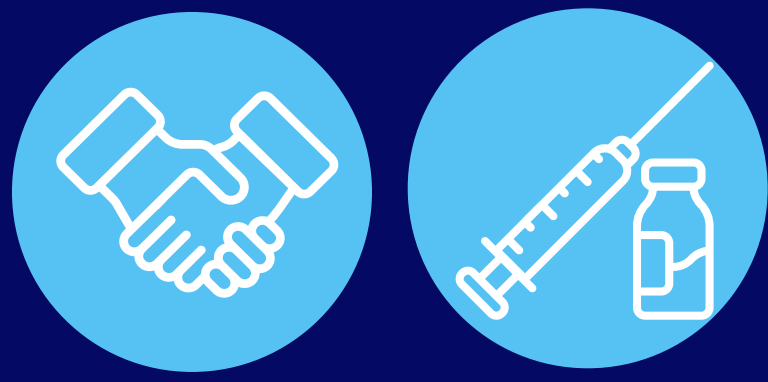
Meta-LARC: A Community-Based Assessment of Skin Care, Allergies, and Eczema (CASCADE)

Principal Investigator: Nease, Don

Funded By: Oregon Health and Science University

Project Description: CASCADE is a pragmatic community-based randomized controlled trial investigating whether daily full-body emollient therapy starting in the first two months of live prevents atopic dermatitis (AD) and analyzes whether a family history of allergic disease and key early life exposures modify the preventive effect of emollient therapy on AD.

Projects Appendix



COVER Colorado

Principal Investigator: O'Leary, Sean

Funded By: Colorado Department of Public Health and Environment (CDPHE)

Project Description: COVER Colorado seeks to reduce disparities in COVID-19 vaccine uptake among adolescents and young adults in rural communities using rapid BCTs to create locally relevant campaigns.

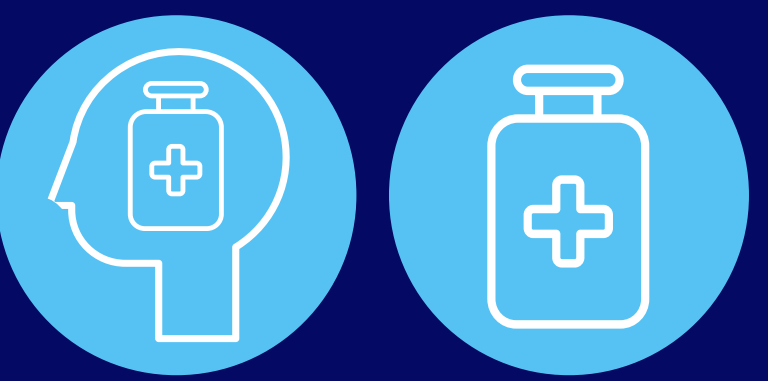


RADVax: Using Boot Camp Translation to Address Rural Disparities in Adolescent Vaccination

Principal Investigator: O'Leary, Sean and Dempsey, Amanda

Funded By: Centers for Disease Control and Prevention and University of Colorado

Project Description: This project sought to understand the reasons underlying this disparity, and use a community-engaged research process, called Boot Camp Translation (BCT), to design and test community-relevant strategies to mitigate this disparity among rural Colorado adolescents.

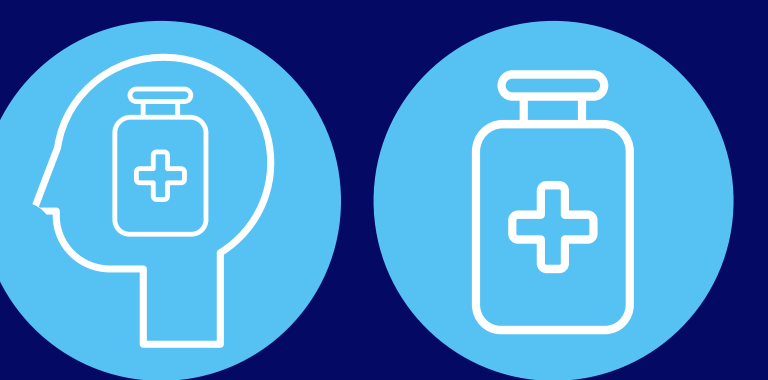


Facilitating Alcohol Screening and Treatment (FAST)

Principal Investigator: Dickinson, Perry

Funded By: Agency for Healthcare Research and Quality

Project Description: Cluster randomized trial to examine effectiveness and relative value of two approaches to supporting primary care practices to improve their identification and treatment of unhealthy alcohol use among adults, including screening, brief intervention, medication assisted therapy, and referral to treatment.



Screening, Brief Intervention, and Referral to Treatment (SBIRT) Implementation

Principal Investigator: Zittleman, Linda

Funded By: Peer Assistance/Substance Abuse and Mental Health Services Administration (SAMHSA)

Project Description: This project aims to implement screening and brief intervention for clinics in eastern Colorado.



Changing Our Mental and Emotional Trajectory (COMET)

Principal Investigator: Zittleman, Linda

Funded By: SNOCAP Internal Funding

Project Description: This project is a very upstream approach to discussing mental and behavioral health. Offered as a training program with evaluation component.

Projects Appendix



COISC3: Pragmatic Approaches to Assess and Enhance Value of Cancer Prevention and Control in Rural Primary Care

Principal Investigator: Glasgow, Russell

Funded By: National Institutes of Health (NIH), National Cancer Institute (NCI)

Project Description: The COISC3 is a P50 Cancer Center exploring new approaches using implementation science for cancer prevention and control. PEACHnet practices participated in pilot programs, a needs assessment and an administrative supplement exploring cancer screening and social needs.



Bionic Pancreas System

Principal Investigator: Oser, Tamara

Funded By: Helmsley Charitable Trust

Project Description: The goal of this study is to assess whether a fully automated closed-loop bionic pancreas system will achieve similar outcomes (average glucose, time in range, time in hypoglycemia) when deployed through community-based primary care versus academic endocrinologists, and when delivered in-person versus telehealth.

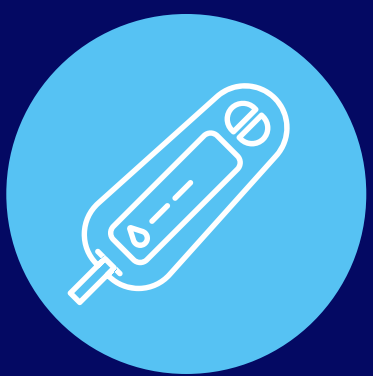


Colorado Community Engagement Alliance Against COVID-19 Disparities (CO-CEAL)

Principal Investigator: Nease, Don

Funded By: National Institutes of Health (NIH), Westat

Project Description: The mission of CO-CEAL is to provide trustworthy information through active community engagement and outreach to the people hardest-hit by the pandemic while building long-lasting community partnerships to improve diversity and inclusion in COVID-19 research for new treatments, vaccines and other virus prevention practices.



Invested in Diabetes

Principal Investigator: Kwan, Bethany and Waxmonsky, Jeanette

Funded By: Patient-Centered Outcomes Research Network (PCORI)

Project Description: Shared Medical Appointments with and without multidisciplinary care teams and patient topic choice for improving patient-centered and clinical outcomes related to diabetes. COVID has allowed the team to consider different ways of convening both in-person and virtually.

Publications Appendix

BIGHORN

"We've Really Built Something": Why Family Medicine Program Directors Stay in Their Positions - A Qualitative Study

Authors: Douglas H. Fernald, Christina M. Hester, Steven R. Brown

Journal Info: *Journal of Graduate Medical Education* 14.4 (2022): 451-457

COCONet

MomsTalkShots, tailored educational app, improves vaccine attitudes: A Randomized Controlled Trial

Authors: Matthew Z. Dudley, Saad B. Omer, Sean T. O'Leary, Rupali J. Limaye, Mallory K. Ellingson, Christine I. Spina, Sarah E. Brewer, Robert A. Bednarczyk, Allison T. Chamberlain, Fauzia Malik, Paula M. Frew, Cathy Church-Balin, Laura E. Riley, Kevin A. Ault, Walter A. Orenstein, Neal A. Halsey, and Daniel A. Salmon

Journal Info: *BMC Public Health* 22.1 (2022): 1-12

Motivational Interviewing for Maternal Immunizations: Intervention Development

Authors: Jessica R. Cataldi, Mary E. Fisher, Sarah E. Brewer, Christine I. Spina, Russell E. Glasgow, Cathryn Perriera, Fiona Cochran, and Sean T. O'Leary

Journal Info: *Vaccine* 12.40 (2022): 7604-7612

Multi-tiered Intervention to Increase Maternal Immunization Coverage: A Randomized, Controlled Trial

Authors: Saad B. Omer, Sean T. O'Leary, Robert A. Bednarczyk, Mallory K. Ellingson, Christine I. Spina, Matthew Z. Dudley, Allison T. Chamberlain, Rupali J. Limaye, Sarah E. Brewer, Paula M. Frew, Fauzia A. Malik, Walter Orenstein, Neal Halsey, Kevin Ault, Daneil A. Salmon

Journal Info: *Vaccine* 40.34 (2022): 4955-4963

Parent attitudes towards childhood vaccines after the onset of SARS-CoV-2 in the United States

Authors: Douglas J. Open, Anna Furniss, Chuan Zhou, John D. Rice, Heather Spielvogel, Christine Spina, Cathryn Perreira, Jessia Giang, Nicolas Dundas, Amanda Dempsey, Barbara Pahud, Jeffrey Robinson, Sean T. O'Leary

Journal Info: *Academic Pediatrics* 22.8 (2022): 1407-1413

HPRN

A telehealth diabetes intervention for rural populations: Protocol for a randomized controlled trial

Authors: Michelle L. Litchman, Bethany M. Kwan, Linda Zittleman, Juliana Simonetti, Eli Iacob, Kristen Curcija, Julie Neuberger, Gwen Latendress, Tamara K. Oser

Journal Info: *JMIR Research Protocols* 11.6 (2022): e34255

Publications Appendix

Improving Rates of Vitamin D Supplementation in Somali Immigrant Infants: A Prospective Interventional Pilot Trial

Authors: Jeffrey S. Cook, Allison Kimball, Linda Zittleman, Mark K. Huntington
Journal Info: *Population* 12 (2022): 14

Informing a Randomized Control Trial in Rural Populations: Adaptation of a Diabetes Self-Management Education and Support Intervention

Authors: Tamara K. Oser, Linda Zittleman, Kristen Curcija, Bethany Kwan, Shawnecca Burke, Sindy Gonzalez, Kelsey Huss, Marilee Johnson, Norah Sanchez, Julie Neuberger, Eli Iacob, Juliana Simonette, Michelle Litchman
Journal Info: *JMIR Diabetes* 7.2 (2022): e35664



A study examining the usefulness of a new measure of research engagement

Authors: Deborah J. Bowen, Nicole Ackermann, Vetta Saunders Thompson, Andrea Nederveld, Melody Goodman
Journal Info: *Journal of General Internal Medicine* 37.Suppl 1 (2022): 50-56

Growing PEACHNet: Building a Practice-Based Research Network in Western Colorado

Authors: Andrea L. Nederveld, Kelsey Fife Duarte, Elena T. Broaddus-Shea
Journal Info: *Journal of the American Board of Family Medicine* 35.1 (2022): 115-123

IMAGINE: a trial of messaging strategies for social needs screening and referral

Authors: Andrea L. Nederveld, Kelsey Fife Duarte, John D. Rice, Ashlyn Richie, Elena T. Broaddus-Shea
Journal Info: *American Journal of Preventative Medicine* 63.3 (2022): S164-S172

Implementing health-related social needs screening in western Colorado primary care practices: Qualitative research to inform improved communication with patients

Authors: Elena T. Broaddus-Shea, Kelsey Fife Duarte, Kathryn Jantz, Jenna Reno, Lauri Connelly, Andrea Nederveld
Journal Info: *Health & Social Care in the Community* 30.5 (2022): e3075-e3085

Methods for Capturing and Analyzing Adaptations: Implications for Implementation Research

Authors: Jodi S. Holtrop, Dennis Gurfinkel, Andrea L. Nederveld, Phoutdavone Phimphasone-Brady, Patrick Hosokawa, Claude Robinson, Jeanette A. Waxmonsky, Bethany M. Kwan
Journal Info: *Implementation Science* 17 (2022): 51.

Multistakeholder perspectives on data sharing to address patient food insecurity

Authors: Andrea L. Nederveld, Jodi Holtrop, Kelsey Fife Duarte, Macharnie Shalecki, Elena T. Broaddus-Shea
Journal Info: *Journal of the American Board of Family Medicine* 35.1 (2022): 85-95

Publications Appendix

SNOCAP

Does a Rural Community-Based Intervention Improve Knowledge and Attitudes of Opioid Use Disorder and Medication-Assisted Treatment? A Report From the IT MATTTRs Study

Authors: Kristen Curcija, Linda Zittleman, Mary Fisher, Donald E. Nease Jr., L. Miriam Dickinson, Dionisia de la Cerda, Christin Sutter, Jen Ancona, James Rank, John M. Westfall
Journal Info: *Journal of Rural Health* 38.1 (2022): 120-128

Increasing capacity for treatment of opioid use disorder in rural primary care practices

Authors: Linda Zittleman, Kristen Curcija, Donald E. Nease, Mary Fisher, L. Miriam Dickinson, John F. Thomas, Ashley Espinoza, Christin Sutter, Jennifer Ancona, Jodi S. Holtrop, John M. Westfall
Journal Info: *Annals of Family Medicine* 20.1 (2022): 18.23

Methods for capturing and analyzing adaptations: implications for implementation research

Authors: Jodi S. Holtrop, Dennis Gurfinkel, Andrea Nederveld, Phoutdavone Phimphasone-Brady, Patrick Hosokawa, Claude Robinson, Jeanette A. Waxmonsky, Bethany M. Kwan
Journal Info: *Implementation Science* 17.1 (2022): 1-16

The balance between serving the community and the reality of treating opioid use disorder in rural primary care practices

Authors: Jodi S. Holtrop, Rebecca Mullen, Kristen Curcija, John M. Westfall, Linda Zittleman
Journal Info: *Journal of Health Care for the Poor and Underserved* 33.1 (2022): 253-267

The psychosocial needs of patients participating in diabetes shared medical appointments

Authors: Andrea L. Nederveld, Dennis Gurfinkel, Patrick Hosokawa, R. Mark Gritz, L. Miriam Dickinson, Phoutdavone Phimphasone-Brady, Jeanette A. Waxmonsky, Bethany M. Kwan
Journal Info: *Journal of the American Board of Family Medicine* 35.6 (2022): 1103-1114

The Watershed Of Practice-Based Research: Lessons And Opportunities From The COVID Pandemic

Authors: Katrina E. Donahue, Donna Manca, Jacqueline R. Halladay, Jinping Xu, Rowena J. Dolor, Hazel Tapp, Elexia Wright, Michelle L. Hernandez, Jack Westfall, Donald E. Nease
Journal Info: *Health Affairs* January 20, 2022

Presentations Appendix

AAFP Residency Leadership Summit

*Kansas City, MO
March 2022*

Why Do Program Directors Leave Our Positions? And Why Do We Stay?

Presenters: Doug Fernald, Christina M. Hester, Steven R. Brown

Type of Presentation: Oral Presentation

Pediatric American Societies (PAS) Meeting

*Denver, CO
April 2022*

Motivational Interviewing for Maternal Immunizations: Intervention Development

Presenters: Jessica R. Cataldi, Mary E. Fisher, Sarah E. Brewer, Christine I. Spina, Cathryn Perreira, Fiona Cochran, Sean T. O'Leary

Type of Presentation: Poster Presentation

AcademyHealth Annual Research Meeting

*Washington, D.C.
June 2022*

Imagine: A Pragmatic Trial of Patient-Centered Communication Strategies for Health-Related Social Needs Screening and Referral in Primary Care

Presenters: Elena T. Broaddus-Shea, Kelsey Duarte, John Rice, Ashlyn Richie, Amy Huebschmann, Andrea L. Nederveld

Type of Presentation: Poster Presentation

American Diabetes Association's 82nd Scientific Sessions

*New Orleans, LA
June 2022*

Continuous Glucose Monitoring in Primary Care: Explaining Characteristics Associated with CGM Prescription

Presenters: Tamara Oser, Tristen Hall, Meredith K. Warman, Melissa K. Filippi, Brian Manning, Elisabeth Callen, L. Miriam Dickinson, Leann C. Michaels, Donald E. Nease, Sean Oser

Type of Presentation: Poster Presentation

Qualitative findings of a culturally-tailored rural diabetes one-day DSMES program in eastern Colorado

Presenters: Kristen Curcija, Tamara Oser, Michelle L. Litchman, Bethany Kwan, Linda K. Zittleman, Julie Neuberger, Christin Sutter, Eli Iacob, Sindy J. Gonzalez, Gwen Latendresse

Type of Presentation: Poster Presentation

Presentations Appendix

NAPCRG Practice-Based Research Conference

Bethesda, MD
June 2022

Building on the Six Building Blocks: Supporting Colorado Safety-Net Clinics to Implement Safe Opioid Management

Presenter: Douglas Fernald

Type of Presentation: Poster Presentation

Growing and Adapting PBRN Research During a Pandemic: A CASFM PBRN Workshop

Presenters: Douglas Fernald, Hazel Tapp, Kimberly Fulda, Carissa van den Berk-Clark

Type of Presentation: Oral Presentation

IMAGINE: A Practice-Based Trial of Communication Strategies for Social Needs Screening and Referral

Presenters: Elena Broaddus, Amy Huebschmann, Ashlyn Richie, Andrea Nederveld, John Rice

Type of Presentation: Oral Presentation

Patient Perspectives of Burnout in Primary Care: Results of a Colorado Card Study

Presenters: Mary Fisher, Elexia Wright, Donald Nease

Type of Presentation: Oral Presentation

Scaling Up Field Notes for Research: What We Learned About Using Field Notes in Multiple Practice-Based Interventions

Presenters: Douglas Fernald, Tristen Hall, Perry Dickinson

Type of Presentation: Poster Presentation

The SNOCAP COVID-19 Crisis Response: Our COVID-19 Practice Outreach, Partnership, and Quick Response Journey Two Years Later

Presenters: Mary Fisher, Elexia Wright, Donald Nease

Type of Presentation: Oral Presentation

Suicide Prevention - Unified Research: Developing Capacity for Community-Engaged Suicide Prevention Research in Western Colorado

Presenters: Andrea Nederveld, Elena Broaddus, Meghan Francone, Erica Kitzman, Mason Hohstadt, Kellyn Ender, Elizabeth Bell

Type of Presentation: Oral Presentation

Tackling Loneliness in Communities (TLC) through Community-Generated Translational Research Questions

Presenters: Rebecca Mullen, Maret Felzien, Kristen Curcija, Linda Zittleman

Type of Presentation: Poster Presentation

Presentations Appendix

Association of Diabetes Care & Education Specialists (ADCES) Annual Conference

*Baltimore, MD
August 2022*

Rural-D1D: A Hybrid Telehealth Intervention to Reach Multiple Primary Care Practices and Patients

Presenters: Michelle L. Litchman, Tamara Oser, Juliana Simonetti, Linda Zittleman, Sindy Gonzalez, Kristen Curcija, Julie Neuberger, Gwen Latendresse, Eli Iacob

Type of Presentation: Poster Presentation

Public Health in the Rockies Conference

*Keystone, CO
September 2022*

Changing Our Mental and Emotional Trajectory to Improve Mental Health in Rural Communities: the COMET Program

Presenters: Kristen Curcija, Christin Sutter, Linda Zittleman, John Westfall, Joseph Carrica, Tamara Oser, Maret Felzien

Type of Presentation: Oral Presentation

IMAGINE: A Pragmatic Trial of Patient-Centered Communication Strategies for Health-Related Social Needs Screening and Referral in Primary Care

Presenters: Elena Broaddus, John Rice, Ashlyn Richie, Amy Huebschmann, Andrea Nederveld

Type of Presentation: Poster Presentation

"What Business is it of Yours?": Patient Recommendations for Communication about Health-Related Social Needs Screening in Western Colorado Primary Care Practices

Presenters: Elena Broaddus, Kelsey Fife Duarte, Kathryn Jantz, Jenna Reno, Lauri Connelly, Amy Huebschmann, Andrea Nederveld

Type of Presentation: Oral Presentation

NAPCRG 50th Annual Meeting

*Phoenix, AZ
November 2022*

Changing Our Mental and Emotional Trajectory to Improve Mental Health in Rural Communities: the COMET Program

Presenters: Kristen Curcija, Chris Frakes, John Westfall, Christin Sutter, Tamara Oser, Maranda Miller, Linda Zittleman, Maret Felzien, Joseph Carrica

Type of Presentation: Oral Presentation

IMAGINE: A Practice-Based Trial of Communication Strategies for Social Needs Screening and Referral

Presenters: Andrea Nederveld, Elena Broaddus, John Rice, Ashlyn Richie, Amy Huebschmann

Type of Presentation: Oral Presentation

Presentations Appendix

NAPCRG Diamonds: Patient Clinician Dyads

Presenters: Kenneth Dailey, Marcia Dailey, Donald Nease

Type of Presentation: Oral Presentation

Patient Initiation of Treatment for Opioid Use Disorder and Referral to a Randomized Study: Lessons from the HOMER Study

Presenters: Douglas Fernald, Tristen Hall, Cory Lutgen, Jillian Alai, Sindy Gonzalez, Benjamin Sofie, Jennifer Ancona, Maret Felzien, Donald Nease

Type of Presentation: Oral Presentation

The PRimary care Education and Practice Adoption Resource Evaluation for Continuous Glucose Monitoring (PREPARE 4 CGM) Study

Presenters: Kristen Crispe, Dionisia de la Cerda, Perry Dickinson, Doug Fernald, R. Mark Gritz, Tristen Hall, Bonnie Jortberg, Stephanie Kirchner, Sean Oser, Tamara Oser

Type of Presentation: Poster Presentation

Reaching Underrepresented Minority Populations in Clinical Research

Presenters: Tamara Oser, Sindy Gonzalez, Michelle Litchman, Kristen Curcija, Christin Sutter, Eli Iacob, Linda Zittleman, Norah Sanchez, Minnie Rodriguez, Sergio Sanchez

Type of Presentation: Poster Presentation

Research in the Time of Cholera (or COVID-19): Lessons from the Field and Implications for Future Research

Presenters: Linda Zittleman, Joseph LeMaster, John Westfall, Douglas Fernald, Benjamin Sofie, L. Miriam Dickinson, Bethany Kwan, Tristen Hall, Donald Nease, Brian Manning, Camille Hochheimer, Cory Lutgen, Melanie Murphy

Type of Presentation: Oral Presentation

Rural Diabetes One Day: A Pilot Clinical Trial

Presenters: Tamara Oser, Bethany Kwan, Eli Iacob, Michelle Litchman, Kristen Curcija, Sindy Gonzalez, Christin Sutter, Julie Neuberger, Linda Zittleman

Type of Presentation: Poster Presentation

Strategies to Cope with Loneliness in Rural Communities: The Tackling Loneliness with Communities Pilot Project

Presenters: Rebecca Mullen, Tamara Oser, Kristen Curcija, Maret Felzien, Linda Zittleman, Sandi Garcia, Ashley Espinoza

Type of Presentation: Poster Presentation

Suicide Prevention - Unified Research: Developing Capacity for Community-Engaged Suicide Prevention Research in Western Colorado

Presenters: Andrea Nederveld, Elena Broaddus, Meghan Francone

Type of Presentation: Oral Presentation

Presentations Appendix

Gerontological Society of America Annual Scientific Meeting

*Indianapolis, IN
November 2022*

Engaging a Diverse Patient and Care Partner Council to Refine Dementia Care Digital Health Tools

Presenters: Jessica Cassidy, Mary Fisher, Evelyn Romeo, Samantha Holden, Melanie Caffrey, Donald Nease, Hillary Lum

Type of Presentation: Poster Presentation

Excursions into Health Care Systems to Help Informal Caregivers Manage Dementia

Presenters: Richard Fortinsky, Christopher Callahan, Hillary Lum, Quincy Samus

Type of Presentation: Oral Presentation

Team Conference for Hospice and Palliative Care

*Virtual Conference
November 2022*

Engaging a Diverse Patient and Care Partner Council to Refine Dementia Care Digital Health Tools

Presenters: Jessica Cassidy, Hillary Lum

Type of Presentation: Poster Presentation