

# **SNOCAP ANNUAL REPORT**



# **SNOCAP**

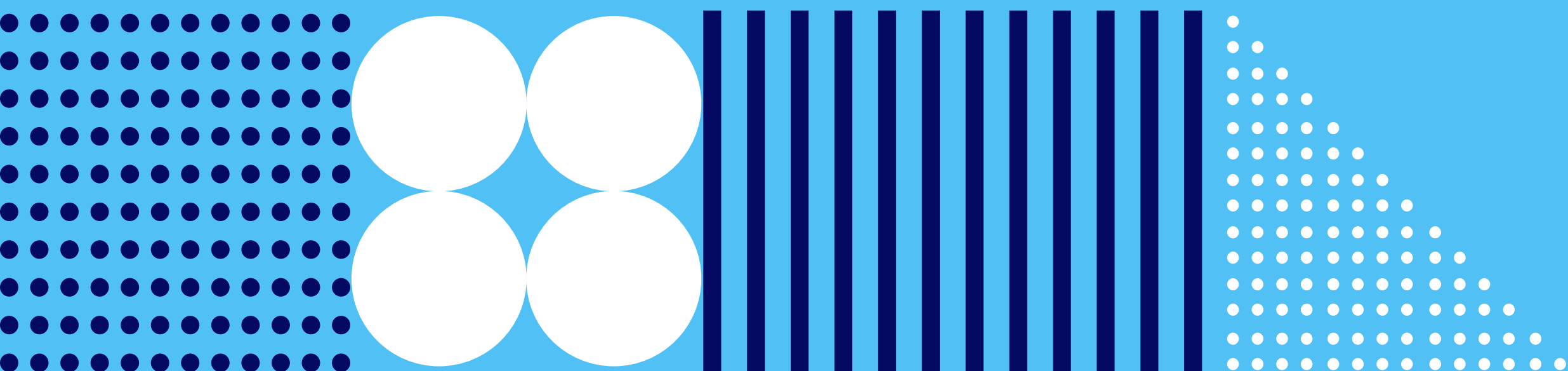
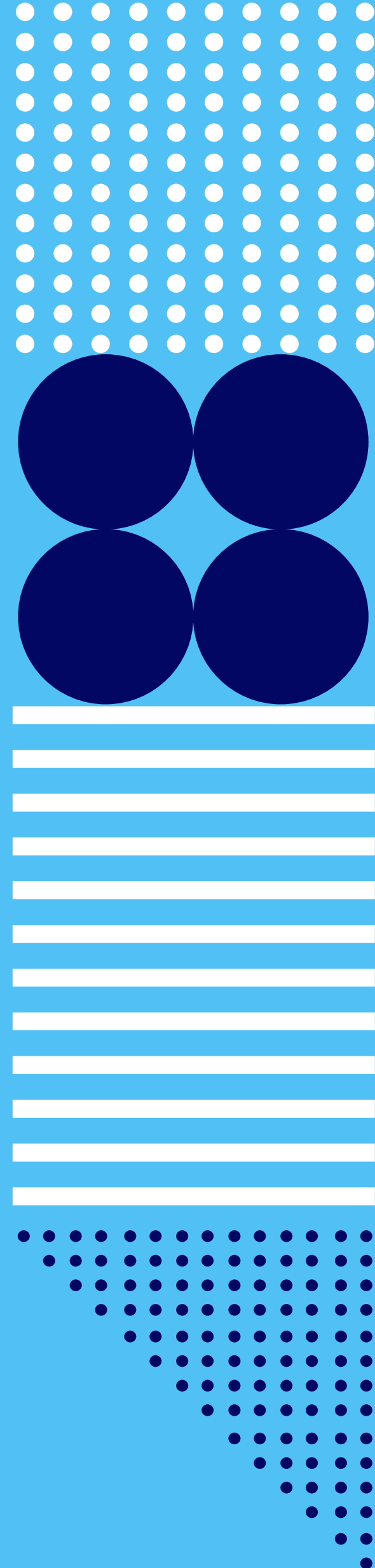
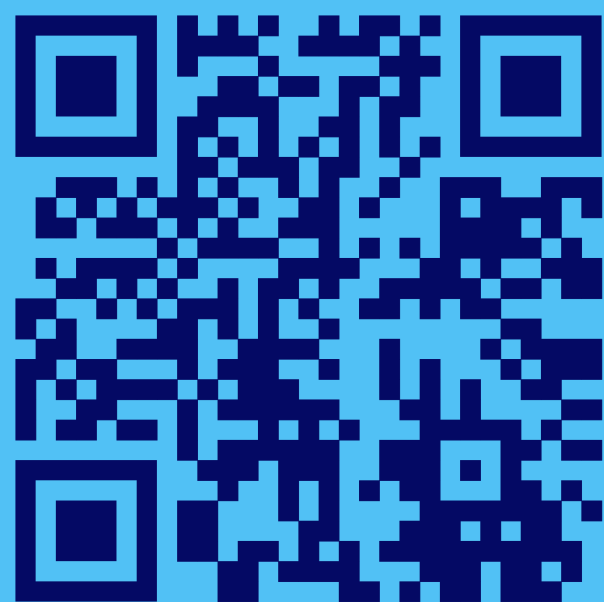
**State Networks of Colorado Ambulatory Practices & Partners**

# **2022**

# Table of Contents

Letter from Leadership.....	1
What is SNOCAP?.....	2
Network Structure.....	3
Year at a Glance.....	4
Projects and Priorities Addressed.....	5
BIGHORN.....	6
CaReNet.....	7
COCONet.....	8
HPRN.....	9
PEACHnet.....	10
SNOCAP Projects.....	11
Partners in this Work.....	12

Scan to view this report's appendices  
and glossary on our website





# Letter from our Director

Dear SNOCAP friends and colleagues,

We are pleased to present this 2022 Annual Report to you. In it you will find news of our activities this past year which included lots of project work and a return to meeting and presenting our work in person at conferences and gathering at the Convening Across Sectors for Colorado's Health Equity and Wellness (CASCHEW) conference in October.

It's been a year when we've begun to see the light at the end of the tunnel with the COVID-19 pandemic, but we know that the impacts are still being acutely felt in our partner practices and communities. Reflective of this, the priority setting session at the CASCHEW conference highlighted the importance of work on Social Determinants of Health and overall Mental Health issues, both of which were negatively impacted during the pandemic.

We've tried to make the report a bit more succinct this year, with embedded links to places on our website where you can go for more information. Please take advantage of these!

Lastly, this report would not exist without the efforts of Mary Fisher, SNOCAP Associate Director and Allison Sands, SNOCAP Administrative Coordinator. They have done an amazing job of pulling these pages together. Please express your thanks to them when you have a chance.

Thank you for your ongoing interest and support of our work,

Don Nease



None of this would be possible without the generous support from the University of Colorado's Department of Family Medicine, ACCORDS, CCTSI, and our many other partners.



Colorado Clinical and Translational Sciences Institute (CCTSI)

UNIVERSITY OF COLORADO DENVER | ANSCHUTZ MEDICAL CAMPUS



ACCORDS

ADULT AND CHILD CONSORTIUM FOR HEALTH OUTCOMES  
RESEARCH AND DELIVERY SCIENCE

UNIVERSITY OF COLORADO | CHILDREN'S HOSPITAL | COLORADO



# What is SNOCAP?

SNOCAP (State Networks of Colorado Ambulatory Practices and Partners) is the collaborative affiliation of practice-based research networks (PBRNs) in Colorado that joined together around 2004 to improve communication, facilitate joint research projects, and share research staff and resources.

Together, we are  
leading the charge for  
healthier communities

A decorative graphic on the left side of the page, consisting of a series of blue dots forming a triangular shape, followed by horizontal blue lines, and then four solid blue circles arranged in a 2x2 grid.

# SNOCAP

State Networks of Colorado Ambulatory Practices & Partners



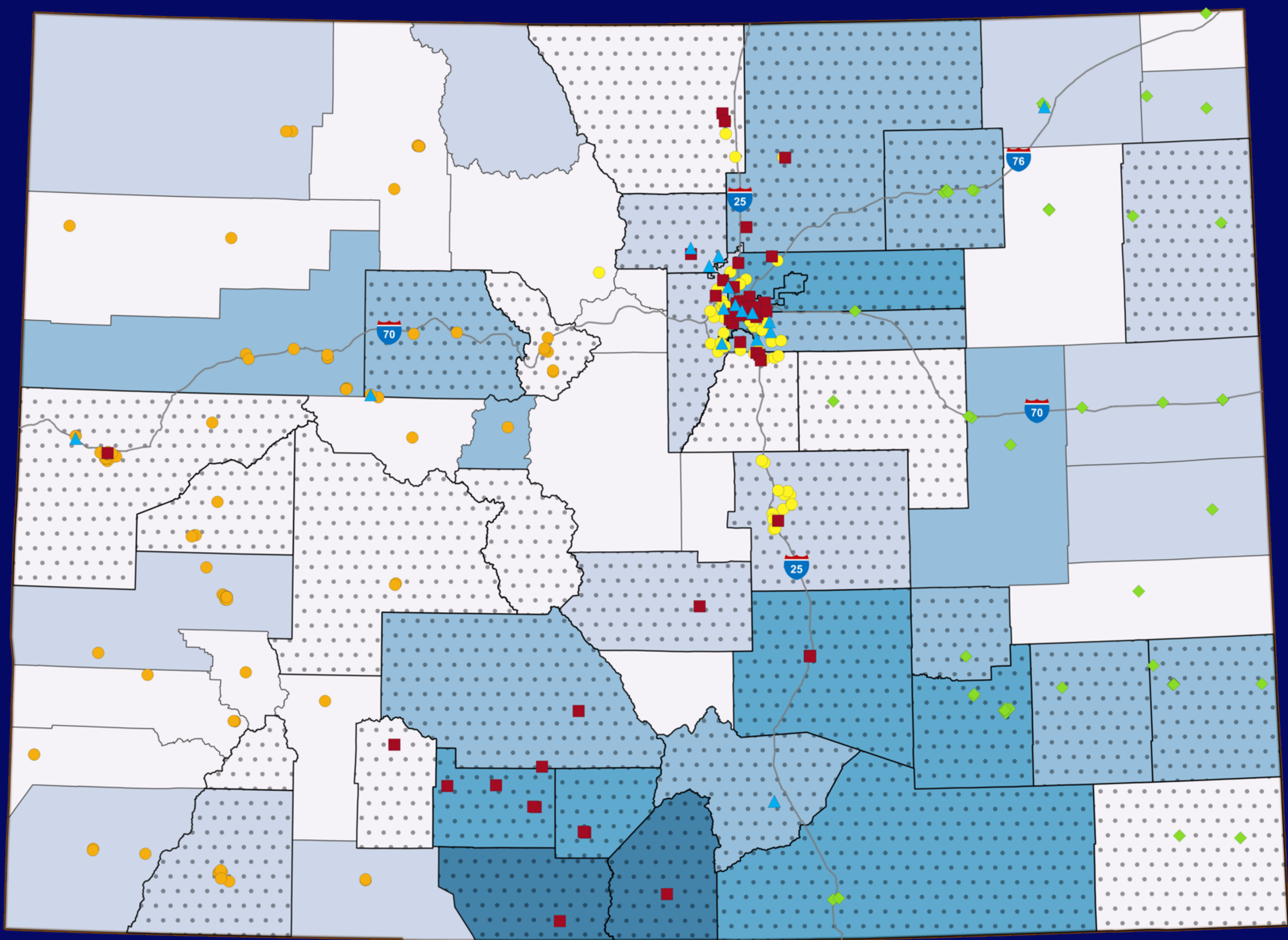
# Network Structure

SNOCAP currently includes five separate practice-based research networks (PBRNs), each with their own staff and unique structures. Because of the variation in size, location, populations served, and organizational structures, research conducted across SNOCAP is more generalizable than that conducted in more uniform PBRNs elsewhere.



**282** SNOCAP-affiliated practices across Colorado

SNOCAP's practices are...  
**51%** rural/frontier  
**49%** urban/suburban



<b>CCTSI Community Engagement &amp; Health Equity Community Research Liaison activity</b>	<b>% People of Color</b>	<b>SNOCAP Practices</b>
	7 - 19%	▲ BIGHORN
	19 - 31%	■ CaReNet
	31 - 43%	● COCONet
	43 - 55%	◆ HPRN
	55 - 67%	● PEACHnet



# Year at a Glance

**29**  
active  
projects

**24**  
funding  
sources

**16**  
priority  
topics

**31**  
presentations

**19**  
publications

## Self Study and External Review

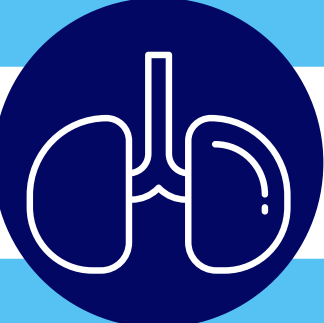
In 2022, SNOCAP began an external review process involving each network and SNOCAP overall preparing self-study reports, a site visit by our external reviewers in October, and a final report that was shared near the end of the year. As of early 2023, we are working through a process of digesting the report and listening to our stakeholders to decide next steps. Overall, the reviewers acknowledged our past success and leadership, but encouraged us to re-imagine how we do our work in several areas. We are excited to move this process forward.



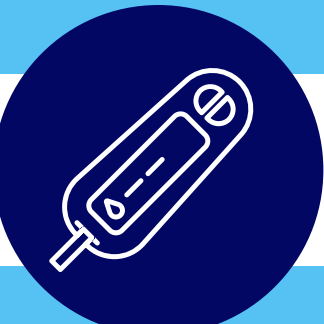
# Projects and Priorities Addressed

Below are topics from SNOCAP priority setting session in recent years. Look for these icons throughout the report to find where these topics are being addressed within our current work.

## Health Topics



COPD



Diabetes



Dementia



Elderly Health



Alcohol & Drug Misuse Interventions



Substance Abuse/Mental Health Overlap



Pediatric Mental Health

## Social Topics



Social Determinants of Health



Health Equity



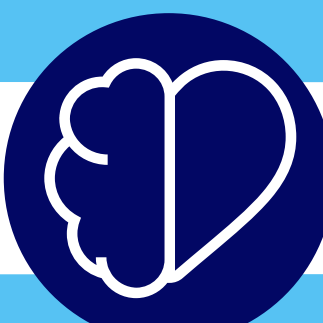
Immunization Delivery, Hesitancy, and Refusal



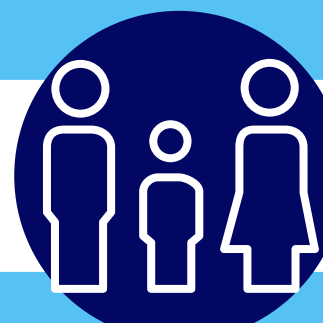
Reproductive Health & Justice



Social Isolation & Loneliness



Mental Healthcare Access and Community Resources



Affordable/High Quality Childcare

## Practice Resources



Workforce Burnout and Staffing



Implementation & Patient Resources

Priority items marked with a star were identified at SNOCAP's priority setting session at CASCHEW in October 2022.



The complexity and overlap between these priority topics reflect the rich concerns and needs of our practices and communities.





# Building Investigative practices for better Health Outcomes Research Network

Director: Doug Fernald [doug.fernalld@cuanschutz.edu](mailto:doug.fernalld@cuanschutz.edu)

BIGHORN is a network of private primary care practices in Colorado comprised of practices representative of busy community practices in both urban and rural areas across the state. BIGHORN's mission is to transform a network of private practices into a community of reflective, investigative practices and their patients, thereby enhancing the quality, safety, efficiency, and accessibility of primary care health through practice-based research. BIGHORN has completed studies on patient safety, underinsurance, direct-to-consumer advertising, health information technology, and chronic pain with funding from the Centers for Disease Control and Prevention, Agency for Healthcare Research and Quality (AHRQ), and National Institute of Diabetes and Digestive and Kidney Diseases (NIDDK).

## Active Projects



### Practice Facilitation to Enhance Implementation of a Pediatric Suicide Prevention Care Pathway

**Funded by:** National Institute of Mental Health (NIMH)

*This project is a pilot test of practice-based education and screening intervention in primary care.*

## Dissemination

### "We've Really Built Something": Why Family Medicine Program Directors Stay in Their Positions - A Qualitative Study

Published in the *Journal of Graduate Medical Education*, August 2022.

### Growing and Adapting PBRN Research During a Pandemic: A CASFM PBRN Workshop

Presented at NAPCRG Practice-Based Research Network Conference in Bethesda, MD, June 2022.

### Building on the Six Building Blocks: Supporting Colorado Safety-Net Clinics to Implement Safe Opioid Management

Presented at NAPCRG Practice-Based Research Network Conference in Bethesda, MD, June 2022.

### Scaling Up Field Notes for Research: What We Learned About Using Field Notes in Multiple Practice-Based Interventions

Presented at NAPCRG Practice-Based Research Network Conference in Bethesda, MD, June 2022.

### Why Do Program Directors Leave Our Positions? And Why Do We Stay?

Presented at AAFP Residency Leadership Summit in Kansas City, MO, March 2022.

### The PRimary care Education and Practice Adoption Resource Evaluation for Continuous Glucose Monitoring (PREPARE 4 CGM) Study

Presented at 50th NAPCRG Annual Meeting in Phoenix, AZ, November 2022.

*For more information about BIGHORN, visit our website.*







# Colorado Research Network

Director: Don Nease [donald.nease@cuanschutz.edu](mailto:donald.nease@cuanschutz.edu)  
Manager: Mary Fisher [mary.fisher@cuanschutz.edu](mailto:mary.fisher@cuanschutz.edu)

CaReNet is a network of practices that care for vulnerable populations, including Federally Qualified Health Centers (FQHCs), FQHC look-alikes, and residency practices. CaReNet is a network of nearly 450 clinicians (family physicians, general internists, general pediatricians, and nurse practitioners) in both urban and rural practices, located along the front range, as well as in the San Luis Valley (SLV) in south central Colorado.

The purpose of CaReNet is to improve health and well-being by the application of the methods of science to questions important to primary care clinicians, their patients, and their communities. CaReNet is committed to questions with the potential to understand health, disease, and illness, and the roles and values of primary care, with a particular focus on disadvantaged populations.

## Active Projects



### Extraordinary Partners in Dementia: UCHealth Capacity for Pragmatic Interventions

**Funded by: National Institute on Aging**

*To understand Persons Living with Dementia and care partner perspectives on dementia health IT tools, focusing on underserved populations; to assess clinician preferences related to implementation and sustainability of dementia health IT tools in outpatient workflows; and to plan for embedded dementia health IT tool trials through building EHR capacity.*

## Dissemination

### Engaging a Diverse Patient and Care Partner Council to Redefine Dementia Care Digital Health Tools

Presented at the Gerontological Society of America Annual Scientific Meeting in Indianapolis, IN, November 2022

### NAPCRG Diamonds: Patient Clinician Dyads

Presented by Marcia and Kenneth Dailey, along with Don Nease, at the 50th NAPCRG Annual Meeting in Phoenix, AZ, November 2022.

## CaReNet Patient Partners Research Council (PPRC)

Formed in 2010, the CaReNet PPRC gathers regularly (every other month) to serve as patient experts, fully involved in research processes from inception to dissemination. The CaReNet PPRC consists of 12 patient partners, mainly retired professionals from a variety of fields: engineering, education, sales, nursing, accounting, real estate, and government, who live, work, and play in the Denver/Aurora metro area of Colorado. This group is staffed out of the University of Colorado Anschutz Medical Campus in the Department of Family Medicine.



*Pictured: CaReNet Patient Partners Research Council (PPRC), 2018*

*For more information about CaReNet, visit our website.*







# Colorado Children's Outcomes Network

Director: Sean O'Leary [sean.oleary@cuanschutz.edu](mailto:sean.oleary@cuanschutz.edu)  
Associate Director: Sarah Brewer [sarah.brewer@cuanschutz.edu](mailto:sarah.brewer@cuanschutz.edu)

COCONet is a network of pediatric and child health focused practices that works to improve the health and well-being of Colorado children and families. COCONet's mission is to conduct collaborative practice-based research and quality improvement that informs real-world clinical practice to improve the health and well-being of Colorado children and families. COCONet supports and conducts studies and projects to improve children's health and is committed to connecting practicing physicians and researchers to examine the most pressing questions facing pediatric providers in Colorado.

COCONet has a Network Advisory Board (NAB), as well as a Steering Committee, that both meet as-needed to discuss priority topics and to participate in projects and grant writing. The COCONet NAB meets each quarter and focuses meetings on current and developing projects.

## Dissemination

### **Motivational Interviewing for Maternal Immunizations: Intervention Development**

Published in *Vaccine*, November 2022.

Presented at the Pediatric Academic Societies (PAS) Meeting, April 2022.

### **Parent Attitudes Towards Childhood Vaccines After the Onset of SARS-CoV-2 in the United States**

Published in *Academic Pediatrics*, November-December 2022.

### **Multi-tiered Intervention to Increase Maternal Immunization Coverage: A Randomized, Controlled Trial**

Published in *Vaccine*, June 2022.

### **MomsTalkShots, tailored educational app, improves vaccine attitudes: a randomized controlled trial**

Published in *BMC Public Health*, November 2022.

For more information about COCONet, visit our website.



## Active Projects



### **Evaluation of the Presumptively Initiating Vaccination and Optimizing Talk with Motivational Interviewing (PIVOT with MI) Intervention**

**Funded by:** National Institutes of Health (NIH)

*PIVOT with MI aims to adapt motivational interviewing to the ob-gyn setting to provide information about how to improve provider communication and increase vaccine uptake among pregnant women.*



### **Engaging practices and communities in the development of interventions to promote HPV vaccine uptake**

**Funded by:** National Institutes of Health (NIH)

*The overall goal of this project is to engage key stakeholders with providers and researchers to develop and evaluate the impact of a novel and innovative, community-engaged intervention strategy for improving the uptake of HPV vaccine in the primary care setting.*



### **Adapting Motivational Interviewing for Maternal Immunization (MI4MI)**

**Funded by:** National Institutes of Health (NIH)

*A significant barrier to vaccine uptake is the lack of evidence to guide provider communication with patients who have concerns about vaccines. This novel study adapts motivational interviewing to the OB-GYN setting to provide information about how to improve provider communication and increase vaccine uptake among pregnant women.*



### **The HPV9-10 Trial: Early Initiation of HPV Vaccination**

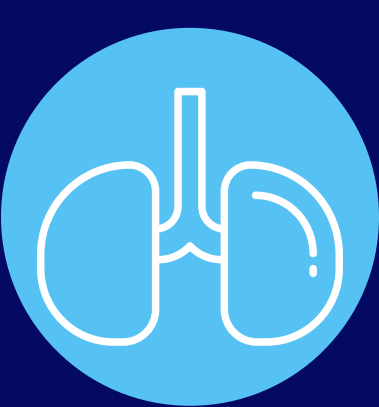
**Funded by:** National Institutes of Health (NIH) and National Cancer Institute (NCI)

*This cluster-randomized trial among >30 practices in Colorado and Southern California seeks to assess the comparative effectiveness of recommending the HPV vaccine at ages 9-10 vs. ages 11-12 years for improving HPV vaccination uptake.*



HPRN is a geographically based network of health care teams in rural eastern Colorado. Established in 1997, HPRN is an integrated rural network of clinicians and health care facilities located in the 16 counties of eastern rural Colorado. The HPRN region covers 30,000 square miles and is home to approximately 150,000 people, 30% of whom are Hispanic. HPRN includes 16 hospitals ranging from six to forty acute care beds all between 50 and 180 miles from the closest tertiary care center, 53 primary care practices, 15 nursing homes, 3 home health agencies, 4 public health departments, and 3 hospice organizations. Eight of the Colorado counties served by HPRN clinics have been officially designated Health Professional Shortage Areas, and 4 are Medically Underserved Areas. HPRN's mission is to provide excellent rural health care by translating the best scientific evidence into every day clinical practice.

## Active Projects



### **COPD Assessment in Primary Care to Identify Undiagnosed Respiratory Disease and Exacerbation Risk (CAPTURE)**

**Funded by:** National Heart, Lung, and Blood Institute of the National Institutes of Health

*A partnership with the Cornell University to conduct a randomized clinical trial testing a simple case finding tool to identify individuals in primary care settings with "clinically significant COPD," those most likely to benefit from currently available therapies.*



### **Tackling Loneliness with Communities (TLC)**

**Funded by:** Colorado Clinical and Translational Sciences Institute's Community Engagement Pilot Grant Awards

*A pilot study using a community-engaged approach to partner with community members in eastern Colorado to better understand loneliness and social connection and coping strategies.*



### **Changing Our Mental and Emotional Trajectory (COMET)**

**Funded by:** SNOCAP Internal Funds

*A very upstream approach to address mental and emotional health issues before they become a crisis. Offering the COMET Train the Trainer Program and ongoing evaluation.*

## Dissemination

**Informing a Randomized Control Trial in Rural Populations: Adaptation of a Diabetes Self-Management Education and Support Intervention**  
Published in *JMIR Diabetes*, June 2022

**The Balance Between Serving the Community and the Reality of Treating Opioid Use Disorder in Rural Primary Care Practices**  
Published in the *Journal of Health Care for the Poor and Underserved*, February 2022.

**Changing Our Mental and Emotional Trajectory to Improve Mental Health in Rural Communities: the COMET Program**  
Presented at the NAPCRG Annual Meeting in Phoenix, AZ, November 2022.  
Presented at Public Health in the Rockies in Keystone, CO, September, 2022.

**Qualitative Findings of a Culturally-Tailored Rural Diabetes One-Day DSMES Program in Eastern Colorado**  
Presented at the American Diabetes Association's 82nd Scientific Sessions in New Orleans, LA, June 2022.

## HPRN Community Advisory Council (CAC)

The HPRN has an active Community Advisory Council (CAC) that was established in 2003 and consists of 12 local residents of eastern Colorado, including farmers, ranchers, teachers, para-health professionals, small business workers, office workers, students, and retirees. By joining the best science with the best community knowledge, HPRN and the CAC can produce something better than either could alone.

*For more information about HPRN, visit our website.*





Starting in 2017, interest for a new PBRN on the Western Slope grew as a few practices became involved in PBRN projects and recognized that very few others were involved. In addition, there are issues specific to the geographic region that likely require asking different questions and potentially using different research strategies to answer them. The model for this PBRN is one that includes health care related organizations as well as practices and practitioners, as well as several different organizations ranging from academic institutions to Health Information Technology companies. Due to this scope of involvement, the network is called PEACHnet, which stands for Partners Engaged in Achieving Change in Healthcare Network.

## Active Projects



### Campeones de la Salud (Health Champions)

**Funded by:** Eagle County Department of Public Health and Environment/US Department of Health and Human Services

*Campeones de la Salud (CDLS) is a two-year initiative to improve health literacy and the accessibility of the health care system to Hispanic/Latinx patients and Spanish speakers in Eagle, Lake, Garfield, and Mesa counties.*



### Recognizing Adults with Developmental Disabilities in Self-Advocacy Through Engagement (RADIATE)

**Funded by:** Patient-Centered Outcomes Research Institute (PCORI)

*RADIATE is a project supported by a Eugene Washington Engagement Award intended to develop community coalitions and a research agenda focused on young adults with intellectual and developmental disabilities, health promotion and social needs.*



### COIS3: Pragmatic Approaches to Assess and Enhance Value of Cancer Prevention and Control in Rural Primary Care

**Funded by:** National Institutes of Health (NIH) and National Cancer Institute (NCI)

*The COISC3 is a P50 Cancer Center exploring new approaches using implementation science for cancer prevention and control. PEACHnet practices participated in pilot programs, a needs assessment and an administrative supplement exploring cancer screening and social needs.*



**For more information about PEACHnet, visit our website.**

## Dissemination

### IMAGINE: A Trial of Messaging Strategies for Social Needs Screening and Referral

Published in the *American Journal of Preventative Medicine*, September 2022.

### Implementing Health-Related Social Needs Screening in Western Colorado Primary Care Practices

Published in *Health & Social Care in the Community*, February 2022.

### Multi-stakeholder Perspectives on Data Sharing to Address Patient Food Insecurity

Published in the *Journal of the American Board of Family Medicine*, January 2022

### Growing PEACHnet: Building a Practice-Based Research Network in Western Colorado

Published in the *Journal of the American Board of Family Medicine*, January 2022.

### Suicide Prevention - Unified Research: Developing Capacity for Community-Engaged Suicide Prevention Research in Western Colorado

Presented at the NAPCRG Annual Meeting in Phoenix, AZ, November 2022.

### "What Business is it of Yours?": Patient Recommendations for Communication about Health-Related Social Needs Screening in Western Colorado Primary Care Practices

Presented at the Public Health in the Rockies Conference in Keystone, CO, September 2022.



*Pictured: PEACHNet Regional Advisory Board (RAB), 2022*



# SNOCAP Projects

SNOCAP-wide projects are collaborations between two or more practice-based research networks (PBRNs). Selected SNOCAP-wide projects are highlighted on this page.

## Home vs. Office Medication Effectiveness Research (HOMER)

**Funded by:** Patient-Centered Outcomes Research Institute (PCORI)

*HOMER is a randomized, parallel group, three-arm pragmatic comparative effectiveness trial that compares standard Medication-assisted treatment (MAT) office induction with induction that occurs at home, either through telehealth or with office support.*



## Patient-Perception of Primary Care Practice Burnout Card Study

**Funded by:** SNOCAP Internal Funding

*SNOCAP was tasked by patient, practice, and community partners to explore the prevalence of clinic staff burnout. Burnout is being described in this project as "physical or mental collapse caused by overwork or stress." The aim of this study is to examine the patient view of burnout at the clinic where they receive care, partnering patient views with a survey of clinic team members themselves.*



## MetaLARC: A Community-Based Assessment of Skin Care, Allergies, and Eczema (CASCADE)

**Funded by:** Oregon Health and Science University

*CASCADE is a pragmatic community-based randomized controlled trial investigating whether daily full-body emollient therapy starting in the first two months of life prevents atopic dermatitis (AD) and analyzes whether a family history of allergic disease and key early life exposures modify the preventive effect of emollient therapy on AD.*



## Facilitating Alcohol Screening and Treatment (FAST)

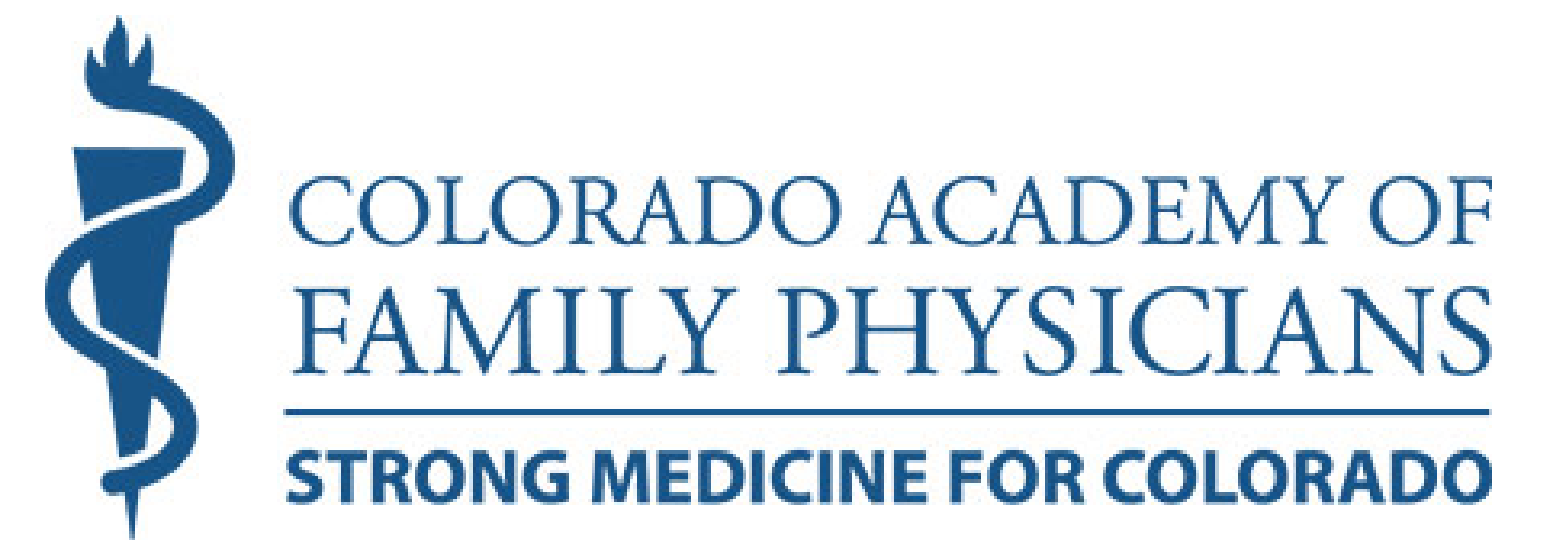
**Funded by:** Agency for Healthcare Research and Quality

*Cluster randomized trial to examine effectiveness and relative value of two approaches to supporting primary care practices to improve their identification and treatment of unhealthy alcohol use among adults, including screening, brief intervention, medication assisted therapy, and referral to treatment.*





# Partners in this Work



Colorado Family Medicine Residencies



## SNOCCAP

State Networks of Colorado Ambulatory Practices & Partners

### CONTACT US

Donald Nease: [donald.nease@cuanschutz.edu](mailto:donald.nease@cuanschutz.edu)

Mary Fisher: [mary.fisher@cuanschutz.edu](mailto:mary.fisher@cuanschutz.edu)

Allison Sands: [allison.r.sands@cuanschutz.edu](mailto:allison.r.sands@cuanschutz.edu)



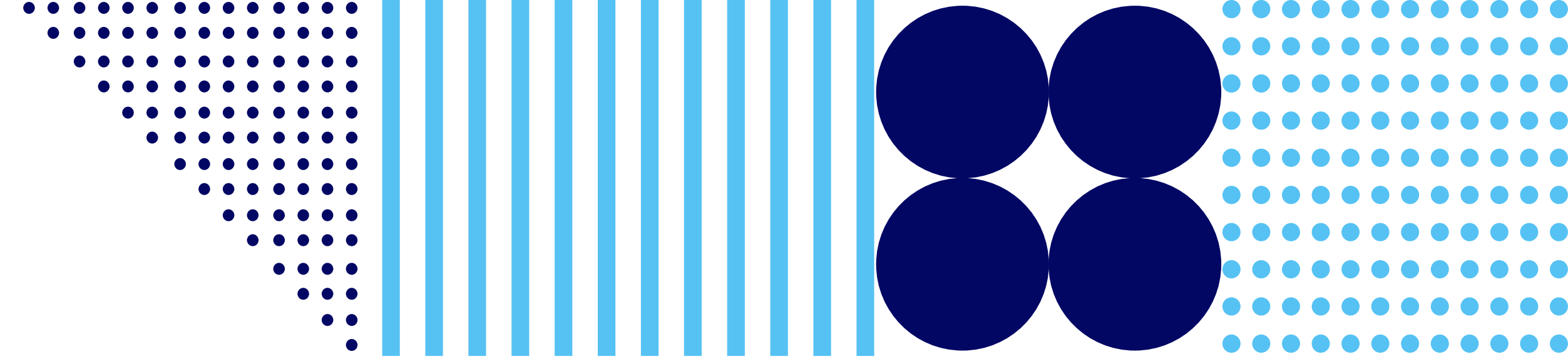


# Appendices





# Glossary



## *Helpful Acronyms*

### A

**AAFP**

American Academy of Family Physicians

**ACCORDS**

Adult and Child Consortium for Health Outcomes Research and Delivery Science

**AHRQ**

Agency for Healthcare Research and Quality

### B

**BCT**

Boot Camp Translation

**BIGHORN**

Building InvestiGative practices for better Health Outcomes Research Network

### C

**CAC**

Community Advisory Council

**CAFP**

Colorado Academy of Family Physicians

**CaReNet**

Colorado Research Network

**CASCHEW**

Convening Across Sectors for Colorado's Health Equity and Wellness

**CCTSI**

Colorado Clinical and Translational Sciences Institute

**CFMR**

Colorado Family Medicine Residencies

**CGM**

Continuous Glucose Monitoring

**COCONet**

Colorado Children's Outcomes Network

**COPD**

Chronic Obstructive Pulmonary Disease

### D

**DFM**

Department of Family Medicine

### E

**EHR**

Electronic Health Record

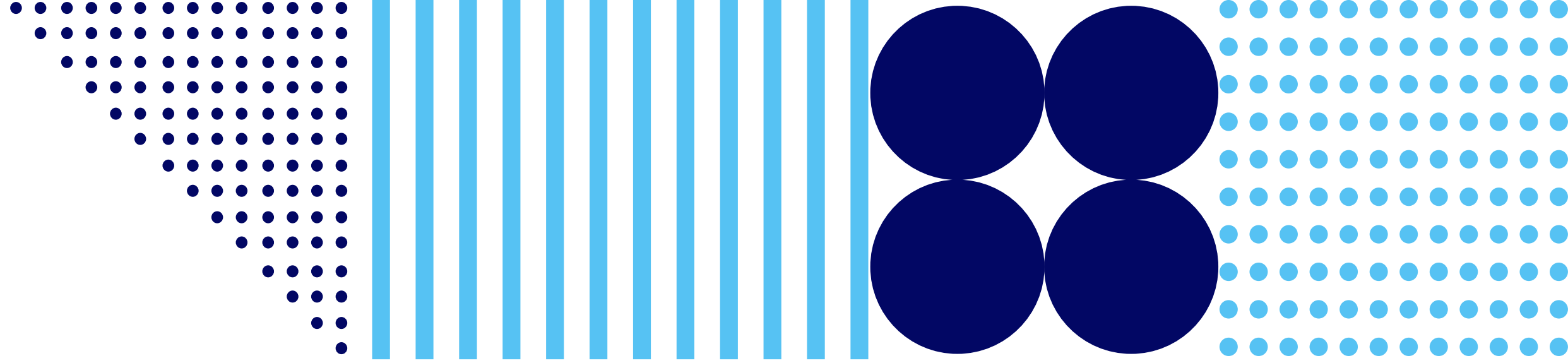
### F

**FQHC**

Federally Qualified Health Center



# Glossary



## H

**HPRN**

High Plains Research Network

## M

**Meta-LARC**

Meta-Network Learning and Research Center

## N

**NAB**

Network Advisory Board

**NAPCRG**

North American Primary Care Research Group

**NCI**

National Cancer Institute

**NHLBI**

National Heart, Lung, and Blood Institute

**NIA**

National Institute on Aging

**NIH**

National Institutes of Health

**NIMH**

National Institute of Mental Health

## P

**PBRN**

Practice Based Research Network

**PCORI**

Patient-Centered Outcomes Research Institute

**PEACHNet**

Partners Engaged in Achieving Change in Health Network

**PPRC**

Patient Partners Research Council

## R

**RAB**

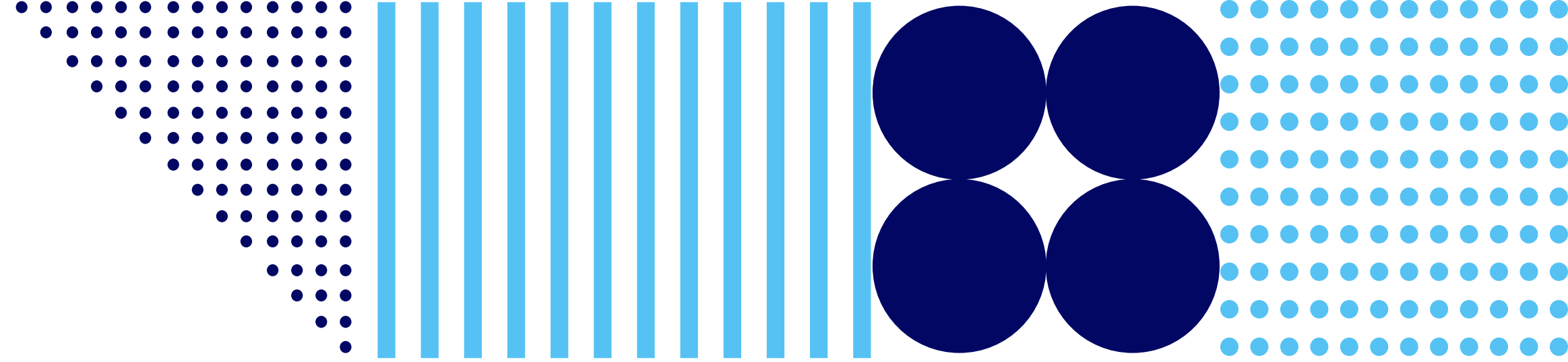
Research Advisory Board

## S

**SNOCAP**

State Networks of Colorado Ambulatory Practices and Partners





## *Definitions*

### **Active Project**

An active project is any funded research project beginning, continuing, or concluding in a given year (for the purposes of this report, 2022).

### **Dissemination**

Dissemination materials are public-facing outputs from research, usually publications in academic journals or presentations.

### **Network Director**

Network Directors are appointed as described in SNOCAP's bylaws. All research conducted within a network is under the jurisdiction of the network's Director.

### **Practice-Based Research Network**

Practice-based research networks link primary care clinicians with investigators to answer community-based healthcare questions and translate research findings into practice.<sup>1</sup>

### **Presentation**

A presentation is any abstract, poster, or presentation that (a) describes either a SNOCAP study or a study using SNOCAP resources and/or (b) is presented to an audience outside the investigator's institution (e.g., a national conference)

### **Social Determinants of Health (SDoH)**

Social determinants of health are the conditions in the environments where people are born, live, learn, work, play, worship, and age that affect a wide range of health, functioning, and quality-of-life outcomes and risks.<sup>2</sup>

<sup>1</sup> Agency for Healthcare Research and Quality. PBRN Profiles. Department of Health and Human Services. <https://www.ahrq.gov/ncepcr/research-transform-primary-care/pbrn/profiles/index.html>

<sup>2</sup> Office of Disease Prevention and Health Promotion. Social Determinants of Health. <https://health.gov/healthypeople/priority-areas/social-determinants-health>



# Projects Appendix

## BIGHORN



### **Practice Facilitation to Enhance Implementation of a Pediatric Suicide Prevention Care Pathway**

**Principal Investigator:** Nederveld, Andrea

**Funded By:** National Institute of Mental Health (NIMH)

**Project Description:** This project is a pilot test of practice-based education and screening intervention in primary care.

## CaReNet



### **Extraordinary Partners in Dementia: UCHealth Capacity for Pragmatic Interventions (MemoryTech)**

**Principal Investigator:** Lum, Hillary

**Funded By:** National Institute on Aging

**Project Description:** This project aims to understand Persons Living with Dementia and care partner perspectives on dementia health IT tools, focusing on underserved populations; to assess clinician preferences related to implementation and sustainability of dementia health IT tools in outpatient workflows; and to plan for embedded dementia health IT tool trials through building EHR capacity.

## COCONet



### **Adapting Motivational Interviewing for Maternal Immunization (MI4MI)**

**Principal Investigator:** O'Leary, Sean

**Funded By:** National Institutes of Health (NIH)

**Project Description:** A significant barrier to vaccine uptake is the lack of evidence to guide provider communication with patients who have concerns about vaccines. This novel study adapts motivational interviewing to the OB-GYN setting to provide information about how to improve provider communication and increase vaccine uptake among pregnant women.



### **Engaging Practices and Communities in the Development of Interventions to Promote HPV Vaccine Uptake**

**Principal Investigator:** O'Leary, Sean

**Funded By:** National Institutes of Health (NIH)

**Project Description:** The overall goal of this project is to engage key stakeholders with providers and researchers to develop and evaluate the impact of a novel and innovative, community-engaged intervention strategy for improving the uptake of HPV vaccine in the primary care setting.



# Projects Appendix



## **Evaluation of the Presumptively Initiating Vaccination and Optimizing Talk with Motivational Interviewing (PIVOT with MI) Intervention**

**Principal Investigator:** O'Leary, Sean

**Funded By:** National Institutes of Health (NIH)

**Project Description:** This project aims to adapt motivational interviewing to the ob-gyn setting to provide information about how to improve provider communication and increase vaccine uptake among pregnant women.



## **The HPV 9-10 Trial: Early Initiation of HPV Vaccination**

**Principal Investigator:** O'Leary, Sean

**Funded By:** National Institutes of Health (NIH)

**Project Description:** This cluster-randomized trial among >30 practices in Colorado and southern California seeks to assess the comparative effectiveness of recommending the HPV vaccine at ages 9-10 vs. ages 11-12 years for improving HPV vaccination uptake.

## HPRN

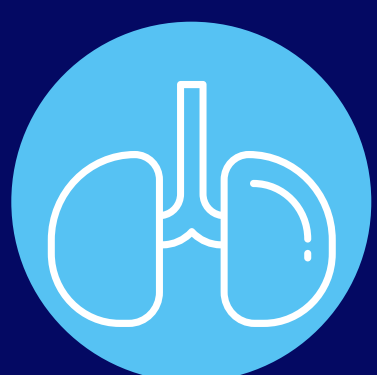


## **Adapting and Assessing the Feasibility of a Diabetes Self-Management Education and Support Telehealth Intervention for Rural Populations to Reduce Disparities in Diabetes Care**

**Principal Investigator:** Oser, Tamara

**Funded By:** University of Utah, National Institute of Nursing Research (NINR), National Institutes of Health (NIH)

**Project Description:** Adapting one-day diabetes self-management and education program for use in rural eastern Colorado primary care. A partnership with University of Utah, HPRN's CAC used Boot Camp Translation to modify materials and program structure for rural communities and practices. Randomized control trial currently in the final analysis phase.



## **The CAPTURE Study: Validating a Unique COPD Screening Tool in Primary Care**

**Principal Investigator:** Zittleman, Linda

**Funded By:** Cornell University Weill Medical College, National Heart, Lung, and Blood Institute (NHLBI), National Institutes of Health (NIH)

**Project Description:** This project is a partnership with the Cornell University. Randomized clinical trial testing a simple case finding tool to identify individuals with "clinically significant COPD," those most likely to benefit from currently available therapies.



## **Colorado State Opioid Response 2.0**

**Principal Investigator:** Knierim, Kyle

**Funded By:** State of Colorado Office of Behavioral Health

**Project Description:** This project is a partnership with the Practice Innovation Program Opioid Management program to offer the IT MATTTRs Practice Team Training, MAT Resources, and implementation support to practice teams around Colorado.



# Projects Appendix



## **Tackling Loneliness with Communities (TLC)**

**Principal Investigator:** Mullen, Rebecca

**Funded By:** Colorado Clinical and Translational Sciences Institute's Community Engagement Pilot Grant Awards

**Project Description:** Partnering with eastern Colorado communities to better understand loneliness and social connection.

## PEACHNet



## **Campeones de la Salud (Health Champions)**

**Principal Investigator:** Nederveld, Andrea

**Funded By:** Eagle County Department of Public Health and Environment/US Department of Health and Human Services

**Project Description:** Campeones de la Salud (CDLS) is a two-year initiative to improve health literacy and the accessibility of the health care system to Hispanic/Latinx patients and Spanish speakers in Eagle, Lake, Garfield, and Mesa counties.

## **Comparing Practice Implementation and Patient-Centered Outcomes of Standardized vs. Patient-Driven Diabetes Shared Medical Appointment**

**Principal Investigator:** Kwan, Bethany and Waxmonsky, Jeanette

**Funded By:** Patient-Centered Outcomes Research Institute (PCORI)

**Project Description:** Shared medical appointments (SMAs) for diabetes have been shown to be an effective approach for helping patients manage their type-2 diabetes. This study sought to answer some questions around the best ways to deliver SMAs for primary care patients with diabetes - offering diabetes self-management education and support.

## **Recognizing Adults with Developmental Disabilities in Self-Advocacy Through Engagement (RADIATE)**

**Principal Investigator:** Nederveld, Andrea

**Funded By:** Patient-Centered Outcomes Research Institute (PCORI)

**Project Description:** RADIATE is a project supported by a Eugene Washington Engagement Award intended to develop community coalitions and a research agenda focused on young adults with intellectual and developmental disabilities, health promotion and social needs.

## SNOCAP

## **Home vs. Office Medication Effectiveness Research (HOMER)**

**Principal Investigator:** Nease, Don and Zittleman, Linda

**Funded By:** Patient-Centered Outcomes Research Institute (PCORI)

**Project Description:** HOMER is a randomized, parallel group, three-arm pragmatic comparative effectiveness trial that compares standard Medication-assisted treatment (MAT) office induction with induction that occurs at home, either through telehealth or with office support.



# Projects Appendix



## **Meta-LARC: Advance Care Planning (ACP) in Primary Care**

**Principal Investigator:** Nowels, David (local PI)

**Funded By:** Patient-Centered Outcomes Research Institute (PCORI)

**Project Description:** Meta-LARC ACP is a cluster-randomized trial that compares team-based versus primary care clinician-focused advance care planning in practice-based research networks.



## **Innovation Support Project (ISP)**

**Principal Investigator:** Dickinson, Perry

**Funded By:** University of Colorado Anschutz Medical School

**Project Description:** To support practices in improving the quality of care while enhancing the opportunity to succeed in new payment models, including Medicaid's Alternative Payment Model



## **The SHARE Approach: A Model for Shared Decision Making**

**Principal Investigator:** Sherer, Laura

**Funded By:** Agency for Healthcare Research and Quality (AHRQ)

**Project Description:** The goal of this project is to evaluate the implementation and effectiveness of the SHARE Approach for improving clinician shared decision making (SDM). The three primary objectives of this project are: update SHARE Approach curriculum and tools to have updated references and relevance for SDM in the context of problem solving and to shorten the curriculum to facilitate implementation; how the SHARE Approach is implemented in four cardiology and eight primary care clinics across the State of Colorado; assess effectiveness of the SHARE Approach in improving clinicians' use of SDM with patients facing treatment choices and with complex issues involving both short- and long-term problem solving.



## **Patient Perception of Primary Care Practice Burnout Study**

**Principal Investigator:** Nease, Don

**Funded By:** SNOCAP Internal Funding

**Project Description:** SNOCAP was tasked by patient, practice, and community partners to explore the prevalence of clinic staff burnout. Burnout is being described in this project as "physical or mental collapse caused by overwork or stress." The aim of this study is to examine the patient view of burnout at the clinic where they receive care, parntering patient views with a survey of clinic team members themselves.

## **Meta-LARC: A Community-Based Assessment of Skin Care, Allergies, and Eczema (CASCADE)**

**Principal Investigator:** Nease, Don

**Funded By:** Oregon Health and Science University

**Project Description:** CASCADE is a pragmatic community-based randomized controlled trial investigating whether daily full-body emollient therapy starting in the first two months of live prevents atopic dermatitis (AD) and analyzes whether a family history of allergic disease and key early life exposures modify the preventive effect of emollient therapy on AD.



# Projects Appendix



## **COVER Colorado**

**Principal Investigator:** O'Leary, Sean

**Funded By:** Colorado Department of Public Health and Environment (CDPHE)

**Project Description:** COVER Colorado seeks to reduce disparities in COVID-19 vaccine uptake among adolescents and young adults in rural communities using rapid BCTs to create locally relevant campaigns.



## **RADVax: Using Boot Camp Translation to Address Rural Disparities in Adolescent Vaccination**

**Principal Investigator:** O'Leary, Sean and Dempsey, Amanda

**Funded By:** Centers for Disease Control and Prevention and University of Colorado

**Project Description:** This project sought to understand the reasons underlying this disparity, and use a community-engaged research process, called Boot Camp Translation (BCT), to design and test community-relevant strategies to mitigate this disparity among rural Colorado adolescents.



## **Facilitating Alcohol Screening and Treatment (FAST)**

**Principal Investigator:** Dickinson, Perry

**Funded By:** Agency for Healthcare Research and Quality

**Project Description:** Cluster randomized trial to examine effectiveness and relative value of two approaches to supporting primary care practices to improve their identification and treatment of unhealthy alcohol use among adults, including screening, brief intervention, medication assisted therapy, and referral to treatment.

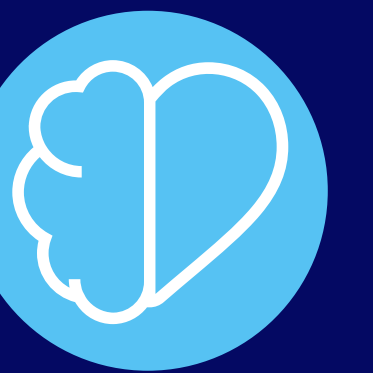
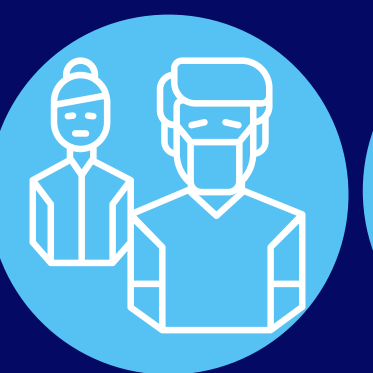


## **Screening, Brief Intervention, and Referral to Treatment (SBIRT) Implementation**

**Principal Investigator:** Zittleman, Linda

**Funded By:** Peer Assistance/Substance Abuse and Mental Health Services Administration (SAMHSA)

**Project Description:** This project aims to implement screening and brief intervention for clinics in eastern Colorado.



## **Changing Our Mental and Emotional Trajectory (COMET)**

**Principal Investigator:** Zittleman, Linda

**Funded By:** SNOCAP Internal Funding

**Project Description:** This project is a very upstream approach to discussing mental and behavioral health. Offered as a training program with evaluation component.



# Projects Appendix



## **COISC3: Pragmatic Approaches to Assess and Enhance Value of Cancer Prevention and Control in Rural Primary Care**

**Principal Investigator:** Glasgow, Russell

**Funded By:** National Institutes of Health (NIH), National Cancer Institute (NCI)

**Project Description:** The COISC3 is a P50 Cancer Center exploring new approaches using implementation science for cancer prevention and control. PEACHnet practices participated in pilot programs, a needs assessment and an administrative supplement exploring cancer screening and social needs.



## **Bionic Pancreas System**

**Principal Investigator:** Oser, Tamara

**Funded By:** Helmsley Charitable Trust

**Project Description:** The goal of this study is to assess whether a fully automated closed-loop bionic pancreas system will achieve similar outcomes (average glucose, time in range, time in hypoglycemia) when deployed through community-based primary care versus academic endocrinologists, and when delivered in-person versus telehealth.

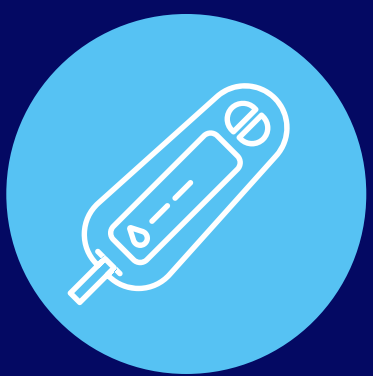


## **Colorado Community Engagement Alliance Against COVID-19 Disparities (CO-CEAL)**

**Principal Investigator:** Nease, Don

**Funded By:** National Institutes of Health (NIH), Westat

**Project Description:** The mission of CO-CEAL is to provide trustworthy information through active community engagement and outreach to the people hardest-hit by the pandemic while building long-lasting community partnerships to improve diversity and inclusion in COVID-19 research for new treatments, vaccines and other virus prevention practices.



## **Invested in Diabetes**

**Principal Investigator:** Kwan, Bethany and Waxmonsky, Jeanette

**Funded By:** Patient-Centered Outcomes Research Network (PCORI)

**Project Description:** Shared Medical Appointments with and without multidisciplinary care teams and patient topic choice for improving patient-centered and clinical outcomes related to diabetes. COVID has allowed the team to consider different ways of convening both in-person and virtually.



# Publications Appendix

## BIGHORN

### "We've Really Built Something": Why Family Medicine Program Directors Stay in Their Positions - A Qualitative Study

**Authors:** Douglas H. Fernald, Christina M. Hester, Steven R. Brown

**Journal Info:** *Journal of Graduate Medical Education* 14.4 (2022): 451-457

## COCONet

### MomsTalkShots, tailored educational app, improves vaccine attitudes: A Randomized Controlled Trial

**Authors:** Matthew Z. Dudley, Saad B. Omer, Sean T. O'Leary, Rupali J. Limaye, Mallory K. Ellingson, Christine I. Spina, Sarah E. Brewer, Robert A. Bednarczyk, Allison T. Chamberlain, Fauzia Malik, Paula M. Frew, Cathy Church-Balin, Laura E. Riley, Kevin A. Ault, Walter A. Orenstein, Neal A. Halsey, and Daniel A. Salmon

**Journal Info:** *BMC Public Health* 22.1 (2022): 1-12

### Motivational Interviewing for Maternal Immunizations: Intervention Development

**Authors:** Jessica R. Cataldi, Mary E. Fisher, Sarah E. Brewer, Christine I. Spina, Russell E. Glasgow, Cathryn Perriera, Fiona Cochran, and Sean T. O'Leary

**Journal Info:** *Vaccine* 12.40 (2022): 7604-7612

### Multi-tiered Intervention to Increase Maternal Immunization Coverage: A Randomized, Controlled Trial

**Authors:** Saad B. Omer, Sean T. O'Leary, Robert A. Bednarczyk, Mallory K. Ellingson, Christine I. Spina, Matthew Z. Dudley, Allison T. Chamberlain, Rupali J. Limaye, Sarah E. Brewer, Paula M. Frew, Fauzia A. Malik, Walter Orenstein, Neal Halsey, Kevin Ault, Daneil A. Salmon

**Journal Info:** *Vaccine* 40.34 (2022): 4955-4963

### Parent attitudes towards childhood vaccines after the onset of SARS-CoV-2 in the United States

**Authors:** Douglas J. Open, Anna Furniss, Chuan Zhou, John D. Rice, Heather Spielvogel, Christine Spina, Cathryn Perreira, Jessia Giang, Nicolas Dundas, Amanda Dempsey, Barbara Pahud, Jeffrey Robinson, Sean T. O'Leary

**Journal Info:** *Academic Pediatrics* 22.8 (2022): 1407-1413

## HPRN

### A telehealth diabetes intervention for rural populations: Protocol for a randomized controlled trial

**Authors:** Michelle L. Litchman, Bethany M. Kwan, Linda Zittleman, Juliana Simonetti, Eli Iacob, Kristen Curcija, Julie Neuberger, Gwen Latendress, Tamara K. Oser

**Journal Info:** *JMIR Research Protocols* 11.6 (2022): e34255



# Publications Appendix

## Improving Rates of Vitamin D Supplementation in Somali Immigrant Infants: A Prospective Interventional Pilot Trial

**Authors:** Jeffrey S. Cook, Allison Kimball, Linda Zittleman, Mark K. Huntington  
**Journal Info:** *Population* 12 (2022): 14

## Informing a Randomized Control Trial in Rural Populations: Adaptation of a Diabetes Self-Management Education and Support Intervention

**Authors:** Tamara K. Oser, Linda Zittleman, Kristen Curcija, Bethany Kwan, Shawnecca Burke, Sindy Gonzalez, Kelsey Huss, Marilee Johnson, Norah Sanchez, Julie Neuberger, Eli Iacob, Juliana Simonette, Michelle Litchman  
**Journal Info:** *JMIR Diabetes* 7.2 (2022): e35664



## A study examining the usefulness of a new measure of research engagement

**Authors:** Deborah J. Bowen, Nicole Ackermann, Vetta Saunders Thompson, Andrea Nederveld, Melody Goodman  
**Journal Info:** *Journal of General Internal Medicine* 37.Suppl 1 (2022): 50-56

## Growing PEACHNet: Building a Practice-Based Research Network in Western Colorado

**Authors:** Andrea L. Nederveld, Kelsey Fife Duarte, Elena T. Broaddus-Shea  
**Journal Info:** *Journal of the American Board of Family Medicine* 35.1 (2022): 115-123

## IMAGINE: a trial of messaging strategies for social needs screening and referral

**Authors:** Andrea L. Nederveld, Kelsey Fife Duarte, John D. Rice, Ashlyn Richie, Elena T. Broaddus-Shea  
**Journal Info:** *American Journal of Preventative Medicine* 63.3 (2022): S164-S172

## Implementing health-related social needs screening in western Colorado primary care practices: Qualitative research to inform improved communication with patients

**Authors:** Elena T. Broaddus-Shea, Kelsey Fife Duarte, Kathryn Jantz, Jenna Reno, Lauri Connelly, Andrea Nederveld  
**Journal Info:** *Health & Social Care in the Community* 30.5 (2022): e3075-e3085

## Methods for Capturing and Analyzing Adaptations: Implications for Implementation Research

**Authors:** Jodi S. Holtrop, Dennis Gurfinkel, Andrea L. Nederveld, Phoutdavone Phimphasone-Brady, Patrick Hosokawa, Claude Robinson, Jeanette A. Waxmonsky, Bethany M. Kwan  
**Journal Info:** *Implementation Science* 17 (2022): 51.

## Multistakeholder perspectives on data sharing to address patient food insecurity

**Authors:** Andrea L. Nederveld, Jodi Holtrop, Kelsey Fife Duarte, Macharnie Shalecki, Elena T. Broaddus-Shea  
**Journal Info:** *Journal of the American Board of Family Medicine* 35.1 (2022): 85-95



# Publications Appendix

**SNOCAP**

## Does a Rural Community-Based Intervention Improve Knowledge and Attitudes of Opioid Use Disorder and Medication-Assisted Treatment? A Report From the IT MATTTRs Study

**Authors:** Kristen Curcija, Linda Zittleman, Mary Fisher, Donald E. Nease Jr., L. Miriam Dickinson, Dionisia de la Cerda, Christin Sutter, Jen Ancona, James Rank, John M. Westfall  
**Journal Info:** *Journal of Rural Health* 38.1 (2022): 120-128

## Increasing capacity for treatment of opioid use disorder in rural primary care practices

**Authors:** Linda Zittleman, Kristen Curcija, Donald E. Nease, Mary Fisher, L. Miriam Dickinson, John F. Thomas, Ashley Espinoza, Christin Sutter, Jennifer Ancona, Jodi S. Holtrop, John M. Westfall  
**Journal Info:** *Annals of Family Medicine* 20.1 (2022): 18.23

## Methods for capturing and analyzing adaptations: implications for implementation research

**Authors:** Jodi S. Holtrop, Dennis Gurfinkel, Andrea Nederveld, Phoutdavone Phimphasone-Brady, Patrick Hosokawa, Claude Robinson, Jeanette A. Waxmonsky, Bethany M. Kwan  
**Journal Info:** *Implementation Science* 17.1 (2022): 1-16

## The balance between serving the community and the reality of treating opioid use disorder in rural primary care practices

**Authors:** Jodi S. Holtrop, Rebecca Mullen, Kristen Curcija, John M. Westfall, Linda Zittleman  
**Journal Info:** *Journal of Health Care for the Poor and Underserved* 33.1 (2022): 253-267

## The psychosocial needs of patients participating in diabetes shared medical appointments

**Authors:** Andrea L. Nederveld, Dennis Gurfinkel, Patrick Hosokawa, R. Mark Gritz, L. Miriam Dickinson, Phoutdavone Phimphasone-Brady, Jeanette A. Waxmonsky, Bethany M. Kwan  
**Journal Info:** *Journal of the American Board of Family Medicine* 35.6 (2022): 1103-1114

## The Watershed Of Practice-Based Research: Lessons And Opportunities From The COVID Pandemic

**Authors:** Katrina E. Donahue, Donna Manca, Jacqueline R. Halladay, Jinping Xu, Rowena J. Dolor, Hazel Tapp, Elexia Wright, Michelle L. Hernandez, Jack Westfall, Donald E. Nease  
**Journal Info:** *Health Affairs* January 20, 2022



# Presentations Appendix

## AAFP Residency Leadership Summit

*Kansas City, MO  
March 2022*

**Why Do Program Directors Leave Our Positions? And Why Do We Stay?**

**Presenters:** Doug Fernald, Christina M. Hester, Steven R. Brown

**Type of Presentation:** Oral Presentation

## Pediatric American Societies (PAS) Meeting

*Denver, CO  
April 2022*

**Motivational Interviewing for Maternal Immunizations: Intervention Development**

**Presenters:** Jessica R. Cataldi, Mary E. Fisher, Sarah E. Brewer, Christine I. Spina, Cathryn Perreira, Fiona Cochran, Sean T. O'Leary

**Type of Presentation:** Poster Presentation

## AcademyHealth Annual Research Meeting

*Washington, D.C.  
June 2022*

**Imagine: A Pragmatic Trial of Patient-Centered Communication Strategies for Health-Related Social Needs Screening and Referral in Primary Care**

**Presenters:** Elena T. Broaddus-Shea, Kelsey Duarte, John Rice, Ashlyn Richie, Amy Huebschmann, Andrea L. Nederveld

**Type of Presentation:** Poster Presentation

## American Diabetes Association's 82nd Scientific Sessions

*New Orleans, LA  
June 2022*

**Continuous Glucose Monitoring in Primary Care: Explaining Characteristics Associated with CGM Prescription**

**Presenters:** Tamara Oser, Tristen Hall, Meredith K. Warman, Melissa K. Filippi, Brian Manning, Elisabeth Callen, L. Miriam Dickinson, Leann C. Michaels, Donald E. Nease, Sean Oser

**Type of Presentation:** Poster Presentation

**Qualitative findings of a culturally-tailored rural diabetes one-day DSMES program in eastern Colorado**

**Presenters:** Kristen Curcija, Tamara Oser, Michelle L. Litchman, Bethany Kwan, Linda K. Zittleman, Julie Neuberger, Christin Sutter, Eli Iacob, Sindy J. Gonzalez, Gwen Latendresse

**Type of Presentation:** Poster Presentation



# Presentations Appendix

## NAPCRG Practice-Based Research Conference

Bethesda, MD  
June 2022

**Building on the Six Building Blocks: Supporting Colorado Safety-Net Clinics to Implement Safe Opioid Management**

**Presenter:** Douglas Fernald

**Type of Presentation:** Poster Presentation

**Growing and Adapting PBRN Research During a Pandemic: A CASFM PBRN Workshop**

**Presenters:** Douglas Fernald, Hazel Tapp, Kimberly Fulda, Carissa van den Berk-Clark

**Type of Presentation:** Oral Presentation

**IMAGINE: A Practice-Based Trial of Communication Strategies for Social Needs Screening and Referral**

**Presenters:** Elena Broaddus, Amy Huebschmann, Ashlyn Richie, Andrea Nederveld, John Rice

**Type of Presentation:** Oral Presentation

**Patient Perspectives of Burnout in Primary Care: Results of a Colorado Card Study**

**Presenters:** Mary Fisher, Elexia Wright, Donald Nease

**Type of Presentation:** Oral Presentation

**Scaling Up Field Notes for Research: What We Learned About Using Field Notes in Multiple Practice-Based Interventions**

**Presenters:** Douglas Fernald, Tristen Hall, Perry Dickinson

**Type of Presentation:** Poster Presentation

**The SNOCAP COVID-19 Crisis Response: Our COVID-19 Practice Outreach, Partnership, and Quick Response Journey Two Years Later**

**Presenters:** Mary Fisher, Elexia Wright, Donald Nease

**Type of Presentation:** Oral Presentation

**Suicide Prevention - Unified Research: Developing Capacity for Community-Engaged Suicide Prevention Research in Western Colorado**

**Presenters:** Andrea Nederveld, Elena Broaddus, Meghan Francone, Erica Kitzman, Mason Hohstadt, Kellyn Ender, Elizabeth Bell

**Type of Presentation:** Oral Presentation

**Tackling Loneliness in Communities (TLC) through Community-Generated Translational Research Questions**

**Presenters:** Rebecca Mullen, Maret Felzien, Kristen Curcija, Linda Zittleman

**Type of Presentation:** Poster Presentation



# **Presentations Appendix**

## **Association of Diabetes Care & Education Specialists (ADCES) Annual Conference**

*Baltimore, MD  
August 2022*

**Rural-D1D: A Hybrid Telehealth Intervention to Reach Multiple Primary Care Practices and Patients**

**Presenters:** Michelle L. Litchman, Tamara Oser, Juliana Simonetti, Linda Zittleman, Sindy Gonzalez, Kristen Curcija, Julie Neuberger, Gwen Latendresse, Eli Iacob

**Type of Presentation:** Poster Presentation

## **Public Health in the Rockies Conference**

*Keystone, CO  
September 2022*

**Changing Our Mental and Emotional Trajectory to Improve Mental Health in Rural Communities: the COMET Program**

**Presenters:** Kristen Curcija, Christin Sutter, Linda Zittleman, John Westfall, Joseph Carrica, Tamara Oser, Maret Felzien

**Type of Presentation:** Oral Presentation

**IMAGINE: A Pragmatic Trial of Patient-Centered Communication Strategies for Health-Related Social Needs Screening and Referral in Primary Care**

**Presenters:** Elena Broaddus, John Rice, Ashlyn Richie, Amy Huebschmann, Andrea Nederveld

**Type of Presentation:** Poster Presentation

**"What Business is it of Yours?": Patient Recommendations for Communication about Health-Related Social Needs Screening in Western Colorado Primary Care Practices**

**Presenters:** Elena Broaddus, Kelsey Fife Duarte, Kathryn Jantz, Jenna Reno, Lauri Connelly, Amy Huebschmann, Andrea Nederveld

**Type of Presentation:** Oral Presentation

## **NAPCRG 50th Annual Meeting**

*Phoenix, AZ  
November 2022*

**Changing Our Mental and Emotional Trajectory to Improve Mental Health in Rural Communities: the COMET Program**

**Presenters:** Kristen Curcija, Chris Frakes, John Westfall, Christin Sutter, Tamara Oser, Maranda Miller, Linda Zittleman, Maret Felzien, Joseph Carrica

**Type of Presentation:** Oral Presentation

**IMAGINE: A Practice-Based Trial of Communication Strategies for Social Needs Screening and Referral**

**Presenters:** Andrea Nederveld, Elena Broaddus, John Rice, Ashlyn Richie, Amy Huebschmann

**Type of Presentation:** Oral Presentation



# Presentations Appendix

## **NAPCRG Diamonds: Patient Clinician Dyads**

**Presenters:** Kenneth Dailey, Marcia Dailey, Donald Nease

**Type of Presentation:** Oral Presentation

## **Patient Initiation of Treatment for Opioid Use Disorder and Referral to a Randomized Study: Lessons from the HOMER Study**

**Presenters:** Douglas Fernald, Tristen Hall, Cory Lutgen, Jillian Alai, Sindy Gonzalez, Benjamin Sofie, Jennifer Ancona, Maret Felzien, Donald Nease

**Type of Presentation:** Oral Presentation

## **The PRimary care Education and Practice Adoption Resource Evaluation for Continuous Glucose Monitoring (PREPARE 4 CGM) Study**

**Presenters:** Kristen Crispe, Dionisia de la Cerda, Perry Dickinson, Doug Fernald, R. Mark Gritz, Tristen Hall, Bonnie Jortberg, Stephanie Kirchner, Sean Oser, Tamara Oser

**Type of Presentation:** Poster Presentation

## **Reaching Underrepresented Minority Populations in Clinical Research**

**Presenters:** Tamara Oser, Sindy Gonzalez, Michelle Litchman, Kristen Curcija, Christin Sutter, Eli Iacob, Linda Zittleman, Norah Sanchez, Minnie Rodriguez, Sergio Sanchez

**Type of Presentation:** Poster Presentation

## **Research in the Time of Cholera (or COVID-19): Lessons from the Field and Implications for Future Research**

**Presenters:** Linda Zittleman, Joseph LeMaster, John Westfall, Douglas Fernald, Benjamin Sofie, L. Miriam Dickinson, Bethany Kwan, Tristen Hall, Donald Nease, Brian Manning, Camille Hochheimer, Cory Lutgen, Melanie Murphy

**Type of Presentation:** Oral Presentation

## **Rural Diabetes One Day: A Pilot Clinical Trial**

**Presenters:** Tamara Oser, Bethany Kwan, Eli Iacob, Michelle Litchman, Kristen Curcija, Sindy Gonzalez, Christin Sutter, Julie Neuberger, Linda Zittleman

**Type of Presentation:** Poster Presentation

## **Strategies to Cope with Loneliness in Rural Communities: The Tackling Loneliness with Communities Pilot Project**

**Presenters:** Rebecca Mullen, Tamara Oser, Kristen Curcija, Maret Felzien, Linda Zittleman, Sandi Garcia, Ashley Espinoza

**Type of Presentation:** Poster Presentation

## **Suicide Prevention - Unified Research: Developing Capacity for Community-Engaged Suicide Prevention Research in Western Colorado**

**Presenters:** Andrea Nederveld, Elena Broaddus, Meghan Francone

**Type of Presentation:** Oral Presentation



# Presentations Appendix

## Gerontological Society of America Annual Scientific Meeting

*Indianapolis, IN  
November 2022*

**Engaging a Diverse Patient and Care Partner Council to Refine Dementia Care Digital Health Tools**

**Presenters:** Jessica Cassidy, Mary Fisher, Evelyn Romeo, Samantha Holden, Melanie Caffrey, Donald Nease, Hillary Lum

**Type of Presentation:** Poster Presentation

**Excursions into Health Care Systems to Help Informal Caregivers Manage Dementia**

**Presenters:** Richard Fortinsky, Christopher Callahan, Hillary Lum, Quincy Samus

**Type of Presentation:** Oral Presentation

## Team Conference for Hospice and Palliative Care

*Virtual Conference  
November 2022*

**Engaging a Diverse Patient and Care Partner Council to Refine Dementia Care Digital Health Tools**

**Presenters:** Jessica Cassidy, Hillary Lum

**Type of Presentation:** Poster Presentation