

CAMPFIRE

*Colorado Ambulatory Partnership
for Health Innovation and
Research Excellence*

ANNUAL MEETING 2026



June 12, 2026

Contents

Agenda at a Glance	2
Welcome	3
DoubleTree Cherry Creek	4
CAMPHIRE	5
Meet the Team	6
Keynote Speaker	7
Conference Sessions	8
Things to Know	11

Following the Annual Meeting,
please be sure to complete the
evaluation form!

We will have paper copies of the evaluation available
at the end of the conference, or you may complete
the evaluation form online using the QR code.



Anschutz

School of Medicine

CAMPHIRE is funded by the Department of Family Medicine at the University of Colorado Anschutz. We are grateful for the department's ongoing commitment and funding that make this work possible.

Agenda at a Glance

8:00 AM - 9:00 AM	Breakfast and Registration <i>Breakfast will be served at 8:30 AM</i>	Pre-Function Area
9:00 AM - 10:30 AM	General Session: What is CAMPHIRE? Facilitated Panel: How Can We Help?: How practices and partners can leverage CAMPHIRE resources to participate in research in Colorado	Colorado Ballroom
10:30 AM - 10:40 AM	Break	
10:40 AM - 11:30 AM	Morning Breakout Sessions*	Colorado Ballroom, Cherry Creek Room, Centennial Room
11:30 AM - 12:40 PM	Networking Lunch	Colorado Ballroom
12:40 PM - 1:30 PM	Afternoon Breakout Sessions*	Colorado Ballroom, Cherry Creek Room, Centennial Room
1:30 PM - 1:40 PM	Break	
1:40 PM - 2:30 PM	General Session: Health Policy Essentials for Colorado: Effects of H.R. 1	Colorado Ballroom
2:30 PM - 2:40 PM	Break	Colorado Ballroom
2:40 PM - 3:30 PM	Closing Keynote: Leveraging Engagement to Build Community Partnered Primary Care Research	Colorado Ballroom

*Pages 8-10 contain a detailed agenda listing the breakout session options.

Welcome



CAMPFIRE Annual Meeting

Friday, June 12, 2026

DoubleTree by Hilton Hotel

455 S Colorado Blvd, Denver, CO 80246

Dear Colleagues and Partners,

Welcome and thank you for being here for the inaugural Annual Meeting of CAMPFIRE's partners. Whether you come as a patient, clinician, state agency, community member, CU colleague, or other valued partner, it is truly a pleasure to gather with you for this milestone moment as we launch this shared space for learning, collaboration, and innovation in primary care across Colorado.

CAMPFIRE (the Colorado Ambulatory Partnership for Health Innovation and Research Excellence) was created to bring together primary care practices, community partners, researchers, and innovators to generate and translate evidence in real-world ambulatory and community settings. By intentionally integrating practice-based research, practice transformation and innovation, data, workforce development, and deep community engagement, CAMPFIRE represents a new statewide infrastructure designed to support work that is both rigorous and grounded in the realities of everyday care.

CAMPFIRE is built on a strong foundation established by two longstanding and impactful entities: the State Networks of Colorado Ambulatory Practices & Partners (SNOCAP) and its associated PBRNs, and the Practice Innovation Program (PIP). For many years, each of these programs cultivated trusted relationships with practices and communities across the state, advanced meaningful community- and practice-based research, and supported real-world improvement in care delivery. CAMPFIRE honors this important history and the many partners who shaped it, while bringing these complementary strengths together into a unified structure that positions us for even greater reach, relevance, and collective impact in the years ahead. We are excited to be on this journey in collaboration with each of you.

This first Annual Meeting reflects what CAMPFIRE is all about: partnership. We aim to use today to explore how collaboration in practice-based work meets the moment as the landscape of this work shifts. Each of you brings essential expertise, perspectives, and lived experience that strengthen our collective ability to improve health and well-being across the lifespan in this context. Today is an opportunity to connect with one another, share ideas, celebrate progress, and imagine what is possible when practices, communities, and researchers work together toward the common goal of healthier, happier communities.

We are energized by the creativity, curiosity, and commitment of this amazing group of partners, and we are grateful for your willingness to help shape and grow CAMPFIRE in the years to come. We hope this meeting sparks new relationships, meaningful conversations, and renewed momentum for the work ahead.

Thank you for being part of this important beginning. We are so glad you are here and look forward to building the future of CAMPFIRE together.

Warmly,
The CAMPFIRE Leadership Council

Sarah Brewer, PhD, MPA
Assistant Professor, University of Colorado
Department of Family Medicine
Co-Chair, CAMPFIRE

Bonnie Jortberg, PhD, RDN, CDCES
Associate Professor, University of Colorado
Department of Family Medicine
Co-Chair, CAMPFIRE

Douglas Fernald, MA
Senior Instructor, University of Colorado
Department of Family Medicine
Leadership Council Member, CAMPFIRE

Andrea Nederveld, MD, MPH
Associate Professor, University of Colorado
Department of Family Medicine
Leadership Council Member, CAMPFIRE

Sean T. O'Leary, MD, MPH
Professor, University of Colorado
Department of Pediatrics
Leadership Council Member, CAMPFIRE

Sean Oser, MD, MPH, CDCES
Associate Professor, University of Colorado
Department of Family Medicine
Leadership Council Member, CAMPFIRE

Tamara K. Oser, MD
Professor, University of Colorado
Department of Family Medicine
Leadership Council Member, CAMPFIRE

DoubleTree Cherry Creek



Conference Spaces

- 1 Colorado Ballroom
- 2 Centennial Room
- 3 Cherry Creek Room

Hotel Contact

(303) 388-5561

CAMPHIRE

The Colorado Ambulatory Partnership for Health Innovation and Research Excellence (CAMPHIRE) is comprised of the Practice Innovation Program (PIP) and the State Networks of Colorado Ambulatory Practices & Partners (SNOCAP). CAMPHIRE is an integrated partnership of **innovators, scientists, and clinicians** who produce and translate evidence in ambulatory care and community settings. We work with practices, partners, and communities to **conduct and foster collaborative practice- and community-based research, education, and innovation** in real-world clinical practice to improve the health and well-being of communities, across the lifespan.

Why partner with CAMPHIRE?

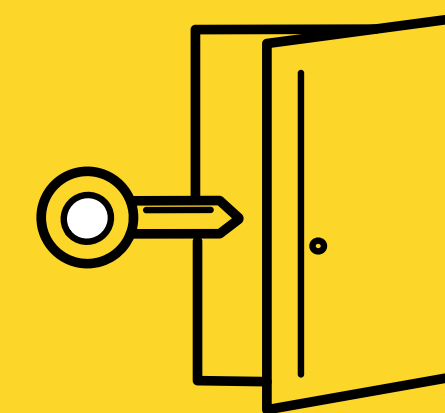
Most illnesses never advance to hospitalization or specialized care, yet most clinical teaching and research occurs in tertiary care centers. This has led to a mismatch between why people visit clinicians and what is investigated and taught. The daily phenomena of frontline clinical practice remain neglected. This frontier offers a host of opportunities to improve care for virtually all people.

"If you want more evidence-based practice, you need more practice-based evidence."

- Lawrence Green, PhD



Benefits of Partnership



Access experienced researchers, staff, and processes to conduct better research through communities of practice, training, and mentorship.



Better understand your patients and practice to deliver improved care and answer important questions.



Connect with like-minded professionals and share interests in improving healthcare through research.

Meet the Team



Leadership Council

Sarah Brewer, PhD, MPA	Co-Chair
Bonnie Jortberg, PhD, RDN, CDCES	Co-Chair
Doug Fernald, MA	
Andrea Nederveld, MD, MPH	
Sean O'Leary, MD, MPH	
Sean Oser, MD, MPH, CDCES	
Tamara Oser, MD	

Team Leads

Sarah Brewer, PhD, MPA	Community Engagement
Doug Fernald, MA	Research Design and Methods
Allyson Gottsman	Practice Relationships
Jennifer Halfacre	Practice Relationships
Bonnie Jortberg, PhD, RDN, CDCES	Workforce Development
Stephanie Kirchner, MSPH, RD	Field Operations for Research and Transformation
Lauren Quintana, MS	Communications
Sarah Staron, MPA	Government Relationships
Kim Wiggins, PhD, MEd, MA	Data and Analytics

Regional Engagement Specialists

Gus Basterrechea	San Luis Valley Region
Liz Bell	Western Slope Region
Taryn Bogdewiecz	Denver Metro Region
Sadie Fritzler, MA	Eastern Plains Region
Lauren Quintana, MS	Northern Colorado Region

Program Management

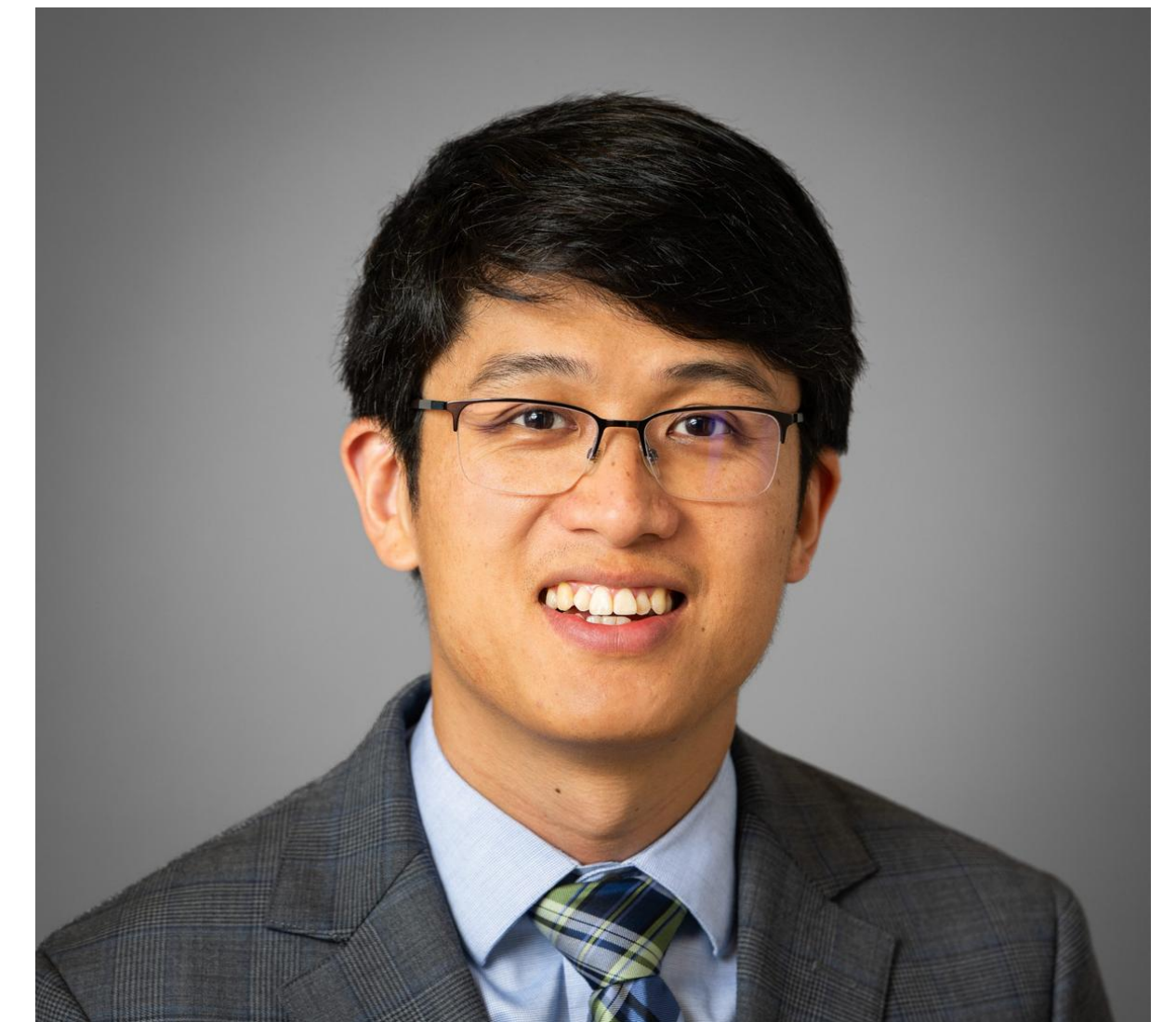
Kristin Crispe, MPH, PMP	Program Manager
Mary Fisher, MPH, CHES	Program Manager
Allison Lee	Program Coordinator

Keynote Speaker

Sebastian Tong, MD, MPH

University of Washington
Keynote Speaker

Sebastian Tong is an Associate Professor in the Department of Family Medicine at the University of Washington. He is a practicing family physician and addiction medicine specialist. He serves as the Associate Director of the WWAMI (Washington, Wyoming, Alaska, Montana and Idaho) region Practice and Research Network. Sebastian is also on the executive team that leads the joint University of Washington and Oregon Health Sciences University PRaCTICe hub of CARE for Health, an initiative that seeks to expand rural community engagement with research.



Sebastian leads research in behavioral health including expanding access to treatments for chronic pain and improving screening and management of loneliness in primary care. Sebastian graduated from Boston University School of Medicine, completed a Master of Public Health in Health Care Management and Policy at Harvard School of Public Health and finished family medicine residency at Greater Lawrence Family Health Center.

Closing Keynote

Leveraging Engagement to Build Community Partnered Primary Care Research

2:40 PM - 3:30 PM

Building and sustaining genuine engagement with practices, communities and patients is essential to building practice-based research that responds to the preferences and needs of communities. This presentation will describe tools for successful engagement of practices and communities using examples from the recent NIH CARE for Health Initiative-funded hubs and from ongoing practices at the WWAMI region Practice and Research Network.

Access conference materials online!



Conference Sessions

8:00 AM - 9:30 AM

Breakfast and Registration

Pre-Function Area

9:10 AM - 10:30 AM

Opening Session

Colorado Ballroom

What is CAMPHIRE?

Bonnie T. Jortberg, PhD, RDN, CDCES

This opening session will be an orientation to what CAMPHIRE is, how we engage our partners, and how we are a beneficial resource for CU Anschutz, and community practices and partners.

How Can We Help?:

How practices and partners can leverage CAMPHIRE resources to participate in practice-based research in Colorado

Doug Fernald, MA

Allyson Gottsman

Jennifer Halfacre

Bonnie T. Jortberg, PhD, RDN, CDCES

Stephanie Kirchner, MSPH, RD

Lauren Quintana, MS

Kim Wiggins, PhD

Mary Fisher, MPH, CHES (facilitator)

This facilitated panel will build upon the "What is CAMPHIRE?" session by offering a deeper, practical look at the range of resources CAMPHIRE provides to support research and practice-based collaboration. Panelists, composed of CAMPHIRE Team Leads, will share how each of their teams contributes to CAMPHIRE's work in supporting practices and advancing research and innovation efforts. Through guided discussion and real-world examples, panelists will highlight key tools, services, and partnership opportunities available to researchers, clinical practices, and community partners.

10:40 AM - 11:30 AM

Morning Breakout Sessions

Please choose a breakout session to attend during this time period.

Working with Practices in Communities: Regional Engagement Specialists Panel

Colorado Ballroom

Gus Basterrechea (he/him) - RES San Luis Valley Region

Liz Bell (she/her) - RES Western Slope Region

Taryn Bogdewiecz (they/them) - RES Denver Metro Region

Sadie Fritzler, MA - RES Eastern Plains Region

Lauren Quintana, MS (she/her) - RES Northern Colorado Region

Jennifer Halfacre (she/her) (facilitator)

Join us for a panel discussion with the CAMPHIRE Regional Engagement Specialists (RES) in your neighborhood! CAMPHIRE has local support in every region of Colorado (Eastern Plains, Denver Metro, San Luis Valley, Western Slope, and Northern Colorado). Connect with our team of specialists to learn more about what we do and how we are here to support you in practice-based research, quality improvement, and other relationships with the Department of Family Medicine.

Motivational Interviewing to Support Patient Engagement

Centennial Room

Carolyn Swenson, MSPH, MSN, RN

Motivational Interviewing (MI) is an evidence-based way to have a conversation about health behaviors to help patients resolve ambivalence and increase confidence about changing. When used consistently by all members of an interdisciplinary health team, it can enhance care efficiency and effectiveness. This session will explore the core principles and skills of MI and allow time for practice and discussion about how to apply it to common patient change issues.

CU eLearning Modules: What is Available for your Team?

Cherry Creek Room

Bonnie T. Jortberg, PhD, RDN, CDCES

CU eLearning is an evidence-based online training library that was developed to help primary care practices strengthen their ability to deliver patient-centered care. This session will describe the modules available for primary care teams, with eLearning module topics ranging from behavioral health integration to oral health integration, to improving dementia care.

11:30 AM - 12:30 PM

Networking Lunch

Colorado Ballroom

12:40 PM - 1:30 PM

Afternoon Breakout Sessions

Please choose a breakout session to attend during this time period.

This session runs from 11:40 AM - 1:30 PM. If you wish to join this training, please grab lunch in the buffet line and head to the Centennial Room with your food for this session to start at 11:40.

Changing Our Mental and Emotional Trajectory (COMET) Community Training

Centennial Room

Sadie Fritzler, MA

Jennifer Pollmiller, MA

COMET™ (Changing Our Mental and Emotional Trajectory) Community Training teaches a conversational guide that recognizes the values of neighbor helping neighbor and communities being their own best resource. Attendees discuss the concept of being “the other person,” learn and practice the COMET conversational questions, and plan how they think they will use COMET to more easily engage in conversations especially when concerned about another person’s emotional and mental well-being. Developed by the High Plains Research Network (HPRN) Community Advisory Council (CAC), the COMET Training gives participants a natural way to intervene when they are concerned about a friend or acquaintance.

CAMPFIRE Project Highlights: Lightning Round

Colorado Ballroom

Facilitating Alcohol Screening and Treatment: The FAST Study

Bonnie T. Jortberg, PhD, RDN, CDCES

Carolyn Swenson, MSPH, MSN, RN

This brief presentation will describe the FAST study and how it was implemented in 43 primary care practices in Colorado. The key outcomes and how practices can apply these learnings to improve their screening and treatment for unhealthy alcohol use will also be discussed.

Results and Lessons Learned Integrating Behavioral Health in Primary Care (Colorado HB 22-1302)

Doug Fernald, MA

Stephanie Kirchner, MSPH, RD

This presentation covers results and lessons learned from supporting 144 primary care practices in Colorado to integrate behavioral health services utilizing funding from the Colorado state legislature.

Practice Facilitation to Enhance Implementation of a Pediatric Suicide Prevention Care Pathway

Brian Pitts, MD

Anneka Quinn, FNP

Jasper Hillhouse, MD

This presentation will highlight the call for improved suicide prevention in pediatric primary care for national organizations along with current gaps in implementing these recommendations. It will then focus on our collaboration with CAMPFIRE to recruit and prepare partner clinics for universal suicide prevention and discuss the role of practice facilitation/implementation in supporting this work. We will highlight the initial implementation data and discuss clinician partner perspectives.

Integrated Care for Women and Babies: the Intersection of Policy and Practice

Liza M. Creel, PhD, MPH

Andrew Bienstock, MHA

This presentation will highlight Integrated Care for Women and Babies (ICWB), a program authorized by the Colorado General Assembly, administered by the Colorado Behavioral Health Association, and implemented by a team in CAMPFIRE. We will highlight the ICWB intervention, recent outcomes, and collaborations to advance both policy and practices.

The new era of care for weight management in primary care: Challenges and opportunities

Cherry Creek Room

Andrea Nederveld, MD, MPH
Jodi Summers Holtrop, PhD, MCHES
Elizabeth Bell

With the arrival of new weight loss medications, the landscape for primary care delivery of weight management care has changed. This session will highlight two studies that aim to support primary care clinicians and teams with delivering effective weight management care for patients.

1:40 PM - 2:30 PM

General Session

Colorado Ballroom

Health Policy Essentials for Colorado: Effects of H.R. 1

Kyle Leggott, MD
Hannah Crook, PhD

The One Big Beautiful Bill Act (OBBBA or H.R.1), signed into law by President Trump on July 4, 2025, will affect Medicaid, Medicare, the Affordable Care Act, and several other aspects of our health care system over the next few years. Some of these changes have already occurred, and others are forthcoming. While the impacts are not yet fully clear – especially in Colorado with the status of our current budget and TABOR implications – many experts agree that the long-term effects of the OBBBA will be devastating for practices, providers, and patients in the Centennial State. This informative session will discuss the policy provisions within this massive law, what is to come, and the impacts on the 2026 legislative session.

2:40 PM - 3:30 PM

Closing Keynote

Colorado Ballroom

Leveraging Engagement to Build Community Partnered Primary Care Research

Sebastian Tong, MD, MPH

Building and sustaining genuine engagement with practices, communities and patients is essential to building practice-based research that responds to the preferences and needs of communities. This presentation will describe tools for successful engagement of practices and communities using examples from the recent NIH CARE for Health Initiative-funded hubs and from ongoing practices at the WWAMI region Practice and Research Network.



Pictured: CAMPHIRE team members (partial group shown)

Things to Know

SMILE! CANDID PHOTOS TAKEN

By being at this conference, you're consenting to have photos of you taken to document the event, speakers, engagement opportunities, and other candid moments. Please let us know if you would not like to be in photos taken for educational, marketing, and/or communications purposes.



Following the Annual Meeting, please be sure to complete the evaluation form!

We will have paper copies of the evaluation available at the end of the conference, or you may complete the evaluation form online using the QR code.



NEED HELP?

Our conference hosts are happy to help. Please find a team member with a red ASK ME ribbon on their nametag, and we'll get you on your way.