

Improving Patient Outcomes for Unhoused High-Utilizers: Evaluation of a Hospital-Community Collaborative Transitional Housing Program

Rebekah A. Davis, MPH; Adnan Syed, Sarah Stella, MD

Intro

- Unstable housing is well-documented to increase risks of adverse health outcomes, acute healthcare utilization, and mortality.
- In December 2023, Denver Health and the Denver Housing Authority launched a transitional housing program that is located adjacent to the main hospital campus and offers safe, temporary housing to elderly or disabled patients experiencing homelessness as they transition out of the hospital.
- Participants benefit from in-home support and guidance provided by care managers and housing navigators.

Methods

- 15 semi-structured, in-depth interviews were conducted with a convenience sample of program participants.
- Using an interview guide, we explored participants' perceptions of the program's acceptability, facilitators, barriers, and overall impact on their health and access to resources.
- Thematic analysis was applied to interview transcripts

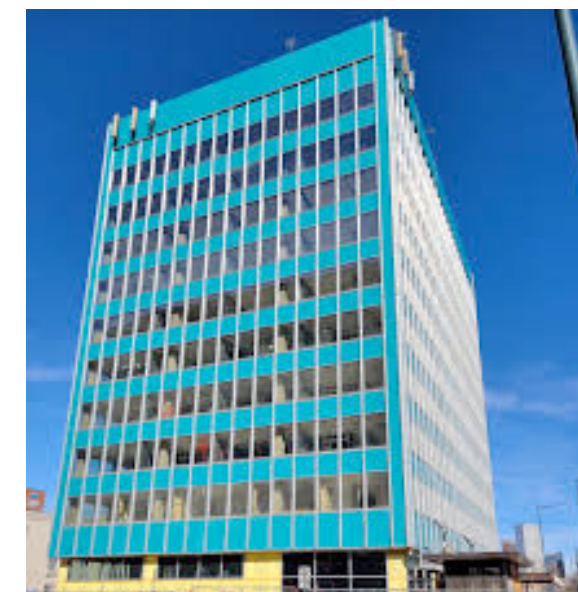
Results

Preliminary findings revealed three primary themes:

1. **Perceived Benefits** – Participants reported that the dedicated case manager and the proximity of housing to healthcare services were highly advantageous.
2. **Health Improvements and Enhanced Access to Care** – Many participants noted improved medication adherence and more consistent attendance at medical appointments
3. **Gratitude and Positive Impact on Housing Stability** – Participants expressed deep gratitude for the housing opportunity and described the program as a critical step toward securing permanent housing.

Conclusion

- The program is positively regarded by participants
- These findings highlight the importance of transitional housing and individualized case management in supporting health stabilization and long-term housing outcomes.
- Moving forward, plans include conducting additional interviews with key staff, to better understand barriers to implementation.
- Ongoing evaluations will also assess the program's long-term impact and explore strategies to engage tenants on their path toward stable housing.



References:

1. Khatana SAM, Wadhwa RK, Choi E, et al. Association of Homelessness with Hospital Readmissions-an Analysis of Three Large States. J Gen Intern Med. 2020;35(9):2576-2583. doi:10.1007/s11606-020-05946-4
2. Brown RT, Miao Y, Mitchell SL, et al. Health Outcomes of Obtaining Housing Among Older Homeless Adults. Am J Public Health. 2015;105(7):1482-1488. doi:10.2105/AJPH.2014.302539
3. Mistry N, Knoeckel J, McBeth L, Johnson A, Bredenberg E, Raffel K, Cunningham J, Sarccone E, Misky G, Stella SA. Prevalence of homelessness among hospitalized patients: A point-in-time survey. J Hosp Med. 2024 Jan;19(1):45-50. doi: 10.1002/jhm.13241. Epub 2023 Dec 6. PMID: 38058085.