

# IHQSE Clinical Effectiveness & Patient Safety (CEPS) Grant

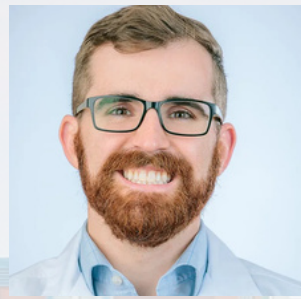
## Children's Hospital Colorado 2025 Awardees



**Hai Nguyen-Tran, MD**  
Implementing standardized medical screening and care for newcomer populations



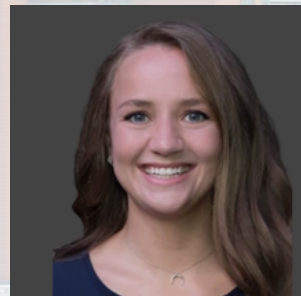
**Leigh Anne Bakel, MD, MSc**  
Better outcomes for patients cared for within clinical pathways and the clinical pathways program



**Cameron Baldes, MD**  
Optimization of administration of vaccinations for patients with increased risk for infection at a tertiary sickle cell center



**Julie Luna Torres, MD**  
Bridging the Digital Divide: Development and implementation of Spanish-language MyChart resources for pediatric gastroenterology families



**Anneliese Grewing, DO**  
Mitigating pediatric delirium in the intensive care unit



**Amy Willis, MD | Jessica Armijo, DNP**  
Improving the Culture of Communication at CHCO: Clear and efficient acute care secure chat use



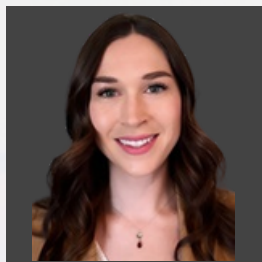
**Gee Mei Tan, MD | Jennifer Staab**  
Perioperative adaptive care team (PACT) and the patient's perioperative journey





# IHQSE Clinical Effectiveness & Patient Safety (CEPS) Grant

## UHealth 2025 Awardees



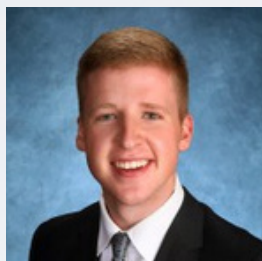
### **Corinne Camp, MD**

Leveraging the electronic health record (EHR) to support de-implementation of low value surveillance colonoscopy in older adults.



### **Anusha Raja, MD, MBA**

TB or Not TB: Improving pulmonary tuberculosis sputum collection at UCH



### **Ben Haerther, PA-C**

Facilitating Complex Discharge: Reducing time to home oxygen evaluation



### **Jacob Lebin, MD**

Using clinical decision support to improve alcohol use disorder care in hospitalized patients



### **Kristine Erlandson, MD**

Maximizing Medicare wellness visits in the infectious diseases clinic



### **Danielle Cooke, PhD |**

### **Sarah Nagle-Yang, MD**

Development and deployment of clinical decision support for suicide evaluation and intervention in the Department of Psychiatry's community practices



### **Dora Cheung, PharmD |**

### **Katie Raffel, MD**

Development of a steroid-induced hyperglycemia (SIHG) order set to enhance glycemic management in hospitalized patients receiving systemic steroids



### **Elizabeth Bloemen, MD, MPH |**

### **Sarah Tietz, MD**

Improving Care for Victims: A stepped model for elder abuse teams (VESPA-Step)

