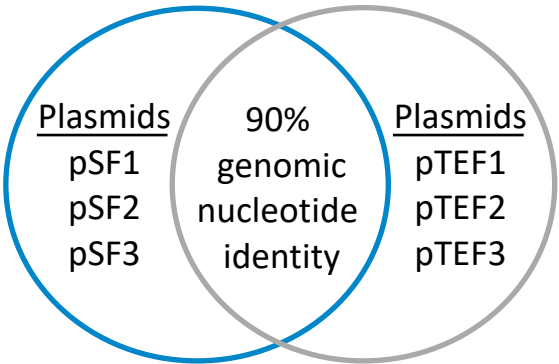
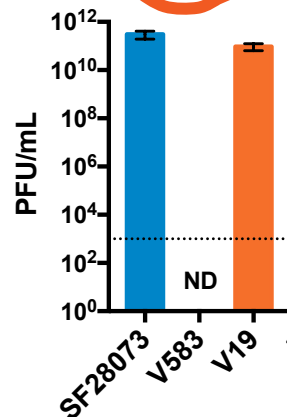
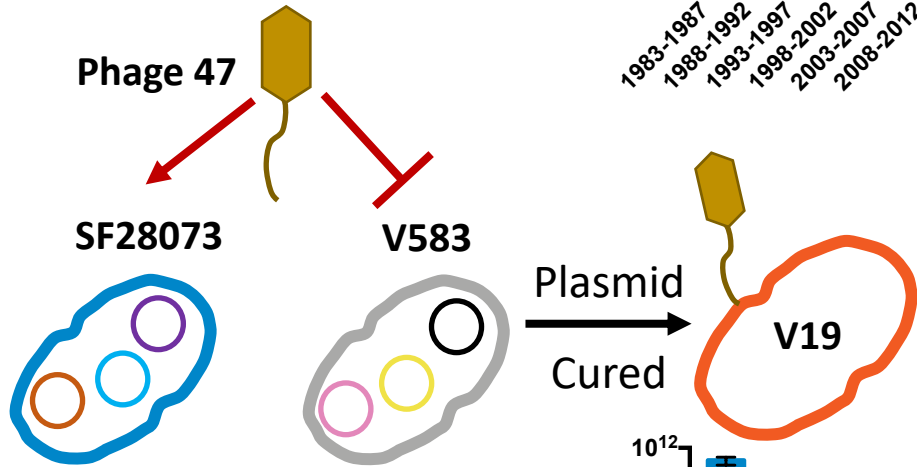
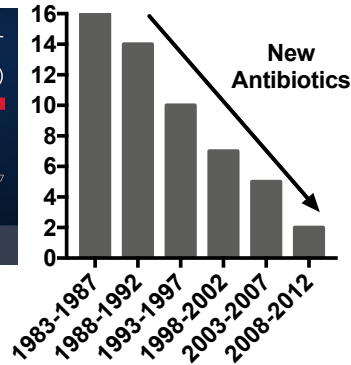
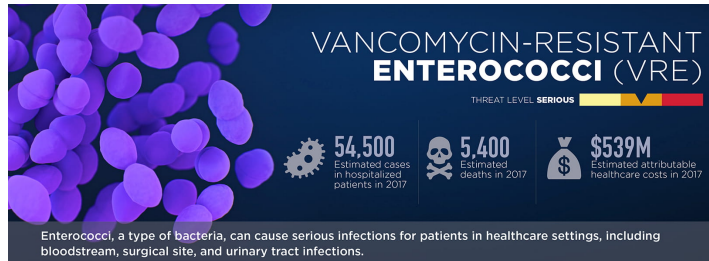


Plasmid carriage restricts lytic phage infection of *Enterococcus faecalis*

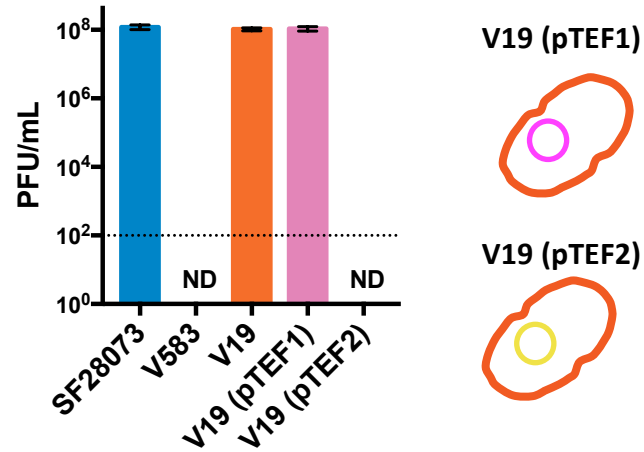
Cydney N. Johnson and Breck A. Duerkop. Department of Immunology and Microbiology, University of Colorado School of Medicine, Aurora, CO.



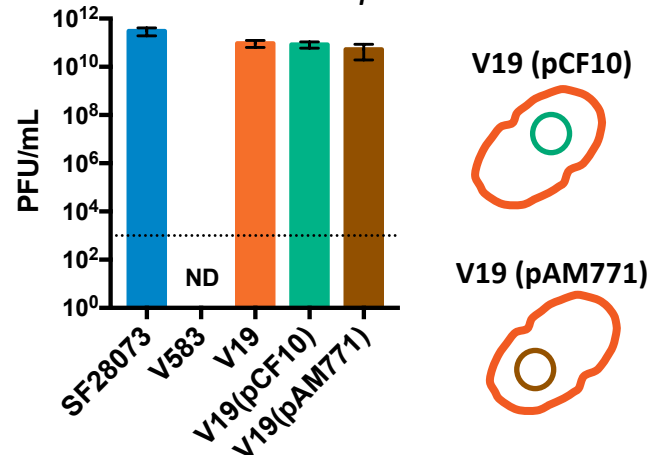
We hypothesize that 1 or more pTEF plasmid(s) encode anti-phage genes.

Is phage 47 resistance pTEF specific?

pTEF2 is sufficient to block phage 47 infection in V19.

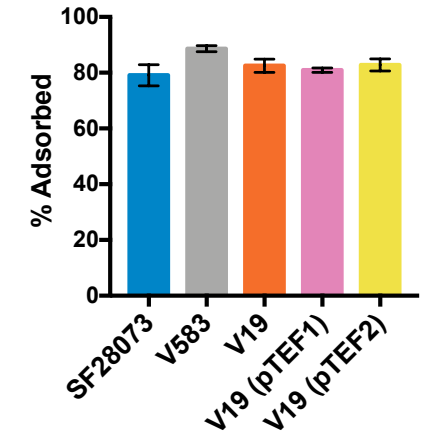


Phage 47 resistance is not generalizable to mobile plasmids.



How does pTEF2 prevent phage 47 infection?

pTEF2 does not prevent phage 47 adsorption to E. faecalis.



Future Directions

- Identify causative gene(s)
- Characterize mechanism
- Understand breadth of mechanism

What impact will an anti-phage, plasmid encoded mechanism have on phage therapy?



@cydneyjohnson_
@DuerkopLab