

MAY 2021 ISSUE

Curriculum Reform Newsletter

WE WANT YOU: FACULTY ENGAGEMENT
IN THE NEW TREK CURRICULUM



University of Colorado
Anschutz Medical Campus



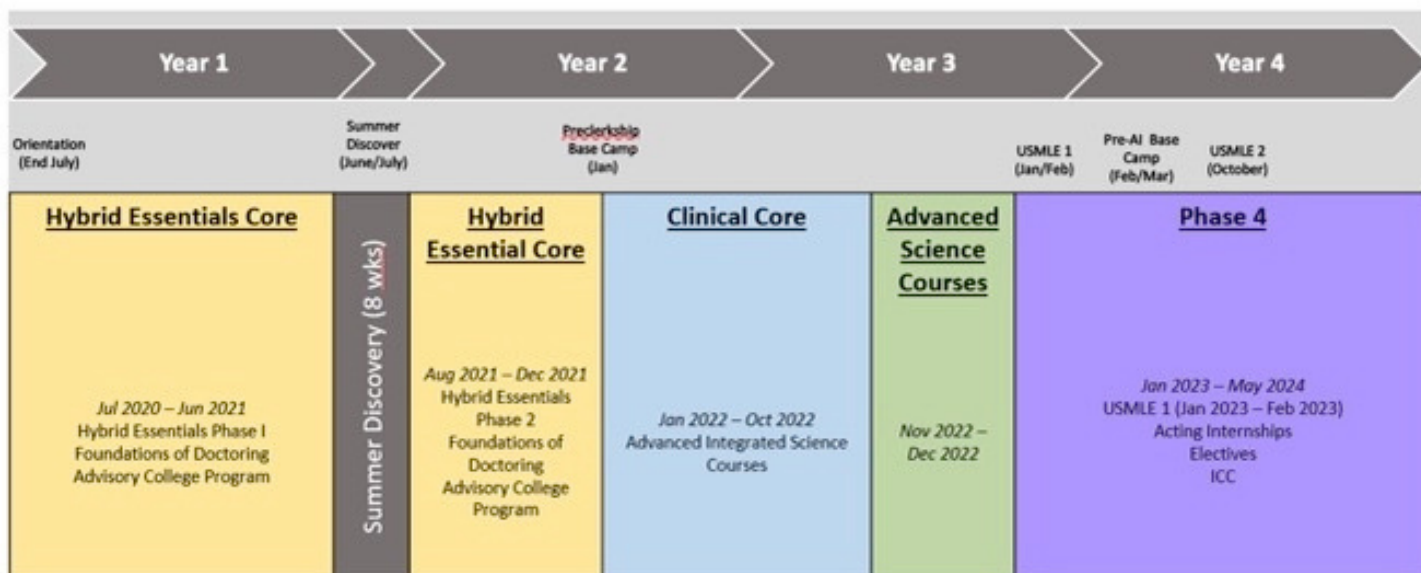
We are currently transitioning from the Legacy medical student curriculum through the Hybrid curriculum to the Trek Curriculum.

- The Class of 2023 (just starting MS3 year) will be the last class to complete the Legacy curriculum.
- The Class of 2024 (just finishing MS1 year) are in the Hybrid curriculum and will start their Core Clerkships in January 2022.
 - See *Hybrid timeline graphic on page 3.*
- The Class of 2025 will start at CUSOM in July 2021 in the Trek curriculum.

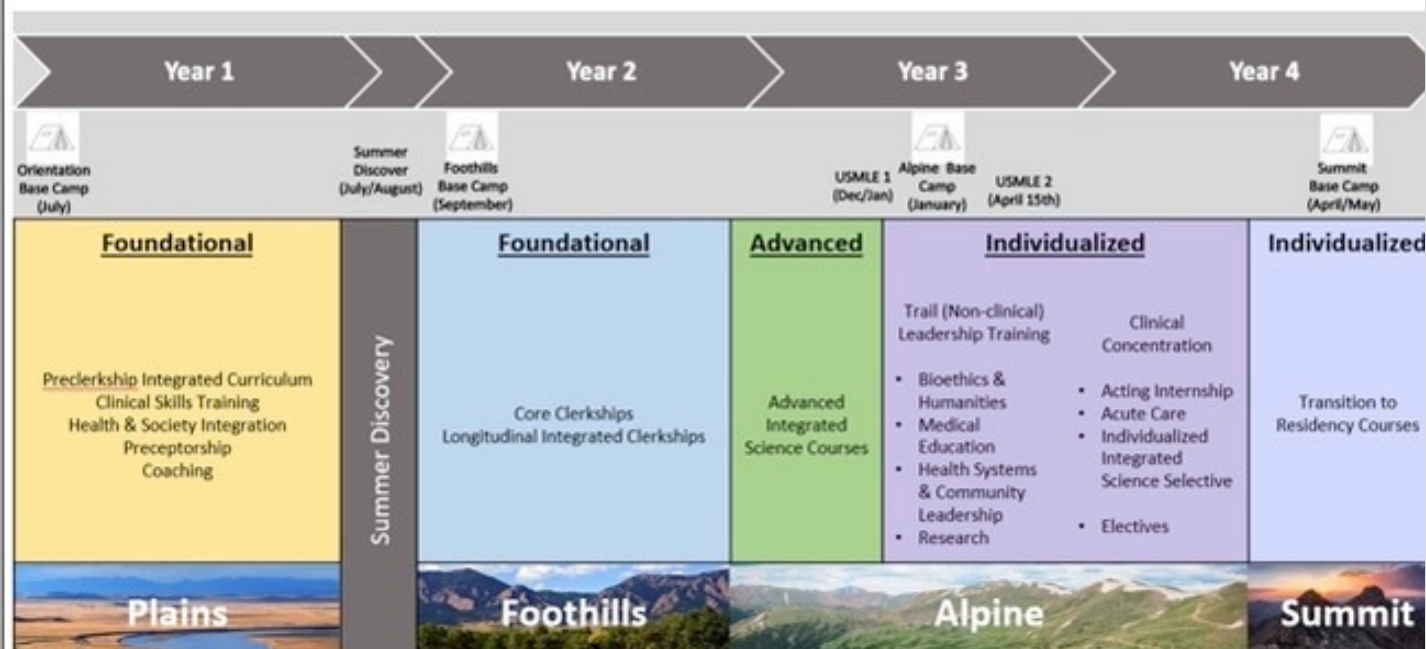


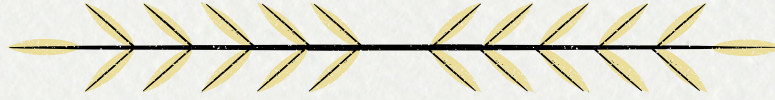


CUSOM Hybrid Curriculum



CUSOM Trek Curriculum





We are grateful to the hundreds of faculty, students and staff who have contributed to committee work, course design, assessment planning and the logistics of implementing a project of this size and scope!

THANK
YOU

This Month We Wanted To:

- Outline upcoming occasions for faculty to learn more details about the new curriculum
- Highlight opportunities for faculty to become further engaged in working with our students
- Congratulate and welcome faculty into new curricular leadership positions





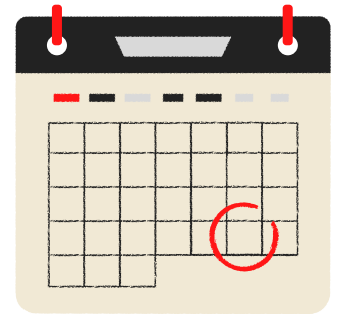
University of Colorado **Anschutz Medical Campus**

SAVE THE DATE

Trek Curriculum Faculty Mini-Retreat

We invite you to celebrate with us
and learn about the new
curriculum by attending one of
these two dates.

June 23, 2021 or July 8, 2021
at - 8:00am - 12:00pm



The mini-retreat will provide updates on the new curriculum, describe additional opportunities for faculty to engage with students, and provide faculty development for those that will be working with students in Trek.

These sessions are particularly important to all of you who will be teaching and working in the new curriculum but also will be of interest to many members of our community who are proud of our institutional development as a leader in medical education with a focus on improving the outcomes of the communities we serve.



Teaching Opportunities

SIGN UP HERE

(Or at the bottom of the descriptions)

Lecture in the first year curriculum

We seek interactive lecturers on topics of the basic medical sciences. Course directors will contact you about specific lecture dates and times. Each interactive lecture is 50 minutes and may be team taught.

Lab teaching in the first year

Our curriculum includes laboratory sessions in the basic medical sciences including pathology. These sessions typically run for 2-4 hours in an afternoon. Course directors will contact you about specific lecture dates and times.

Preceptorship

First year medical students need to practice their clinical skills and learn health systems science in the inpatient and outpatient clinical settings. We are seeking volunteer preceptors to host students in clinical sessions. The time commitment is 10 required half-day sessions with the student you are matched with. These sessions are dispersed over the year (4 in the fall, 4 in the spring, and 2 in the summer).

Clinical Skills Teaching

Classroom and simulation based teaching during the first year and later clinical years is available for interested faculty and residents. Most instruction occurs in small groups and sometimes includes standardized patient interviews and exam sessions. Topics include communication, physical exam and clinical reasoning. Training is provided for teachers and each session typically runs for ½ day. Teachers may sign up for multiple sessions throughout the year.

Communications Coaching

Small group and individual communications, interviewing, history taking sessions are facilitated by individual faculty or faculty pairs. Facilitator training will be provided. Both foundational and advanced coaching opportunities are available. Faculty with communications experience needed, including those with expertise in social work, motivational interviewing, psychology. Training is provided for teachers and each session typically runs for ½ day. Teachers may sign up for multiple sessions throughout the year.

Co-teaching small groups Health and Society

This health systems science curriculum includes small group sessions most Wednesday afternoons during the first year of medical school wherein groups of 8-10 students meet with one facilitator for 30 sessions that each last 2 hours. Cases are designed to improve skills in clinical reasoning, communication of medical information, self-directed learning and research strategies to answer clinical questions. Groups also discuss how ethics, professionalism, cultural differences, and medical systems affect the care delivered to patients. We seek facilitators who are willing to join current small group teachers in sessions of specialty or content interest. Interested faculty will receive just in time faculty development for the upcoming sessions and may sign up for one or multiple sessions throughout the year.



Teaching Opportunities

[SIGN UP HERE](#)

(Or at the bottom of the descriptions)

Co-teaching basic science small groups

All of our first year courses will include small group sessions in areas of the basic medical sciences. Many of these will be case based. We seek basic scientists, graduate students and clinicians to co-facilitate these small group sessions. Just in time faculty, development will be provided. Time commitment may be as little as 2 hours. Training is provided for teachers and may sign up for multiple sessions throughout the year.

Campus-wide Interprofessional Education

Interprofessional Healthcare Ethics/Health Equity (IPHE) in the Fall semester, and Interprofessional Collaborative Practice (IPCP) in the Spring semester are required courses for all first-year students in the schools of dental medicine, medicine, nursing, pharmacy, physical therapy, and physician assistant programs on campus. IPHE faculty facilitate interprofessional learning in teams through discussions, clinical cases, and debates. IPCP faculty coach interprofessional teams to develop essential communication skills and processes for teaming simultaneously and sequentially (i.e. handoffs). Teams will use individual and team feedback to promote collaborative practice improvement.

Mentored Scholarly Activity (MSA) Faculty.

All CUSOM students are required to complete a longitudinal scholarly project with a faculty mentor. The goal of the MSA curriculum is to foster self-directed, life-long learning and scholarship over the course of the medical student's career. The MSA requires students to identify and work with a mentor to complete scholarly projects in disciplines ranging from the basic sciences to clinical research to public health to education evaluations to the humanities. The MSA experiences also prepare students for working with mentors later in their careers and serving as mentors to others in the medical profession.

Teaching clinically in the LICs

All CU medical students will participate in Longitudinal Integrated Clerkships (LICs) during their second year in the Trek curriculum. LICs match students with longitudinal faculty preceptors in each of the core specialties (internal medicine, family medicine, pediatrics, surgery, obstetrics & gynecology, psychiatry and emergency medicine) with whom they work with repeatedly over the course of the entire clerkship year. Clinical faculty are needed to teach in this model working with students approximately one half day per week

Advanced clinical skills coaching

For students in clinical rotations, advanced clinical skills coaching and remediation is sometimes required. Clinical faculty will work one on one with students to improve clinical skills including oral presentations, clinical reasoning and advanced physical exam. Clerkship directors will contact faculty for ad hoc work with individual students.

Admissions committee members and interviewers.

Interviewers are needed for the admissions process including group and one on one interviews.



Teaching Opportunities

[SIGN UP HERE](#)

(Or at the bottom of the descriptions)

Research Day Judges needed

Annually, faculty judges from all disciplines are needed to provide detailed feedback to student research presentations, including basic, clinical, educational and other health systems sciences.

Science consultations

In the Trek curriculum, basic sciences are integrated throughout the four years of medical school. During the clinical years, we seek faculty from basic sciences to serve as scientific consultants as students revisit science in the setting of clinical care.

Examples of required effort would be review of relevant literature with the student and discussion of implications of novel discoveries on clinical medicine. Please note area of greatest interest/expertise.

Train the Trainer

Faculty development sessions in areas of expertise, ie what would you be good at teaching your peers to teach. This can include educational topics such as feedback, mentorship, direct observation or clinical and scientific expertise, including preparation for basic science small group sessions.

Advanced Clinical Expertise

We welcome faculty with interest in sharing patient interviews with students to volunteer to discuss specialized topics with the class. Examples include interviewing a patient in front of the class or facilitating a panel in your area of expertise. Course directors will contact you directly for particular sessions.

DAWN Clinic Preceptor (All years)

DAWN clinic is an interprofessional student run free clinic in Original Aurora dedicated to Aurora's uninsured population. The primary medical clinic runs on Tuesday evenings and combines medical providers, physical therapy, pharmacy, nursing, dental, and behavioral health along with 40-50 students each week. Family medicine preceptors are GREATLY needed and free medical liability insurance is available.

Hidden Curriculum Small Group Facilitator

Description: Series of small group sessions with a set group of clinical students who meet to reflect upon both the positive and negative things they are learning during their clinical experiences that are not a formal part of the curriculum. The purpose of these sessions is to inspire students as well as to provide a safe environment for sharing & reflection about their clinical clerkship experiences.



Teaching Opportunities

[**SIGN UP HERE**](#)

(Or at the bottom of the descriptions)

Facilitator for Clinical Ultrasound Skills

Small groups of students will learn focused Clinical Ultrasound exams during Plains. Facilitators will help guide the students through the Clinical Ultrasound exams and answer questions. Facilitators should be comfortable with performing and interpreting Clinical Ultrasound Exams. Sessions will be focused and facilitators are not required to be knowledgeable in all exams. I.e, Cardiovascular or Abdomen focused sessions. Each session is typically four hours in length and Facilitators may sign up for one or several throughout the year.

[**Sign up for a teaching or mentoring opportunity here**](#)



Electives for MS1s in the preclerkship, or Plains, phase of the Trek Curriculum

We are excited to announce a call for Course Proposals for Plains (1st year) Electives in the new Trek medical student curriculum. For the purposes of electives, the Plains year is divided into three, 12-week trimesters in which students can complete one elective per trimester. Following the completion of their first Trek curriculum unit and first set of tests, students who are in good standing will have the opportunity to complete one elective per trimester. Electives time is capped at 2 hours total (including both in-class and out-of-class, or prep, time) per week. Course proposal are being accepted now through June 1, 2021.

[**For more info about Trek Plains electives & to access the course proposal portal, click here**](#)





Congratulations to the Faculty Recently Accepted into Teaching and Leadership Roles

COMPASS GUIDE	Department
Timothy Bernard	Pediatrics & Neurology
Adria Boucharel	Anesthesia
Anjali Dhurandhar	Internal Medicine
John Frerichs	Surgery
Kelly Ground	Hospice and Palliative Medicine
Christopher King	Hospital Medicine
Leana May Moser	Pediatric Emergency Medicine
Katherine Morrison	Palliative Medicine Inpatient Service
Josina O'Connell	Family Medicine
Mike Overbeck	Emergency Medicine
Cleveland Piggott	Family Medicine
Anuja Riles	Pediatric Hospital Medicine
Hayley Ringwood	Family Medicine
Maurice Scott	Internal Medicine
Alison Shmerling	Family Medicine
Hilary Stempel	General Pediatrics
Brad Sterns	OB/GYN
Chelsea Wolf	Adult Inpatient Psychiatry
Brian Wolfe	Hospital Medicine





Congratulations to the Faculty Recently Accepted into Teaching and Leadership Roles

DOCS Coach	Department
Aubrey Armento	Orthopedics
Juri Boguniewicz	Pediatrics-Infectious Diseases
Rachel Clopton	Anesthesiology
Henry Colangelo	Family Medicine
Bryn Gonzales	Pediatrics
Mary Heyrosa	Surgery
Phillip Hitchcock	Medicine-Internal Medicine
Julia Hudnut-Beumler	Pediatrics-Tch Pediatric Hospitalist
Jessica Jack	Pediatrics
Kristin Jensen	Pediatrics-General Pediatrics
Melissa Johnson	Family Medicine
Shannon Langner	Family Medicine
Jia Liu	Medicine-Hospital Medicine
Steven Lowenstein	Emergency Medicine
Laura Macke	Medicine-Internal Medicine
Laura Marrs	Pediatrics-Neonatology
Anna Munoa	Medicine-Hospital Medicine
Marina Mutter	Medicine-Hospital Medicine
Susan (Michelle) Nikels	Medicine-Internal Medicine
George Olsen	Family Medicine
Hayley Ross	Pediatrics-Emergency Med/Urgent Care/NOC
Hana Smith	Pediatrics-General Pediatrics
Emily Spencer	Family Medicine
Suzanne Stamm	Family Medicine
Jennifer Stichman	Medicine-Rheumatology
Erik Wallace	Medicine-Internal Medicine
Kelly White	Medicine-Internal Medicine
Joann Zell	Medicine-Rheumatology

