

Maternal Fetal Outcomes in Family Medicine Obstetrics Delivered Patients: An Initial Data



University of Colorado
Anschutz Medical Campus

Gathering Mission with Clinical Comparisons

Erika Hancock MS4, Jennifer Caragol MD

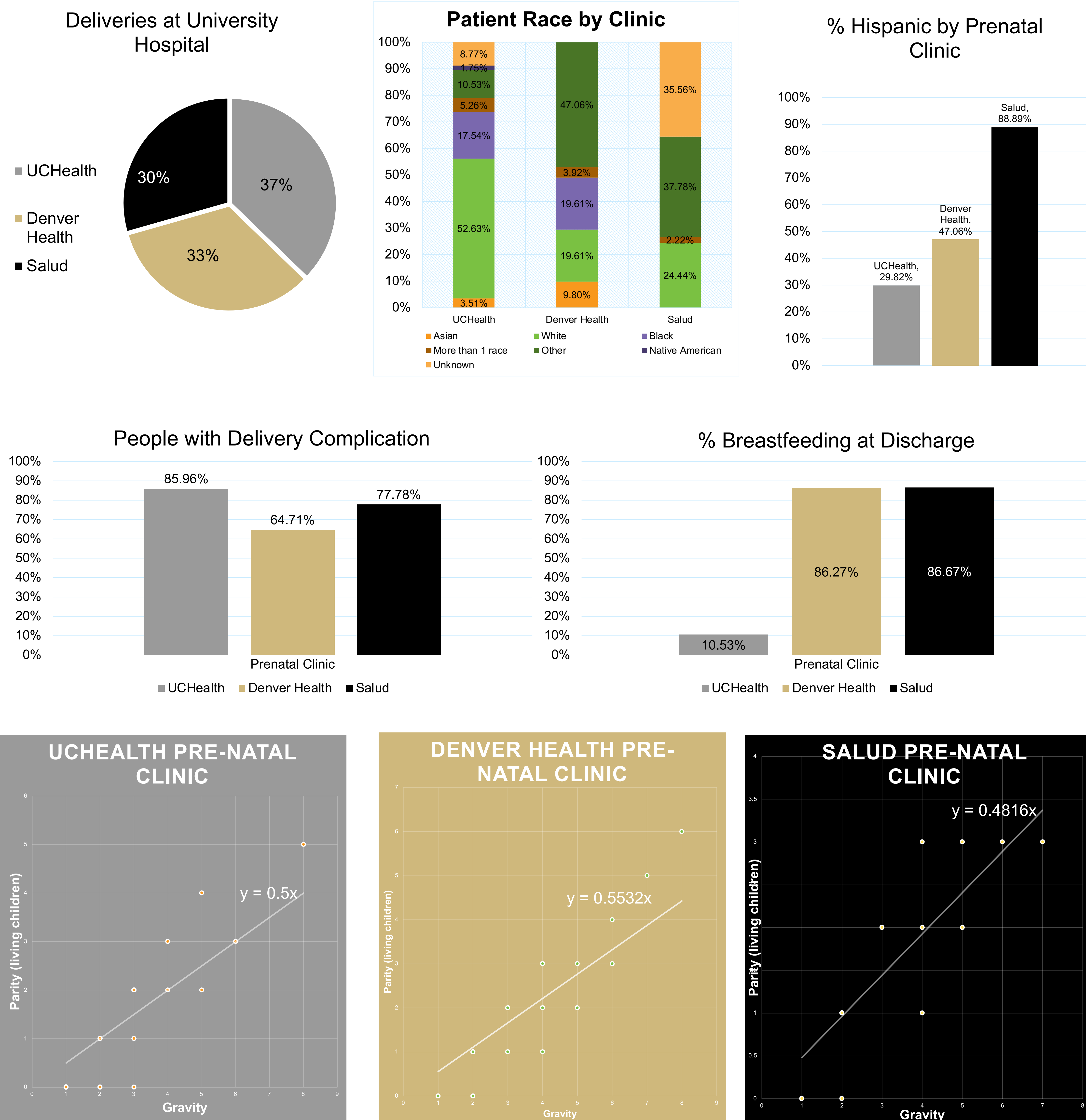
Background

- There is a growing shortage of Obstetrics care in the United States^{1,2}
- Family Medicine (FM) doctors are uniquely positioned to help bridge this gap, especially in rural settings
- Obstetrics is a required part of FM training, although few continue OB after graduation^{3,4}
- Residents are more likely to continue OB if they have high-volume and complex cases during residency⁵

Methods

- We performed a retrospective study on obstetrics patients delivered by Family Medicine residents at the University of Colorado Anschutz Hospital to determine if CUFMR adequately prepares residents for OB training by looking at the medical complexity and ethnicity of patients seen.
- Epic was used to generate a report of FM delivered patients at CU Anschutz in the year 2023. This was cross referenced with prenatal records at clinics served by the CU Family Medicine residency: AF Williams, Salud, Denver Health, and UHealth Westminster
- Demographic data, including age, race, nationality, were recorded
- Pertinent prenatal diagnoses (e.g. elevated LFT's, +GBS, amniotic fluid abnormalities, mental health disorders, substance use, advanced maternal age) were noted
- Pertinent outcomes (e.g. primary Cesarean section, VBAC, SGA, LGA, hypertensive disorders, APGAR <5, shoulder dystocia, forceps delivery, vacuum delivery, elevated Edinburgh score, and NICU admission) were noted
- Time from delivery to first appointment after discharge was recorded for both delivering patient and baby
- Data was compared to Colorado State population data from 2023

Results



Conclusions

- Total of 153 deliveries
- Grossly even distribution of patients from the three prenatal clinics
- 52.9% of patients identified as Hispanic, which is greater than the CO population average of 22.75%
 - Salud provided most prenatal care to Hispanic patients
- Very diverse patient population across all three clinics
- Majority of patients had ≥ 1 prenatal diagnosis at time of admission
 - UHealth and Denver Health had majority ≥ 2 prenatal diagnoses
- Majority of patients had delivery complication(s)
- UHealth patients were least likely to be breastfeeding at discharge
- Denver Health patients tend to have the highest Gravity and Parity

Implications

- FM residents at the University of Colorado Anschutz Hospital see diverse and complex patients
 - More diverse than the general CO population
- The patients cared for by FM residents are high-complexity patients
- This residency provides high quality obstetrics training and appropriately prepares FM doctors to continue providing OB care to patients after graduation

Disclosures

- None

References

- Kurata JH, Werblun MN, Valenzuela G, Ziffer M, Kantor-Fish S, Richards E. Perinatal outcomes in obstetric and family medicine services in a county hospital. J Am Board Fam Pract. 1989 Apr-Jun;2(2):82-6. PMID: 2711888.
- Aubrey-Bassler K, Cullen RM, Simms A, Asghari S, Crane J, Wang PP, Godwin M. Outcomes of deliveries by family physicians or obstetricians: a population-based cohort study using an instrumental variable. CMAJ. 2015 Oct 20;187(15):1125-1132. doi: 10.1503/cmaj.141633. Epub 2015 Aug 24. PMID: 26303244; PMCID: PMC4610835.
- Accreditation Council for Graduate Medical Education (ACGME). (2024). ACGME Program requirements for graduate medical Education in Family Medicine. In ACGME Program Requirements for Graduate Medical Education in Family Medicine (pp. 2-63). https://www.acgme.org/globalassets/pfassets/programrequirements/2024-prs/120_familymedicine_2024.pdf
- Barreto, T., Peterson, L. E., Petterson, S., & Bazemore, A. W. (2017, June 15). Family physicians practicing High-Volume obstetric care have recently dropped by One-Half. AAFP.
- Cottrell A, Hamilton N, Murphy J, Walsh C, Hancock E, Hoss M, Beagle M, Caragol J. Society of Teachers of Family Medicine. Poster presented: Turn Up the Volume: A Post-Graduate Survey of the Advanced Maternity Care Concentration. Los Angeles, CA, United States of America; 05/06/2024.