



# Assessing medical students at CUSOM

Tai Lockspeiser, MD, MHPE

Assistant Dean of Assessment, Evaluation, and Outcomes

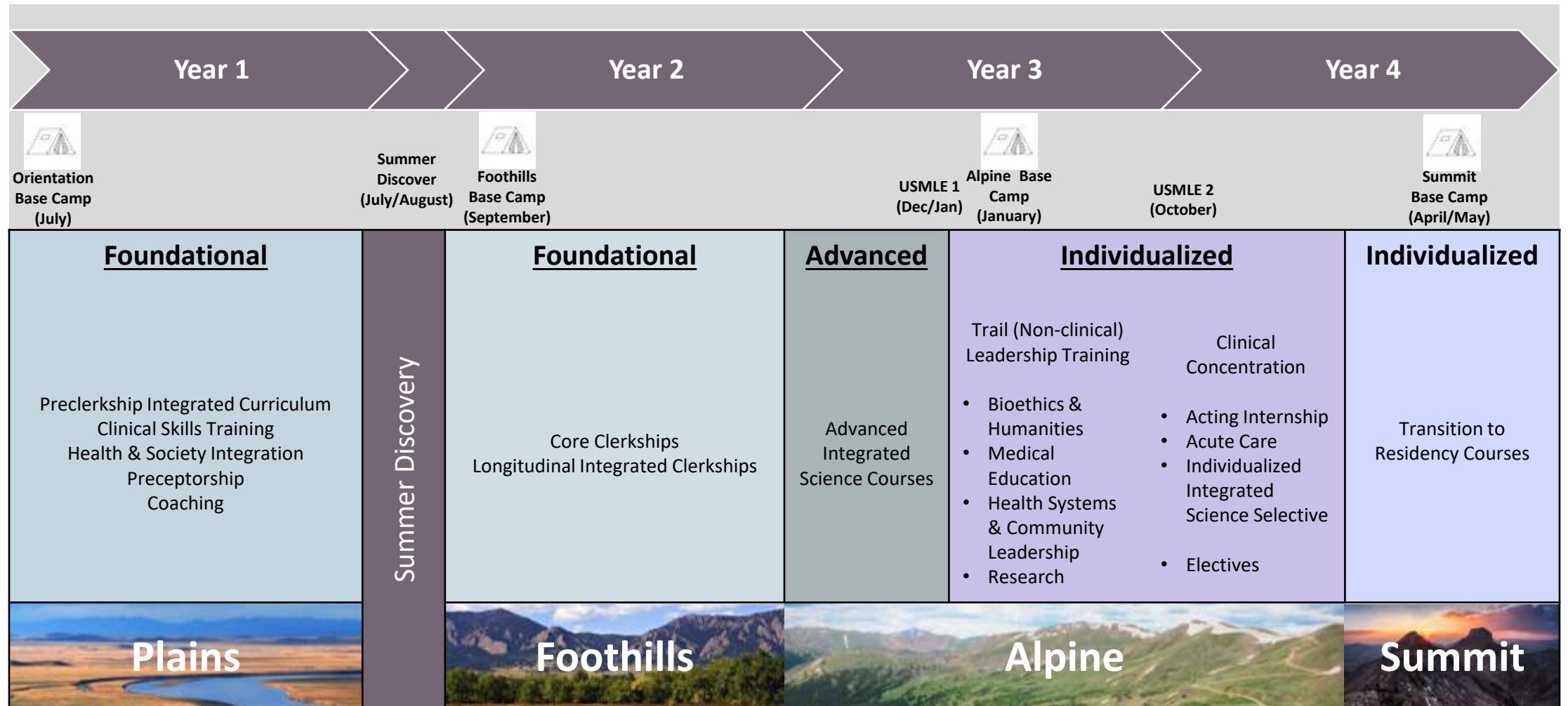


# What is the overall goal of clinical assessment?

---

To provide the student and the school with helpful information on the student's growth towards becoming an independent physician capable of providing safe and effective patient care.

# CUSOM Trek Curriculum



Summer Discovery

# Assessment Forms

- All assessment is done in Oasis
  - Be on the look out for emails from Oasis with direct links to the forms – no need to remember your login!

## OASIS NOTIFY: Email Reminders



o cuanschutz.som@oasisscheduling.com <cuanschutz.som@oasisscheduling.com>

To: o Lockspeiser, Tai

- All forms have two types of questions:
  - Ratings
  - Comment boxes

# What are the tasks that you will assess?

- Gather a **history** from a patient.
- Perform a **physical exam**.
- Develop a **differential diagnosis**.
- Provide **written documentation** of a clinical encounter.
- Provide an **oral presentation** of a clinical encounter.
- Develop a **management plan** (including selecting/interpreting tests and preventative care).

- Basic Technical skills
- Urgent/ Emergent care
- Organization/Prioritization
- Evidence-Based Medicine
- Professionalism
- Compassion
- Situational Awareness
- Advocacy
- Interprofessional Collaboration
- Self-directed learning/Agency



For a patient with a *common concern*, if you were to supervise this student again how would you assign the task to the student to *assure safe and effective patient care*?

- Let the student watch me do it
- Do it with the student together
- Let the student do it on their own and then repeat all findings or provide substantial input/revisions
- Let the student do it on their own and then repeat some findings or provide minimal input/revisions

# Common misconceptions about ratings



Billing rules do not apply!



Selecting that a student is very independent in the task does NOT mean they do not need teaching/feedback.

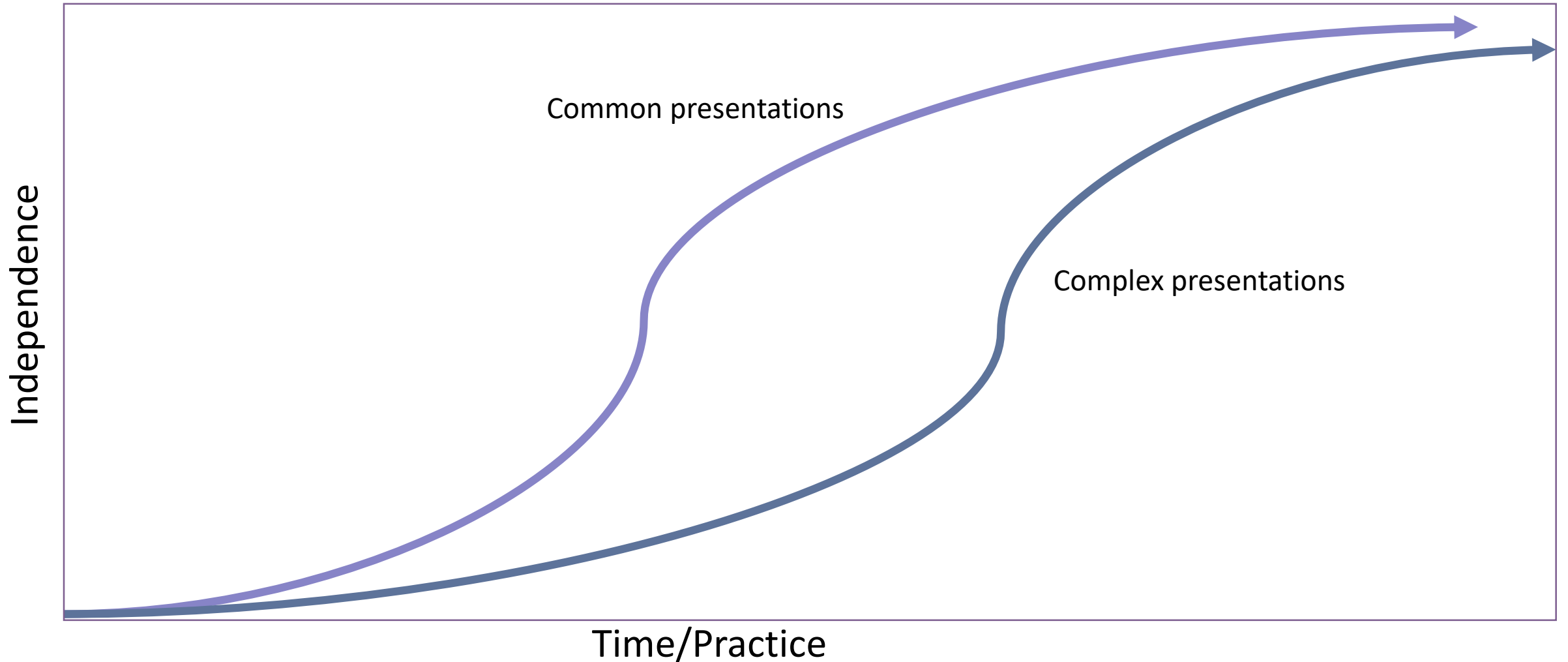


Asking for help and knowing your limits is part of being an independent clinician and not always a marker of a need for increased supervision.



The amount of supervision a student needs is different depending on the context/complexity of the patient.

# Independence in clinical care is context dependent





# Common vs Complex

## Common

- Single or a few uncomplicated concerns
- Routine problem
- Minimal intervention/orders/ follow-up needed
- Follow up care of a stable chronic condition

## Complex

- Multiple problems that may interact and require extensive clinical decision-making
- Extensive test/ referral/medication ordering
- Undifferentiated patient with unclear diagnosis
- Atypical presentations of common diagnoses
- Patients who need urgent/emergent care
- Decision-making heavily influenced by a complex social situation

# Suggestions for high quality feedback and narrative comments



Describe what the student did in detail with specific examples



Use verbs not adjectives



Avoid clichés – i.e. “he went above and beyond” – what does that mean?



Include specific reference to the activities we expect students to perform



Don't use comparative language



Describe what the learner can do to move to the next level

# Mitigating bias



Work to find common ground and similarities with all learners



## Practice Perspective taking

Imagine being the student who reads the feedback you wrote.  
Consider the difference between your intent and your impact.



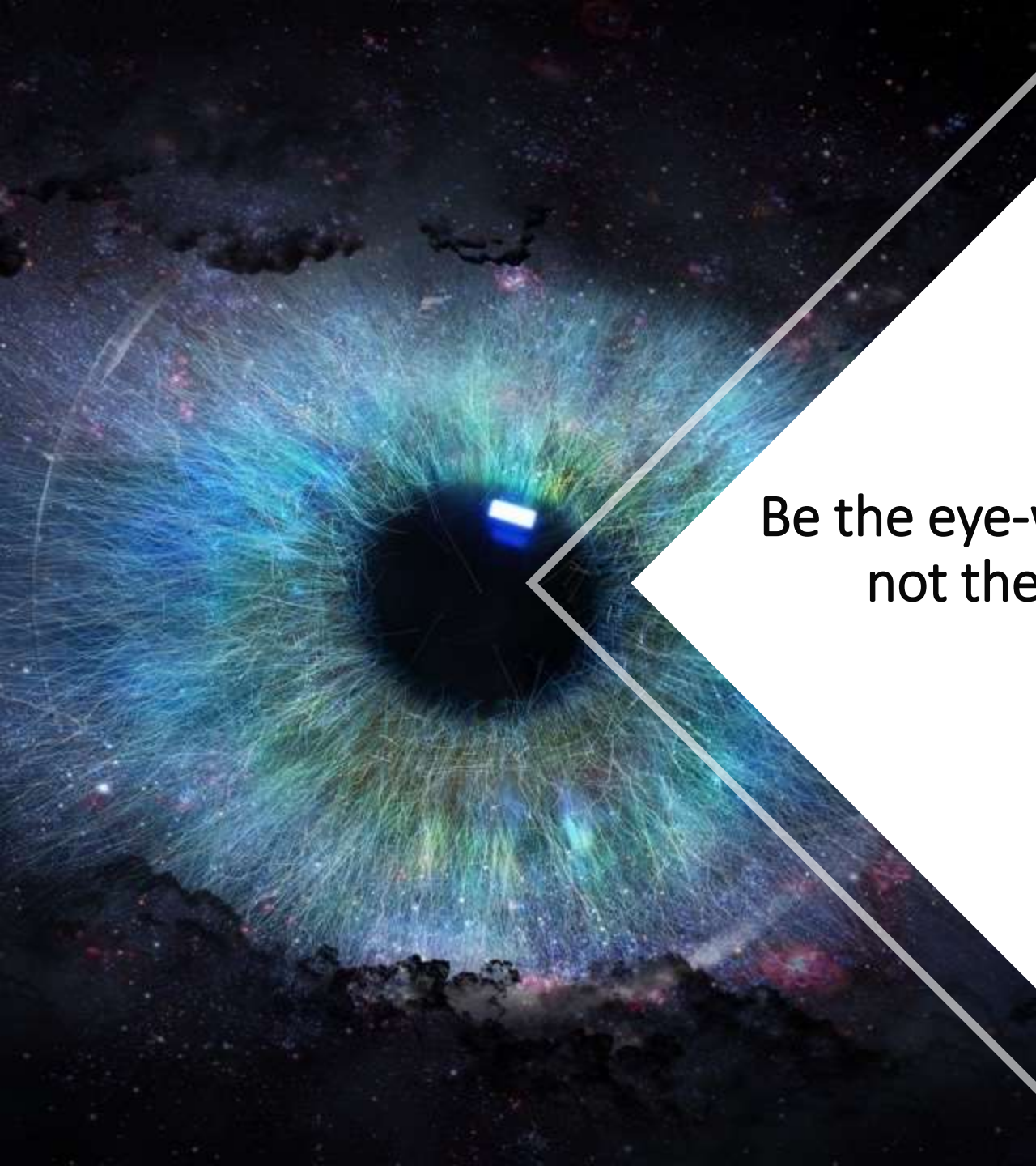
## Pause to think about if your biases are influencing your perceptions of someone else

*Would I have written the same thing if the student was a different gender or race?*



## Focus on behavioral observations

*Am I describing personal attributes of the student or how well they fit in, or am I describing the actual skills and knowledge they demonstrated during our time together?*



Be the eye-witness and  
not the judge!

Each assessment is another pixel to provide more detail







Always feel free  
to reach out with  
any questions!

- Tai Lockspeiser, MD, MHPE
- Assistant Dean of Assessment,  
Evaluation and Outcomes
- [Tai.Lockspeiser@cuanschutz.edu](mailto:Tai.Lockspeiser@cuanschutz.edu)