

dexcomG6[®]

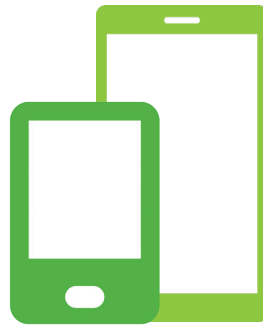
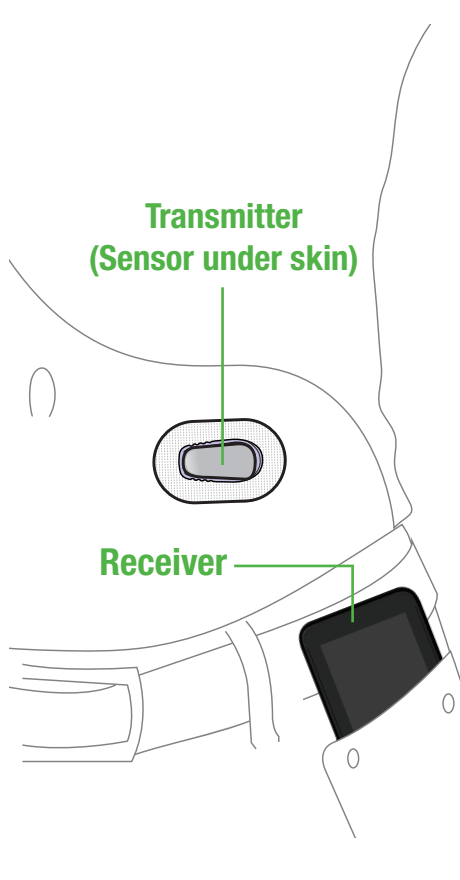
CONTINUOUS GLUCOSE MONITORING SYSTEM

RECEIVER AND APP SETUP



For video instructions: dexcom.com/training-videos

How Does the Dexcom G6 Work?



Receiver Smart Device* (optional)

- Displays a glucose reading every 5 minutes – up to 288 a day

*For a list of current compatible smart devices go to: dexcom.com/compatibility



Applicator With Built-in Sensor

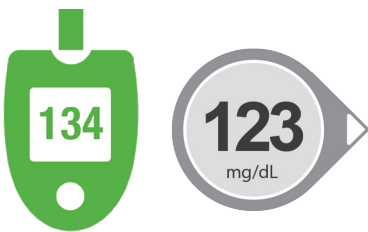
- Sensor applicator inserts sensor under your skin
- Sensor measures glucose levels for up to 10 days



Transmitter

- Sends glucose information from sensor to display device
- Reuse for 3 months

Accuracy and Calibration



Your BG meter and Dexcom G6 reading can both be accurate even when they differ. Each device has an accuracy range.

When a sensor code is entered, the G6 is a factory calibrated system and requires no manual calibrations.

Treatment Decisions

Use your meter if

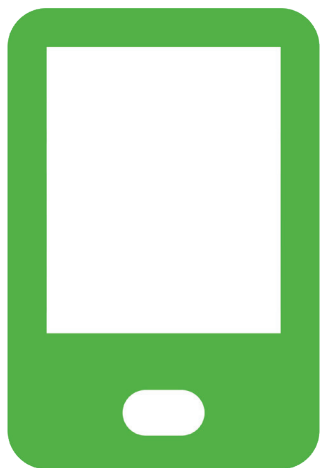
- Your G6 readings don't match your symptoms
- Your G6 doesn't show both a number and arrow

Resources

Contact Dexcom Care for individualized support or to register for free online webinars at:

- dexcom.com/dexcom-care
- Toll free: 1.888.738.3646
- Available Monday-Friday 6am–7pm and Saturday 6am–2:30pm PST (subject to change)

STEP 1: Set Up Receiver



Turn receiver on. Press and hold the power button for 2 seconds.

Set Date/Time

11 / 27 / 2017

11 : 02 AM

▲ ▼

Save

Enter date and time

Set Low Alert

80

mg/dL

▲ ▼

Save

Set Low Alert between 60-100 mg/dL

Set High Alert

200

mg/dL

▲ ▼

Save

Set High Alert between 120-400 mg/dL

Sensor Code

- - - -

▲ ▼

No Code

Save

Enter Sensor Code



Transmitter SN

- - - - -

▲ ▼

Save

Enter transmitter SN.



STEP 2: Insert Sensor and Attach Transmitter

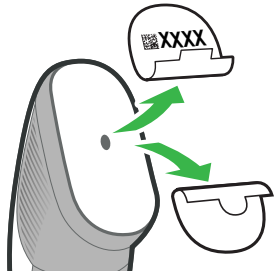
Choose an insertion site on the belly

- At least 3 inches from your insulin pump infusion set or injection site
- Avoid waistband and areas with scarring, tattoos, or irritation

Insert Sensor

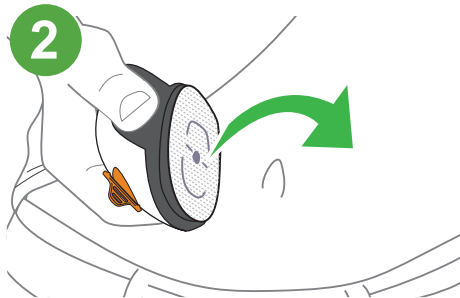
Before you begin, wash and dry your hands and clean sensor site with alcohol.

1



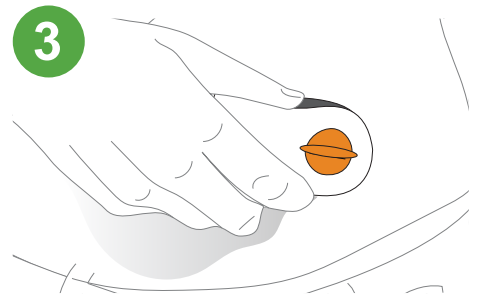
Remove both labels;
do not touch adhesive

2



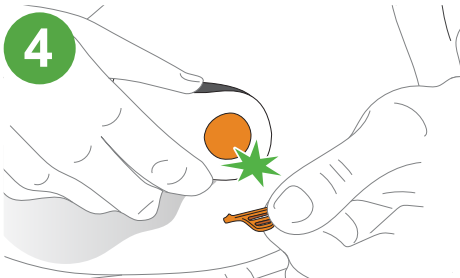
Move applicator to
sensor site

3



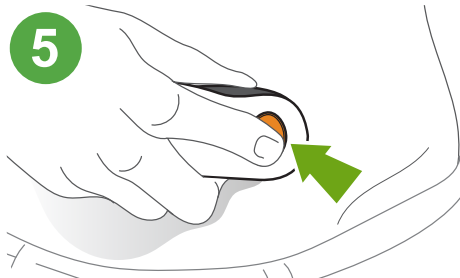
Place adhesive on skin

4



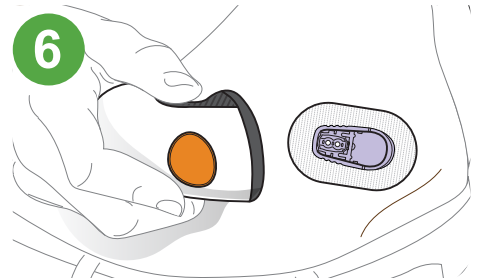
Fold and break off
safety guard

5



Press button to insert

6

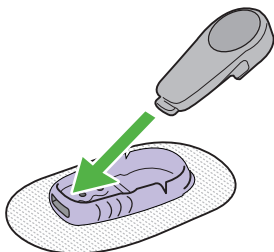


Discard applicator

Attach Transmitter

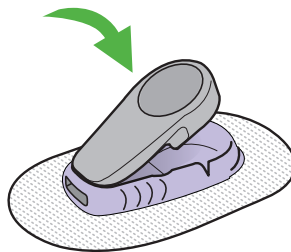
Before you begin, clean transmitter with alcohol.

1



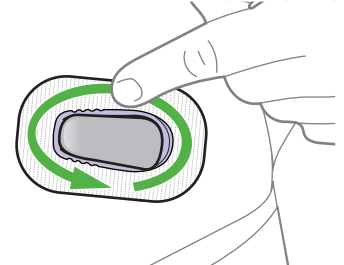
Insert transmitter tab
into slot

2



Snap transmitter firmly
into place

3



Rub around patch 3 times

STEP 3: Pair Transmitter and Start Sensor



Wait for your transmitter to pair



Tap Start Sensor to begin 2-hour warmup

- No readings during warmup
- Keep receiver within 20 feet during warmup

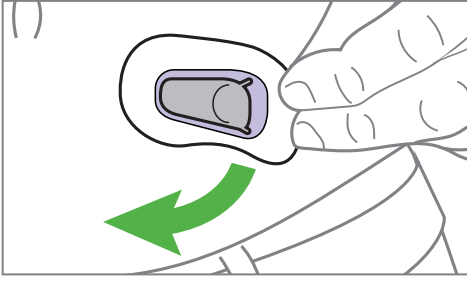
Home Screen and Trend Arrows

Your home screen shows your sensor glucose reading, trend graph, and trend arrow. Your trend arrow shows the direction and speed your glucose is heading.



	Increasing/decreasing less than 1 mg/dL each minute
	Glucose could increase/decrease 30-60 mg/dL in 30 minutes
	Glucose could increase/decrease 60-90 mg/dL in 30 minutes
	Glucose could increase/decrease more than 90 mg/dL in 30 minutes

DAY 10: End Sensor Session



The sensor automatically shuts off after 10 days. The receiver alerts you before your sensor session ends.

1. Peel sensor and transmitter off body
2. Remove transmitter from holder. KEEP TRANSMITTER.
3. Enter a new sensor code
4. Insert a new sensor and attach transmitter.
5. Start new sensor

OPTIONAL: Set up the Dexcom G6 app*



Download and open the Dexcom G6 app. For a list of compatible devices, visit dexcom.com/compatibility.

Your Dexcom Account

Sign in to manage your account.

Username *

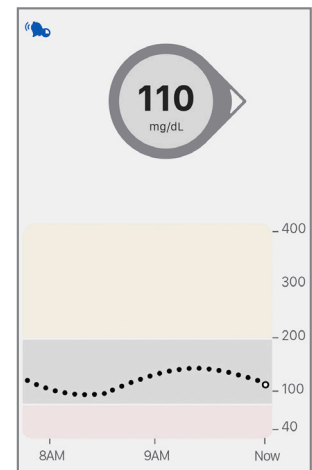
Password *

Login

[Forgot your Dexcom username or password?](#)

Need a Dexcom Account?

Create or log into your Dexcom account. For example, a Dexcom Clarity account if you have one.



The app walks you through entering Low and High Alerts, Sensor Code, and Transmitter SN. The app joins your current sensor session.

Dexcom Share®



Dexcom Share is a feature of the Dexcom G6 app. To set up Dexcom Share, press the Share icon and follow the instructions. The app walks you through inviting Followers. Your Followers will need to download the Dexcom Follow app.

*Medicare patients can use a compatible smart device in conjunction with their receiver.

This guide is for concept illustration only. All images are representational. For detailed step-by-step instructions on how to use the Dexcom G6 CGM System, please refer to the user guide. Find the user guide at: dexcom.com/guides

Failure to use the Dexcom G6 Continuous Glucose Monitoring System (G6) and its components according to the instructions for use provided with your device and available at <https://www.dexcom.com/safety-information> and to properly consider all indications, contraindications, warnings, precautions, and cautions in those instructions for use may result in you missing a severe hypoglycemia (low blood glucose) or hyperglycemia (high blood glucose) occurrence and/or making a treatment decision that may result in injury. If your glucose alerts and readings from the G6 do not match symptoms, use a blood glucose meter to make diabetes treatment decisions. Seek medical advice and attention when appropriate, including for any medical emergency.