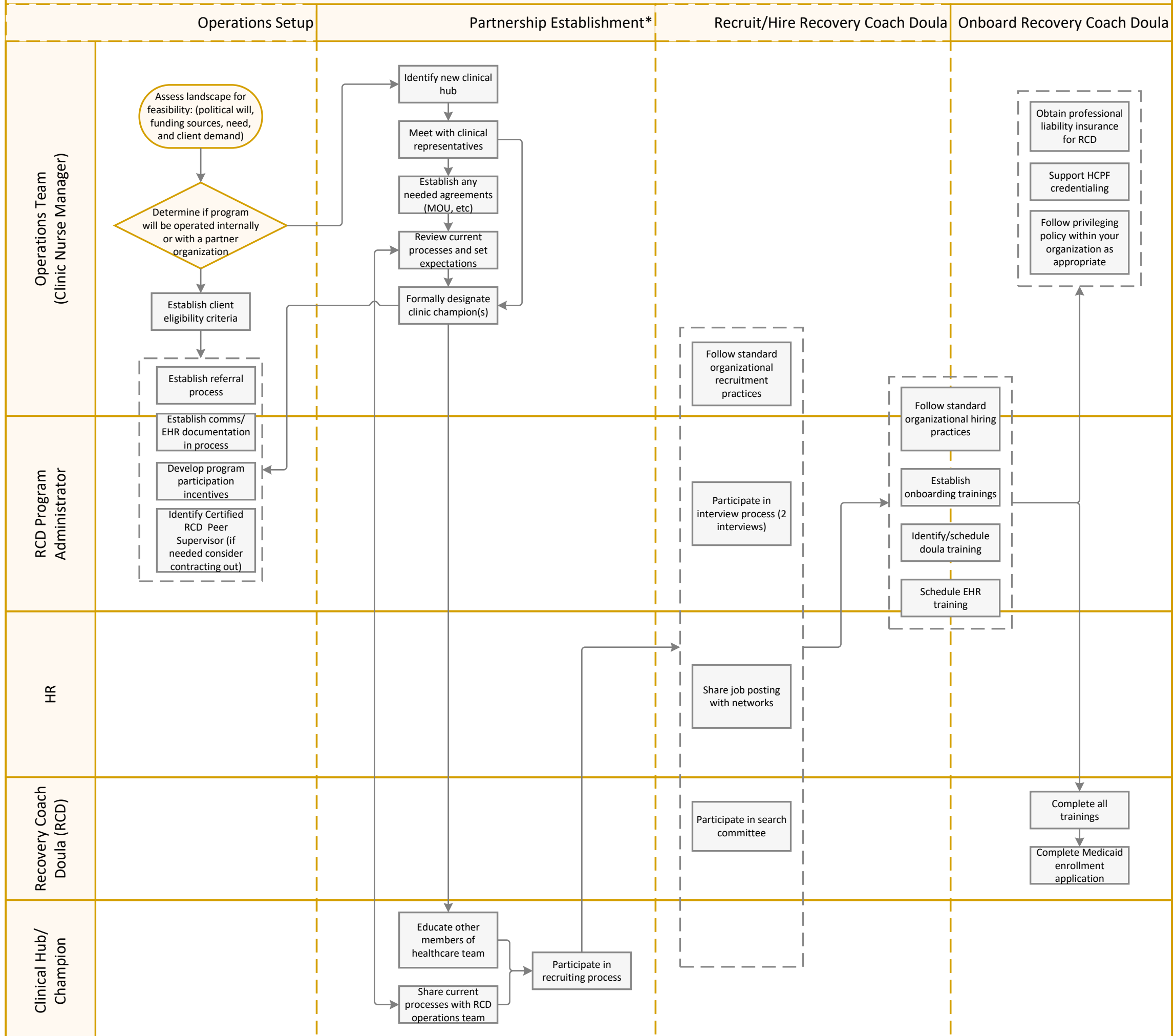


RCD Pre-Implementation Blueprint



*Several activities in this section may not be relevant, particularly if the program will be operated internally and will not engage external clinical partners.

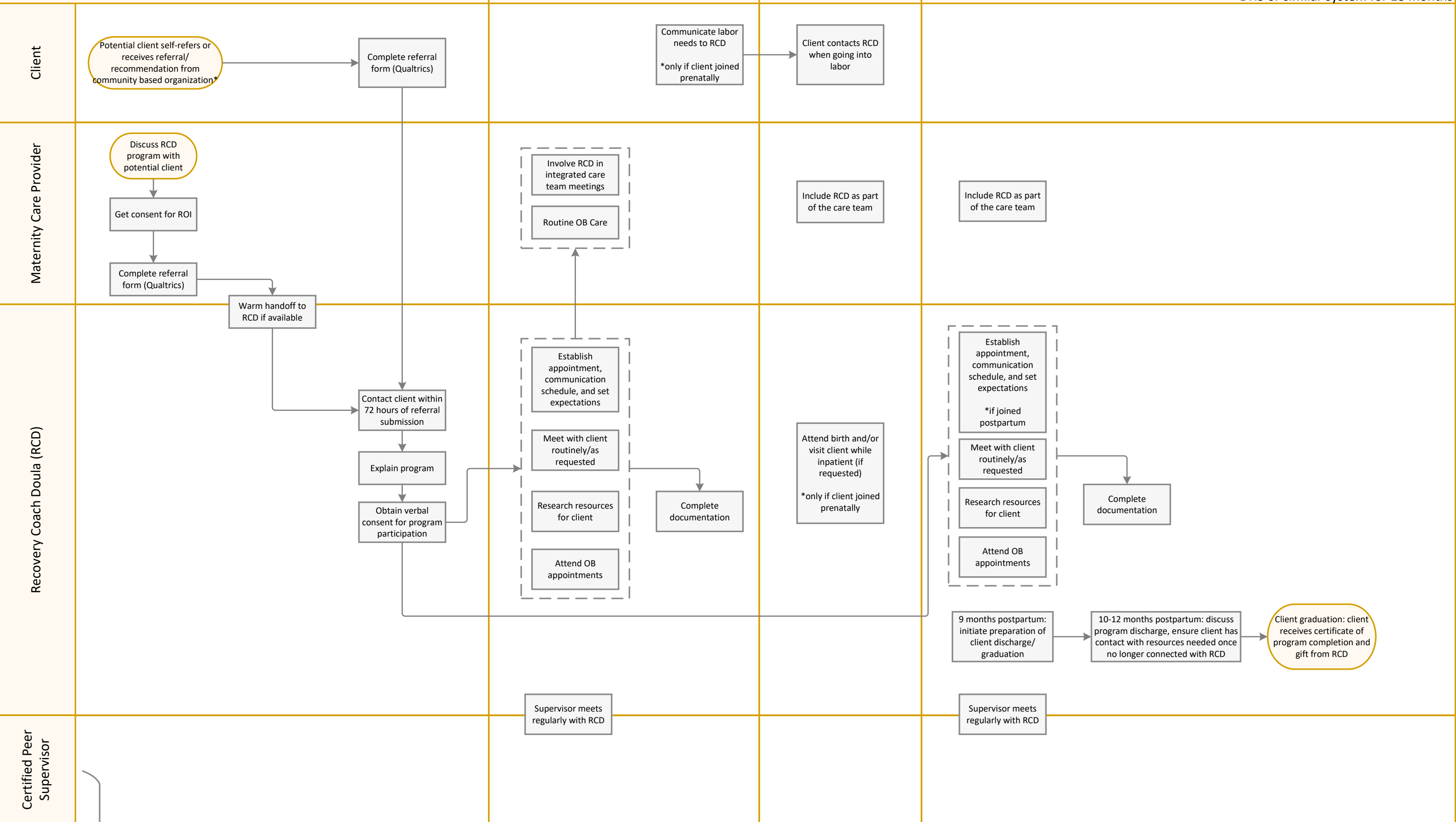
RCD Intervention Blueprint

Client Identification & Recruitment (These processes can happen prenatally, during labor, or postpartum)

Prenatal

Labor & Delivery Admission

Postpartum (up to 12 months)
*consider offering program for those involved in DHS or similar system for 18 months



**In some settings, it may be appropriate for these roles to be filled by the same person.

**The program administrator role is responsible for program management, staff coordination, program monitoring, and administrative operations (such as performance review, time off requests, and payroll).

*Community-based organizations may make direct referrals or provide prospective clients with the information to self-refer to the RCD program.