



# Nurse- Family Partnership

---

# Disclosure & Accreditation

## Disclosure Information

In accordance with disclosure policies of ASAM and Joint Accreditation, the effort is made to ensure balance, independence, objectivity, and scientific rigor in all CME/CE activities. These policies include mitigating all relevant financial relationships with ineligible companies for the Planning Committees and Presenters. All activity Planning Committee members and Presenters have disclosed all financial relationship information. The ASAM CE Committee has reviewed these disclosures and determined that the relationships are not inappropriate in the context of their respective presentations and are not inconsistent with the educational goals and integrity of the activity. **The planners, faculty and have no relevant financial relationships.**

## Accreditation & Credit Designation Statements

**Joint Accreditation Statement** In support of improving patient care, this activity has been planned and implemented by the University of Colorado and the American Society of Addiction Medicine. The American Society of Addiction Medicine is jointly accredited by the Accreditation Council for Continuing Medical Education (ACCME), the Accreditation Council for Pharmacy Education (ACPE), and the American Nurses Credentialing Center (ANCC), to provide continuing education for the healthcare team.

**Physicians** - The American Society of Addiction Medicine designates this live activity for a maximum of 5 AMA PRA Category 1 Credits™. Physicians should claim only the credit commensurate with the extent of their participation in the activity.

**Nurses** - This activity awards 5 Nursing contact hours.

**Social Workers** - As a Jointly Accredited Organization, ASAM is approved to offer social work continuing education by the Association of Social Work Boards (ASWB) Approved Continuing Education (ACE) program. Organizations, not individual courses, are approved under this program. Regulatory boards are the final authority on courses accepted for continuing education credit. Social workers completing this course receive 5 general continuing education credits.





# IMAGINE

---

**Nurse-Family Partnership® is an evidence-based, community health program with over 45 years of evidence showing significant improvements in the health and lives of first-time parents and their children living in poverty.**

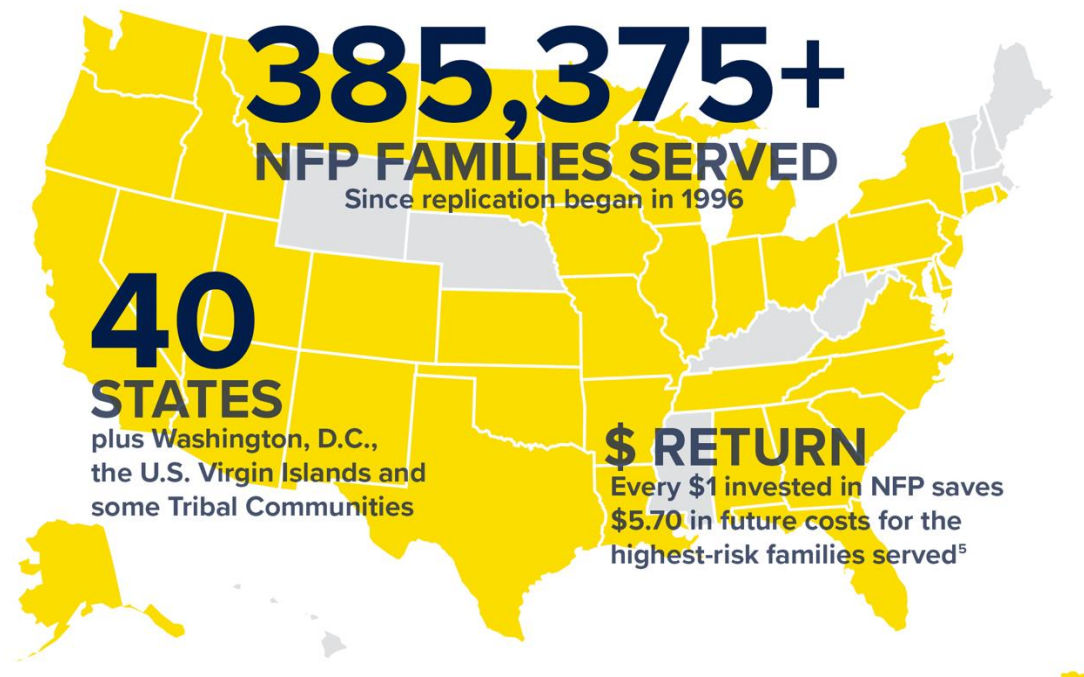


**INVEST  
IN KIDS®**



## **NFP's KEY GOALS**

- **Improve Pregnancy Outcomes**
- **Improve Child Health and Development**
- **Improve Economic Self-Sufficiency of the Family**





# HOW IT HAPPENS

---

Voluntary enrollment of first-time, low-income mothers

In-home visitation with a long-term program duration

Delivery by highly-trained, registered nurses.

Nurses develop close, trusting relationships with the mother and her child.

Strengths-based



---

# BETTER WORLDS START WITH GREAT MOTHERS.



AND GREAT MOTHERS START WITH US.







## Who To Refer

- **First-time expectant parents prior to 28 weeks of pregnancy**
- **Parent-to-be who is experiencing low-income (Medicaid or WIC eligible)**
- **An expectant parent who has not had the benefit of a college education (no college degree)**
- **IPV, Mental Health, Substance Abuse, Unhoused etc.**





## How to place a referral to NFP

- **One Universal form**
- **NFP Metro Denver Referral Form**





# Q and A

Questions?

- Contact Kimberly Hirst at [khirst@iik.org](mailto:khirst@iik.org)  
or 720-865-6236

