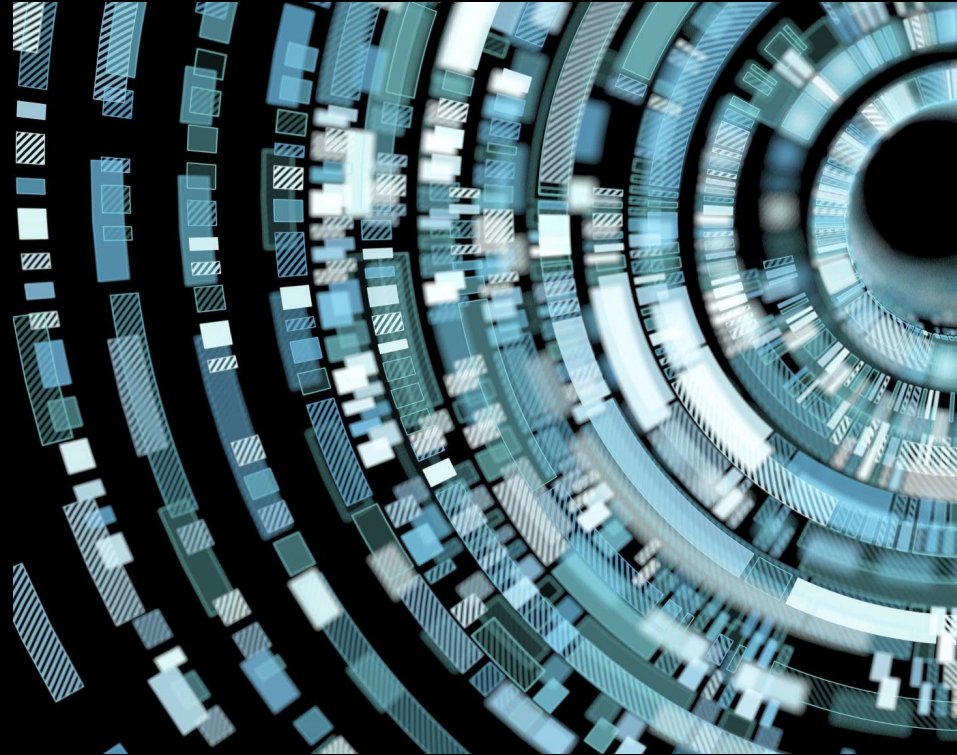


DEI&CE

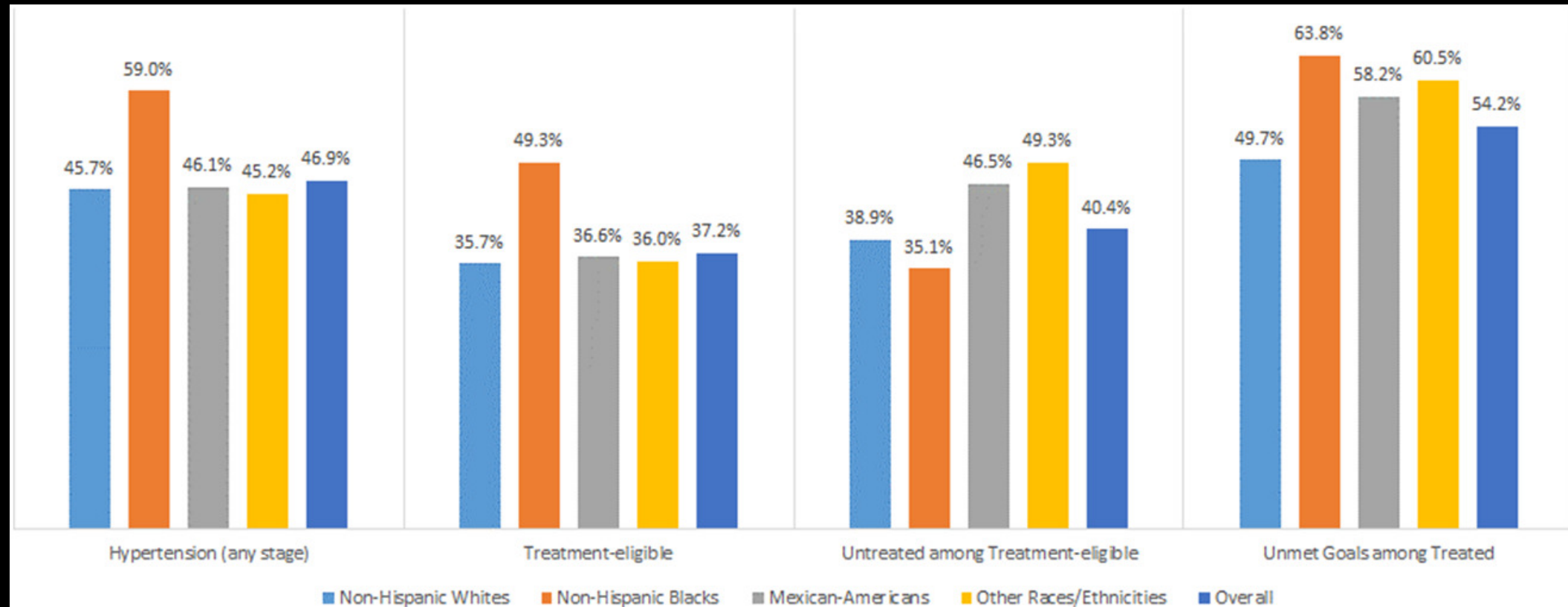
Achieving Equity in our Practices



LEADING *TOGETHER*

Health Differences

Health Differences

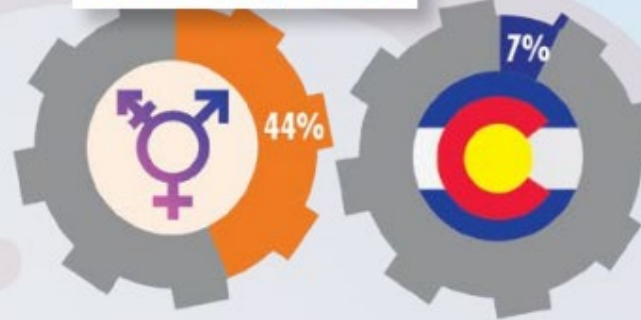


Mental Health

Transgender Coloradans

All Coloradans

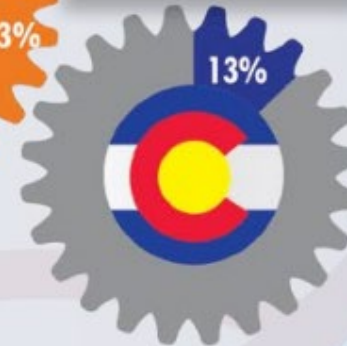
Current Depression



Contemplated Suicide in the Past Year



Ever Told You Had an Anxiety Disorder



Attempted Suicide in the Past Year



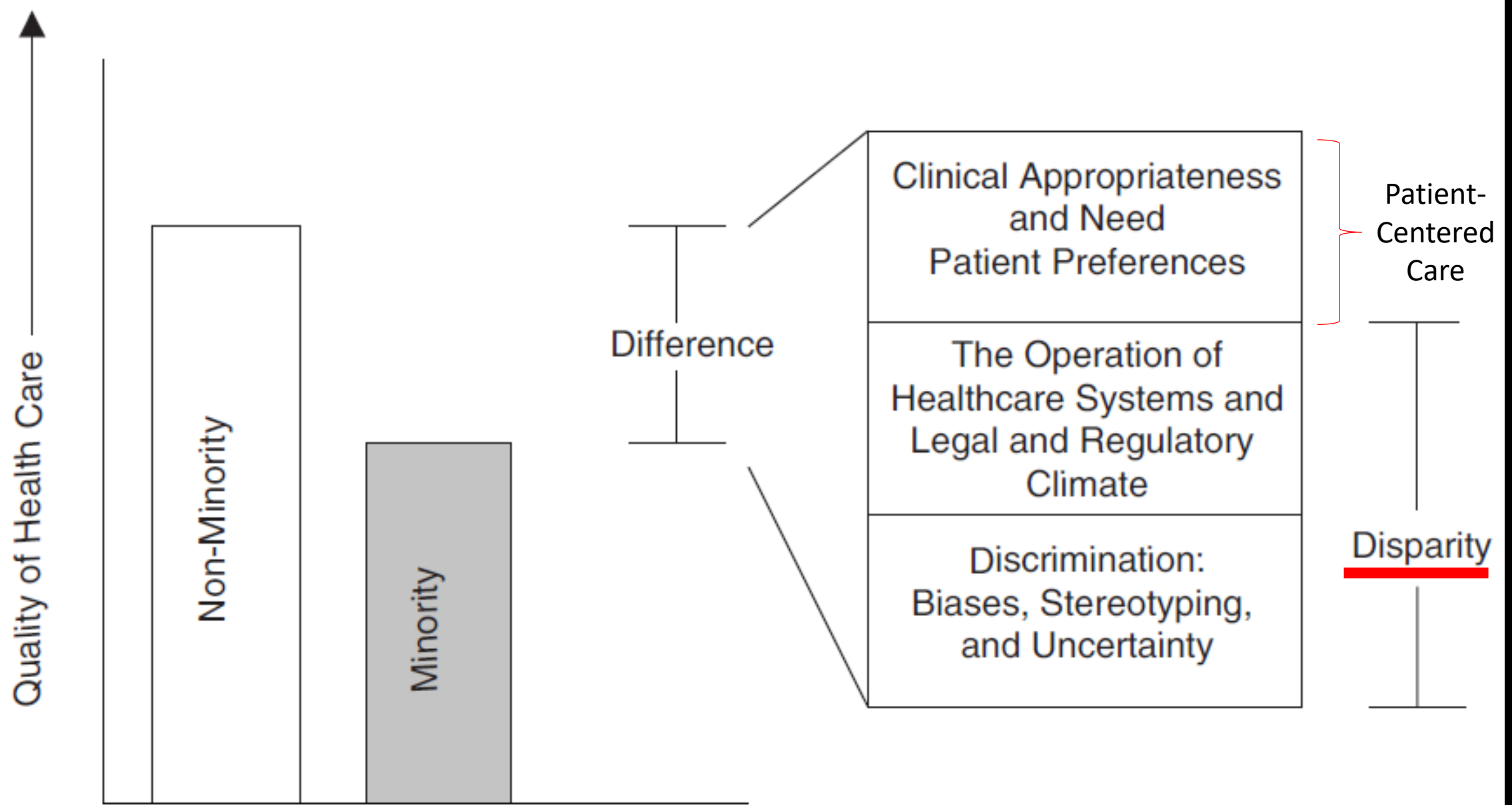
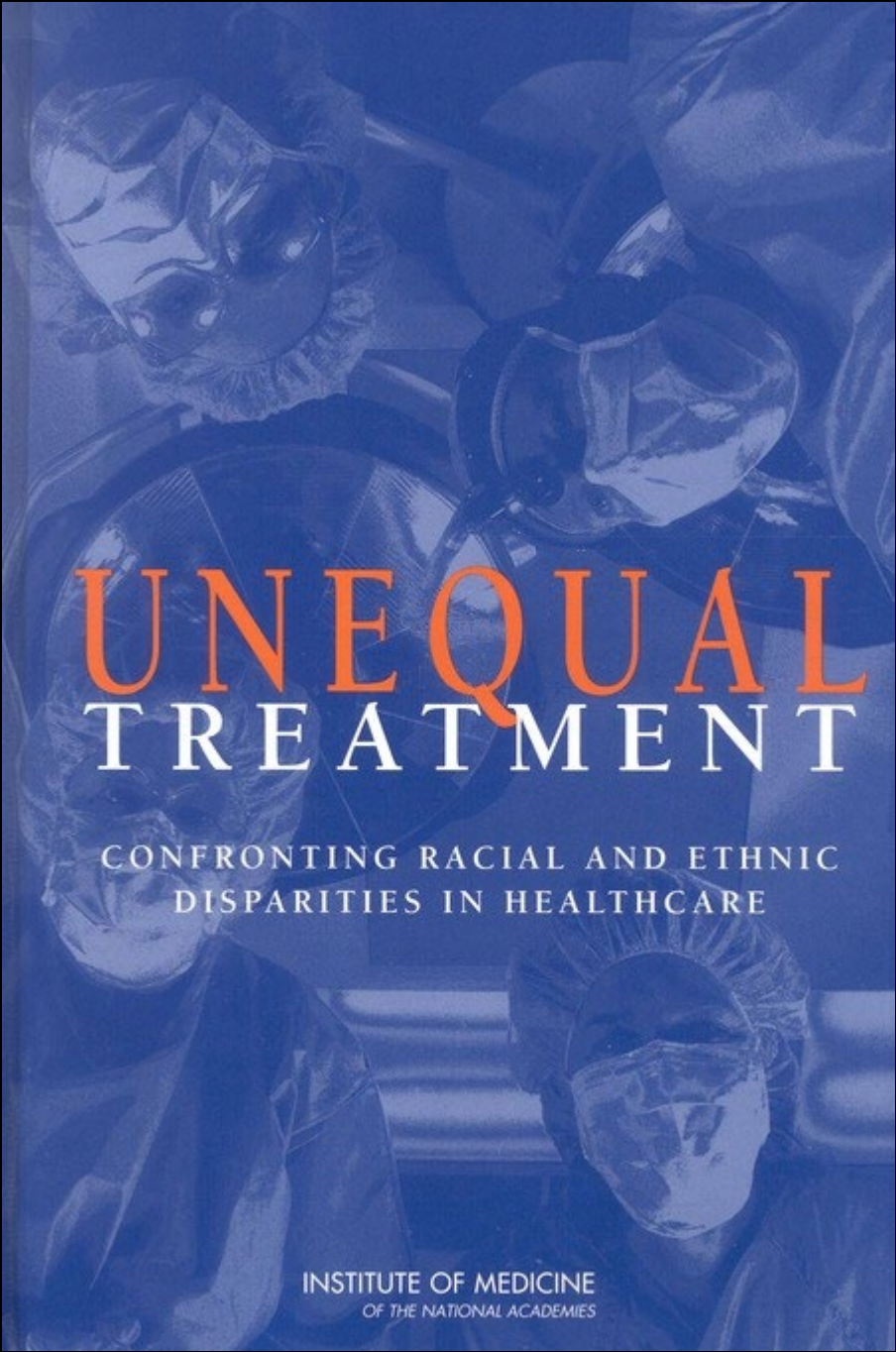


FIGURE S-1 Differences, disparities, and discrimination: Populations with equal access to healthcare. SOURCE: Gomes and McGuire, 2001.



UNEQUAL TREATMENT

CONFRONTING RACIAL AND ETHNIC
DISPARITIES IN HEALTHCARE

INSTITUTE OF MEDICINE
OF THE NATIONAL ACADEMIES

The National Academies of
SCIENCES • ENGINEERING • MEDICINE

CONSENSUS STUDY REPORT



Understanding the Well-Being of LGBTQI+ Populations



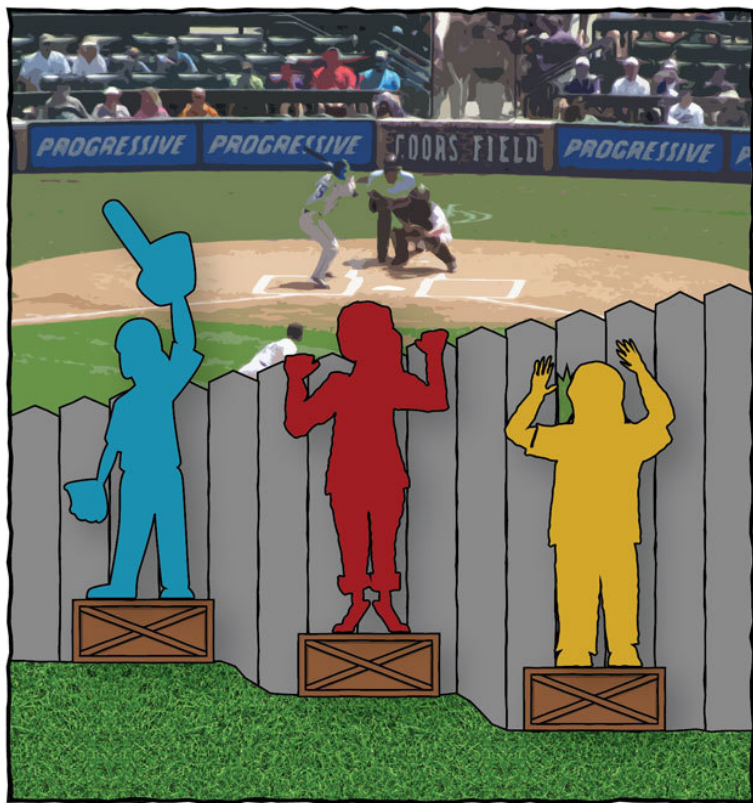
PROCEEDINGS OF A WORKSHOP

People Living with Disabilities

HEALTH EQUITY,
HEALTH DISPARITIES, AND
HEALTH LITERACY



The National Academies of
SCIENCES • ENGINEERING • MEDICINE

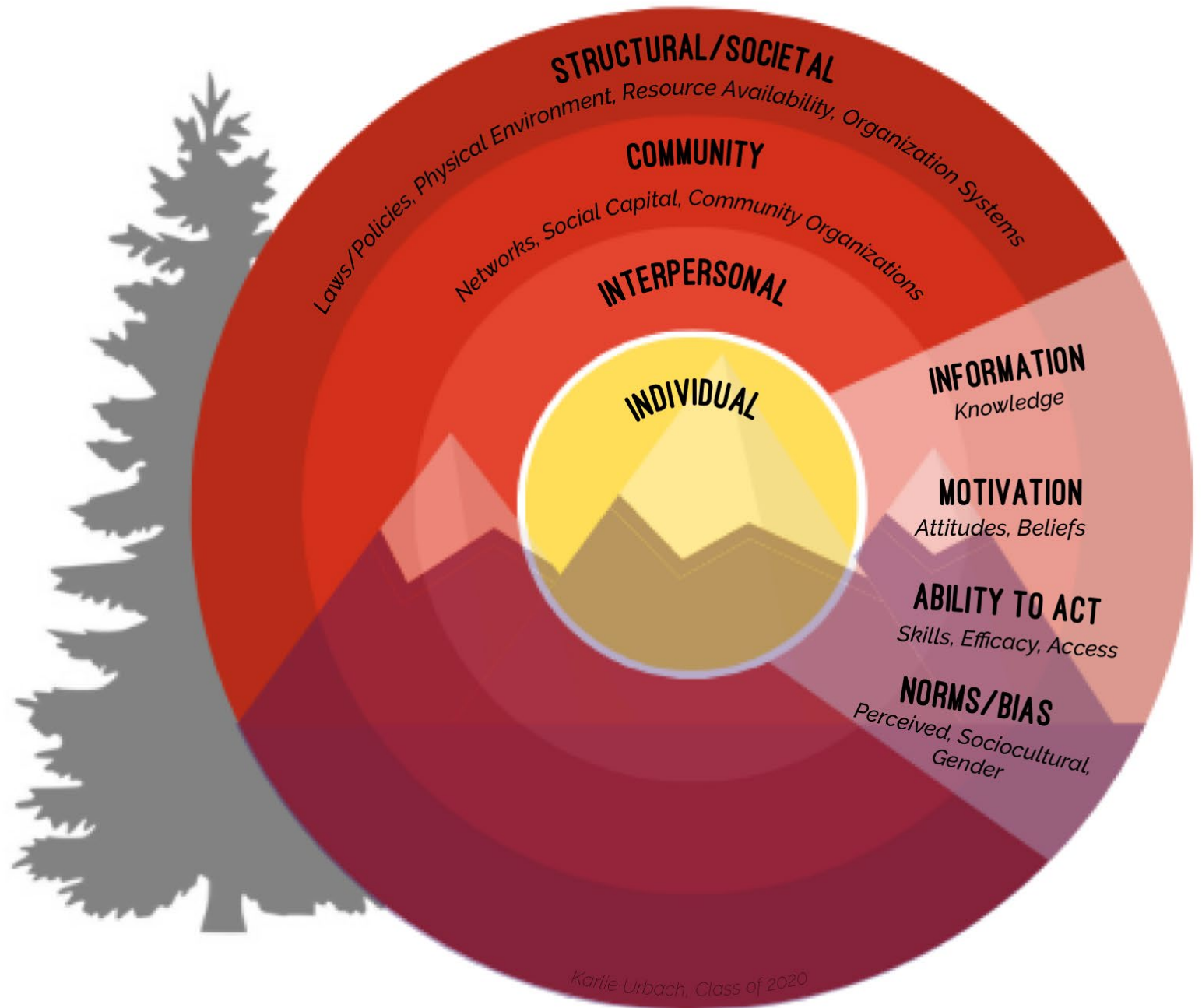


EQUALITY

DEI is a structural issue



Socio- ecologic model



Milestones

Inclusivity and Equity Milestones

1. Practice leadership incorporates health equity into quality improvement initiatives. (BB1)
2. Practice develops and implements a process to routinely gather and update patient demographic information, including race, ethnicity, language and communication needs, sexual orientation, and gender identity. (BB2)
3. Practice includes consideration of patient demographics and health equity in quality improvement efforts. (BB2)
4. Practice develops clear, holistic hiring process that increase the diversity of team members. (BB4)
5. Practice implements a team-based communication strategy to improve engagement of all team members. (BB4)
6. Practice develops and provides individualized professional development for all staff. (BB4)
7. Practice recruits and retains members of the PFAC that represent the diversity of the population served. (BB5)
8. Practice assesses the inclusivity of the practice through items on their patient experience survey. (BB5)
9. The practice identifies and addresses equity issues impacting patient access to care, including telehealth services. (TH, BB8)

Discussion