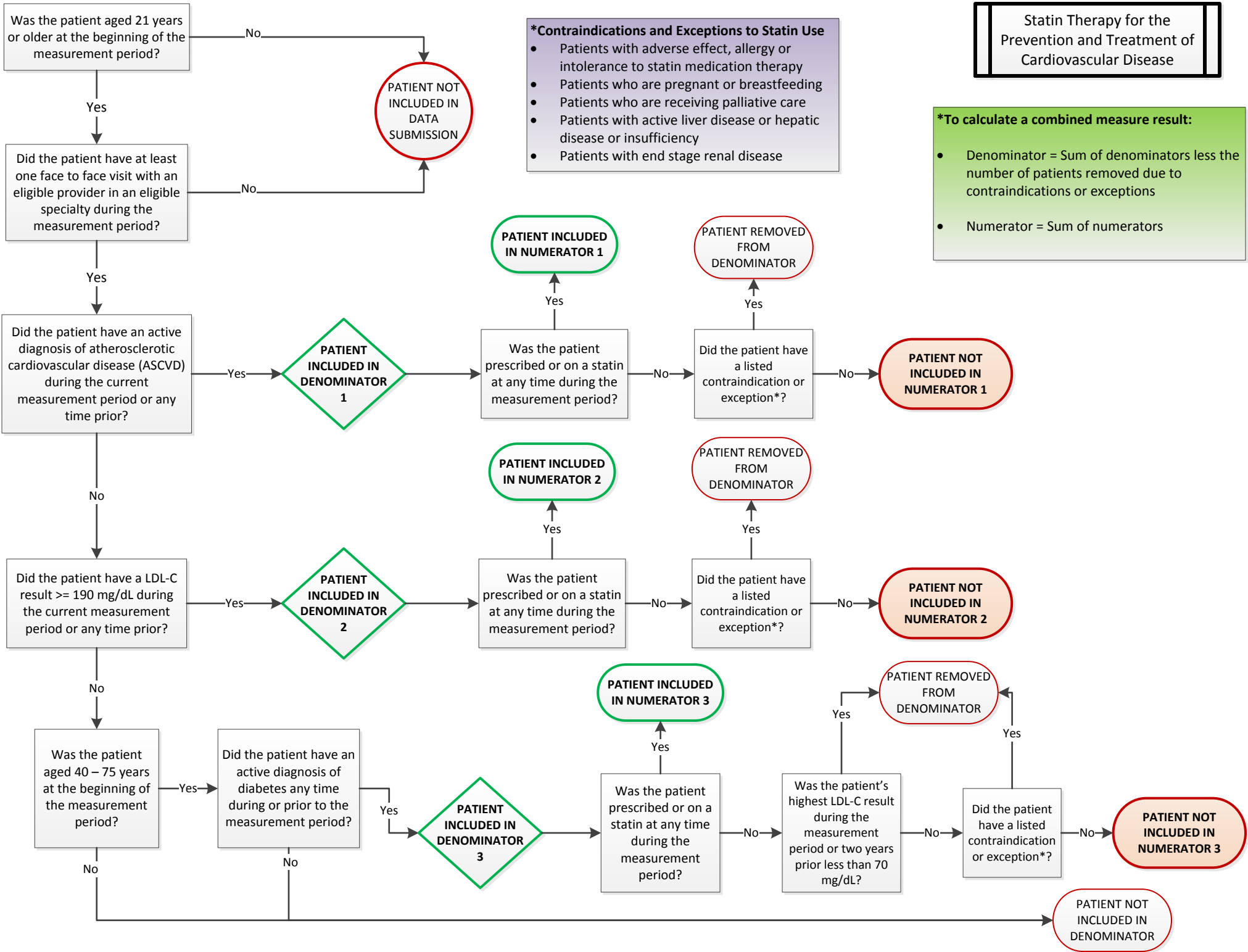


Statin Therapy for the Prevention and Treatment of Cardiovascular Disease



- *Contraindications and Exceptions to Statin Use**
- Patients with adverse effect, allergy or intolerance to statin medication therapy
 - Patients who are pregnant or breastfeeding
 - Patients who are receiving palliative care
 - Patients with active liver disease or hepatic disease or insufficiency
 - Patients with end stage renal disease

- *To calculate a combined measure result:**
- Denominator = Sum of denominators less the number of patients removed due to contraindications or exceptions
 - Numerator = Sum of numerators