



Practice Innovation Program

UNIVERSITY OF COLORADO
ANSCHUTZ MEDICAL CAMPUS

Project funded by the Colorado
Department of Healthcare Policy
and Finance per House-Bill 22-1302
Healthcare Practice Transformation



COLORADO
Department of Health Care
Policy & Financing

1302 PF Learning Community

February 18, 2025



Department of
Family Medicine



Welcome!

Please put your name, pronouns, role and organization in the chat.

You can ask questions via the chat we will monitor it as we go along. We will also pause for questions periodically.

Slides from today will be made available on the Practice Innovation Program website.

AGENDA

Updates & reminders

Kathy & Kristin

Upcoming Events

Kathy

Making Connections: Regional

Health Connector Workforce

Gillian Grant, Trailhead Institute



PF Deliverable Schedule, February - June 2025

Activity	Due Date
February 2025 Field Note	3/8/2025
March 2025 Field Note	4/8/2025
Quarterly PTO Snapshot – Q1 2025	4/15/2025
April 2025 Field Note	5/8/2025
Evaluation Task	5/8/2025
May 2025 Field Note	6/8/2025
Update Building Blocks of Behavioral Health Integration: Care Delivery Assessment	6/15/2025
Quarterly PTO Snapshot – Q2 2025	6/15/2025
June 2025 Field Note	6/30/2025

Events on the Horizon

Wednesday, February 19, 2025, 12:00 – 12:45

Developing Financial Sustainability for Integrated Behavioral Health Practices Part 1

*Dr. Lesley Manson, PsyD, Arizona State University
Pam Ballou-Nelson*

Friday, February 28, 2025, 12:00 – 12:45

Connecting the Dots: Screening and motivational conversations about alcohol

Carolyn Swenson, MSPH, MSN, RN

March 5, 2025, 12:00 – 12:45

LGBTQIA+ Inclusive Behavioral Healthcare

Alex Floyd, LCSW, One Colorado

Thursday, March 20, 2025, 12:00 – 12:45

Developing Financial Sustainability for Integrated Behavioral Health Practices Part 2

*Dr. Lesley Manson, PsyD, Arizona State University
Pam Ballou-Nelson*

Monday, April 21, 2025

Spring Collaborative Learning Session Keynote speaker – Attorney General Phil Weiser

Register Now!

2025 Collaborative Learning Session



<https://tinyurl.com/4zu7sa3e>

All Practices and Practice Transformation Organizations participating in the 1302 Behavioral Health Integration Project are invited to register and attend.



Keynote Speaker:
Colorado Attorney General, Phil Weiser

 Practice Innovation Program
UNIVERSITY OF COLORADO
ANSCHUTZ MEDICAL CAMPUS



Monday April 21, 2025

Registration opens at 8:00am

Anschutz Medical Campus, Health Sciences Building



Department of
Family Medicine



Scan to complete the
evaluation

https://practiceinnovationco.co1.qualtrics.com/jfe/form/SV_0The4kLPclSXJ1s



RFP F-45 Practice Transformation Organizations

- New Request for Proposal (RFP) for Practice Transformation Organizations is live on Rocky Mountain BidNet
 - Mechanism that allows us to establish approved PTOs and create Master Services Agreements (MSAs) for PTO work
 - For both current PTOs and new organizations interested in becoming an approved PTO
 - Closes 03/17/2025 02:00 PM MDT
- Emails were sent about this opportunity to PTO leads on 2/14 from Kirk.Miller@cu.edu
 - Viewing and submitting a proposal requires your group to join BidNet (free)
 - Webinars and FAQ regarding BidNet : <https://www.cu.edu/psc/doing-business-cu/participate-bid> -
 - Direct link to PTO RFP: <https://www.bidnetdirect.com/colorado/solicitations/open-bids/Practice-Transformation-Organizations/0000374420?purchasingGroupId=8409951&origin=1>
 - Optional, virtual pre-proposal meeting on February 25th at 1:00 PM MT (Zoom link in RFP documents)
 - All questions related to the content of the RFP must be sent via BidNet for formal response. For questions regarding signing up for BidNet, please reach out to Kirk.Miller@cu.edu

Making Connections: *Regional Health Connector Workforce*

*Gillian Grant, Trailhead Institute
February 18, 2025*





COLORADO
REGIONAL HEALTH CONNECTORS

Making Connections:

Regional Health Connector Workforce



Opening Question

**What do you already know about the RHC program?
If you're unfamiliar, what are you hoping to learn today?**



What is the RHC Program?





This Photo by Unknown Author is licensed under CC BY

Our Vision

Connected systems will lead to healthier lives for all Coloradans.

Our Mission

Regional Health Connectors improve health in Colorado by connecting the systems that keep us healthy – including primary care, public health, social services, and other community resources.

Purpose of the RHC Program



Goals

Better **coordination** across systems

Stronger and more **effective networks** to address SDoH

Stronger **social capital**

Healthier population, lower costs, happier patients and providers

Strategies

Involving clinics in community health initiatives

★ **Connecting** clinics to community assets

Guiding the development of referral networks

Educating on best practices to impact SDoH

Building & Deepening partnerships and capacity

Partnerships

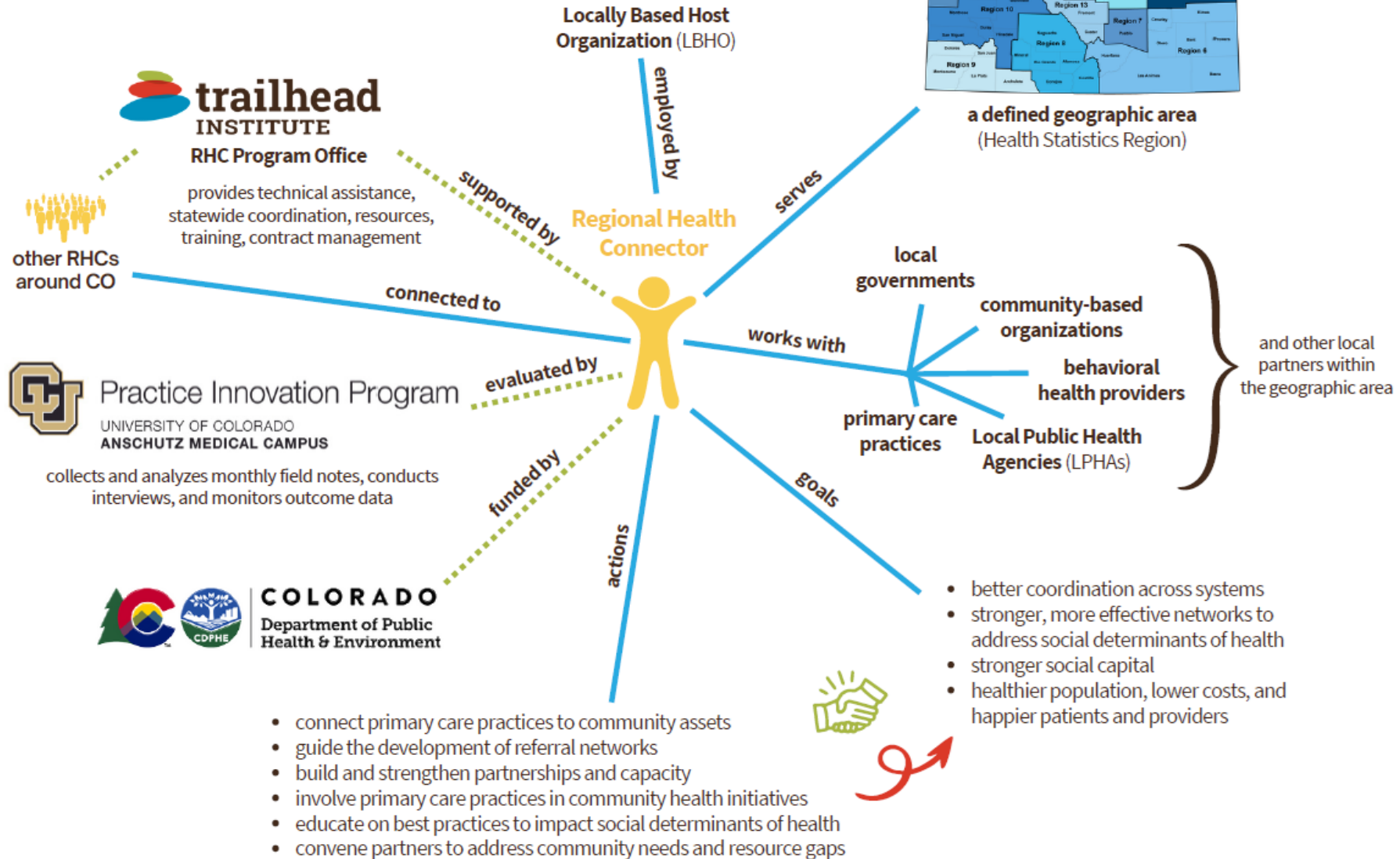


Program Office
Technical Support/Coaching
Evaluation
Sustainability

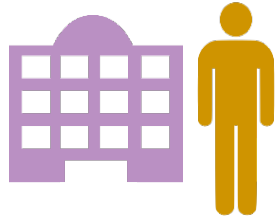
Evaluation
Sustainability
Advocacy

Fiscal Agent
State Partnerships
Advocacy

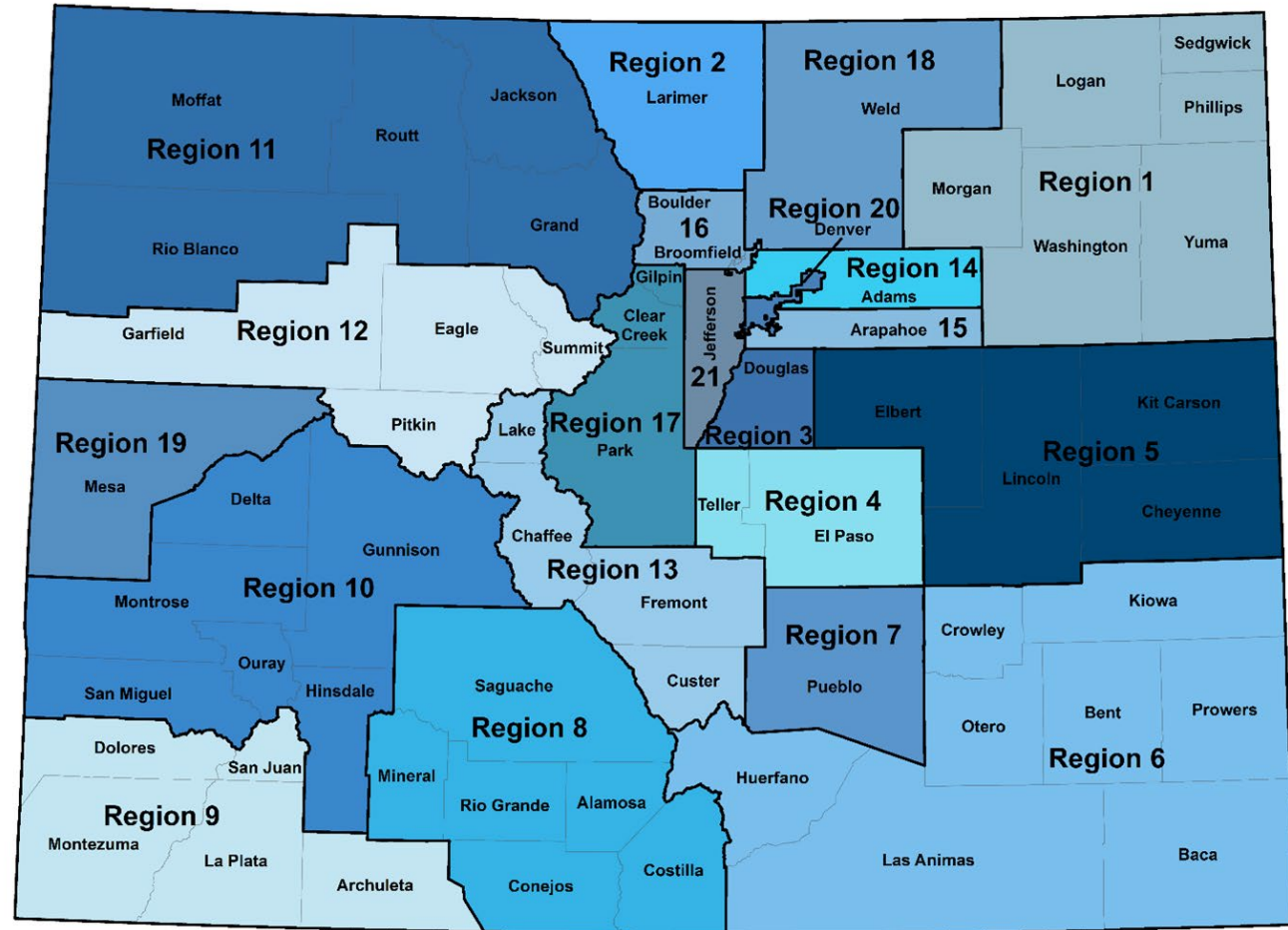
COLORADO REGIONAL HEALTH CONNECTORS PROGRAM STRUCTURE



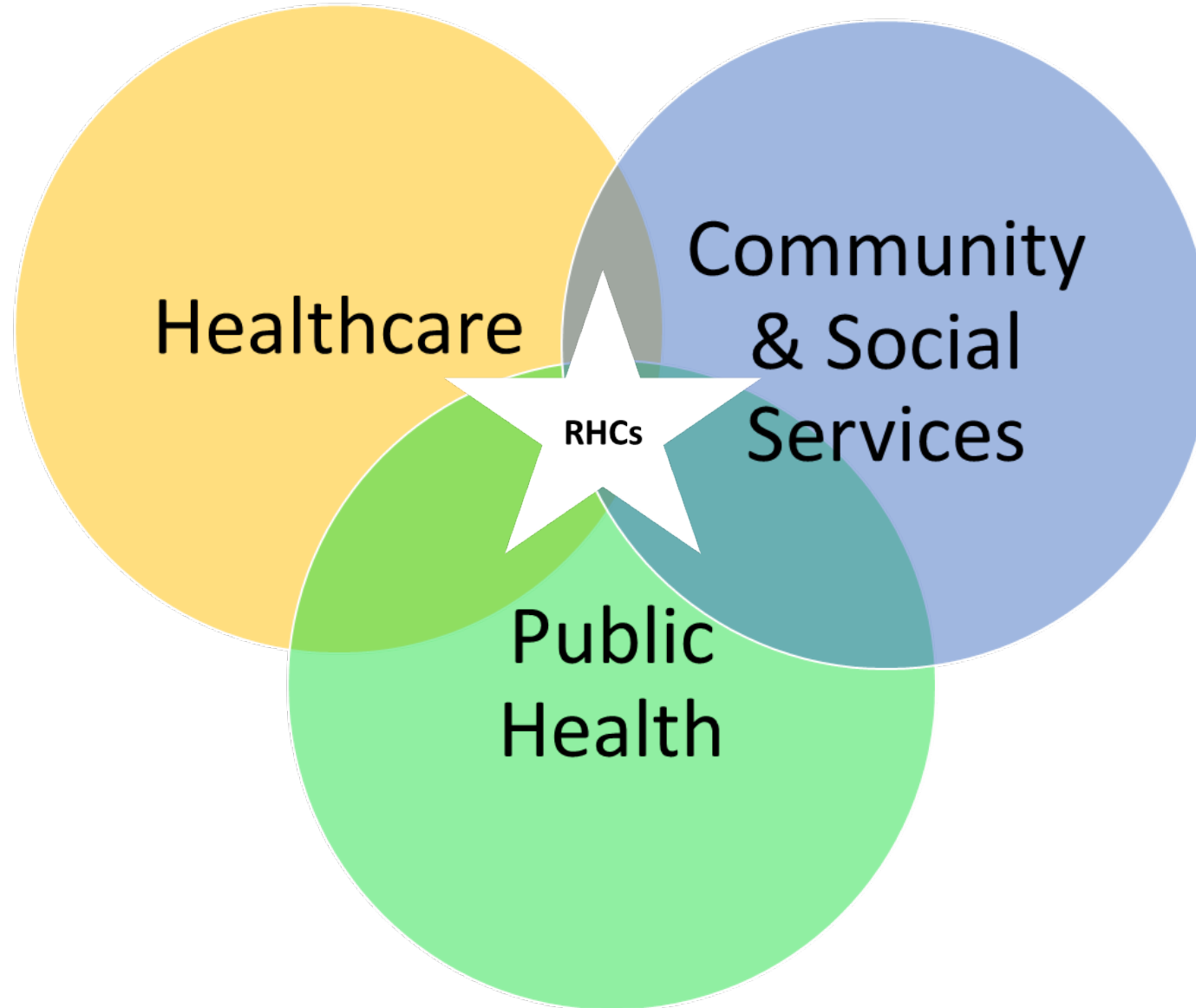
RHCs work in 21 Regions across Colorado



- RHCs are embedded in the community & employed by a local organization.
- Examples of local host organizations include LPHAs, AHECs, health alliances, & health-based CBOs/non-profits.



RHCs work across systems



RHC Work in Action



COLORADO
REGIONAL HEALTH CONNECTORS

Examples of RHC Work

- Responding to the lack of mental and behavioral health services available in the community and the low capacity that the few mental health providers in the area have, RHC focused their work on launching more activities that provide a space for people to connect and talk about their grief, including grief support groups and grief support kits. They also organized a bereavement care provider certification course for providers in the region.
- RHC built and leveraged partnerships with Indigenous farmers, growers, community organizations, and healthcare providers to bring forward awareness of cultural needs for Indigenous folks in food access and education. Through workshops, classes, and community events, RHC increased access to culturally relevant foods and promote Indigenous food education. Her vision emphasized the sustainability of her efforts and empowered community members to reclaim their cultural heritage through food
- RHC brought community members and organizations together to meet each other, learn about each other's work and resources, and making local connections to improve local health priorities. The buy-in and support from Erika's existing relationships in the mental/behavioral health and substance use care were important as a pathway to getting 41 participants in the same space at the same time to talk, share, and collaborate. From this event, a larger initiative was launched to support access and education to NARCAN to support SUD and overdose.

How to Stay in Touch!

To connect with all RHCs or a broader group:



**RHC Weekly
Resource Email**



**RHC Monthly
Learning Calls**



**Get in Touch with
Program Staff or
RHCs**

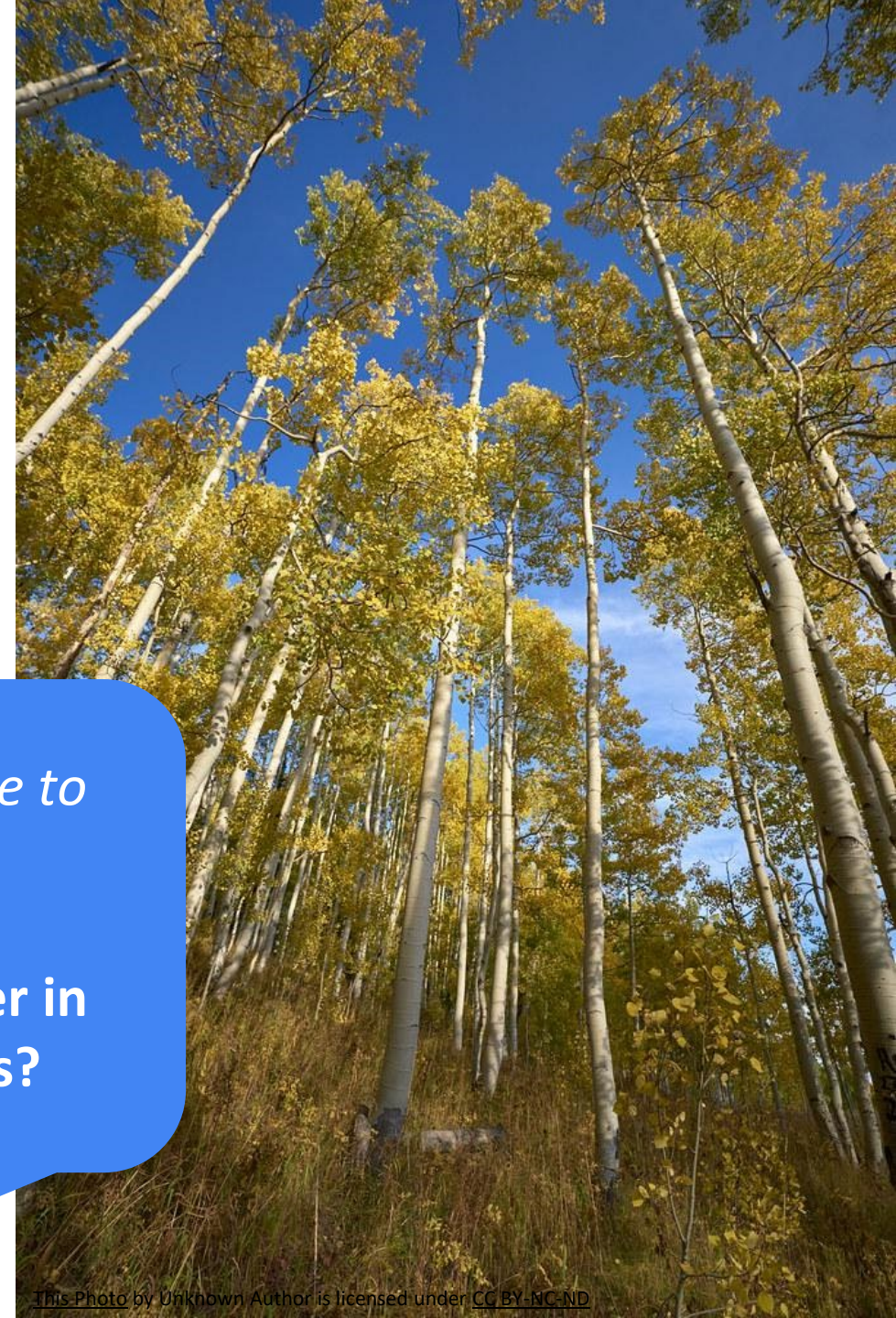
Discussion

*In the chat or unmute to
answer*

**What has worked well
working with RHCs?**

*In the chat or unmute to
answer*

**What could be better in
working with RHCs?**



Thank you!

- Gillian Grant, RHC
Program Manager,
ggrant@trailhead.institute



This Photo by Unknown Author is licensed under CC BY-NC-ND

PIP Contacts

Stephanie Kirchner – Practice Transformation Program Manager

Stephanie.Kirchner@cuanschutz.edu

Kathy Cebuhar – Learning Community Lead

Kathy.Cebuhar@cuanschutz.edu

Kristin Crispe – Practice Innovation Project Manager

Kristin.Crispe@cuanschutz.edu

Allyson Gottsman - Colorado Health Extension System Program Manager

Allyson.Gottsman@cuanschutz.edu

Thank you!