



Practice Innovation Program  
UNIVERSITY OF COLORADO  
ANSCHUTZ MEDICAL CAMPUS

Project funded by the Colorado  
Department of Healthcare Policy  
and Finance per House-Bill 22-1302  
Healthcare Practice Transformation



**COLORADO**  
Department of Health Care  
Policy & Financing

# 1302 PF Learning Community

December 19, 2023



Department of  
Family Medicine



---

Welcome!

Please put your name, pronouns, role and organization in the chat.

You can ask questions via the chat we will monitor it as we go along. We will also pause for questions periodically.

These slides from today will be made available on the Practice Innovation Program website.

# AGENDA

- Welcome
- Updates from HCPF
- BHP hiring resources
- Field note reminders & due dates for end of year
- BBA scoring around SUD or Psychiatry
- PIP Website orientation



Scan to  
complete the  
evaluation



# HCPF Updates



# Behavioral Health Provider Hiring Resources



# BHP Hiring Resources

- The Collaborative Family Healthcare Association <https://jobs.cfha.net/jobs/>
- DU Graduate School of Social Work job board link: [Job Board Portal](#)
- [Indeed](#)

# Field Notes & Due Dates





# Building Block Assessment Scoring



# Practice Innovation Program 1302 Website Orientation



# 1302 PTO Landing Page

University of Colorado Anschutz Medical Campus | Webmail | UCD Access | Canvas | Quick Links | Search


## Practice Innovation Program

School of Medicine

Home | About | Current Initiatives | Get Engaged | Previous Initiatives | COVID-19 | Learning Community | **Events Calendar**

About  
**For PTOs**  
For Practices

Learning Community  
Trainings  
SPLIT and Assessments  
Contacts



### 1302 Behavioral Health Integration

Resources for PTOs  
[Learning Community](#) | [Trainings](#) | [SPLIT & Assessments](#)

#### PTO Learning Community - Monthly

11/21/2023 - 1302 PF Learning Community	+
10/17/2023 - 1302 BHI Practice Transformation Organization Kickoff	+
07/12/2023 - 1302 Check-In Webinar for PTOs	+

#### Learning Community

#### Trainings

#### SPLIT and Assessments

#### Contacts

#### Learning Community Calendar

Find the latest events related to BHI/1302 here at the [Learning Community Calendar](#).

#### Monthly Meeting

The monthly meeting for PTOs and PFs are on the third Tuesday of the month from 2pm to 3pm MT.

Monthly details and any changes will be communicated here, the [Learning Community Calendar](#) and the CHES Newsletter.

#### PTO Trainings

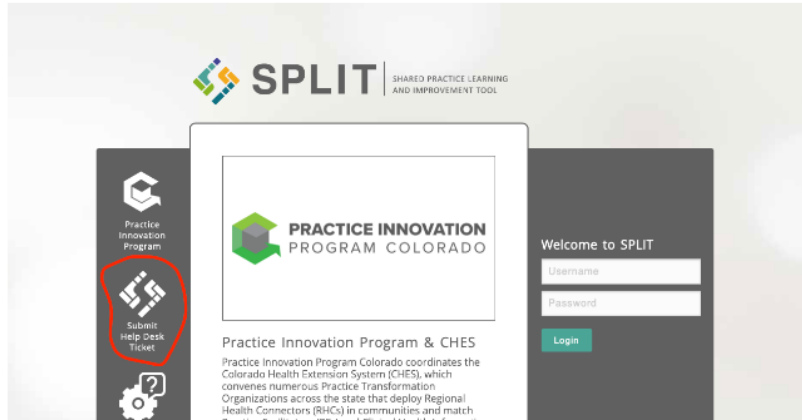
12/11/2023 - 1302 PF BHI Training	+
12/04/2023 - 1302/BHI Practice Facilitation Training 1 - PF Backpack	+

#### SPLIT and Assessments

##### SPLIT Access and Help Desk

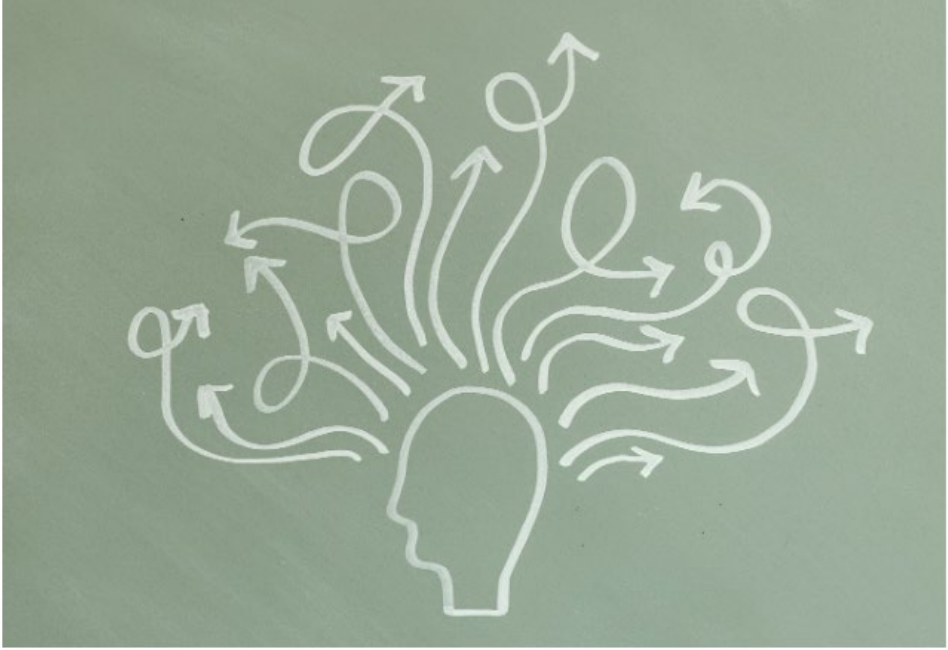
SPLIT can be accessed at <https://split.practiceinnovationco.org/>.

Please submit a ticket to the SPLIT Help Desk if there are any issues with access, assessment submissions, and more. It can be accessed from the SPLIT Home Page in the grey section on the left center.



Practice Innovation Program & CHES  
Practice Innovation Program Colorado coordinates the Colorado Health Extension System (CHES), which convenes numerous Practice Transformation Organizations across the state that deploy Regional Health Connectors (RHCs) in communities and match

- About
- For PTOs
- For Practices**
- Learning Community
- Contacts



## 1302 Behavioral Health Integration

Resources for Practices

[Trainings](#) | [Learning Community](#) | [Assessments & SPLIT](#)

### Practice Learning Community

12/5/2023 - 1302 Practice Learning Community +

### Learning Community

#### Learning Community Calendar

Find the latest events related to BHI/1302 here at the [Learning Community Calendar](#).

# 1302 Practice Landing Page

#### Learning Community


#### Contacts

#### Learning Community Calendar

Find the latest events related to BHI/1302 here at the [Learning Community Calendar](#).

#### Practice Meetings and Webinars

Upcoming Practice Learning Community Sessions will be communicated here, the [Learning Community Calendar](#) and the CHES Newsletter.

 [1302 Assessments Reference Tool - 10-30-2023 \(xlsx\)](#)  
56 KB

#### Contacts

Additional questions should be directed to the following:

General Questions, PTO Matching

- Allyson Gottsman (CHES Program Manager) - [Allyson.Gottsman@cuanschutz.edu](mailto:Allyson.Gottsman@cuanschutz.edu)

PTO Contracting, Invoicing

- Kristin Crispe (PIP Project Manager) - [Kristin.Crispe@cuanschutz.edu](mailto:Kristin.Crispe@cuanschutz.edu)

Practice Facilitation Needs, Assessments, Learning Community

- Stephanie Kirchner (Practice Transformation Program Manager) - [Stephanie.Kirchner@cuanschutz.edu](mailto:Stephanie.Kirchner@cuanschutz.edu)

HCPF Questions, Practice Questions

- Rachel Schuck (HCPF Section Manager) - [HCPF\\_integratedcare@state.co.us](mailto:HCPF_integratedcare@state.co.us)

# Upcoming 1302 Practice Learning Community Opportunities

## Learning Community Calls

**January 24, 2024, 12:00-1:00**

*Deep dive into the BHI Framework, and Introduction to Trauma-Informed Care*

Stephanie Gold, MD, Marisa Kostiuik, PhD, Licensed Psychologist

**February 28, 2024, 12:00 – 1:00**

*Billing & Coding to Launch and Sustain Integrated Behavioral Health*

Pamela Ballou-Nelson, RN, MSPH, FMC, CMPE, PhD,  
Healthcare Consulting Inc.

**March 12, 2024, 12:00 -1:00**

*Establishing Best Practices for WHOs? Warm handoffs and more!*

Courtney Legge, PsyD, Licensed Psychologist

## Collaborative Learning Sessions

**April 18, 2024**

Anschutz Medical Campus  
Aurora, Colorado  
Details to come

**April 2024**

Grand Junction, Colorado  
Details to come



Scan to  
complete the  
evaluation



Questions?