

SEPTEMBER 2023

## ANNUAL RUN FOR THE RING 5K

It was a fantastic day raising over \$31,000 for The Guild of the Children's Diabetes Foundation and the Barbara Davis Center for Diabetes. Thank you to everyone who donated and brought us another step closer to the brass ring; the cure! As usual the largest team was BDC Research Division who had 33 members participate! Congratulations to Dr. Lori Sussel who placed 1st in the race!



## CONGRATULATIONS!

We would like to recognize and congratulate the below investigators who recently were awarded grants. We, as a community, are so proud of your many accomplishments.

**Rachel Friedman, PhD**

*Single Cell Genomics to Resolve Control of Immune Cell Function During Type 1 Diabetes. (NIH)*

**Xiaofan Jia, PhD**

*Newly identified novel autoantibodies specific to  $\beta$ -cell surface ZnT8 antigen as an early biomarker in type 1 diabetes. (JDRF)*

**Aaron Michels, MD PhD**

*T and B cell Receptor Atlas Across Tissues and Stages of Type 1 Diabetes. (Helmsley Foundation)*

**Liping Yu, MD**

*Simple multiplex assay to screen multiple autoimmune diseases simultaneously in children. (SPARK)*



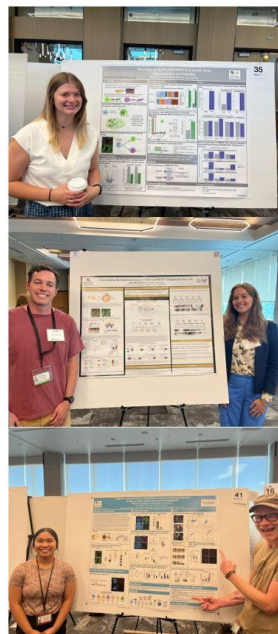
## A VERY SUCCESSFUL SUMMER FOR OUR STUDENTS

This summer was a great success for many students, including these individuals from the Sussel lab who each presented in poster sessions. Congratulations & well done!

McKenna Casey

Claire Howell

Braelyn Cayaban



## 2022 PILOT & FEASIBILITY AWARDEE: LESSONS & TRIUMPHS - NIKKI FARNSWORTH, PhD

### How did the P&F award help your research?

The P&F award has been instrumental in the success of my recent project developing a targeted drug delivery vehicle for the treatment and prevention of Type 1 Diabetes. The support from this award and mentoring I received as part of the DRC has allowed me to collect proof of principle evidence that our novel drug delivery system can target the mouse beta-cell in vivo and the human beta cell in vitro. This data was critical and allowed my lab to successfully obtain long-term funding for this project through the JDRF. The P&F award really ignited this project and has allowed us to expand our research into the islet transplantation setting where we hope our targeted drug delivery vehicle can reduce islet graft loss and improve transplantation outcomes.



Do you believe this award helped develop you professionally? If so, how?

I absolutely believe this award has helped me professionally. Aside from helping me to launch a new area of research for my lab the mentoring I have received through the P&F program has helped me to grow professionally. Specifically, my P&F mentors have provided feedback on my proposals, whether related to my P&F project or not, and have provided guidance on career activities that I should pursue to further enhance my research.

What advice would you give to yourself in April 2022, when you first received this award?

The advice I would give myself when I first received the P&F award, is that when your P&F mentors tell you they are available to meet and talk through any career questions or obstacles, take them up on it sooner rather than later. They are such great resources and have been so generous with their time.



## DIABETES RESEARCH CENTER EVENTS

**Diabetes Research Virtual Seminar Series**

**Wednesday, September 13, 2023**  
11:00 AM PT | 12:00 PM MT | 1:00 PM CT | 2:00 PM ET  
<https://zoom.us/j/91323894836>

**RNA splicing: A novel regulatory layer of islet function**

There is emerging evidence implicating RNA-binding protein (RBPs) and altered splicing activity in the pathogenesis of diabetes. Recent studies have identified dysregulation RBPs and ensuing aberrant mRNA splicing in diseased human  $\beta$  cells compared to healthy controls. I will discuss the mechanism through which a  $\beta$  cell RBP alters islet function under stress conditions.

**Lori Susse, PhD**  
Professor of Pediatrics,  
Research Director,  
Barbara Davis Center for Diabetes, University of  
Colorado Anschutz Medical Center

This seminar series is organized by the Diabetes Research Centers and Centers for Diabetes Translation Research. To view previous webinars or register for the "Meet the Speaker" meeting, please go to <https://diabetes-virtual-seminar.org/>

Join us on Wednesday, September 13, 2023 at 12PM MST for the Diabetes Research Virtual Seminar Series discussion with our director, Dr. Lori Susse.

Please register [HERE](#) prior to September 13.

Join us [HERE](#)

For More information or to join the email list click here: <https://diabetes-virtual-seminar.org/>

Diabetes Research Center  
UNIVERSITY OF COLORADO ANSCHUTZ MEDICAL CAMPUS

Nutrition Obesity Research Center  
UNIVERSITY OF COLORADO ANSCHUTZ MEDICAL CAMPUS

*Join the DRC and NORC  
as our communities jointly welcome:*

**Victoria Vieira-Potter, PhD**  
Associate Professor  
Nutrition & Exercise Physiology  
University of Missouri, Columbia

***"Sex, Drugs, and Exercise: Effects on Fat Cells?"***

**Monday September 25, 2023**  
**12:00pm-1:00pm**  
**Barbara Davis Center - 2<sup>nd</sup> floor Main Conference Room 2104**

Contact: [Lisel.Woods@CUAnschutz.edu](mailto:Lisel.Woods@CUAnschutz.edu) and/or [Olivia.Schmidt@cuanschutz.edu](mailto:Olivia.Schmidt@cuanschutz.edu)

## RESEARCH IN PROGRESS SEMINAR SERIES

### FALL 2023

**Mondays at 12:00pm**  
**BDC Main Conference Room 2104**

Monday, September 11, 2023	OPEN SLOT
Monday, September 18, 2023	Mia Smith, PhD
Monday, September 25, 2023	External Guest : Victoria Vieira-Potter, PhD University of Missouri
Monday, October 2, 2023	Liudmila Kulik, PhD
Monday, October 9, 2023	Cristy Geno, PhD
Monday, October 16, 2023	Rachel Friedman, PhD
Monday, October 23, 2023	Kathleen Woulfe, PhD

<b>Monday, October 30, 2023</b>	Sarit Polsky, PhD
<b>Monday, November 6, 2023</b>	Neda Rasouli, PhD
<b>Monday, November 13, 2023</b>	Anne Gresch
<b>Monday, November 20, 2023</b>	<b>Thanksgiving Break</b>
<b>Monday, November 27, 2023</b>	<b>City of Hope Diabetes Research Symposium</b>
<b>Monday, December 4, 2023</b>	Elliott Brooks
<b>Monday, December 11, 2023</b>	Maria Hansen
<b>Monday, December 18, 2023</b>	<b>Holiday Break</b>
<b>Monday, December 25, 2023</b>	<b>Holiday Break</b>

Questions? Contact Lisbel Woods at [Lisbel.Woods@CUAnschutz.edu](mailto:Lisbel.Woods@CUAnschutz.edu)

## 2023-2024 BDC & DRC DIABETES SPEAKER SERIES

Seminars will take place in person on Fridays at 12pm MT  
All seminars will have a link provided for registration.

Questions? Contact:

Christy Vasey, [christy.vasey@cuanschutz.edu](mailto:christy.vasey@cuanschutz.edu), 303-724-9787

Friday, September 8, 2023	<b>Joana Almaca, PhD</b> Assistant Professor	<i>Endocrinology Diabetes and Metabolism</i> Miller School of Medicine, University of Miami
Friday, September 15, 2023	<b>Sakeneh Zraika, PhD</b> Research Associate Professor	<i>Division of Metabolism, Endocrinology &amp; Nutrition</i> VA Puget Sound Health Care System
Friday, September 22, 2023	<b>Andrew Patterson, MD</b> Professor	<i>Senior Scientist, Genetics and Genome Biology,</i> <i>The Hospital for Sick Children, Toronto, ON</i>
Friday, September 29, 2023 <i>Gossard Forum</i>	<b>Rafael Arrojo e Drigo, PhD</b> Assistant Professor	<i>Molecular Physiology and Biophysics</i> Vanderbilt University
Friday, October 20, 2023	<b>Paige Geiger, PhD</b> Professor	<i>Molecular and Integrative Physiology</i> University of Kansas Medical Center
Friday, November 3, 2023	<b>Jill Kanaley, PhD</b> Professor	<i>Nutrition and Exercise Physiology</i> University of Missouri
Friday, November 10, 2023	<b>Childhood Diabetes Prevention Day</b>	<i>Symposium</i> AMC- TBD
Friday, November 17, 2023 *Joint visit with CHCO*	<b>Aaron Kelly, PhD</b> Professor	<i>Division of Pediatric Epidemiology and Clinical Research</i> <i>Co-Director, Center for Pediatric Obesity Medicine</i> University of Minnesota Medical School
Friday, December 1, 2023	<b>Julie Sneddon, PhD</b> Assistant Professor	<i>UCSF School of Medicine</i> Diabetes Center
Friday, January 19, 2024	<b>Maria J. Redondo, MD, PhD, MPH</b> Professor	<i>Pediatric Diabetes &amp; Endocrinology,</i> Baylor College of Medicine
Friday, February 2, 2024	<b>Emily K. Sims, MD</b> Associate Professor	<i>Pediatric Endocrinology and Diabetology</i> Indiana University School of Medicine Center for Diabetes and Metabolic Diseases
Friday, February 16, 2024 *Joint visit with Immunology*	<b>Donna L. Farber, PhD</b> Professor	<i>Director, Human Tissue Immunity and Disease Initiative</i> <i>Chief, Division of Surgical Sciences</i> Columbia University
Friday, March 1, 2024	<b>Lukas K. Tamm, PhD</b> Professor	<i>Chair, Department of Molecular Physiology</i> <i>and Biological Physics</i> <i>Director, Center for Membrane and Cell Physiology</i> University of Virginia School of Medicine
Friday, March 15, 2024 <i>Gossard Forum</i>	<b>Florence Brown, MD</b> Assistant Professor	<i>Co-Director Joslin and BIDMC Diabetes in Pregnancy Program</i> Harvard Medical School
Friday, March 29, 2024	<b>BDC Diabetes Day Symposium</b> Keynote Speaker: <b>Jane Buckner, MD</b>	<i>Director, Translational Research Program</i> President- Benaroya Research Institute at Virginia Mason
Friday, April 12, 2024	<b>Lu Cai, MD, PhD</b> Professor	<i>Director, Pediatric Research Institute</i> University of Louisville School of Medicine
Friday, April 26, 2024	<b>Roland Tlisch, PhD</b> Professor	<i>Microbiology and Immunology</i> University of North Carolina, Chapel Hill
Friday, May 10, 2024	<b>Senta Georgia, PhD</b> Assistant Professor	<i>Endocrinology, Diabetes and Metabolism</i> Keck School of Medicine, University of Southern California

## OPPORTUNITIES FOR FUNDING



University of Colorado  
Anschutz Medical Campus

Women's Health Innovation Scholar (WHINS)

LETTERS OF INTENT  
DUE OCT. 6, 2023

Salary, benefits and annual  
project support funds for two  
years.

WHINS fosters mentored research career  
development of early-career faculty who wish to  
develop independent careers focused on women's  
health and sex and gender differences research.  
With a focus on:

- Cardiovascular Disease
- Diabetes/Metabolism
- Intersection of Mental and Physical Health

Full details at [ludemancenter.org](http://ludemancenter.org)



Ludeman Family Center for  
Women's Health Research  
UNIVERSITY OF COLORADO ANSCHUTZ MEDICAL CAMPUS



The Ludeman Family Center for Women's Health Research has released a call for Letters of Intent (LOI) for our Women's Health Innovation Scholar Program (WHINS). WHINS is an internal grant mechanism of the Ludeman Center that fosters mentored research career development of early-career faculty (men and women) who wish to develop independent careers focused on women's health or sex and gender differences research in our core areas of: Cardiovascular disease, Diabetes/metabolism  
Integration of mental and physical health

**WHINS will provide salary support of \$100,000/yr for two years, with a 3rd being possible, plus \$35,000 in annual project support funds to the awardee.** One WHINS position will be awarded in this cycle. Eligibility spans the full spectrum of research (e.g. basic, clinical, translational, population science, implementation and biomedical informatics) across the lifespan. Candidates may be postdoctoral fellows, instructors, or within their first three years as assistant professors. Highly innovative research will be given priority. See attached Request for LOI for details.

Letters of Intent are due on **October 6, 2023 by 5:00 p.m. MT**. Selected applicants will be invited by WHINS leadership to submit a full application.

Please visit [our website](#) for full application details and email [carly.pilius@cuanschutz.edu](mailto:carly.pilius@cuanschutz.edu) with questions.

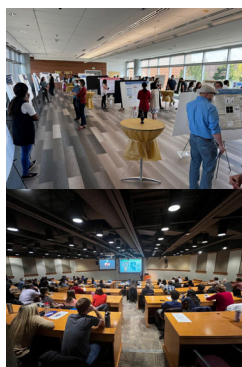
[Click here to see current CU INTERNAL Limited Submission Funding Opportunities](#)



[Click Here to see all current JDRF RFAs](#)



[Click Here to see all current NIH NIDDK RFAs](#)



## DRC WELCOMING NEW MEMBERS APPLY NOW!

Now is a great time to consider applying to become a DRC Member. We welcome members who are broadly engaged in all aspects of diabetes research, including complications associated with diabetes. As a member, you would get a discount for core usage and prioritized services.

Browse our website to learn more:

<https://medschool.cuanschutz.edu/diabetes-research-center>

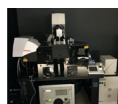
Here is a list of our current membership criteria

1. Full-time University of Colorado faculty
2. Pursuing research broadly relating to diabetes or metabolism that is funded by the NIH, ADA, JDRF or other diabetes-related funding source
3. Current recipients of DRC Pilot & Feasibility Awards, regardless of funding source
4. New faculty (within 5 years of first faculty appointment) who are developing independent diabetes-related research programs

If you are interested in joining as a member please click [HERE](#) to fill out an application.

## Have you considered using a DRC core service?

The DRC contains four biomedical cores that provide services and resources to DRC investigators. These cores are designed to facilitate and broaden CU Denver DRC research by expanding access to shared equipment, enhancing availability and training for emerging technologies, and allowing scientists to have greater access to clinical tissue and data.



### Cell and Tissue Analysis

Access to state-of-the-art multi-color confocal microscopy, flow cytometry analysis and cell sorting services, and expert assistance for mass cytometry and ion-beam imaging technologies.

[Learn More about Cell & Tissue Analysis](#)



### Clinical Resources

Access to an integrated, campus-wide, research registry enabling informatics-based clinical studies.

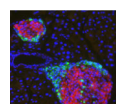
[Learn More about our Clinical Resources](#)



### Disease Modeling

Access and training in stem cell technologies for in vitro human disease modeling of diabetes & molecular core services.

[Learn More about Disease Modeling](#)



### Tissue Procurement & Processing

Access to islet isolation and transplantation services along with access to commonly used cell lines and diabetes-related histology techniques.

[Learn More about Tissue Procurement & Processing](#)

Want us to feature you or a colleague on an upcoming DRC newsletter? Have an important research update?

[Click Here to Submit a Story to the DRC Monthly Newsletter](#)



[Click Here to Follow us on Twitter](#)

**Please remember to acknowledge support from the University of Colorado Diabetes Research Center and our associated cores by referencing NIDDK grant #P30-DK116073 in your presentations and publications.**

[Click here to visit the DRC Website](#)

[Click Here to Subscribe to this Newsletter](#)

Contact [Lisbel.Woods@CUAnschutz.edu](mailto:Lisbel.Woods@CUAnschutz.edu) with any questions or feedback about this newsletter

This email was sent to: [lisbel.woods@cuanschutz.edu](mailto:lisbel.woods@cuanschutz.edu)

This email was sent by the University of Colorado

1775 Aurora Ct Aurora, CO, 80045, United States

[Manage your email preferences](#) | [Update your contact information](#)

Your CU ID:003940000nHmqAAC