

NOVEMBER 2023

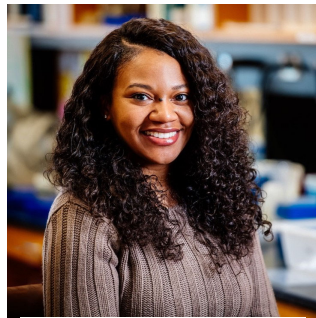
ANNOUNCING THE 2024 PILOT & FEASIBILITY AWARD CYCLE

We are thrilled to announce our 2024 Pilot & Feasibility Award Cycle. The Colorado DRC P&F Program funds diabetes researchers distributed across the spectrum of basic science, translational, clinical and health disparities research who investigate T1D, T2D, and/or diabetes complications and is a key element in recruiting and training promising diabetes research scientists. Applications will be considered from both junior and established investigators.

All details and links for the below events/forms can be found [here](#)

Intent to Apply Due: 12/1/23
Informational Zoom Sessions: 12/12/23 4PM, 12/15/23 10AM & 1/9/24 4PM
Full Application Due: 1/16/24
Award Start Date: 4/1/24

P&F Program Directors: Jane Reusch, MD & Paul Rozance, MD



2023 PILOT & FEASIBILITY AWARDEE: LESSONS & TRIUMPHS -

How did the P&F award help your research?

This P&F award has provided me with the funding needed to hire a PRA. With the extra hands, I'll be able to complete my studies in a timely manner.

Do you believe this award helped develop you professionally? If so, how?

This award has helped me tremendously. Aside from having additional hands to complete projects, this award allows me to play with ideas that wouldn't otherwise be funded. In doing so, I hope to be able to not only publish my scientific findings, but to also use the data to write additional grants such as a K01 or a K99.

What advice would you give to yourself when you first received this award?

I would remind myself that "science is a marathon not a sprint" and add that "science is a continuum, not a definitive". I think originally, I wanted to get everything done all at once. I was became frustrated with my inability to meet my self-imposed deadlines and standards. In doing so, there were moments where progress became stagnant. I am practicing self compassion and living by the words of the great philosopher Dory from "Finding Nemo" which are to "just keep swimming".



2023 International Congress of Diabetes and Metabolism



The congress was held from October 19 to 21, 2023, at the Gyeongju Hwabaek International Convention Center in South Korea. CDM's distinguished speakers shared their invaluable insights and latest research findings during the plenary lectures at ICDM 2023. In addition to the enlightening sessions led by eminent researchers, the congress featured over 40 symposium sessions covering a wide range of diabetes-related topics. Attendees had the opportunity to explore various facets of diabetes research, from groundbreaking discoveries to evidence-based treatment strategies. **Dr. Lori Sussel** spoke in the Basic & Translational Research section of the conference specifically speaking about Islet Biology "RNA processing: novel mechanism modulating islet beta cell secretion".

INCREDIBLE ANNUAL CAROUSEL BALL: Congratulations Dr. Garg!

This year marked The 37th Annual Carousel Ball. Attendees enjoyed dinner, cocktails & hors d'oeuvres, live & silent auctions, and exciting entertainment. All proceeds from the event benefited the Children's Diabetes Foundation and the Barbara Davis Center for Diabetes. **Satish Garg, MD** received the Founders Award in honor of his incredible service and dedication to the Barbara Davis Center and the role he has played in advancing adult diabetes care and clinical research.



The NEW ENGLAND
JOURNAL of MEDICINE



"Technology Use and Glycemic Outcomes during Pregnancy with Type 1 Diabetes" by Satish Garg, MD & Sarit Polsky, MD, MPH

Congratulations on this successful publication in the New England Journal of Medicine: Read it [here](#)

DIABETES COMMUNITY EVENTS



Diabetes Research Virtual Seminar Series

Wednesday, November 8, 2023

11:00 AM PT | 12:00 PM MT | 1:00 PM CT | 2:00 PM ET

<https://zoom.us/j/91323894836>



Structural Interventions to Address Cardiometabolic Disease Disparities

- Describe conceptual frameworks for understanding and intervening on cardiometabolic disease disparities
- Define structural interventions
- Key features and examples of structural interventions with the potential to promote equity in cardiometabolic conditions
- Challenges to developing and deploying structural interventions
- Opportunities and Recommendations for developing and implementing structural interventions to promote equity for cardiometabolic conditions

Arleen F. Brown, MD, PhD
Professor, Department of Medicine
General Internal Medicine and Health Services
Research
Co-Director, UCLA Clinical & Translational Science
Institute
Co-Director, Community Engagement & Research
Program



This seminar series is organized by the Diabetes Research Centers and Centers for Diabetes Translation Research. To view previous webinars or register for the "Meet the Speaker" meeting, please go to <https://diabetes-virtual-seminar.org/>

Join us [HERE](#) or alternatively you can go to the website at <https://diabetes-virtual-seminar.org/> and click on the link there.



Barbara Davis Center for Diabetes
UNIVERSITY OF COLORADO ANSCHUTZ MEDICAL CAMPUS

6th Childhood Diabetes Prevention Symposium General Population Screening for T1D

NOVEMBER 9-10, 2023

Anschutz Medical Campus, Aurora, Colorado, USA

We would like to invite you to participate in the forthcoming 6th Symposium on General Population Screening for T1D. It will be held as a hybrid meeting on November 9-10, 2023.

Register [here](#) for either or both days

Please join us for this event, even if only for one or two sessions.

Share the invitation with any of your colleagues or collaborators who may be interested.



WOMEN
INSPIRING AND
ELEVATING
LEADERSHIP IN
DIABETES

NEGOTIATION TIPS FOR WOMEN IN SCIENCE

Brynn Marks, MD, MSHPEd

Director of Technology of the
Diabetes Center at Children's
Hospital of Philadelphia



Nov 17 @ 10:00 AM EDT

Objectives:

- ✓ Describe basic negotiation strategies
- ✓ Identify potential items to negotiate
- ✓ Answer audience questions

Register & Submit Questions Here:

https://docs.google.com/spreadsheets/d/1yo1EUvmB-kVWU7IoxMAK7IJmhXqyZkpQssVHYET8_D4/edit?usp=sharing

Contact WIELD:

- @WIELDvoice
- <https://womenleadingdiabetes.com/>

A recording will be available on the WIELD website under the "Resources" tab after the event. Be sure to check out our previous webinars that have already been posted!

Click [HERE](#) to Register to the WIELD event on 11/17/23

RESEARCH IN PROGRESS SEMINAR SERIES

FALL 2023

*Mondays at 12:00pm
BDC Main Conference Room 2104*

DATE	PRESENTER
Monday, November 6, 2023	Faculty Candidate: Adriana Migliorini, PhD McEwen Stem Cell Institute, University Health Network Toronto, Ontario
Monday, November 13, 2023	Anne Gresch, PhD
Monday, November 20, 2023	Rachel Friedman, PhD
Monday, November 27, 2023	Roberta Pelanda, PhD
Monday, December 4, 2023	Elliott Brooks
Monday, December 11, 2023	Maria Hansen
Monday, December 18, 2023	Holiday Break
Monday, December 25, 2023	Holiday Break

2023-2024 BDC & DRC DIABETES SPEAKER SERIES

Seminars will take place in person on Fridays at 12pm MT
All seminars will have a link provided for registration.

Questions? Contact:
Christy Vasey, christy.vasey@cuanschutz.edu, 303-724-9787

Friday, November 10, 2023	Childhood Diabetes Prevention Day	Symposium AMC- TBD
Friday, November 17, 2023 *joint visit with CHCO*	Aaron Kelly, PhD Professor	Division of Pediatric Epidemiology and Clinical Research Co-Director, Center for Pediatric Obesity Medicine University of Minnesota Medical School
Friday, December 1, 2023	Julie Sneddon, PhD Assistant Professor	UCSF School of Medicine Diabetes Center
Friday, January 19, 2024	Maria J. Redondo, MD, PhD, MPH Professor	Pediatric Diabetes & Endocrinology, Baylor College of Medicine
Friday, February 2, 2024	Emily K. Sims, MD Associate Professor	Pediatric Endocrinology and Diabetology Indiana University School of Medicine Center for Diabetes and Metabolic Diseases
Friday, February 16, 2024 *joint visit with Immunology*	Donna L. Farber, PhD Professor	Director, Human Tissue Immunity and Disease Initiative Chief, Division of Surgical Sciences Columbia University
Friday, March 1, 2024	Lukas K. Tamm, PhD Professor	Chair, Department of Molecular Physiology and Biological Physics Director, Center for Membrane and Cell Physiology University of Virginia School of Medicine
Friday, March 15, 2024 Gossard Forum	Florence Brown, MD Assistant Professor	Co-Director Joslin and BIDMC Diabetes in Pregnancy Program Harvard Medical School
Friday, March 29, 2024	BDC Diabetes Day Symposium Keynote Speaker: Jane Buckner, MD	Director, Translational Research Program President- Benaroya Research Institute at Virginia Mason
Friday, April 12, 2024	Lu Cai, MD, PhD Professor	Director, Pediatric Research Institute University of Louisville School of Medicine
Friday, April 26, 2024	Roland Tisch, PhD Professor	Microbiology and Immunology University of North Carolina, Chapel Hill
Friday, May 10, 2024	Senta Georgia, PhD Assistant Professor	Endocrinology, Diabetes and Metabolism Keck School of Medicine, University of Southern California

JOB POSTINGS & OPPORTUNITIES FOR FUNDING



[Click Here to see all current JDRF RFAs](#)



JOB POSTING

The Division of Diabetes, Endocrinology and Metabolic Diseases (DDEMD) currently has two job openings for Program Directors in Diabetes Clinical Research. Applications will be accepted via USA jobs beginning on **October 30, 2023**. Click [here](#) to learn more.

FUNDING OPPORTUNITY

Dartmouth CF Research Center (DartCF) Pilot Award

NIDDK has provided funding to support a special pilot mechanism to encourage researchers affiliated with Diabetes Research Centers and Centers for Diabetes Translation Research to develop high-impact projects in Cystic Fibrosis-Related Diabetes (CFRD). 40% of 10-year olds with cystic fibrosis (CF) show pre-diabetic symptoms, and as CF modulator drugs create a welcome extension of lifespans, the incidence of CFRD is expected to increase significantly. However, major gaps remain in our understanding of disease. These pilot projects are intended to catalyze the engagement of diabetes experts with CFRD and to help provide critically needed insights into biological mechanisms and therapeutic options.

We encourage submissions from PIs at all DRCs and CDTRs. Preference will be given to new or emerging projects and collaborations and to PIs new to CF or at institutions that do not also host CF Research and Translation Centers (which are: Cincinnati Childrens, Dartmouth, Emory/Georgia, Ulowa, UAB, UNC, UW).

Proposals will be reviewed and recommended for funding by our External Advisory Committee and experts in CFRD, and will require final approval of NIDDK program officials.

Deadline: December 1, 2023

Click [HERE](#) for the RFA

FUNDING OPPORTUNITY

The NOFO on the new Human Islet Research Network Consortium on Modeling Autoimmune Diabetes is now published. This new consortium aims to support novel in vitro and in vivo models of human T1D biology, and looks to apply these models toward testing disease interventions.

Click [here](#) to learn more

Application due date: March 20, 2024
Earliest grant start date: December 2024

Please contact Dr. Hwa for questions:
Albert J. Hwa, PhD
Program Director, Islet Biology and Regenerative Medicine
albert.hwa@nih.gov

Click Here to see all current NIH NIDDK RFAs



University of Colorado
Anschutz Medical Campus

FUNDING OPPORTUNITY

2024 HR-pQCT Seed Grant Program

This High-Resolution peripheral Quantitative Computed Tomography (HR-pQCT) device can be used by clinical researchers to non-invasively acquire measures of volumetric bone mineral density and several aspects of bone quality/microarchitecture. This scanner utilizes a very low radiation dose (5uSv per scan) so it can be used for studies performed in adult, adolescent, and pediatric populations. More information about the device, including pricing, can be found on the CCTSI website.

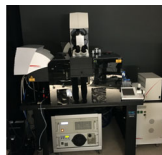
DEADLINE: 2/2/2024

Click [HERE](#) to learn more

Click here to see current CU INTERNAL Limited Submission Funding Opportunities

Have you considered using a DRC core service?

The DRC contains four biomedical cores that provide services and resources to DRC investigators. These cores are designed to facilitate and broaden CU Denver DRC research by expanding access to shared equipment, enhancing availability and training for emerging technologies, and allowing scientists to have greater access to clinical tissue and data.



Cell and Tissue Analysis

Access to state-of-the-art multi-color confocal microscopy, flow cytometry analysis and cell sorting services, and expert assistance for mass cytometry and ion-beam imaging technologies.

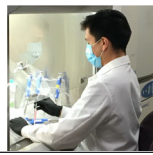
Learn More about
Cell & Tissue
Analysis



Clinical Resources

Access to an integrated, campus-wide, research registry enabling informatics-based clinical studies.

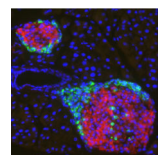
Learn More about
our Clinical
Resources



Disease Modeling

Access and training in stem cell technologies for in vitro human disease modeling of diabetes & molecular core services.

Learn More about
Disease Modeling



Tissue Procurement & Processing

Access to islet isolation and transplantation services along with access to commonly used cell lines and diabetes-related histology techniques.

Learn More about
Tissue Procurement
& Processing



DRC WELCOMING NEW MEMBERS

APPLY NOW!

Now is a great time to consider applying to become a DRC Member. We welcome members who are broadly engaged in all aspects of diabetes research, including complications associated with diabetes. As a member, you would get a discount for core usage and prioritized services.

Browse our website to learn more:

<https://medschool.cuanschutz.edu/diabetes-research-center>

Here is a list of our current membership criteria

1. Full-time University of Colorado faculty
2. Pursuing research broadly relating to diabetes or metabolism that is funded by the NIH, ADA, JDRF or other diabetes-related funding source
3. Current recipients of DRC Pilot & Feasibility Awards, regardless of funding source
4. New faculty (within 5 years of first faculty appointment) who are developing independent diabetes-related

research programs



If you are interested in joining as a member please click [HERE](#) to fill out an application.

Want us to feature you or a colleague on an upcoming DRC newsletter? Have an important research update?

Click Here to Submit a Story to the DRC Monthly Newsletter



Click Here to Follow us on Twitter

Please remember to acknowledge support from the University of Colorado Diabetes Research Center and our associated cores by referencing NIDDK grant #P30-DK116073 in your presentations and publications.

Click here to visit the DRC Website

Click Here to Subscribe to this Newsletter

Contact Lisbel.Woods@CUAnschutz.edu with any questions or feedback about this newsletter

This email was sent to: lisbel.woods@cuanschutz.edu

This email was sent by the University of Colorado

13001 E 17th Place Aurora, CO, 80045, US

[Manage your email preferences](#) | [Update your contact information](#)

Your CU ID:003f400000mHsmqAAC