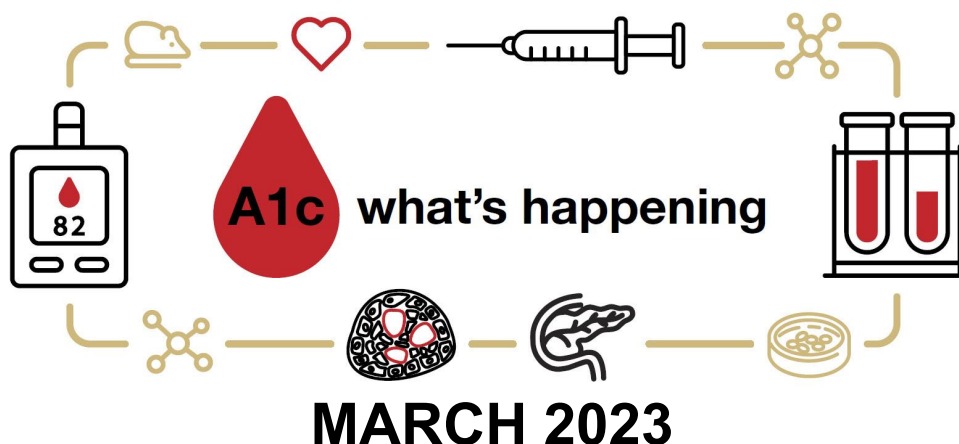


[View in Browser](#)


DIABETES DAY 2023



We are excited to announce that Diabetes Day will be on Friday March 24, 2023 from 9am-3:30pm in the Nighthorse Campbell Native Health Building - Shore Family Forum.

This year, Dr. Mark Atkinson from the University of Florida will be our keynote speaker.

RSVP TO ATTEND BY FOLLOWING THIS
LINK: <https://redcap.link/jxe70ncb>

We are looking forward to connecting in person!

CONGRATULATIONS TO RACHEL FRIEDMAN, PHD - BACK TO BACK AWARDS & RECOGNITION!

Dr. Friedman received an award from the JDRF for her work on "Defining human T cell-myeloid cell interactions in the islets"

In her own words she explains the impact of this award "Myeloid cells are the most abundant immune cell type in non-diabetic and many type 1 diabetic human islets. Yet, there is a gap in knowledge about functional subsets of myeloid cells in human islets in homeostasis and T1D, and how those islet myeloid subsets interact with T cells. We will use highly multiplexed tissue staining with detection by multiplexed ion beam imaging (MIBI) to identify and functionally characterize the myeloid cell populations and their interactions with T cells in human islets. These analyses will provide a framework to identify human islet myeloid populations that promote or curtail islet autoimmunity.

This JDRF Innovative Grant will enable us to establish MIBI analysis of the human pancreas sections using a 40-stain panel to deeply characterize cell subsets, interactions, and their spatial localization within and around the pancreatic islets. We hope that this work will provide a backbone that will facilitate other investigators' use of this



technology for diabetes research."

Dr. Friedman also received the "Spirit of nPOD Award" at the 15th annual Annual nPOD Scientific meeting. The Network for Pancreatic Organ Donors with Diabetes (nPOD) is dedicated to helping type 1 diabetes investigators obtain donor tissues for research and fostering collaboration among investigators. The network is funded through Juvenile Diabetes Research Foundation, a non-profit organization, and is based at the University of Florida, where Webb-Robertson has a joint appointment. We are so proud of the many accomplishments of Dr. Friedman and all members of the DRC!

JDRF IMPROVING
LIVES.
CURING
TYPE 1
DIABETES.



JANE REUSCH, MD, PhD HONORED AS RECIPIENT OF 2023 MAYO SOLEY AWARD BY THE WSCI AND WAP

The award, given to recognize outstanding research, is named after Mayo H. Soley, a co-founder of Western Society for Clinical Investigation who was recognized by his peers as a distinguished clinical scientist and also as a generous mentor to aspiring colleagues. The annual award honors the lifetime achievement of outstanding medical researchers who are devoted to training junior investigators.

The Western Society for Clinical Investigation and Western Association of Physicians were founded to cultivate and enrich medical research in the western United States and western Canada. Its goal is to enhance the culture of academic medical research by encouraging promising young researchers and scientists to pursue careers in academic medicine.

In her own words Dr. Reusch summarizes her commitment to the development of physician scientists, "Throughout my career I have been dedicated to career development for physician scientists. The Western Medical Meetings (previously known as the Western Tri-societies meeting) is a regional meeting to support medical student, fellow and junior faculty research. This is a general meeting across many medical fields where junior people have a chance to give an oral presentation. I served as a counselor and chair for WAFMR and WSCI, national president of AFMR and worked diligently regionally and nationally on behalf of physician scientists and funding of translational research and translational scientists."

CONGRATULATIONS TO 2022 DRC PILOT & FEASIBILITY AWARDEE, NIKKI FARNSWORTH, PhD - CO-RECIPIENT OF JDRF AWARD

Dr. Nikki Farnsworth, an Assistant Professor in Chemical and Biological Engineering at the Colorado School of Mines, and her collaborator Dr. Holger Russ at the University of Florida have received \$900,000 from the Juvenile Diabetes Research Foundation to develop a targeted drug delivery system for the treatment and prevention of Type 1 Diabetes. This is a 3-year award that will investigate the translational potential of this novel therapy in humanized animal models of type 1 diabetes. This award will expand on the current work of Drs. Farnsworth and Russ from the DRC Pilot and Feasibility Award.



**Farnsworth and Russ Awarded JDRF Strategic Research Agreement
Award for “Engineered Nanocapsules for Targeted Drug Delivery to the
β-Cell”**

Dream Gala

April 21, 2023

Hyatt Regency Denver at Colorado Convention Center

JDRF

MOUNTAIN WEST CHAPTER

**DR. PETER GOTTLIEB SELECTED AS
MISSION CHAIR FOR JDRF DREAM GALA**



Dr. Peter Gottlieb is an internationally recognized type 1 diabetes (T1D) clinician and scientist. On April 21, at the 2023 Dream Gala, JDRF is celebrating Dr. Gottlieb's remarkable impact on T1D research and the leadership role he has played throughout his career in T1D advancements.

Dr. Gottlieb serves as the Orr Family Endowed Chair in Adult Diabetes at the University of Colorado, Barbara Davis Center for Diabetes (BDC). He is Chair of the Collaborative Mechanistic Studies Panel at TrialNet and a member of its Scientific Leadership Group. Over the course of his career, he has been funded as both a Principal Investigator and Co-Investigator by organizations including JDRF, NIH, NIDDK, the Helmsley Charitable Trust and industry-sponsored trials. A mentee of Dr. George Eisenbarth, Dr. Gottlieb is now himself an avid educator and reviewer, who mentors the next generation of scientists including several physicians at the Barbara Davis Center.

More information about this event can be found [here](#).

DIABETES RESEARCH CENTER EVENTS

Lifecourse Epidemiology of Adiposity & Diabetes (LEAD) Center

colorado school of public health

WITH DEPARTMENT OF EPIDEMIOLOGY AT COSPH, BARBARA DAVIS CENTER, COLORADO NUTRITION OBESITY RESEARCH CENTER (NORC), AND THE CENTER FOR AMERICAN INDIAN AND ALASKA NATIVE DIABETES TRANSLATION RESEARCH

Trends in type 2 diabetes - truth vs. diagnostic bias

March 20, 2023

12pm – 1pm

Location: Fulginiti Pavilion

****All those attending the in-person talk who have not received their booster will be required to continue to wear a mask and maintain physical distancing. ****

****Attendees who work entirely remote, and are unable to attend in-person, may request a Zoom link by emailing elizabeth.gordon@cuanschutz.edu.**

Speaker



Jaakko Tuomilehto, MD, MA (sociology), PhD

Professor Emeritus of Public Health
University of Helsinki, Finland

Jaakko Tuomilehto, MD, MA (sociology), PhD is Professor Emeritus of Public Health of University of Helsinki, Finland. His research interests include the epidemiology and prevention of non-communicable diseases such as diabetes, cardiovascular disease, cancer, and dementia. He has coordinated numerous scientific research projects and contributed many landmark studies and involved in epidemiological studies. His Finnish Diabetes Prevention Study demonstrated a 58% reduction in incidence type 2 diabetes with lifestyle intervention. This finding was later confirmed by similar trials from many countries. He developed a simple, non-laboratory type 2 diabetes risk score FINDRISC (FINnish Diabetes Risk Score) that has been validated and applied widely globally. He established the DECODE/DECODA (Diabetes Epidemiology-Collaborative analysis of Diagnostic Criteria in Europe/Asia) studies that have assessed the glucose criteria for the diagnosis of diabetes and the importance of postprandial glucose for detection and prognosis of disturbances of glucose regulation. He was the Principal Investigator of the WHO DIAMOND Project mapping the incidence of childhood T1D worldwide during the 1990s including >100 countries. In addition, he has carried out many other studies epidemiology, genetics, and



Diabetes Research Center
UNIVERSITY OF COLORADO ANSCHUTZ MEDICAL CAMPUS



RESEARCH IN PROGRESS SEMINAR SERIES SPRING 2023

Mondays at 12:00pm- BDC Main Conference Room 2104

Monday, January 16, 2023	MLK DAY
Monday, January 23, 2023	Emily Bates, PhD
Monday, January 30, 2023	Christopher Schaaf
Monday, February 6, 2023	Maria Hansen
Monday, February 13, 2023	Jefferson Knight, PhD
Monday, February 20, 2023	Presidents Day
Monday, February 27, 2023	nPOD Conference
Monday, March 6, 2023	Kathleen Woulfe, PhD
Monday, March 13, 2023	Week of Diabetes Day – NO RIP
Monday, March 20, 2023	Jaakko Tuomilehto, MD, PhD <i>(External Guest, Co-Sponsor with NORC)</i>
Monday, March 27, 2023	Halis (Kaan) Akturk, MD
Monday, April 3, 2023	Melike Sirlanci, PhD
Monday, April 10, 2023	Angela Mitchell, PhD
Monday, April 17, 2023	Catherine Nicholas
Monday, April 24, 2023	Erin Baschal, PhD
Monday, May 1, 2023	Kelly Vazquez, PhD
Monday, May 8, 2023	Nikki Farnsworth, PhD

Questions? Contact Lisbel Woods at Lisbel.Woods@CUAnschutz.edu

SPRING 2023 BDC & DRC DIABETES SPEAKER SERIES

Seminars will take place in person on Fridays at 12pm MT
All seminars will have a link provided for registration.

Questions? Contact:
Christy Vasey, christy.vasey@cuanschutz.edu , 303-724-9787

Friday, February 3, 2023	Sarah Lessard, MSc, PhD Assistant Professor	<i>Joslin Diabetes Harvard Medical School</i>
Friday, March 3, 2023	Hubert M. Tse, PhD Professor and Chair	<i>Department of Microbiology, Molecular Genetics, & Immunology University of Kansas Medical Center</i>
Friday, March 17, 2023	BDC Diabetes Day Symposium Keynote Speaker: Mark Atkinson, PhD Professor	Director, UF Diabetes Institute Departments of Pathology and Pediatrics University of Florida
Friday, March 31, 2023	Megan Levings, PhD Professor	<i>Department of Surgery Lead, Childhood Diseases BC Children's Hospital Research Institute</i>
Friday, April 14, 2023	Samuel Klein, MD Professor	<i>Chief, Division of Geriatrics and Nutritional Science Washington School of Medicine in St. Louis</i>
Friday, April 21, 2023	Todd Brusko, PhD Professor	<i>Department of Pathology, Immunology and Laboratory Medicine University of Florida</i>
Friday, May 12, 2023	Denise Feig, MD MSc, FRCPC Professor	<i>Obstetrics & Gynecology, and Health Policy, Management & Evaluation Head, Diabetes & Endocrinology in Pregnancy Program Mt Sinai Hospital, Toronto, Canada</i>

OPPORTUNITIES FOR FUNDING



JDRF Australia and The Leona M. and Harry B. Helmsley Charitable Trust

Two new RFPs, offering access to early-childhood clinical data and samples from the Global Platform for the Prevention of Autoimmune Diabetes (GPPAD) and the Environmental Determinants of Islet Autoimmunity (ENDIA) study groups have been launched by long-term partners of the Helmsley Type 1 Diabetes Program.

These precious resources are offered in conjunction with funding for pancreatic, immune, or metabolic research that may improve the understanding of T1D pathogenesis. More information can be found at the links below.

Letters of intent due April 7th for both RFPs.

More information can be found [here](#)

[Click Here to see all current JDRF RFAs](#)



RFA-DK-21-030: New Investigator Gateway Awards for Collaborative T1D Research (R03 Clinical Trial Not Allowed)

Application due date: **03/20/2023**

Note: Foreign applications are not eligible

More information can be found [here](#).

[Click Here to see all current NIH NIDDK RFAs](#)

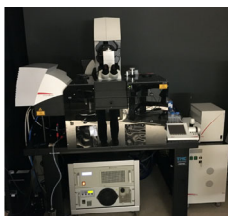


University of Colorado
Anschutz Medical Campus

[Click here to see current CU INTERNAL Limited Submission Funding Opportunities](#)

Have you considered using a DRC core service?

The DRC contains four biomedical cores that provide services and resources to DRC investigators. These cores are designed to facilitate and broaden CU Denver DRC research by expanding access to shared equipment, enhancing availability and training for emerging technologies, and allowing scientists to have greater access to clinical tissue and data.



Cell and Tissue Analysis

Access to state-of-the-art multi-color confocal microscopy, flow cytometry analysis and cell sorting services, and expert assistance for mass cytometry and ion-beam imaging technologies.

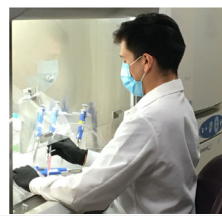
[Learn More about Cell & Tissue Analysis](#)



Clinical Resources

Access to an integrated, campus-wide, research registry enabling informatics-based clinical studies.

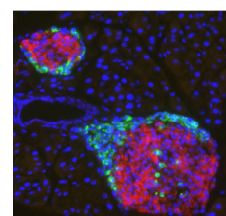
[Learn More about our Clinical Resources](#)



Disease Modeling

Access and training in stem cell technologies for in vitro human disease modeling of diabetes & molecular core services.

[Learn More about Disease Modeling](#)



Tissue Procurement & Processing

Access to islet isolation and transplantation services along with access to commonly used cell lines and diabetes-related histology techniques.

[Learn More about Tissue Procurement & Processing](#)

Want us to feature you or a colleague on an upcoming DRC newsletter? Have an important research update?

[Click Here to Submit a Story to the DRC Monthly Newsletter](#)



[Click Here to Follow us on Twitter](#)

Please remember to acknowledge support from the University of Colorado Diabetes Research Center and our associated cores by referencing NIDDK grant #P30-DK116073 in your presentations and publications.

[Click here to visit the DRC Website](#)

[Click Here to Subscribe to this Newsletter](#)

Contact Lisbel.Woods@CUAnschutz.edu with any questions or feedback about this newsletter

This email was sent to: lisbel.woods@cuanschutz.edu

This email was sent by the University of Colorado

[Manage your email preferences](#) | [Update your contact information](#)

Your CU ID:003f400000mHsmqAAC