

**FEBRUARY 2024**

### DIABETES DAY 2024 - CALL FOR ABSTRACTS

We are excited to announce that Diabetes Day will be on Friday March 29th, 2024. This year Jane Hoyt Buckner, M.D. President of the Benaroya Research Institute at Virginia Mason will be our keynote speaker. We will have a poster competition in which 2-4 abstracts will be selected for an oral presentation in morning sessions.

**SUBMIT YOUR ABSTRACT [HERE](#) by Thursday  
February 22nd, 2024  
(RSVP FORM WILL BE SENT OUT ON 2/23)**



### CONGRATULATIONS SARIT POLSKY, MD MPH T1D HERO AWARD RECIPIENT

Dr. Polsky was selected by the Children's Diabetes Foundation Guild for her tireless work and advocacy for people with Type 1 Diabetes, especially in the area of women's health and pregnancy. Her passion in advancing clinical care and research in these areas are evident to both patients and colleagues. Well done, Dr. Polsky!



### CONGRATULATIONS JORDAN JACOBELLI, PHD GATES GRUBSTAKE FUND GRANT RECIPIENT

Gates Institute has announced recipients of Gates Grubstake Fund grants, which provide support of up to \$350,000 for translational research projects - Dr. Jacobellis project is titled "Engineered CAR T Cells for Improved Solid Tumor Rejection"




### DIABETES COMMUNITY EVENTS



#### SPRING SEMINAR SCHEDULE:

2/14, 3/13, 4/10 & 5/8  
2:00 PM ET | 1:00 PM CT | 12:00 PM MT | 11:00 AM PT

<https://diabetes-virtual-seminar.org/>




**2024 Women's Health SYMPOSIUM**

**4.25 CME Credits & MOC Available**

**February 24, 2024**  
 8 a.m. - 1:30 p.m.

**Anschutz Health Sciences Building**  
 University of Colorado Anschutz Medical Campus  
 1890 N Revere Ct, Aurora, CO 80045

In-person and virtual options for attendance

Click [HERE](#) to see the Agenda - Register [HERE](#) for the event

## RESEARCH IN PROGRESS SEMINAR SERIES SPRING 2024

*Mondays at 12:00pm*  
BDC Main Conference Room 2104

DATE	PRESENTER
Monday, February 5, 2024	Claire Levitt
Monday, February 12, 2024	OPEN SLOT
Monday, February 19, 2024	Presidents Day
Monday, February 26, 2024	nPOD Conference
Monday, March 4, 2024	Nasha Rios-Guzman
Monday, March 11, 2024	Alicia White, MD
Monday, March 18, 2024	Spring Break
Monday, March 25, 2024	Angi Li
Monday, April 1, 2024	Nikki Farnsworth, PhD
Monday, April 8, 2024	Catherine Nicholas
Monday, April 15, 2024	Holly O'Donnell, PhD
Monday, April 22, 2024	Dylan Sarbaugh
Monday, April 29, 2024	Jordan Jacobelli, PhD
Monday, May 6, 2024	Maigen Bethea, PhD

## 2023-2024 BDC & DRC DIABETES SPEAKER SERIES

Seminars will take place in person on Fridays at 12pm MT  
All seminars will have a link provided for registration.

Questions? Contact:  
Christy Vasey, [christy.vasey@cuanschutz.edu](mailto:christy.vasey@cuanschutz.edu), 303-724-9787

Friday, January 19, 2024	<b>Maria J. Redondo, MD, PhD, MPH</b> Professor	<i>Pediatric Diabetes &amp; Endocrinology, Baylor College of Medicine</i>
Friday, February 2, 2024	<b>Emily K. Sims, MD</b> Associate Professor	<i>Pediatric Endocrinology and Diabetology Indiana University School of Medicine Center for Diabetes and Metabolic Diseases</i>
Friday, February 16, 2024 *joint visit with Immunology*	<b>Donna L. Farber, PhD</b> Professor	<i>Director, Human Tissue Immunity and Disease Initiative Chief, Division of Surgical Sciences Columbia University</i>
Friday, March 1, 2024	<b>Lukas K. Tamm, PhD</b> Professor	<i>Chair, Department of Molecular Physiology and Biological Physics Director, Center for Membrane and Cell Physiology University of Virginia School of Medicine</i>
Friday, March 15, 2024 Gossard Forum	<b>Florence Brown, MD</b> Assistant Professor	<i>Co-Director Joslin and BIDMC Diabetes in Pregnancy Program Harvard Medical School</i>
Friday, March 29, 2024	<b>BDC Diabetes Day Symposium</b> Keynote Speaker: <b>Jane Buckner, MD</b>	<i>Director, Translational Research Program President- Benaroya Research Institute at Virginia Mason</i>
Friday, April 12, 2024	<b>Lu Cai, MD, PhD</b> Professor	<i>Director, Pediatric Research Institute University of Louisville School of Medicine</i>
Friday, April 26, 2024	<b>Roland Tisch, PhD</b> Professor	<i>Microbiology and Immunology University of North Carolina, Chapel Hill</i>
Friday, May 10, 2024	<b>Senta Georgia, PhD</b> Assistant Professor	<i>Endocrinology, Diabetes and Metabolism Keck School of Medicine, University of Southern California</i>

## JOB POSTINGS & OPPORTUNITIES FOR FUNDING



[Click Here to see all current JDRF RFAs](#)



### JOB POSTING

The Division of Diabetes, Endocrinology and Metabolic Diseases (DDEMD) currently has two job openings for Program Directors in Diabetes Clinical Research. Applications will be accepted via USA jobs beginning on **October 30, 2023**. [Click here to learn more.](#)

### FUNDING OPPORTUNITY

The NOFO on the new Human Islet Research Network Consortium on Modeling Autoimmune Diabetes is now published. This new consortium aims to support novel in vitro and in vivo models of human T1D biology, and looks to apply these models toward testing disease interventions.

Click [here](#) to learn more

**Application due date: March 20, 2024**  
**Earliest grant start date: December 2024**

Please contact Dr. Hwa for questions:  
Albert J. Hwa, PhD  
Program Director, Islet Biology and Regenerative Medicine  
[albert.hwa@nih.gov](mailto:albert.hwa@nih.gov)

[Click Here to see all current NIH NIDDK RFAs](#)



### FUNDING OPPORTUNITY

Tom Beatson came to Joslin Diabetes Center for the 50 year Medalist Study, which he supported at Joslin when he was alive. His Foundation wishes to continue to support studies that can help people with type 1 diabetes.

For this year's funding of the Beatson Foundation. The Foundation will be funding up to 5 grants with each at **\$125,000/year for 2 years** for direct support, with an additional 10% for IDC. The topics of the research are limited to type 1 diabetes and its related complications. The deadline for submission is **Feb. 16, 2024** and the results of the selection process will be announced in May 2024. Application will be accepted from all academic and research faculties including outstanding biomedical researchers with academic rank of a) Senior Instructors (after at least two years at this level); b) Assistant Professor or higher from accredited institutions

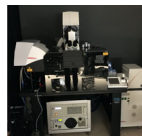
Please [visit the website here](#) for more information regarding the many grants that the Beatson Foundation has supported for the last few years and the process for submission of the application.



[Click here to see current CU INTERNAL Limited Submission Funding Opportunities](#)

## Have you considered using a DRC core service?

The DRC contains four biomedical cores that provide services and resources to DRC investigators. These cores are designed to facilitate and broaden CU Denver DRC research by expanding access to shared equipment, enhancing availability and training for emerging technologies, and allowing scientists to have greater access to clinical tissue and data.



#### Cell and Tissue Analysis

Access to state-of-the-art multi-color confocal microscopy, flow cytometry analysis and cell sorting services, and expert assistance for mass cytometry and ion-beam imaging technologies.

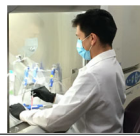
[Learn More about Cell & Tissue Analysis](#)



#### Clinical Resources

Access to an integrated, campus-wide, research registry enabling informatics-based clinical studies.

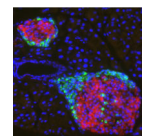
[Learn More about our Clinical Resources](#)



#### Disease Modeling

Access and training in stem cell technologies for in vitro human disease modeling of diabetes & molecular core services.

[Learn More about Disease Modeling](#)



#### Tissue Procurement & Processing

Access to islet isolation and transplantation services along with access to commonly used cell lines and diabetes-related histology techniques.

[Learn More about Tissue Procurement & Processing](#)



## DRC WELCOMING NEW MEMBERS

### APPLY NOW!

Now is a great time to consider applying to become a DRC Member. We welcome members who are broadly engaged in all aspects of diabetes research, including complications associated with diabetes. As a member, you would get a discount for core usage and prioritized services.

Browse our website to learn more:

<https://medschool.cuanschutz.edu/diabetes-research-center>



Here is a list of our current membership criteria

1. Full-time University of Colorado faculty
2. Pursuing research broadly relating to diabetes or metabolism that is funded by the NIH, ADA, JDRF or other diabetes-related funding source
3. Current recipients of DRC Pilot & Feasibility Awards, regardless of funding source
4. New faculty (within 5 years of first faculty appointment) who are developing independent diabetes-related research programs

If you are interested in joining as a member please click [HERE](#) to fill out an application.

Want us to feature you or a colleague on an upcoming DRC newsletter? Have an important research update?

[Click Here to Submit a Story to the DRC Monthly Newsletter](#)



[Click Here to Follow us on X](#)

**Please remember to acknowledge support from the University of Colorado Diabetes Research Center and our associated cores by referencing NIDDK grant #P30-DK116073 in your presentations and publications.**

[Click here to visit the DRC Website](#)

[Click Here to Subscribe to this Newsletter](#)

Contact [Lisbel.Woods@CUAnschutz.edu](mailto:Lisbel.Woods@CUAnschutz.edu) with any questions or feedback about this newsletter

This email was sent to: [lisbel.woods@cuanschutz.edu](mailto:lisbel.woods@cuanschutz.edu)

This email was sent by the University of Colorado  
13001 E 17th Place Aurora, CO, 80045, US

[Manage your email preferences](#) | [Update your contact information](#)

Your CU ID:003f400000mHsmqAAC