

FEBRUARY 2023

WELCOME BACK DRC!

Dear DRC Members,

Welcome to the first DRC Newsletter of 2023. It is hard to believe that we are already approaching our 4th year of DRC funding! We have an excellent line up of speakers for this year's weekly Monday Research in Progress series and biweekly Friday Diabetes Seminar series. **Diabetes Day will be held on March 24, 2023** where we will welcome Dr. Mark Atkinson as our John Hutton Memorial Keynote Speaker. We hope you and your trainees will join us for the talks and poster sessions at this event. Please visit our [DRC website](#) for more information. We also welcome your input for our monthly newsletter – please send us information about your awards, grants, accomplishments, and anything we can share with our diabetes community. Your feedback on our DRC programs and research cores are also appreciated. We hope everyone has a productive and rewarding 2023.



Regards,
Lori
DRC Director

DIABETES DAY 2023



We are excited to announce that Diabetes Day will be on Friday March 24, 2023. This year, Dr. Mark Atkinson from the University of Florida will be our keynote speaker.

We will have a poster competition in which 2-4 abstracts will be selected for an oral presentation in morning sessions.

Submit your abstract by following this link: <https://redcap.link/bmwdhkc7> by Friday, February 24th 5pm MST.

Please send this information to anyone who you think may be interested in submitting an abstract.

2021 PILOT & FEASIBILITY AWARDEE: LESSONS & TRIUMPHS JORDAN JACOBELLI, PHD

How did the P&F award help your research?

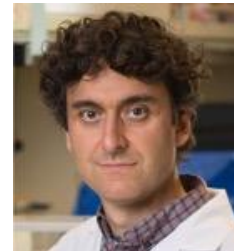
My research is focused on how lymphocytes become activated and migrate to different anatomical sites. The DRC P&F award was instrumental in allowing me to expand my research program to include type 1 diabetes. For this project we are working to understand how the lymphocyte cytoskeleton enables self-reactive T cells to enter the pancreatic islets and damage pancreatic beta cells.

Do you believe this award helped develop you professionally? If so, how?

This award has helped by allowing me to generate important data that will be used to further expand my research into type 1 diabetes and to apply for larger grants to continue this line of research. The research done for the DRC P&F award has also prompted me to interact more with type 1 diabetes researchers.

What advice would you give to yourself in April 2020, when you first received this award? And/or What were the major lessons you learned in the last 2 years?

A piece of advice that I would give myself at the beginning of this project is, in addition to working on inhibiting the function of self-reactive T cells, to also include strategies to enhance regulatory T cell accumulation and function in pancreatic islets as a complementary approach from the start of my studies.



DIABETES RESEARCH CENTER EVENTS

Lifecourse Epidemiology of Adiposity & Diabetes (LEAD) Center

colorado school of public health

WITH DEPARTMENT OF EPIDEMIOLOGY AT COSPH, BARBARA DAVIS CENTER, COLORADO
NUTRITION OBESITY RESEARCH CENTER (NORC), AND THE CENTER FOR AMERICAN
INDIAN AND ALASKA NATIVE DIABETES TRANSLATION RESEARCH

Trends in type 2 diabetes - truth vs. diagnostic bias

March 20, 2023

12pm – 1pm

Location: Fulginiti Pavilion

****All those attending the in-person talk who have not received their booster will be required to continue to wear a mask and maintain physical distancing. ****

***Attendees who work entirely remote, and are unable to attend in-person, may request a Zoom link by emailing elizabeth.gordon@cuanschutz.edu.*

Speaker



Jaakko Tuomilehto, MD, MA (sociology), PhD
Professor Emeritus of Public Health
University of Helsinki, Finland

Jaakko Tuomilehto, MD, MA (sociology), PhD is Professor Emeritus of Public Health of University of Helsinki, Finland. His research interests include the epidemiology and prevention of non-communicable diseases such as diabetes, cardiovascular disease, cancer, and dementia. He has coordinated numerous scientific research projects and contributed many landmark studies and involved in epidemiological studies. His Finnish Diabetes Prevention Study demonstrated a 58% reduction in incidence type 2 diabetes with lifestyle intervention. This finding was later confirmed by similar trials from many countries. He developed a simple, non-laboratory type 2 diabetes risk score FINDRISC (FINnish Diabetes Risk Score) that has been validated and applied widely globally. He established the DECODE/DECODA (Diabetes Epidemiology-Collaborative analysis of Diagnostic Criteria in Europe/Asia) studies that have assessed the glucose criteria for the diagnosis of diabetes and the importance of postprandial glucose for detection and prognosis of disturbances of glucose regulation. He was the Principal Investigator of the WHO DIAMOND Project mapping the incidence of childhood T1D worldwide during the 1990s including >100 countries. In addition, he has carried out many other studies epidemiology, genetics, and complications in type 1 diabetes.

Lifecourse Epidemiology of Adiposity & Diabetes (LEAD) Center
CU Anschutz Medical Campus,
Anschutz Health Sciences Building (AHSB)
1890 N Revere Ct, Suite 1002, Box F426
Aurora, CO 80045

coloradosph.cuanschutz.edu/lead



RESEARCH IN PROGRESS SEMINAR SERIES SPRING 2023

Mondays at 12:00pm- BDC Main Conference Room 2104

Monday, January 16, 2023	MLK DAY
Monday, January 23, 2023	Emily Bates, PhD
Monday, January 30, 2023	Christopher Schaaf
Monday, February 6, 2023	Maria Hansen
Monday, February 13, 2023	Jefferson Knight, PhD
Monday, February 20, 2023	Presidents Day
Monday, February 27, 2023	nPOD Conference
Monday, March 6, 2023	Kathleen Woulfe, PhD
Monday, March 13, 2023	Week of Diabetes Day – NO RIP
Monday, March 20, 2023	Jaakko Tuomilehto, MD, PhD (External Guest, Co-Sponsor with NORC)
Monday, March 27, 2023	Halis (Kaan) Akturk, MD
Monday, April 3, 2023	Melike Sirlanci, PhD
Monday, April 10, 2023	Angela Mitchell, PhD
Monday, April 17, 2023	Catherine Nicholas
Monday, April 24, 2023	Erin Baschal, PhD
Monday, May 1, 2023	Kelly Vazquez, PhD
Monday, May 8, 2023	Nikki Farnsworth, PhD

Questions? Contact Lisbel Woods at Lisbel.Woods@CUAnschutz.edu

SPRING 2023 BDC & DRC DIABETES SPEAKER SERIES

Seminars will take place in person on Fridays at 12pm MT
All seminars will have a link provided for registration.

Questions? Contact:
Christy Vasey, christy.vasey@cuanschutz.edu, 303-724-9787

Friday, February 3, 2023	Sarah Lessard, MSc, PhD Assistant Professor	Joslin Diabetes Harvard Medical School
Friday, March 3, 2023	Hubert M. Tse, PhD Professor and Chair	Department of Microbiology, Molecular Genetics, & Immunology University of Kansas Medical Center
Friday, March 17, 2023	BDC Diabetes Day Symposium Keynote Speaker: Mark Atkinson, PhD Professor	Director, UF Diabetes Institute Departments of Pathology and Pediatrics University of Florida
Friday, March 31, 2023	Megan Levings, PhD Professor	Department of Surgery Lead, Childhood Diseases BC Children's Hospital Research Institute
Friday, April 14, 2023	Samuel Klein, MD Professor	Chief, Division of Geriatrics and Nutritional Science Washington School of Medicine in St. Louis
Friday, April 21, 2023	Todd Brusko, PhD Professor	Department of Pathology, Immunology and Laboratory Medicine University of Florida
Friday, May 12, 2023	Denise Feig, MD MSc, FRCPC Professor	Obstetrics & Gynecology, and Health Policy, Management & Evaluation Head, Diabetes & Endocrinology in Pregnancy Program Mt Sinai Hospital, Toronto, Canada

OPPORTUNITIES FOR FUNDING



[Click Here to see all current NIH NIDDK RFAs](#)

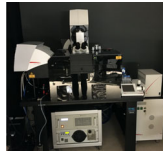


University of Colorado
Anschutz Medical Campus

[Click here to see current CU INTERNAL Limited Submission Funding Opportunities](#)

Have you considered using a DRC core service?

The DRC contains four biomedical cores that provide services and resources to DRC investigators. These cores are designed to facilitate and broaden CU Denver DRC research by expanding access to shared equipment, enhancing availability and training for emerging technologies, and allowing scientists to have greater access to clinical tissue and data.



Cell and Tissue Analysis

Access to state-of-the-art multi-color confocal microscopy, flow cytometry analysis and cell sorting services, and expert assistance for mass cytometry and ion-beam imaging technologies.

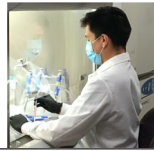
[Learn More about Cell & Tissue Analysis](#)



Clinical Resources

Access to an integrated, campus-wide, research registry enabling informatics-based clinical studies.

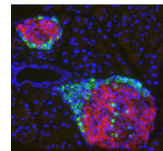
[Learn More about our Clinical Resources](#)



Disease Modeling

Access and training in stem cell technologies for in vitro human disease modeling of diabetes & molecular core services.

[Learn More about Disease Modeling](#)



Tissue Procurement & Processing

Access to islet isolation and transplantation services along with access to commonly used cell lines and diabetes-related histology techniques.

[Learn More about Tissue Procurement & Processing](#)

Want us to feature you or a colleague on an upcoming DRC newsletter? Have an important research update?

[Click Here to Submit a Story to the DRC Monthly Newsletter](#)



[Click Here to Follow us on Twitter](#)

Please remember to acknowledge support from the University of Colorado Diabetes Research Center and our associated cores by referencing NIDDK grant #P30-DK116073 in your presentations and publications.

[Click here to visit the DRC Website](#)

[Click Here to Subscribe to this Newsletter](#)

Contact Lisbel.Woods@CUAnschutz.edu with any questions or feedback about this newsletter

This email was sent to: lisbel.woods@cuanschutz.edu

This email was sent by the University of Colorado

[Manage your email preferences](#) | [Update your contact information](#)

Your CU ID: 003f400000mHsmqAAC