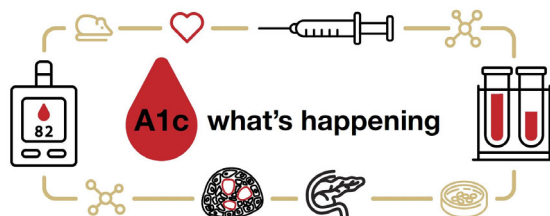


[View in Browser](#)



DECEMBER 2023

ANNOUNCING THE 2024 PILOT & FEASIBILITY AWARD CYCLE

We are thrilled to announce our 2024 Pilot & Feasibility Award Cycle. The Colorado DRC P&F Program funds diabetes researchers distributed across the spectrum of basic science, translational, clinical and health disparities research who investigate T1D, T2D, and/or diabetes complications and is a key element in recruiting and training promising diabetes research scientists. Applications will be considered from both junior and established investigators.



All details and links for the below events/forms can be found [here](#)

Intent to Apply Due: 12/8/23 (LOI DEADLINE EXTENDED)

Informational Zoom Sessions: 12/12/23 4PM, 12/15/23 10AM & 1/9/24 4PM

Full Application Due: 1/16/24
Award Start Date: 4/1/24

P&F Program Directors: Jane Reusch, MD & Paul Rozance, MD



2023 PILOT & FEASIBILITY AWARDEE: LESSONS & TRIUMPHS - HOLLY O'DONNELL, PhD

How did the P&F award help your research?

The P&F award has provided me with protected time, strong mentorship, and statistical support to analyze data on the child psychological experience in the Autoimmunity Screening in Kids (ASK) study. Understanding these data is critical as there has been a significant increase in universal screening for islet autoantibodies that indicate an individual is at risk for type 1 diabetes. The results I disseminate from this P&F award will have important implications as researchers and clinicians design universal screening programs.

Do you believe this award helped develop you professionally? If so, how?

Absolutely! I've had opportunities to present my findings at an international conference and a national symposium. Both these settings led to connections with researchers in this field who may be potential future collaborators. In addition, the P&F grant allowed me to significantly strengthen my career development proposal as I was able to integrate findings from the P&F award as pilot data in my career development award submission.

What advice would you give to yourself when you first received this award?

I wish I would have budgeted more money in the first year to present results. I anticipated it would take me longer than it did before I was ready to share my data. There is still a lot of work to be done but I was surprised how quickly I had some findings that were ready to disseminate.



THANKS TO ALL WHO PARTICIPATED IN THE ANNUAL DIABETES DAY PHOTO!



BDC FEATURED ON CU ANSCHUTZ TODAY

"Call for Type 1 Diabetes Screening Gains Momentum": Breakthrough drug fuels interest in early testing, shown to reduce trauma and complications

Congratulations to the featured experts: Drs. Marian Rewers & Kimberly Simmons

Read the full article [here](#)



FREE COPY OF ADA STANDARDS OF CARE

The Standards of Care is updated by the ADA's Professional Practice Committee, which performs an extensive clinical diabetes literature search, supplemented with input from ADA staff and the medical community at large. The Standards of Care is reviewed by the ADA's clinical staff leadership and is reviewed and approved by the ADA's Board of Directors. I hope you find this free resource as valuable as we do. Click [here](#) to receive your free copy.

DIABETES COMMUNITY EVENTS



Upcoming Seminar

Wednesday, December 13th, 2023
2:00 PM ET | 1:00 PM CT | 12:00 PM MT | 11:00 AM PT

Details coming soon.

[Join the Webinar](#)

Join us here: <https://diabetes-virtual-seminar.org/>

RESEARCH IN PROGRESS SEMINAR SERIES

FALL 2023

*Mondays at 12:00pm
BDC Main Conference Room 2104*

DATE	PRESENTER
Monday, December 4, 2023	CANCELLED
Monday, December 11, 2023	Maria Hansen
Monday, December 18, 2023	Holiday Break
Monday, December 25, 2023	Holiday Break

2023-2024 BDC & DRC DIABETES SPEAKER SERIES

Seminars will take place in person on Fridays at 12pm MT
All seminars will have a link provided for registration.

Questions? Contact:
Christy Vasey, christy.vasey@cuanschutz.edu , 303-724-9787

Friday, January 19, 2024	Maria J. Redondo, MD, PhD, MPH Professor	<i>Pediatric Diabetes & Endocrinology, Baylor College of Medicine</i>
Friday, February 2, 2024	Emily K. Sims, MD Associate Professor	<i>Pediatric Endocrinology and Diabetology Indiana University School of Medicine Center for Diabetes and Metabolic Diseases</i>
Friday, February 16, 2024 <i>*joint visit with Immunology*</i>	Donna L. Farber, PhD Professor	<i>Director, Human Tissue Immunity and Disease Initiative Chief, Division of Surgical Sciences Columbia University</i>
Friday, March 1, 2024	Lukas K. Tamm, PhD Professor	<i>Chair, Department of Molecular Physiology and Biological Physics Director, Center for Membrane and Cell Physiology University of Virginia School of Medicine</i>
Friday, March 15, 2024 Gossard Forum	Florence Brown, MD Assistant Professor	<i>Co-Director Joslin and BIDMC Diabetes in Pregnancy Program Harvard Medical School</i>
Friday, March 29, 2024	BDC Diabetes Day Symposium Keynote Speaker: Jane Buckner, MD	<i>Director, Translational Research Program President- Benaroya Research Institute at Virginia Mason</i>
Friday, April 12, 2024	Lu Cai, MD, PhD Professor	<i>Director, Pediatric Research Institute University of Louisville School of Medicine</i>
Friday, April 26, 2024	Roland Tisch, PhD Professor	<i>Microbiology and Immunology University of North Carolina, Chapel Hill</i>
Friday, May 10, 2024	Senta Georgia, PhD Assistant Professor	<i>Endocrinology, Diabetes and Metabolism Keck School of Medicine, University of Southern California</i>

JOB POSTINGS & OPPORTUNITIES FOR FUNDING



[Click Here to see all current JDRF RFAs](#)



JOB POSTING

The Division of Diabetes, Endocrinology and Metabolic Diseases (DDEMD) currently has two job openings for Program Directors in Diabetes Clinical Research. Applications will be accepted via USA jobs beginning on **October 30, 2023**. [Click here](#) to learn more.

FUNDING OPPORTUNITY

The NOFO on the new Human Islet Research Network Consortium on Modeling Autoimmune Diabetes is now published. This new consortium aims to support novel in vitro and in vivo models of human T1D biology, and looks to apply these models toward testing disease interventions.

[Click here](#) to learn more

Application due date: March 20, 2024
Earliest grant start date: December 2024

Please contact Dr. Hwa for questions:
Albert J. Hwa, PhD
Program Director, Islet Biology and Regenerative Medicine
albert.hwa@nih.gov

[Click Here to see all current NIH NIDDK RFAs](#)



FUNDING OPPORTUNITY

2024 HR-pQCT Seed Grant Program

This High-Resolution peripheral Quantitative Computed Tomography (HR-pQCT) device can be used by clinical researchers to non-invasively acquire measures of volumetric bone mineral density and several aspects of bone quality/microarchitecture. This scanner utilizes a very low radiation dose (5uSv per scan) so it can be used for studies performed in adult, adolescent, and pediatric populations. More information about the device, including pricing, can be found on the CCTSI website.

DEADLINE: 2/2/2024

[Click HERE](#) to learn more

[Click here to see current CU INTERNAL Limited Submission Funding Opportunities](#)



BEATSON FOUNDATION



Joslin Diabetes

FUNDING OPPORTUNITY

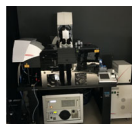
Tom Beatson came to Joslin Diabetes Center for the 50 year Medalist Study, which he supported at Joslin when he was alive. His Foundation wishes to continue to support studies that can help people with type 1 diabetes.

For this year's funding of the Beatson Foundation. The Foundation will be funding up to 5 grants with each at **\$125,000/year for 2 years** for direct support, with an additional 10% for IDC. The topics of the research are limited to type 1 diabetes and its related complications. The deadline for submission is **Feb. 16, 2024** and the results of the selection process will be announced in May 2024. Application will be accepted from all academic and research faculties including outstanding biomedical researchers with academic rank of a) Senior Instructors (after at least two years at this level); b) Assistant Professor or higher from accredited institutions

Please [visit the website here](#) for more information regarding the many grants that the Beatson Foundation has supported for the last few years and the process for submission of the application.

Have you considered using a DRC core service?

The DRC contains four biomedical cores that provide services and resources to DRC investigators. These cores are designed to facilitate and broaden CU Denver DRC research by expanding access to shared equipment, enhancing availability and training for emerging technologies, and allowing scientists to have greater access to clinical tissue and data.



Cell and Tissue Analysis
Access to state-of-the-art multi-color confocal microscopy, flow cytometry analysis and cell sorting services, and expert assistance for mass cytometry and ion-beam imaging technologies.

[Learn More about Cell & Tissue Analysis](#)



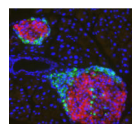
Clinical Resources
Access to an integrated, campus-wide, research registry enabling informatics-based clinical studies.

[Learn More about our Clinical Resources](#)



Disease Modeling
Access and training in stem cell technologies for in vitro human disease modeling of diabetes & molecular core services.

[Learn More about Disease Modeling](#)



Tissue Procurement & Processing
Access to islet isolation and transplantation services along with access to commonly used cell lines and diabetes-related histology techniques.

[Learn More about Tissue Procurement & Processing](#)




DRC WELCOMING NEW MEMBERS

APPLY NOW!

Now is a great time to consider applying to become a DRC Member. We welcome members who are broadly engaged in all aspects of diabetes research, including complications associated with diabetes. As a member, you would get a discount for core usage and prioritized services.

Browse our website to learn more:
<https://medschool.cuanschutz.edu/diabetes-research-center>

Here is a list of our current membership criteria

1. Full-time University of Colorado faculty
2. Pursuing research broadly relating to diabetes or metabolism that is funded by the NIH, ADA, JDRF or other diabetes-related funding source
3. Current recipients of DRC Pilot & Feasibility Awards, regardless of funding source
4. New faculty (within 5 years of first faculty appointment) who are developing independent diabetes-related research programs

If you are interested in joining as a member please click [HERE](#) to fill out an application.

Want us to feature you or a colleague on an upcoming DRC newsletter? Have an important research update?

Click Here to Submit a Story to the DRC Monthly Newsletter



Click Here to Follow us on X

Please remember to acknowledge support from the University of Colorado Diabetes Research Center and our associated cores by referencing NIDDK grant #P30-DK116073 in your presentations and publications.

Click here to visit the DRC Website

Click Here to Subscribe to this Newsletter

Contact Lisbel.Woods@CUAnschutz.edu with any questions or feedback about this newsletter

This email was sent to: lisbel.woods@cuanschutz.edu
 This email was sent by the University of Colorado
 13001 E 17th Place Aurora, CO, 80045, US
[Manage your email preferences](#) | [Update your contact information](#)
 Your CU ID:003f40000mHsmqAAC