

DECEMBER 2022

**2021 PILOT & FEASIBILITY AWARDEE:
LESSONS & TRIUMPHS - KALIE TOMMERDAHL, MD**



How did the P&F award help your research?

The University of Colorado Diabetes Research Center Pilot & Feasibility Award has been instrumental to my success as an early career investigator in diabetes clinical and translational research. I am an Assistant Professor of Pediatric Endocrinology studying the effects of combining diabetes technologies and pharmacologic therapy on insulin sensitivity and kidney and cardiac function in youth with type 1 diabetes and the support of this Pilot and Feasibility Award has allowed me to pursue a study evaluating the combined effects of automated insulin delivery systems and the insulin sensitizing agent metformin in the prevention of kidney and cardiac complications in youth with type 1 diabetes, a previously unstudied topic. I am beyond grateful for the University of Colorado Diabetes Research Center's support in allowing me to pursue this cutting-edge research.

Do you believe this award helped develop you professionally? If so, how?

Yes, this Pilot and Feasibility Award has advanced my professional development significantly by providing me with the support to fully pursue a career in diabetes clinical and translational research at the University of Colorado. Through receipt of this competitive Award, I have been exposed to a network of like-minded diabetes researchers who are also involved with the Diabetes Research Center and have had the opportunity to form productive collaborations that I otherwise would have never achieved. In addition, not only has this Pilot and Feasibility Award directly supported my research methods and made my study possible, it has also allowed me to hire a Professional Research Assistant, enroll in the University of Colorado's Master of Clinical Science program to expand my understanding of clinical research practices, and network with potential local, national, and international collaborators at conferences.

**What advice would you give to yourself in April 2020, when you first received this award?
And/or What were the major lessons you learned in the last 2 years?**

If I had the opportunity to give myself advice at the start of my Pilot & Feasibility Award period, I would tell myself to trust in the research process and enjoy the journey! The development of skills and knowledge is so incredibly important for the advancement of a career in clinical and translational research, and these are the core tenants of all Pilot and Feasibility projects. It is also important to continually acknowledge the growth that you have achieved along the way in your research journey and use this as fuel to propel yourself forward.

**2022 WESTERN REGION ISLET STUDY
GROUP (WRISG) MEETING**

November 28-29, 2022 - Pasadena, CA

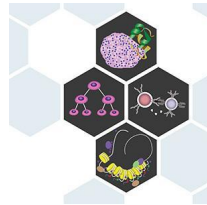
The 2022 Western Region Islet Study Group (WRISG) meeting aims to bring together trainees and faculty studying islet biology to share their discoveries, enhance interactions, and encourage collaboration in diabetes research across western Canada and the USA.

In 2019, the WRISG John Hutton award for a promising early stage investigator was established to honor his memory. This award is supported by the Barbara Davis Center for Diabetes. This year the selected awardee was Senta K. Georgia, Ph.D. of Children's Hospital Los Angeles for "The Effect of Challenging Paradigms in Beta Cell Biology".

Overall, this meeting was an overwhelming success which sparked



interest and passion for islet biology, it was an opportunity to learn and network for all who attended.



2022 RACHMIEL LEVINE-ARTHUR RIGGS DIABETES RESEARCH SYMPOSIUM

November 29 - December 2, 2022 - Pasadena, CA

This year's research symposium was well attended, kudos to all of the presenters, especially those from the BDC who are listed below, along with details of their presentations/participation.

Lori Sussel, PhD - "LncRNAs and alternative splicing in glucose homeostasis" during the RNA Biology in Diabetes session.

Richard Benninger, PhD - "Beta cell functional heterogeneity" during the Functional Imaging of the Pancreas session.

Rachel Friedman, PhD - "Myeloid cell function in islet autoimmunity: Gatekeepers, instigators, and peacekeepers" during the Autoimmunity of T1D session.

Mia Smith, DVM, PhD - "B cells in T1D: Identifying the elusive diabetogenic B cell and its function" during the Autoimmunity of T1D session.

Marian Rewers, MD, PhD - Participant in the Debate "Current Challenges in T1D Prevention"



Diabetes Research Center

UNIVERSITY OF COLORADO ANSCHUTZ MEDICAL CAMPUS



RESEARCH IN PROGRESS SEMINAR SERIES FALL 2022

Mondays at 12:00pm

BDC Main Conference Room 2104

Monday, September 12, 2022	Prashanth Francis, MD PhD
Monday, September 19, 2022	Dylan Sarbaugh
Monday, September 26, 2022	Mia Smith, PhD
Monday, October 3, 2022	James Scott-Browne, PhD
Monday, October 10, 2022	Yan Li, PhD (Guest Speaker)
Monday, October 17, 2022	Srividhya Iyer, PhD
Monday, October 24, 2022	Jordan Jacobelli, PhD
Monday, October 31, 2022	Laurel Messer, PhD
Monday, November 7, 2022	Kalie Tommerdahl, MD
Monday, November 14, 2022	Roberto Castro-Gutierrez
Monday, November 21, 2022	Thanksgiving Break
Monday, November 28, 2022	City of Hope Diabetes Research Symposium
Monday, December 5, 2022	Rachel Friedman, PhD
Monday, December 12, 2022	Yong Kim, PhD
Monday, December 19, 2022	Holiday Break
Monday, December 26, 2022	Holiday Break

Questions? Contact Lisbel Woods at Lisbel.Woods@CUAnschutz.edu

DRC SPEAKER SERIES ANNOUNCED FOR 2022-2023 ACADEMIC YEAR, PLEASE JOIN US!

All seminars will take place in the Shore Family Auditorium unless otherwise noted in green.

2022-2023 DRC Diabetes Speaker Series Barbara Davis Center for Diabetes Series Roster

Seminars will take place in person on Fridays at 12pm MT
All seminars will have a link provided for registration.

For administrative assistance: Christy Vasey, christy.vasey@cuanschutz.edu, 303-724-9787

Friday, September 9, 2022 <i>Fulginiti Pavilion</i>	Bethany Cummings, DVM, PhD Associate Professor	Department of Surgery UC Davis
Friday, September 23, 2022	Dirk Homann, MD Professor	Icahn School of Medicine Mount Sinai
Friday, October 7, 2022	Sarah Lessard, MSc, PhD Assistant Professor	Joslin Diabetes Harvard Medical School
Friday, October 21, 2022	Marissa Brissova, PhD Research Professor of Medicine	Director, Islet Procurement and Analysis Core Director, Human Islet Phenotyping Program of iDP Vanderbilt University
Friday, November 4, 2022	Rachel Bonami, PhD Assistant Professor of Medicine	Division of Rheumatology and Immunology Pathology, Microbiology, and Immunology Vanderbilt University Medical Center
Friday, November 18, 2022	Matthew L. Bettini, PhD Associate Professor	Department of Pathology Division of Microbiology and Immunology University of Utah
Friday, December 2, 2022 <i>Fulginiti Pavilion</i>	TBD	
Friday, January 6, 2023	Leonardo M.R. Ferreira, PhD Assistant Professor	Microbiology and Immunology Regenerative Medicine and Cell Biology Medical University of South Carolina
Friday, January 20, 2023	Rebecca L. Hull, PhD Research Professor	Director, Cellular and Molecular Imaging Core Division of Metabolism, Endocrinology and Nutrition University of Washington
Friday, February 3, 2023	TBD	
Friday, February 17, 2023	Todd Brusko, PhD Professor	Department of Pathology, Immunology and Laboratory Medicine University of Florida Diabetes Institute (UFDI)
Friday, March 3, 2023	Hubert M. Tse, PhD Professor	Comprehensive Diabetes Center Heersink School of Medicine University of Alabama at Birmingham
Friday, March 17, 2023	BDC Diabetes Day Symposium Keynote Speaker: Mark Atkinson, PhD Professor	Director, UF Diabetes Institute Departments of Pathology and Pediatrics University of Florida
Friday, March 31, 2023	Megan Levings, PhD Professor	Department of Surgery Lead, Childhood Diseases BC Children's Hospital Research Institute
Friday, April 14, 2023	Samuel Klein, MD Professor	Chief, Division of Geriatrics and Nutritional Science Washington School of Medicine in St. Louis
Friday, April 28, 2023	Joana Almada, PhD Research Assistant Professor	University of Miami Miller School of Medicine
Friday, May 12, 2023	Denise Feig, MD MSc, FRCPC Professor	Obstetrics & Gynecology, and Health Policy, Management & Evaluation Head, Diabetes & Endocrinology in Pregnancy Program Mt Sinai Hospital, Toronto, Canada

JOB POSTINGS



Barbara Davis Center for Diabetes
UNIVERSITY OF COLORADO ANSCHUTZ MEDICAL CAMPUS

WE ARE HIRING!

The Barbara Davis Center for Diabetes has posted an Assistant or Associate Professor (Open Rank) Tenure Track Position. This faculty member will report to the Director of the BDC Basic and Translational research division, Dr. Lori Sussel.

Please click [here](#) for more information and to apply.

UC San Diego
School of Medicine

Assistant Professor - Chancellor's Joint Initiative: Pharmacology/Chemistry & Biochemistry

The focus of this search is in the broad areas of Metabolism, Mitochondria, and Human Diseases. Successful candidates will be expected to have a strong record of research



National Institute of
Diabetes and Digestive
and Kidney Diseases

The NIDDK currently has two open positions for **Program Directors** in the Division of Diabetes, Endocrinology and Metabolic Diseases (DDEMD) at NIDDK. One is for Diabetes Clinical and Translational Research and the other for Diabetes Clinical Research.

Click [Here](#) to read more about the Program Director for Diabetes Clinical & Translational research

accomplishments and funding and an innovative plan for their future research.

Click [Here](#) to see the full job description & posting

Click [Here](#) to read more about the Program Director for Diabetes Clinical Research

OPPORTUNITIES FOR FUNDING

ADA Now Accepting Research Applications for their Fall 2022 Grant Cycle



The American Diabetes Association® (ADA) is excited to launch three new research opportunities for our [Fall 2022 Cycle](#). These requests for applications (RFAs) aim to fund innovative inquiries and usher in the next generation of scientific breakthroughs.

[Supporting the Psychological and Emotional Needs of People with Diabetes](#) – solicits proposals to fund translational research to more effectively deliver personalized, patient-centered psychological and emotional care that considers the context of the person with diabetes, as well as their individual values and preferences. Research areas may include but are not limited to strategies for improving patient communications and interactions, problem identification, psychosocial screening, diagnostic evaluation, intervention, and intervention scalability. For the purposes of this RFA, research proposals focusing on potential physiological and biological underpinnings of psychological conditions are out of scope.

[Tackling the Epidemic of Youth-Onset Type 2 Diabetes](#) - solicits proposals to address key knowledge gaps in youth-onset T2D in order to better understand, prevent, treat, and ultimately induce remission for the rapidly increasing numbers of affected individuals. Applications that focus on disadvantaged lower socioeconomic level families where the burden of disease is greatest are strongly encouraged. Emphasis will be placed on clinical and translational research.

[Improving the Lives of Women with Diabetes across the Lifespan](#) - soliciting proposals for research to better understand clinically important sex and gender differences to optimally inform prevention, diagnosis and treatment strategies for women across the lifespan and the development of sex-specific clinical guidelines where warranted. While this call is broad in scope and encompasses basic through clinical research, significant emphasis will be placed on diabetes clinical research and translation.

Contact Research Programs at grantquestions@diabetes.org with any questions.



Click Here to see all current NIH NIDDK RFAs

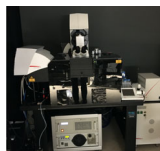


University of Colorado
Anschutz Medical Campus

Click here to see current CU INTERNAL Limited Submission Funding Opportunities

Have you considered using a DRC core service?

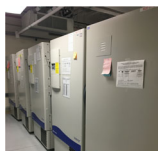
The DRC contains four biomedical cores that provide services and resources to DRC investigators. These cores are designed to facilitate and broaden CU Denver DRC research by expanding access to shared equipment, enhancing availability and training for emerging technologies, and allowing scientists to have greater access to clinical tissue and data.



Cell and Tissue Analysis

Access to state-of-the-art multi-color confocal microscopy, flow cytometry analysis and cell sorting services, and expert assistance for mass cytometry and ion-beam imaging technologies.

Learn More about
Cell & Tissue
Analysis



Clinical Resources

Access to an integrated, campus-wide, research registry enabling informatics-based clinical studies.

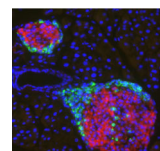
Learn More about
our Clinical
Resources



Disease Modeling

Access and training in stem cell technologies for in vitro human disease modeling of diabetes & molecular core services.

Learn More about
Disease Modeling



Tissue Procurement & Processing

Access to islet isolation and transplantation services along with access to commonly used cell lines and diabetes-related histology techniques.

Learn More about
Tissue Procurement
& Processing

Want us to feature you or a colleague
on an upcoming DRC newsletter?
Have an important research update?



Click Here to Submit a Story to the DRC
Monthly Newsletter

Click Here to Follow us on Twitter

**Please remember to acknowledge support from the University of Colorado
Diabetes Research Center and our associated cores by referencing NIDDK
grant #P30-DK116073 in your presentations and publications.**

Click here to visit the DRC Website

Click Here to Subscribe to this Newsletter

*Please contact Lisbel.Woods@CUAnschutz.edu
with any questions or feedback about this newsletter*

This email was sent to: lisbel.woods@cuanschutz.edu

This email was sent by the University of Colorado

[Manage your email preferences](#) | [Update your contact information](#)

Your CU ID:003f400000mHsmqAAC