

AUGUST 2023

HAPPY SUMMER TO OUR DRC MEMBERS & COMMUNITY!

Thank you all so much for your patience as I was on maternity leave. I am so happy to be back and ready to provide you all with valuable monthly updates of everything happening in the DRC. As always, please reach out to me, Lisbel Woods, if you have any story ideas or kudos/recognition you'd like me to add to a future edition of our newsletter.



DRC WELCOMING NEW MEMBERS APPLY NOW!

Now is a great time to consider applying to become a DRC Member. We welcome members who are broadly engaged in all aspects of diabetes research, including complications associated with diabetes. As a member, you would get a discount for core usage and prioritized services.

Browse our website to learn more:

<https://medschool.cuanschutz.edu/diabetes-research-center>

Here is a list of our current membership criteria

1. Full-time University of Colorado faculty
2. Pursuing research broadly relating to diabetes or metabolism that is funded by the NIH, ADA, JDRF or other diabetes-related funding source
3. Current recipients of DRC Pilot & Feasibility Awards, regardless of funding source
4. New faculty (within 5 years of first faculty appointment) who are developing independent diabetes-related research programs

If you are interested in joining as a member please click [HERE](#) to fill out an application.



2022 PILOT & FEASIBILITY AWARDEE: LESSONS & TRIUMPHS - JEFFERSON KNIGHT, PHD



How did the P&F award help your research?

My lab has been able to pursue an exciting project that we wouldn't have done otherwise. Before the P&F award, my funding was all for basic biochemistry and biophysics research, typically with purified proteins. This award has allowed us to expand our expertise to insulin-secreting cells and to begin working with islets, in order to study oxidative protein damage during inflammatory stress. I feel that this project represents the logical next step for my research program, so that we can apply our knowledge of secretory proteins to studying how they get damaged during disease states. Our results so far under the P&F award have been encouraging and I'm really excited to see where this leads.

Do you believe this award helped develop you professionally? If so, how?

Absolutely! The award has opened up opportunities for us to be mentored by several members from the wonderful community of scholars at the BDC and DRC. I am extremely grateful that we have been able to present our work to this community, develop collaborations, and get critical feedback. The people I have gotten to know through this award have been super helpful, and I have discovered how the diabetes community is very collegial both here and globally.

What advice would you give to yourself in April 2022, when you first received this award?

Good question! I would tell myself to expect surprises and keep an open mind – it turns out there are a lot of proteins that accumulate damage from lipid aldehydes, not just the ones we predicted. I also would have re-budgeted to attend a diabetes conference in Year 1, not just Year 2. Going to the ADA meeting this year was incredibly eye-opening in terms of seeing the scope of research that is being done (and funded) in this field.



BDC WELL REPRESENTED AT AMERICAN DIABETES ASSOCIATION 83RD SCIENTIFIC SESSION



As always we are very proud of everyone who presented at the 2023 ADA. We wanted to especially recognize you all for your efforts and for always representing the BDC.

Below is a list of those who presented at ADA. CONGRATULATIONS & WELL DONE!

Presenter	Type	Title
Friday, June 23		
Cristy Geno	Oral	Implementation of a Hybrid Screening and Monitoring Model in Colorado - Autoimmunity Screening for Kids (ASK)
Brigitte Frohnert	Oral	Monitoring Stage 2 to Stage 3 Transition in Type 1 Diabetes Using Continuous Glucose Monitoring (CGM)
Gabriel Richard	Oral	Insulin Resistance (IR) and Kidney Oxidative Metabolism in People with Type 1 Diabetes (T1D)
Paul Wadwa	Oral	Glycemic control with extended use of automated insulin delivery in children age 2-5 years with type 1 diabetes
Jillian Collins	Oral	Targeted Drug Delivery to Human β -Cells Using Novel Nanocapsule Delivery Vehicle for T1D Treatment
Liz Beck	Oral	Considerations When Switching between AID Devices
Greg Forlenza	Debate	DIY is Not Necessary in Type 1 Diabetes Management
Randi Johnson	Oral	137-OR Metabolite Ratios and Development of Type 1 Diabetes
Saturday, June 24		
Viral N Shah	Symposium	CGM in Type 2 diabetes
Halis Kaan Akturk	Symposium	Type 1 DM Pathology Revealed through Checkpoint Inhibition in Cancer
Cari Berget & Gregory Forlenza	Learning Byte	Omnipod 5 Case Presentations in Pediatrics
Luke Geiser	Poster	Preliminary Accuracy Analysis of a Noninvasive Optical Glucose Sensing Prototype
Elizabeth Vargas	Poster	Diagnosis and Treatment of Diabetes Mellitus in Pediatric Patients with Pancreatitis Followed in a Multidisciplinary Clinic
Xiaofan Jia	Poster	Autoantibodies against PTM-IA2 Extracellular Domain Are Only Associated with Late Progression of Type 1 Diabetes
Taylor Triolo/Andrea Steck	Poster	Genetic Influences on Beta-Cell Function before Type 1 Diabetes Diagnosis
Holly O'Donnell	Poster	Objective Self-Management Behaviors in Adolescents with Disordered Eating
Celia Kohler MS2/Christine Chan	Poster	Trends in Incidence and Prevalence of CFRD from the US CFF Patient Registry
Kimber Simmons	Poster	Guidance to Persons Who Screen Positive for Islet Autoantibodies and Their Health Care Providers—Ask the Experts
Meghan Pauley	Poster	Prevalence of Islet Autoantibodies in Adults from the General Population
Kathleen Waugh	Poster	Risk for Progression to clinical Type 1 Diabetes in Older Adolescents Positive for Islet Autoimmunity
Sarit Polsky/Elizabeth Buschur	Oral	Pregnancy Intervention with a Closed-Loop System (PICLS) Study
Vira Kravets	Oral	To Which Degree Do Alpha Cells Shape the Role of the Beta Cells First Responders?
Viral N Shah	Oral	Time in range is associated with incidental diabetic retinopathy in adults with T1D: A 7-year longitudinal study
Kimber Simmons	Corporate Symposium	A 360-Degree Examination of Type 1 Diabetes: From Patient Identification to Treatment and Prevention
Sunday, June 25		
Sarit Polsky	Symposium	Evidence and Practical Tools for Using Commercially-Available Systems in Pregnancy
Cristy Geno	Symposium	Screening and Monitoring Perspectives from the United States
Kimber Simmons	Poster	A Novel Program to Help Teens Manage Type 1 Diabetes during Physical Activity—Diabetes Training Camp Teen Boot Camp
Paige Trojanowski	Poster	Assessment of Eating Disorder Risk in Adolescents and Young Adults Starting an On-Body Automated Insulin Delivery (AID) System

Mark Ciccaglione	Oral	Submicron Ultrasound Contrast Agents as Therapeutic Delivery Vehicles in Type 1 Diabetes
Cari Berget	Symposium	Demystifying Device Data
Marc Breton/Wadwa, Forlenza	Oral	AID-Driven TIR Improvements in Young MDI Children with T1D Are Indistinguishable from Their Pump-Using Peers—A PEDAP Subanalysis
Viji Nair	Oral	ADA Presidents' Select Abstract: Structural Lesions on Kidney Biopsy in Youth-Onset Type 1 Diabetes (T1D) and Type 2 Diabetes (T2D)
Laura Pyle	Oral	Metabolomic analyses identify novel predictors of diabetic kidney disease in youth-onset type 2 diabetes
Abhijit Naik	Oral	Effect of Vertical Sleeve Gastrectomy (VSG) on the Kidney Transcriptome of Youth with Type 2 Diabetes (T2D)

DIABETES RESEARCH CENTER EVENTS

RESEARCH IN PROGRESS SEMINAR SERIES

FALL 2023

*Mondays at 12:00pm
BDC Main Conference Room 2104*

Monday, September 11, 2023	OPEN SLOT
Monday, September 18, 2023	Mia Smith, PhD
Monday, September 25, 2023	External Guest : Victoria Vieira-Potter, PhD <i>University of Missouri</i>
Monday, October 2, 2023	Liudmila Kulik, PhD
Monday, October 9, 2023	Cristy Geno, PhD
Monday, October 16, 2023	Rachel Friedman, PhD
Monday, October 23, 2023	Kathleen Woulfe, PhD
Monday, October 30, 2023	Sarit Polsky, PhD
Monday, November 6, 2023	Neda Rasouli, PhD
Monday, November 13, 2023	Anne Gresch
Monday, November 20, 2023	Thanksgiving Break
Monday, November 27, 2023	City of Hope Diabetes Research Symposium
Monday, December 4, 2023	Elliott Brooks
Monday, December 11, 2023	Maria Hansen
Monday, December 18, 2023	Holiday Break
Monday, December 25, 2023	Holiday Break

Questions? Contact Lisbel Woods at Lisbel.Woods@CUAnschutz.edu

2023-2024 BDC & DRC DIABETES SPEAKER SERIES

Seminars will take place in person on Fridays at 12pm MT
All seminars will have a link provided for registration.

Questions? Contact:
Christy Vasey, christy.vasey@cuanschutz.edu , 303-724-9787

Friday, September 8, 2023	Joana Almaca, PhD Assistant Professor	<i>Endocrinology Diabetes and Metabolism Miller School of Medicine, University of Miami</i>
Friday, September 15, 2023	Sakeneh Zraika, PhD Research Associate Professor	<i>Division of Metabolism, Endocrinology & Nutrition VA Puget Sound Health Care System</i>
Friday, September 22, 2023	Andrew Patterson, MD Professor	<i>Senior Scientist, Genetics and Genome Biology, The Hospital for Sick Children, Toronto, ON</i>
Friday, September 29, 2023 Gossard Forum	Rafael Arrojo e Drigo, PhD Assistant Professor	<i>Molecular Physiology and Biophysics Vanderbilt University</i>
Friday, October 20, 2023	Paige Geiger, PhD Professor	<i>Molecular and Integrative Physiology University of Kansas Medical Center</i>
Friday, November 3, 2023	Jill Kanaley, PhD Professor	<i>Nutrition and Exercise Physiology University of Missouri</i>
Friday, November 10, 2023	Childhood Diabetes Prevention Day	<i>Symposium AMC- TBD</i>

Friday, November 17, 2023 *joint visit with CHCO*	Aaron Kelly, PhD Professor	<i>Division of Pediatric Epidemiology and Clinical Research Co-Director, Center for Pediatric Obesity Medicine University of Minnesota Medical School</i>
Friday, December 1, 2023	Julie Sneddon, PhD Assistant Professor	<i>UCSF School of Medicine Diabetes Center</i>
Friday, January 19, 2024	Maria J. Redondo, MD, PhD, MPH Professor	<i>Pediatric Diabetes & Endocrinology, Baylor College of Medicine</i>
Friday, February 2, 2024	Emily K. Sims, MD Associate Professor	<i>Pediatric Endocrinology and Diabetology Indiana University School of Medicine Center for Diabetes and Metabolic Diseases</i>
Friday, February 16, 2024 *joint visit with Immunology*	Donna L. Farber, PhD Professor	<i>Director, Human Tissue Immunity and Disease Initiative Chief, Division of Surgical Sciences Columbia University</i>
Friday, March 1, 2024	Lukas K. Tamm, PhD Professor	<i>Chair, Department of Molecular Physiology and Biological Physics Director, Center for Membrane and Cell Physiology University of Virginia School of Medicine</i>
Friday, March 15, 2024 Gossard Forum	Florence Brown, MD Assistant Professor	<i>Co-Director Joslin and BIDMC Diabetes in Pregnancy Program Harvard Medical School</i>
Friday, March 29, 2024	BDC Diabetes Day Symposium Keynote Speaker: Jane Buckner, MD	<i>Director, Translational Research Program President- Benaroya Research Institute at Virginia Mason</i>
Friday, April 12, 2024	Lu Cai, MD, PhD Professor	<i>Director, Pediatric Research Institute University of Louisville School of Medicine</i>
Friday, April 26, 2024	Roland Tisch, PhD Professor	<i>Microbiology and Immunology University of North Carolina, Chapel Hill</i>
Friday, May 10, 2024	Senta Georgia, PhD Assistant Professor	<i>Endocrinology, Diabetes and Metabolism Keck School of Medicine, University of Southern California</i>

OPPORTUNITIES FOR FUNDING



[Click Here to see all current JDRF RFAs](#)



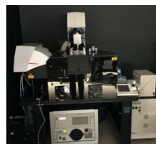
[Click Here to see all current NIH NIDDK RFAs](#)



[Click here to see current CU INTERNAL Limited Submission Funding Opportunities](#)

Have you considered using a DRC core service?

The DRC contains four biomedical cores that provide services and resources to DRC investigators. These cores are designed to facilitate and broaden CU Denver DRC research by expanding access to shared equipment, enhancing availability and training for emerging technologies, and allowing scientists to have greater access to clinical tissue and data.



Cell and Tissue Analysis

Access to state-of-the-art multi-color confocal microscopy, flow cytometry analysis and cell sorting services, and expert assistance for mass cytometry and ion-beam imaging technologies.



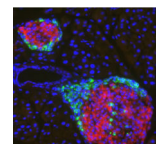
Clinical Resources

Access to an integrated, campus-wide, research registry enabling informatics-based clinical studies.



Disease Modeling

Access and training in stem cell technologies for in vitro human disease modeling of diabetes & molecular core services.



Tissue Procurement & Processing

Access to islet isolation and transplantation services along with access to commonly used cell lines and diabetes-related histology techniques.

Learn More about Cell & Tissue Analysis

Learn More about our Clinical Resources

Learn More about Disease Modeling

Learn More about Tissue Procurement & Processing

Want us to feature you or a colleague on an upcoming DRC newsletter? Have an important research update?



Click Here to Submit a Story to the DRC Monthly Newsletter

Click Here to Follow us on Twitter

Please remember to acknowledge support from the University of Colorado Diabetes Research Center and our associated cores by referencing NIDDK grant #P30-DK116073 in your presentations and publications.

Click here to visit the DRC Website

Click Here to Subscribe to this Newsletter

Contact Lisbel.Woods@CUAnschutz.edu with any questions or feedback about this newsletter

This email was sent to: lisbel.woods@cuanschutz.edu
This email was sent by the University of Colorado
1775 Aurora Ct Aurora, CO, 80045, United States
[Manage your email preferences](#) | [Update your contact information](#)
Your CU ID:003f400000mHsmqAAC