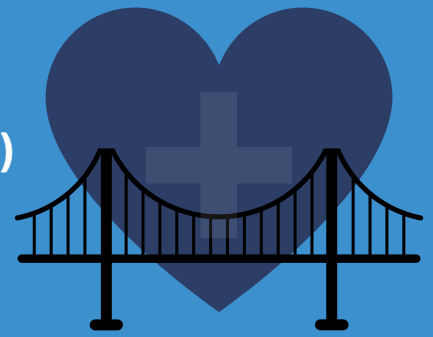


Bridges Not Band-Aids

Building a Collaborative Community Response (CCR)

Too many Coloradans are falling through the gaps between our current systems of care.



COLLABORATIVE COMMUNITY RESPONSE (CCR)

America's systems of care to support underrepresented people, families, and communities are broken. The COVID-19 pandemic has underscored the vast disparities of illness and death based on race, income, and living environment. We have a once-in-a-lifetime opportunity to transform our broken systems.

The Collaborative Community Response (CCR) will bridge the gap between fragmented sectors and programs to provide integrated services to underrepresented communities. CCR encourages inclusive collaboration at the community level so that individuals and families can progress from fractured health to thriving lives.

OUR SOLUTION

CCR is a person, family, and community-centered approach that integrates public health, social, behavioral, and primary care services. A collaborative community approach prevents and eliminates disparities through easy-to-access whole-person care to improve well-being and encourage community thriving. Local leaders can shape their community's collaboration to meet local needs, supported by a sustainable common infrastructure that enables integrated delivery of all programs for marginalized people.

WE CAN NO LONGER SETTLE FOR INCREMENTAL REFORMS WITH LIMITED IMPACT.

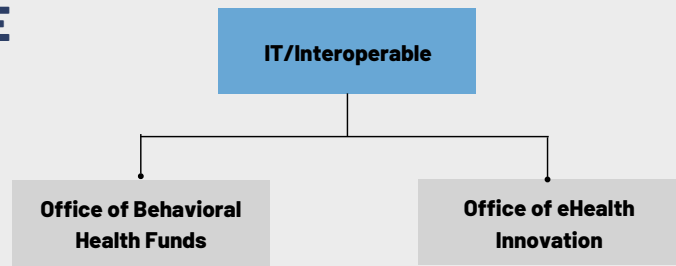
THE NUTS AND BOLTS

- Invest in a sustainable, common, human and technical infrastructure that will reduce fragmentation and encourage local collaborative structures.
 - Create a "Commons" system that empowers communities and local leaders, especially those from underrepresented groups, to develop their own collaborative and build partnerships with public health departments, human service agencies, primary care, mental health, and community-based organizations.
 - Full-time "Commons Companions" will create and implement personalized individual and family plans that provide whole-person, wraparound clinical and social services.
 - Develop an interoperable IT system that enables cross-sector collaboration, data sharing, and metric tracking to support the full continuum of care for individuals and families.

1.

IT INFRASTRUCTURE

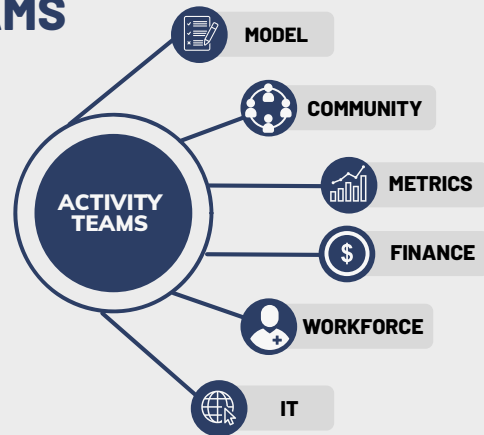
Develop a statewide information technology system to facilitate interoperability among existing IT systems to support collaboration and coordinated care.



2.

STATEWIDE ACTIVITY TEAMS

Establish six statewide Activity Teams that consist of members appointed by the governor to support the local collaborations (Commons). Activity Teams will provide detailed models of complex, integrated system design and ongoing support services for local community collaboration. Each team's responsibilities are outlined on the following page.



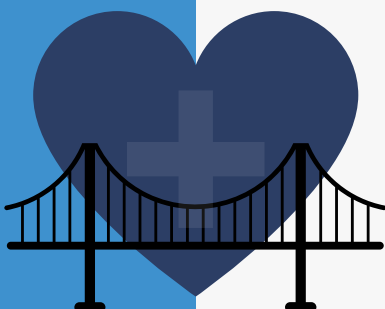
3.

THRIVING COMMUNITIES

Provide Community Grants that support the planning and implementation of a "Commons." This collaborative initiative focuses on the whole person, whole family-integrated support model that is appropriate for that community. Grants will pay for the costs of collaboration, local Commons Companions to navigate the system for participants, and social health services.



- Use one-time federal funds to build and refine this shared statewide human and technical infrastructure. We have the opportunity to **revolutionize the state's health and social systems** rather than make incremental changes. CCR would provide Colorado the opportunity to re-invest in a transformative way that leads to greater savings in the future.
- A shared, common infrastructure will empower communities to take charge of their own wellness and thriving. It's time we progress from the band-aids of incremental reform; **we have the power to build bridges across fragmented health services.** Together, we can encourage community collaborations and improved healthcare outcomes across Colorado.



ACTIVITY TEAMS



Model

Develop a model system of collaboration that can be adapted to specific communities and their needs. The model will inform how to best serve people and families through evidence-based best practices, including COVID-19 response.



Community

Recruit community leaders and develop a governance model by gathering and sharing lessons from around the state and country to make detailed suggestions for Commons collaborations, community engagement, and ground-level efforts.



Metrics & Measurement

Define the metrics of “thriving” based on social determinants and appropriately adjust the metrics to a community’s needs. The Activity Team will develop a continuous improvement measurement and evaluation system, build and operate an adaptive systems model, and conduct ongoing policy analysis.



Finance

Create a model for financial sustainability. This may involve reinvestment of downstream savings, reprogramming siloed funds, or other solutions. The Activity Team will identify how to capture some of the downstream savings and benefits we now spend on sickness and social failure to reinvest in the collaborative program.



Workforce

Workforce team members will create a cohesive model for recruiting community members to participate in CCR to encourage workforce development and career placement. The Activity Team will aid in training individuals from within the communities to be served.



Information Technology

Collaborative community efforts will benefit substantially from the creation of an integrated and interoperable statewide IT infrastructure that shares information among providers, participating organizations, and Commons System members, while providing continuous feedback for improvement.