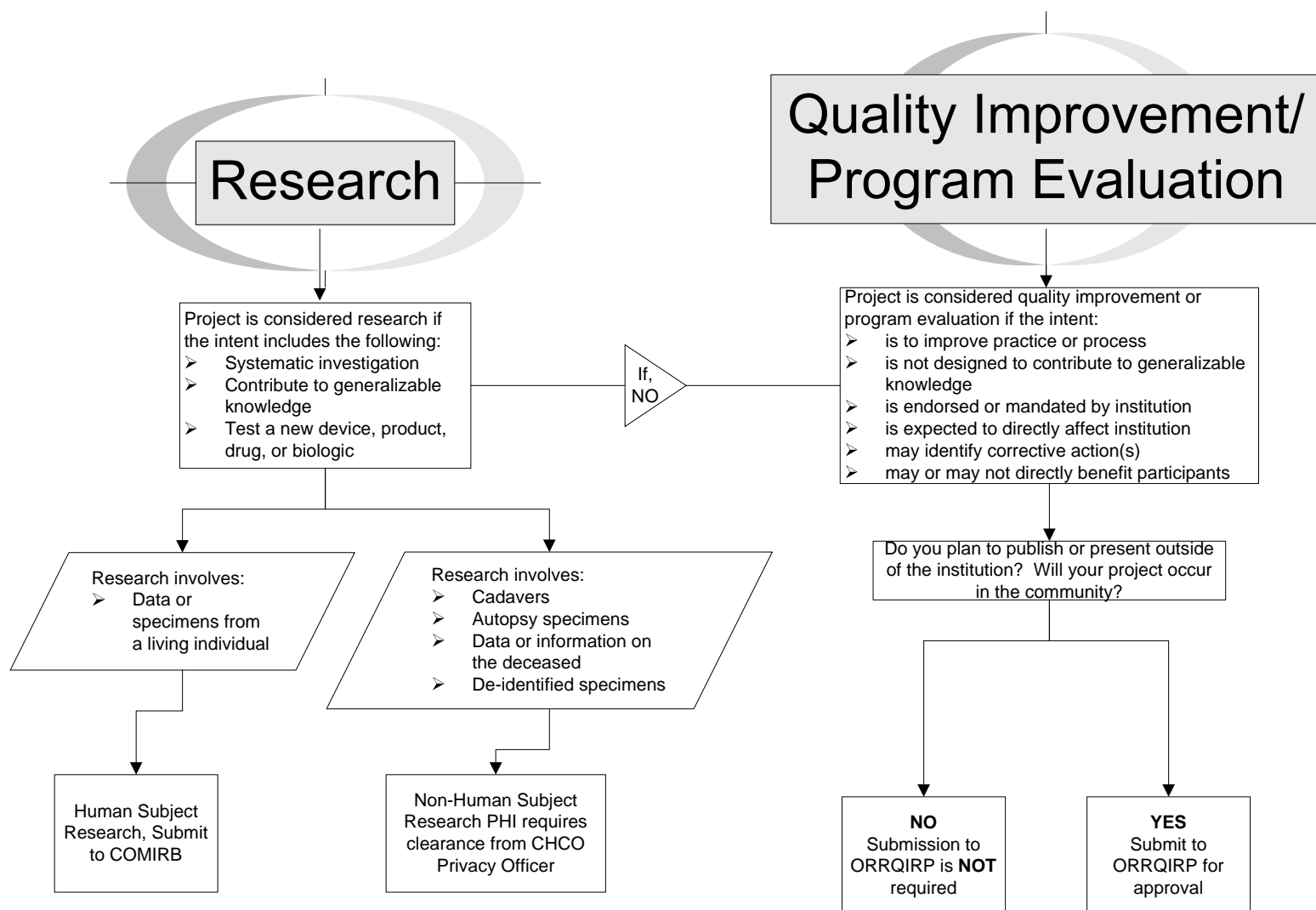


Where do I submit my project for review?



Definitions

Generalizable knowledge may include:

- Benefits that extend beyond immediate population, to society, other researchers, scholars, or practitioners in field
- Drawing conclusions, testing, or generating a hypothesis
- Publication or presentation to inform the field of study
- Contributes to a theoretical framework or body of knowledge

Systematic investigation means the study is carried out using step-by-step procedures organized according to a set of interrelated ideas or principles.

