

Neurodevelopment in Families with Dementia

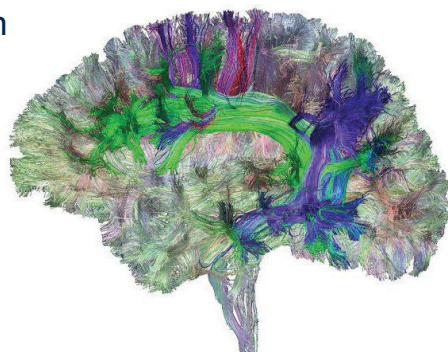


A study at the UCSF Dyslexia Center

Your child's participation will help us understand how the brain develops in families with a history of dementia

Participation would be 9 to 11 hours total spread over two days and includes:

- Medical evaluation
- Language, thinking and academic testing
- Questionnaires
- Emotions testing
- Saliva sample collection
- Brain scan



We're looking for families with a history of dementia with children who...

- are 7 to 17 (young adults up to 25 may be eligible)
- are willing to come to UCSF in San Francisco for a 2–3-day visit
- travel, hotel and meal expenses are covered
- monetary compensation provided for your time

To learn more, please contact the principal investigator, Dr. Suzee Lee, at FamilyNDStudy@ucsf.edu or 415.502.8953.